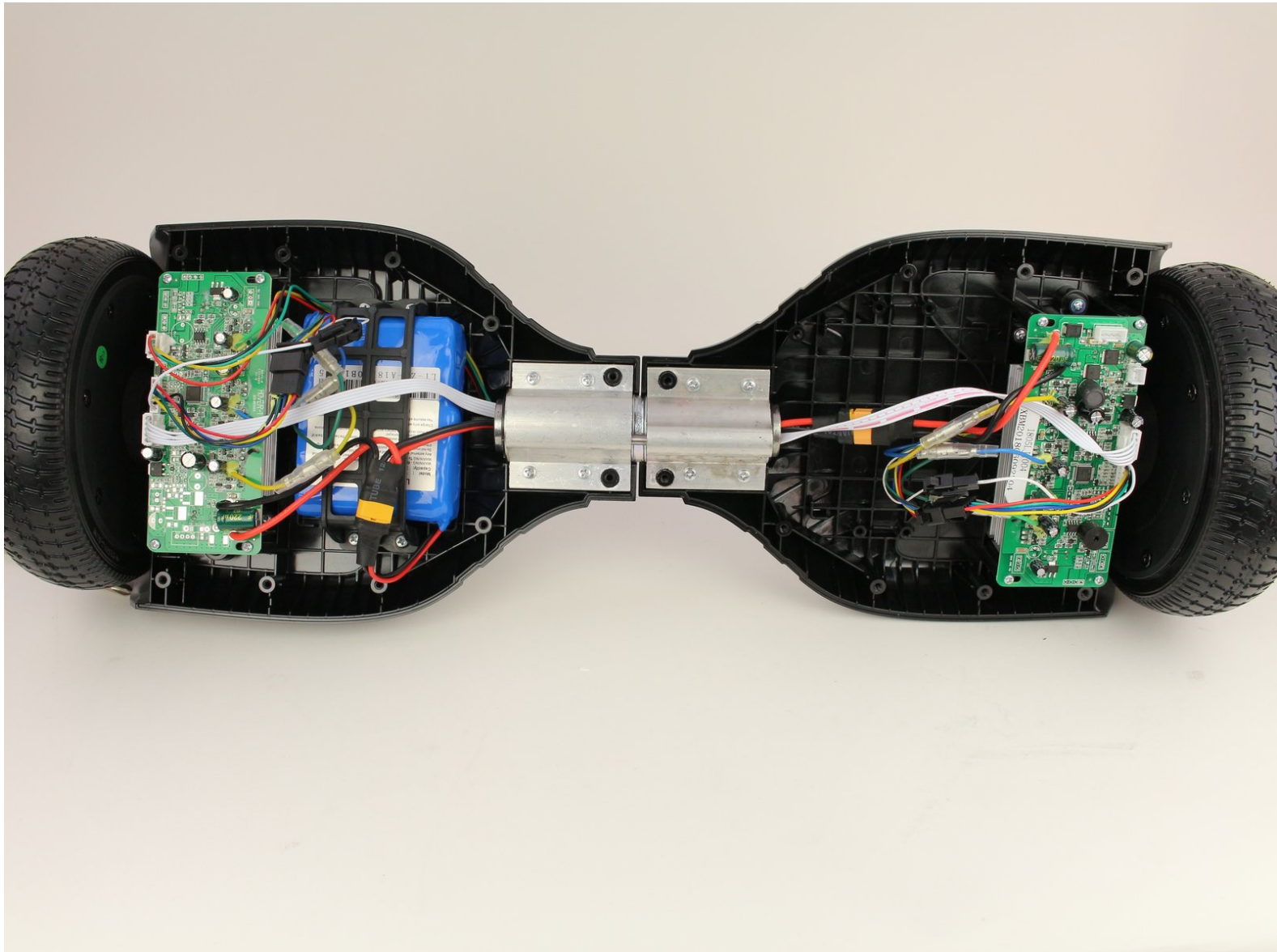




Hover-1 Liberty Gyroscope Sensor Boards Replacement

Replace the gyroscope sensor boards which acts as a gyroscope for the device.

Written By: Eduardo Miranda



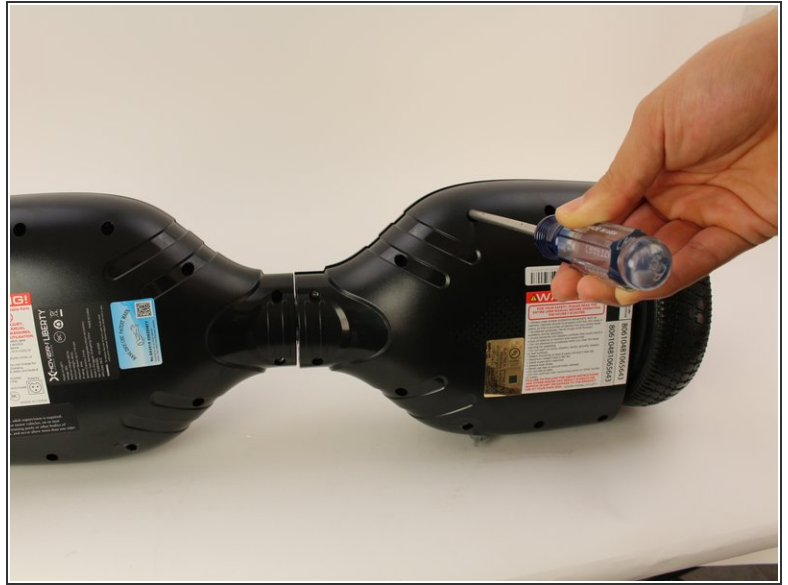
INTRODUCTION

If your hoverboard is experiencing issues where it will not move forward or unable to maintain balance, there is a problem with the gyroscope controlling the wheels.

TOOLS:

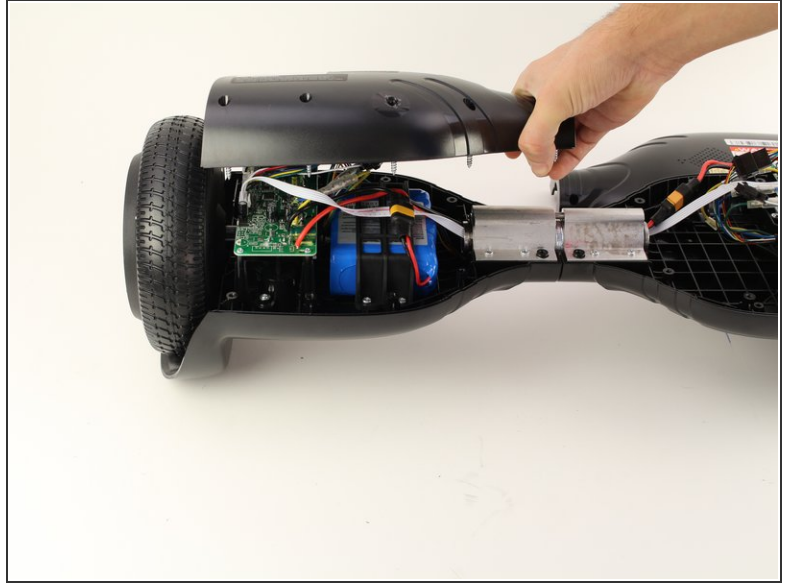
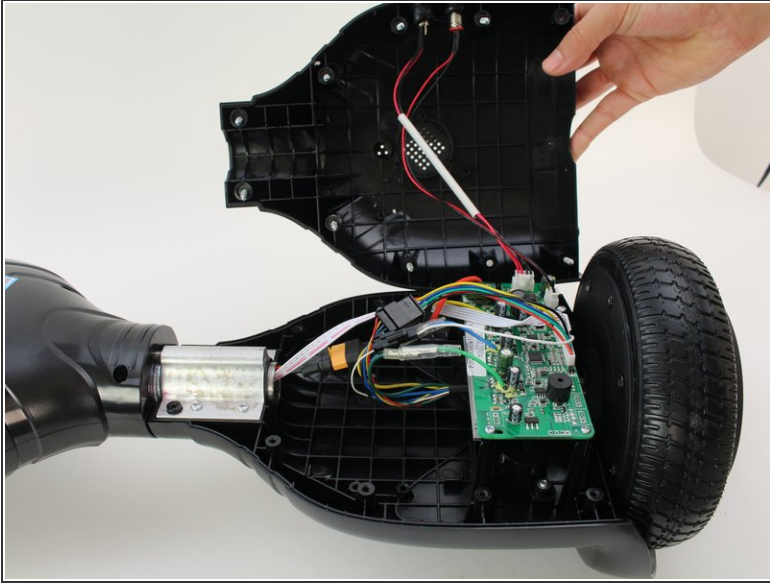
- [Phillips #2 Screwdriver](#) (1)
 - [Phillips #1 Screwdriver](#) (1)
-

Step 1 — Bottom Cover



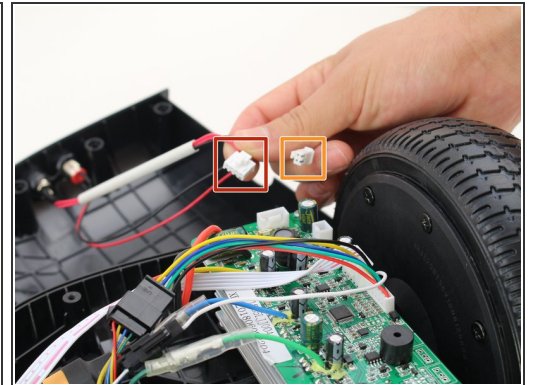
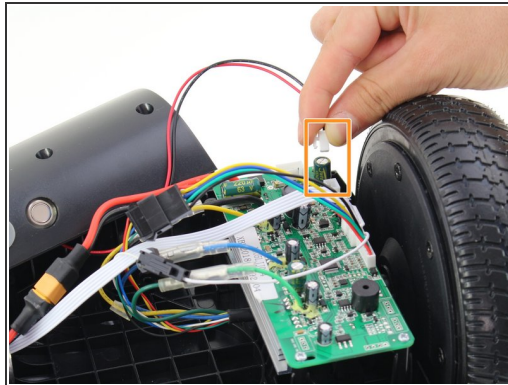
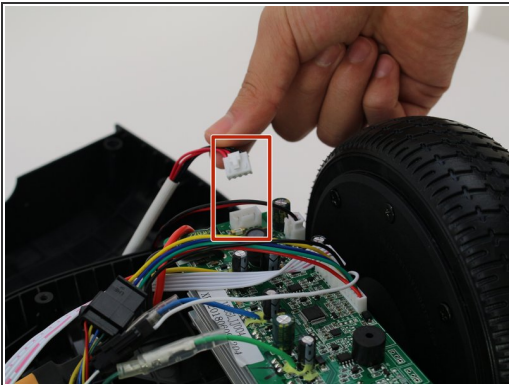
- Flip the hoverboard over so the labels are facing upwards.
- Remove the twenty 18mm screws using a Phillips #2 screwdriver and twisting counterclockwise.

Step 2



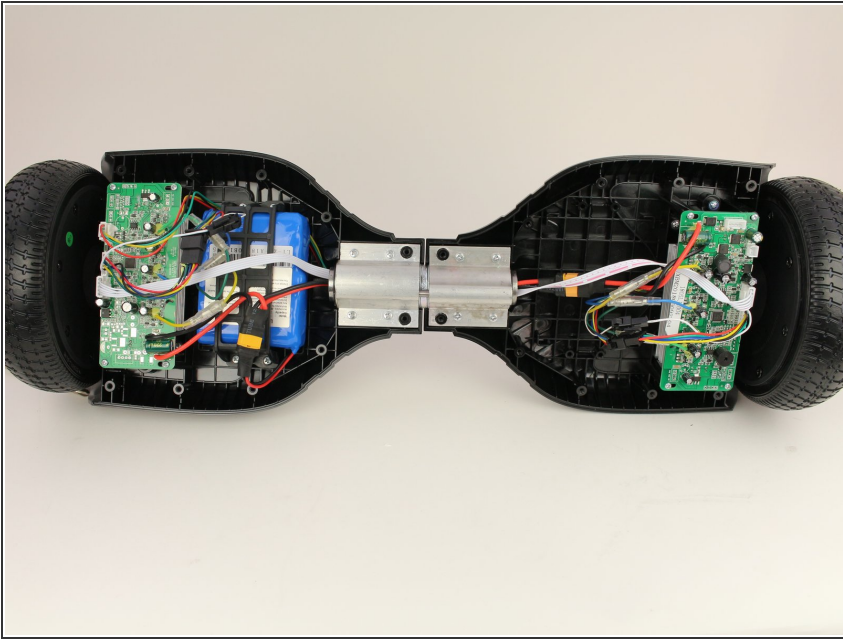
- Remove the bottom cover by lifting it away from the hoverboard.
- i** The cover on the side without the battery has two wires connecting the power button and charging port.

Step 3



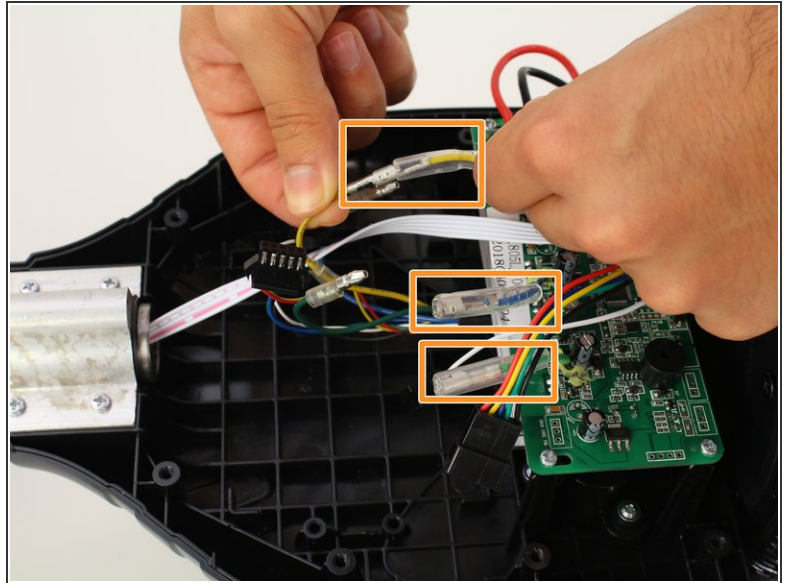
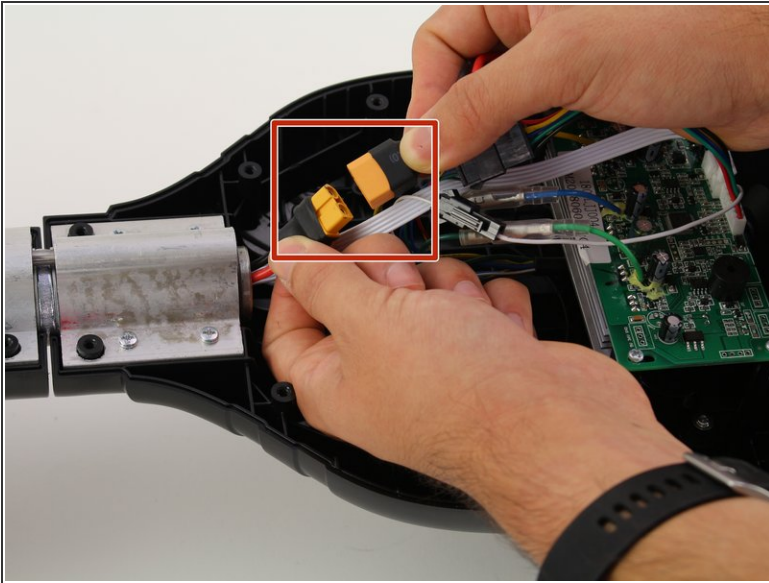
- Remove one connector from the non-battery side circuit board.
- Remove the next connector from the non-battery side circuit board.
- i** To remove the connectors, pinch the plug and pull away from the circuit board.

Step 4 — Gyroscope Sensor Boards



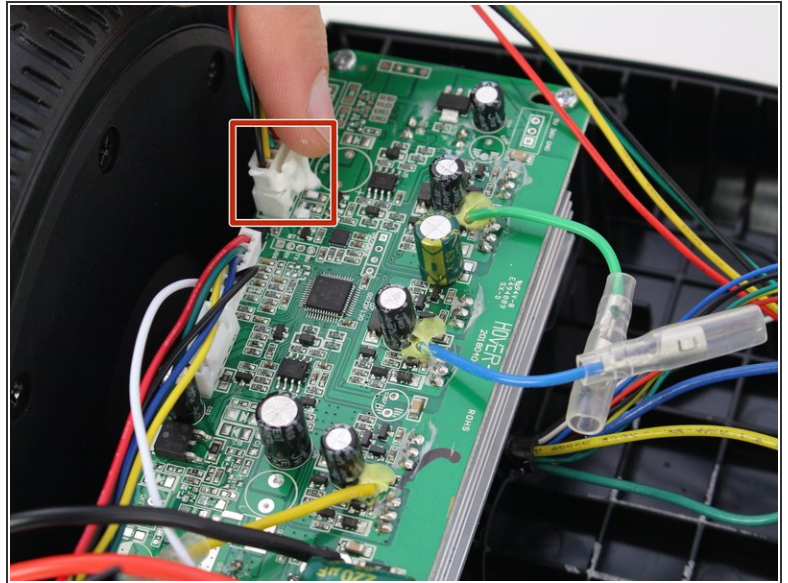
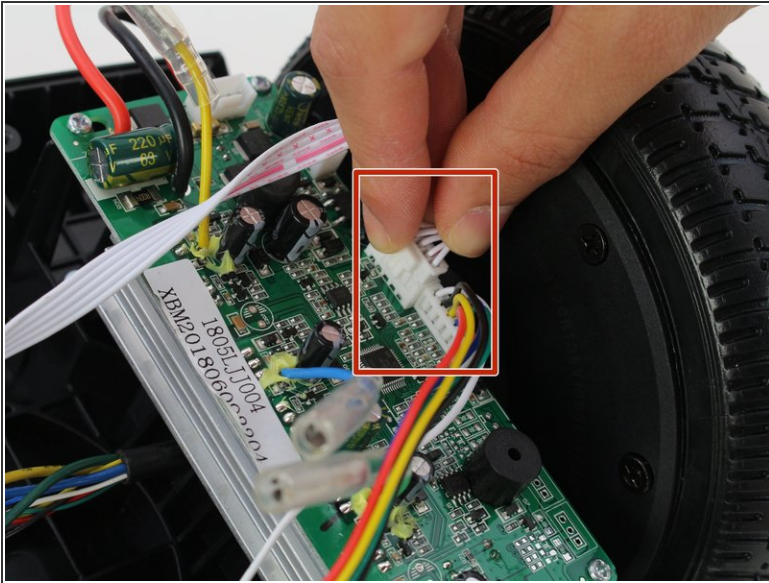
- Place the hoverboard so the sensor boards face you.

Step 5



- Remove battery connector by pulling it apart.
 - Slide the rubber sheaths away from the connector on the blue, green, and yellow wires.
 - Disconnect the colored wires by pulling them apart.
- ✦ The large colored wires connecting the sensor boards to the wheels need to match for the motor to operate correctly.

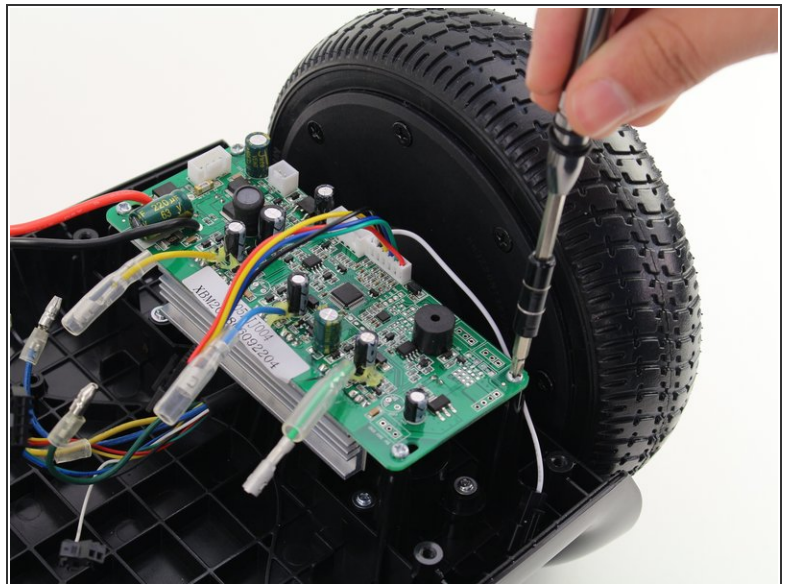
Step 6



- Remove the white cable from the sensor boards by disconnecting the cable on each side of the hoverboard.

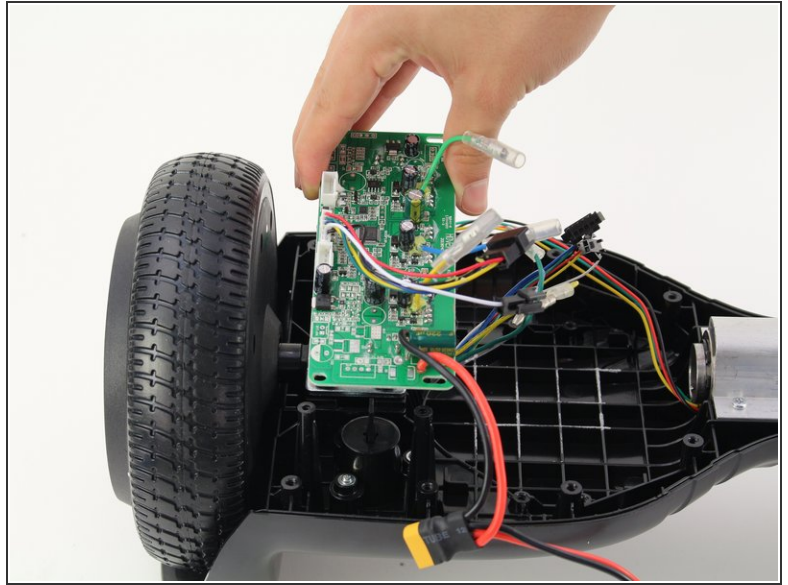
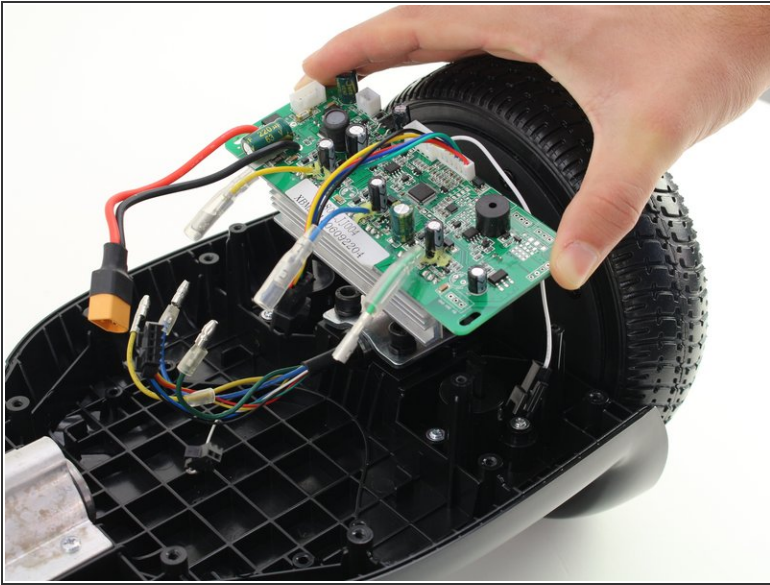
i To release the cable connector, squeeze the sides while pulling it away from the sensor board.

Step 7



- Remove the four 10mm screws with a Phillips #1 screwdriver.

Step 8



- Remove the sensor board by lifting it away from the hoverboard.
- ⓘ Repeat steps 4-8 to remove the sensor board from the other side.

To reassemble your device, follow these instructions in reverse order.