



Samsung Galaxy Tab E 8.0 Front Camera Replacement

The front camera of the Samsung Galaxy Tab E...

Written By: Christian Bloemhof



INTRODUCTION

The front camera of the Samsung Galaxy Tab E 8.0 can be damaged if the camera is struck by a hard object. This guide shows how to replace the tablet's front camera which is attached to the motherboard.

TOOLS:

[Tweezers](#) (1)

[iFixit Opening Tool](#) (1)

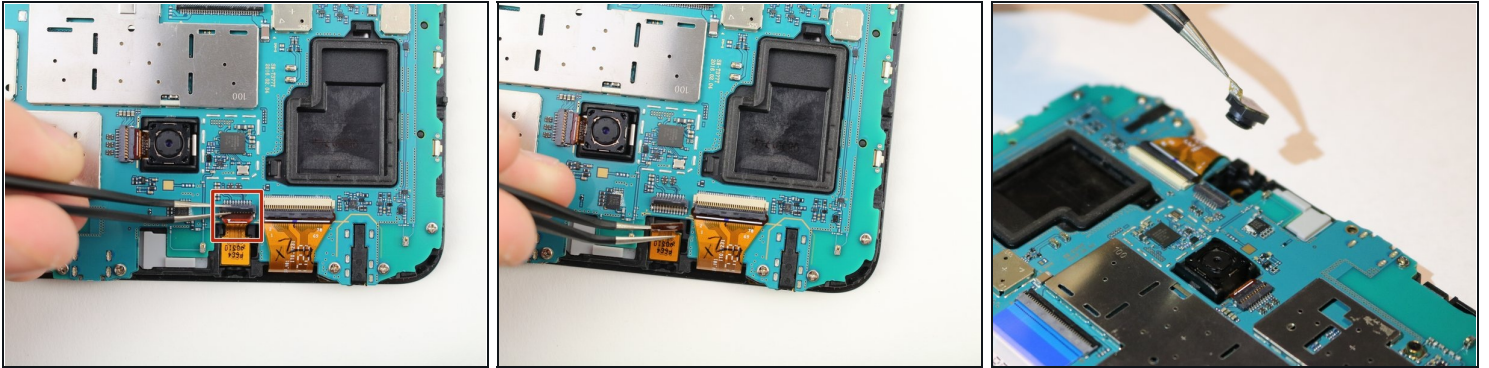
Step 1 — Back Panel



- Use the iFixit Opening Tool to pry off the back case, moving the tool around the screen.

 Make sure the device is off and the SD card is removed before taking off the back casing.

Step 2 — Front Camera



- Use the [tweezers](#) to lift the switch connecting the front camera to the motherboard.
- Remove the front camera from the motherboard by lifting with the tweezers.

To reassemble your device, follow these instructions in reverse order.