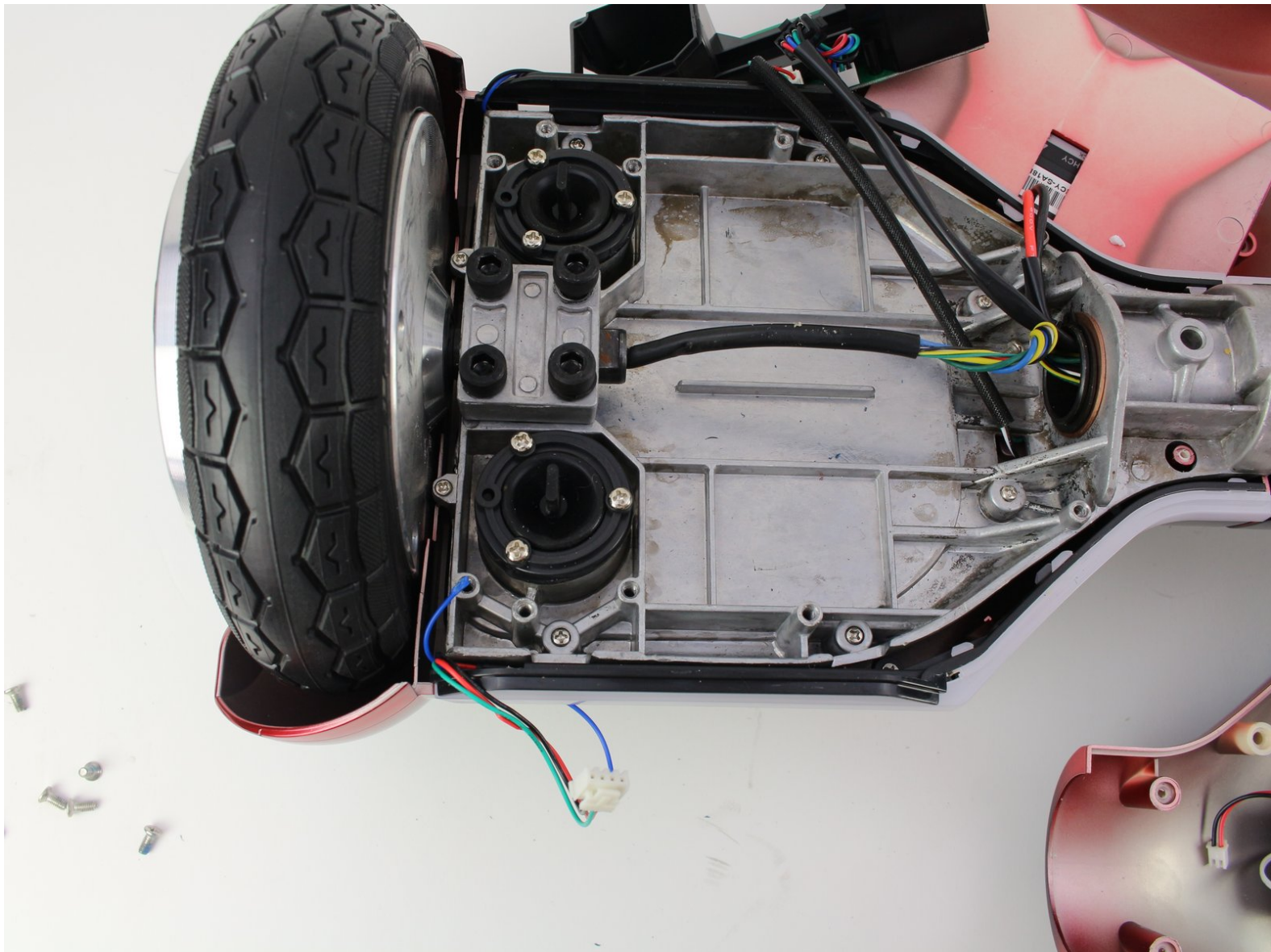




Hover-1 Horizon Left Balancing Sensor Replacement

Replace the left balancing sensors on the Hover-1 Horizon.

Written By: Jesus



INTRODUCTION

Is your hoverboard unbalanced or leaning to one side while riding? This is a guide to show you how to remove the left balance sensor tab on the Hover-1 Horizon, the most likely culprit to your problem. This guide requires a Phillips #2 and a Phillips #1 screwdriver.



TOOLS:

- [Phillips #1 Screwdriver](#) (1)
 - [Phillips #2 Screwdriver](#) (1)
-

Step 1 — Base Plate



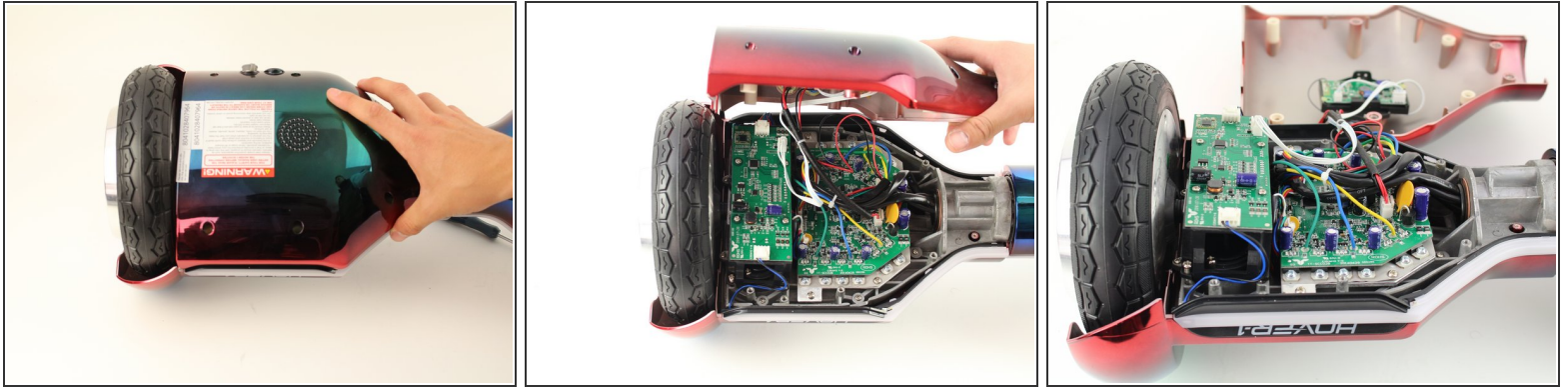
- Remove the six 12mm Phillips #2 screws holding the base plate.

Step 2



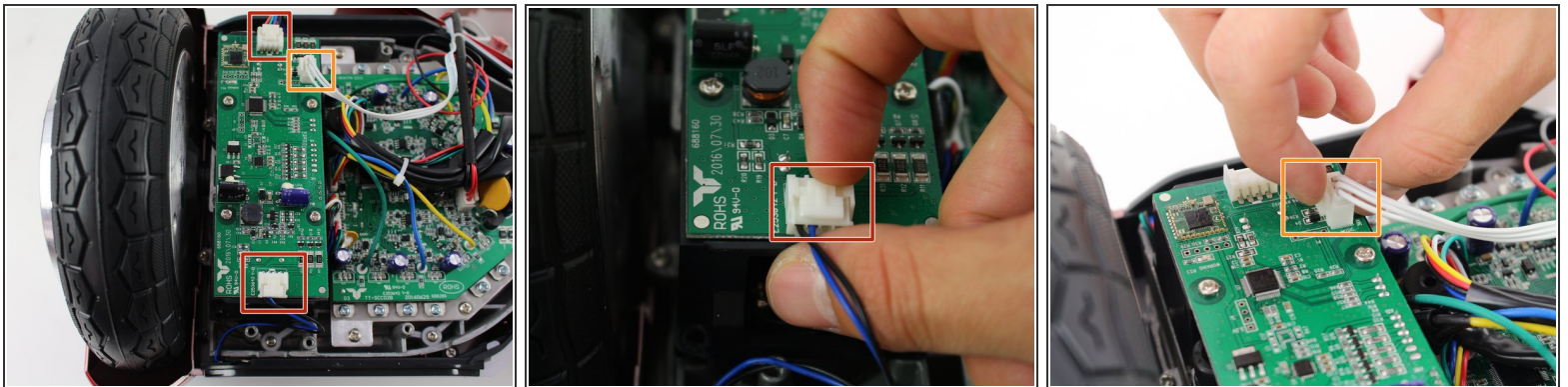
- Remove the two 11mm Phillips #1 screws that hold the base plate to the body.

Step 3



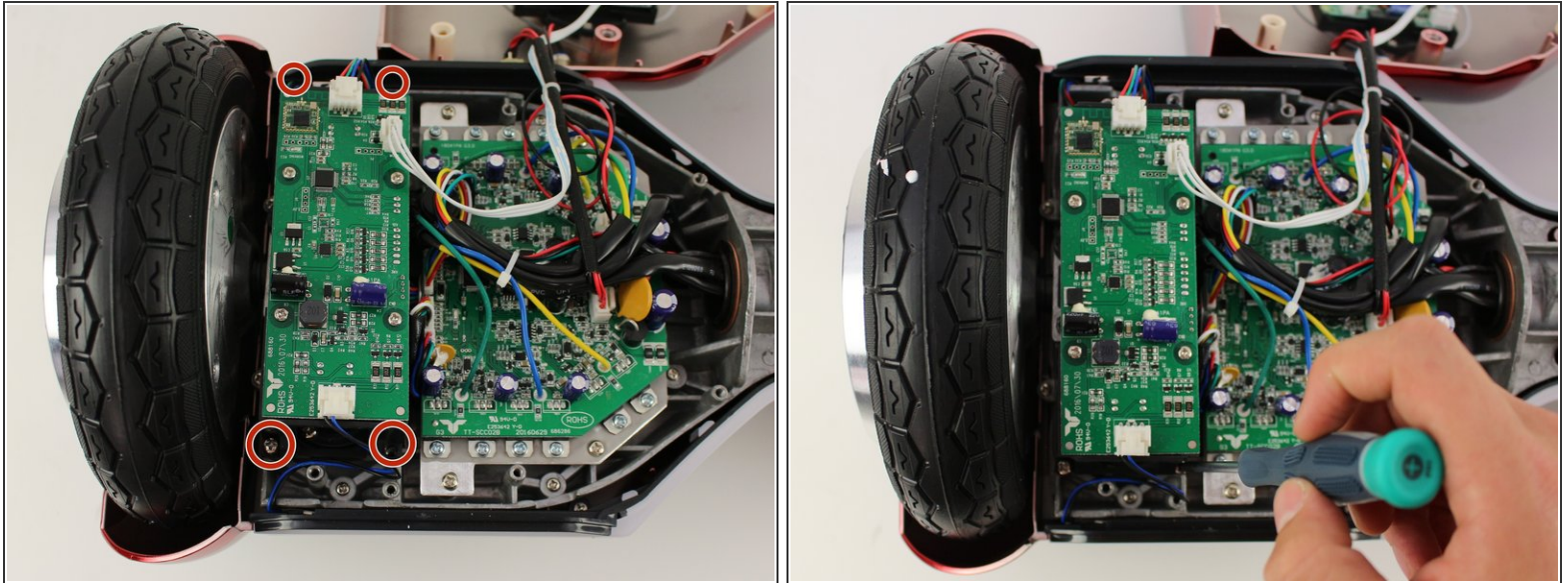
- Remove the base plate by lifting it up.
- ⓘ The base plate is connected to the body with wires. The wires are long enough to set the base plate to the side.

Step 4 — Left Gyroscope Sensor Board



- Remove the two connectors on either side of the board by lifting the tab and pulling out.
- Remove the connector in the middle of the board by squeezing the tab and pulling up.

Step 5



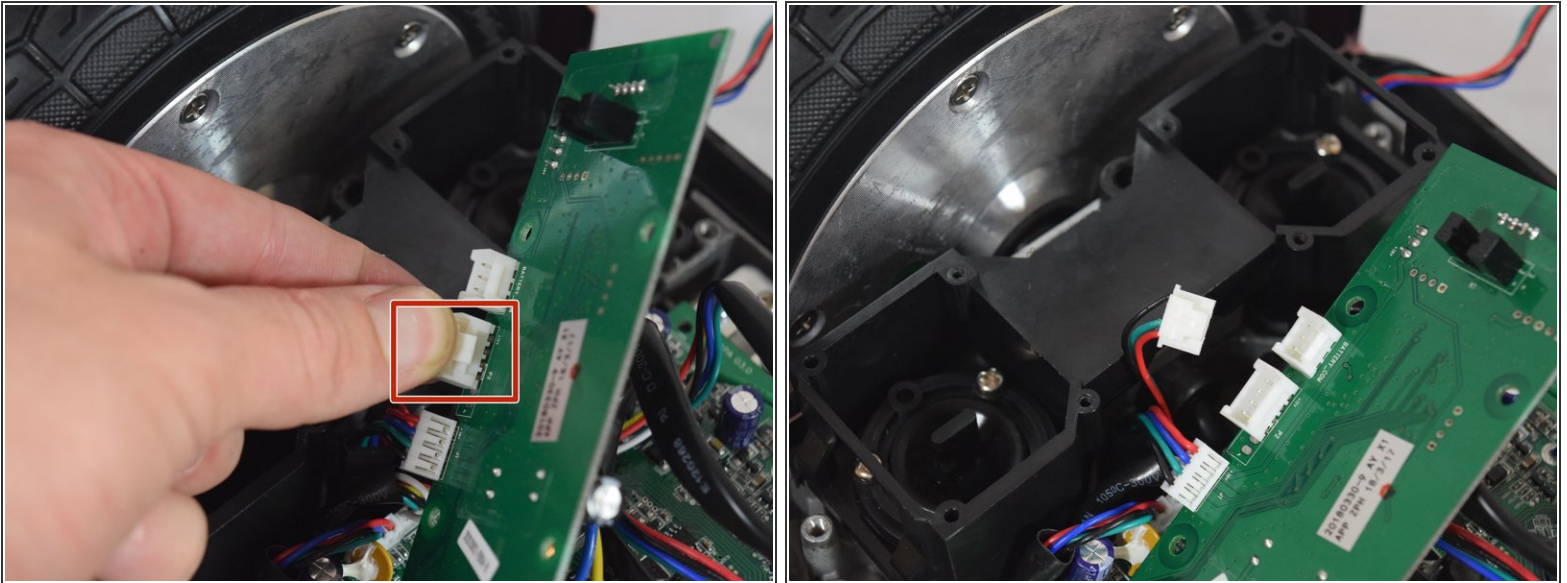
- Remove the four 11mm Phillips #1 screws that hold the cover on.

Step 6



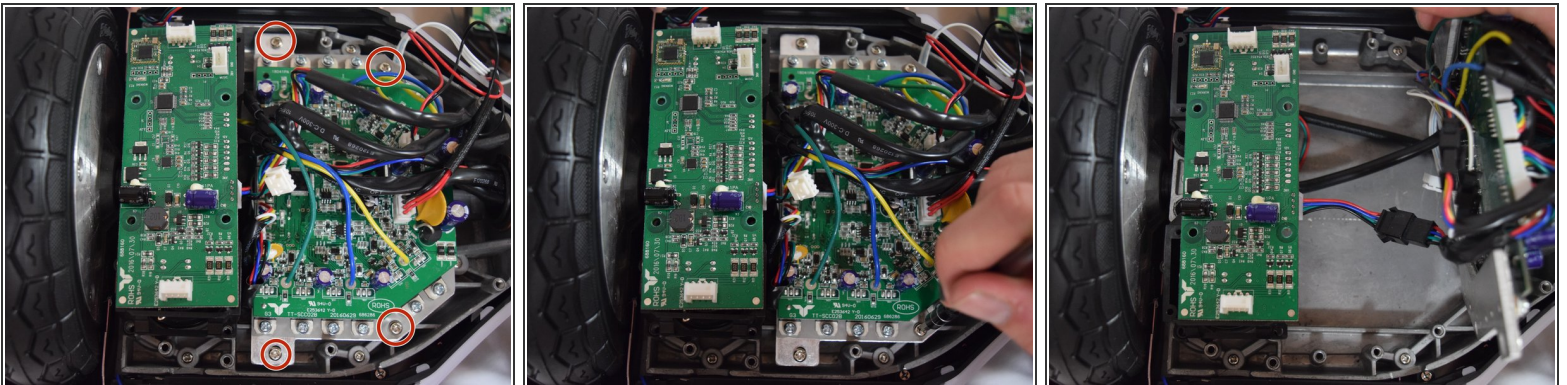
- Remove the four 11mm Phillips #1 screws that attach the gyroscope board to the mount.
- Lift the board to reveal the connections on the bottom.

Step 7



- Remove the middle connector by squeezing the top of the tab and pulling up.

Step 8



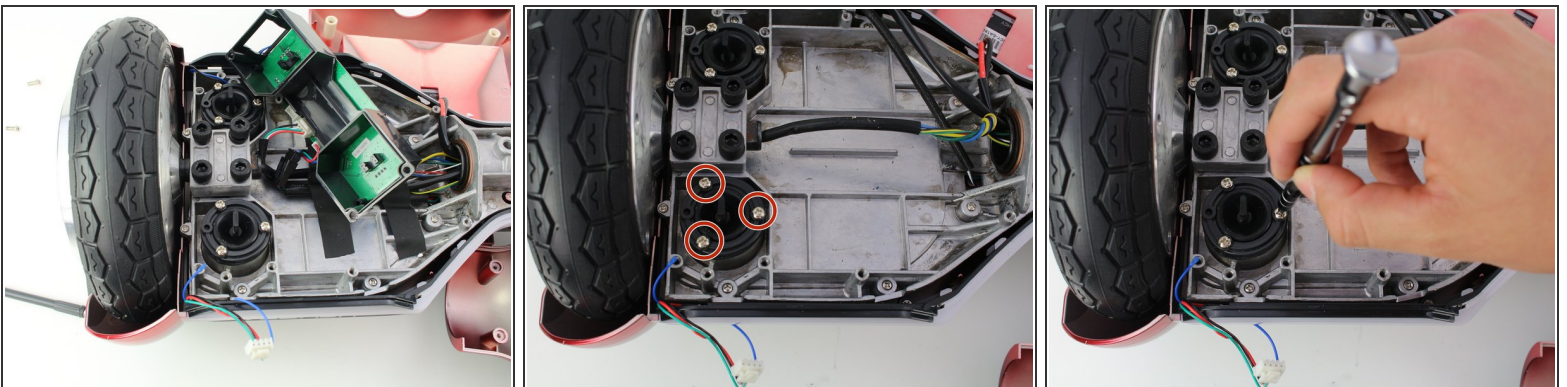
- Remove the four 12mm Phillips #2 screws that hold the motherboard to the base.
- Pull the motherboard away from the gyroscope by grabbing it with two hands and pulling it to the right .

Step 9



- Unclip the black connector by squeezing both sides and pulling them apart.

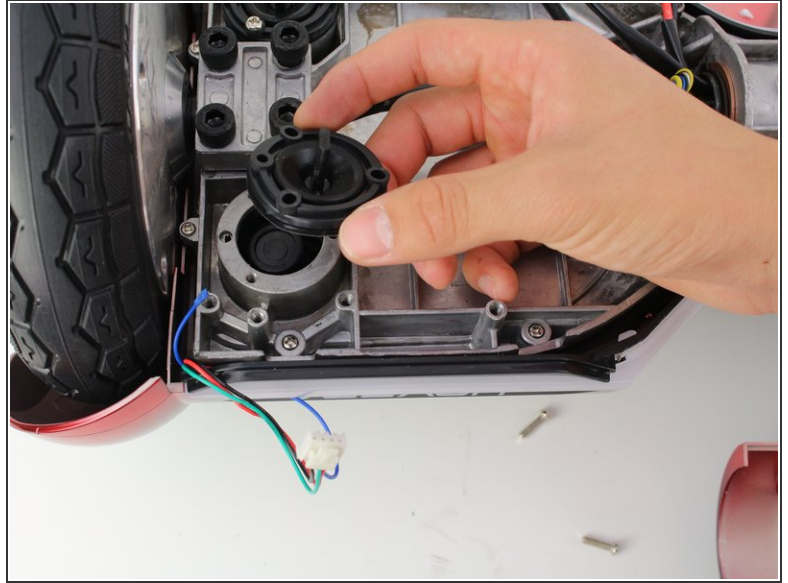
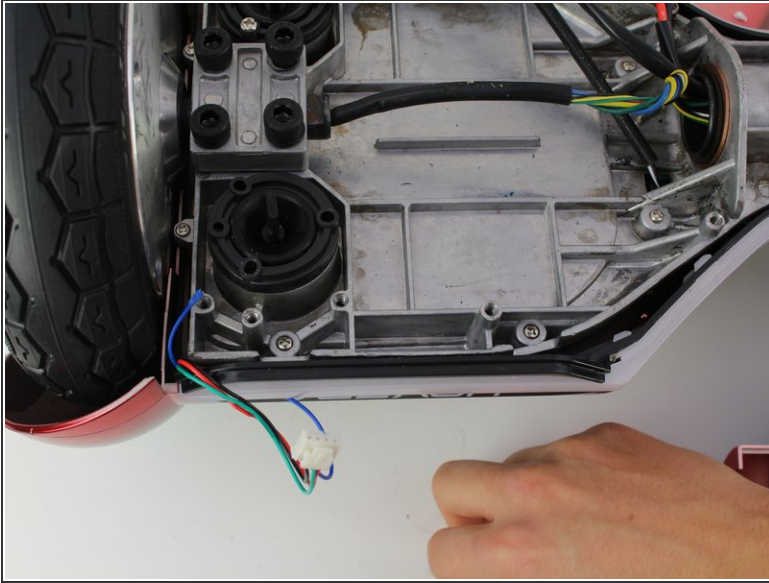
Step 10 — Left Balancing Sensors



- Remove the three 10 mm Phillips #1 screws connecting the balance sensor to the hoverboard.

⚠ The balance sensor tabs are made of sensitive rubber. Screw them back on slowly, and do not over-tighten.

Step 11



- Remove the sensor tab by carefully lifting it away from the hoverboard.

To reassemble your device, follow these instructions in reverse order.