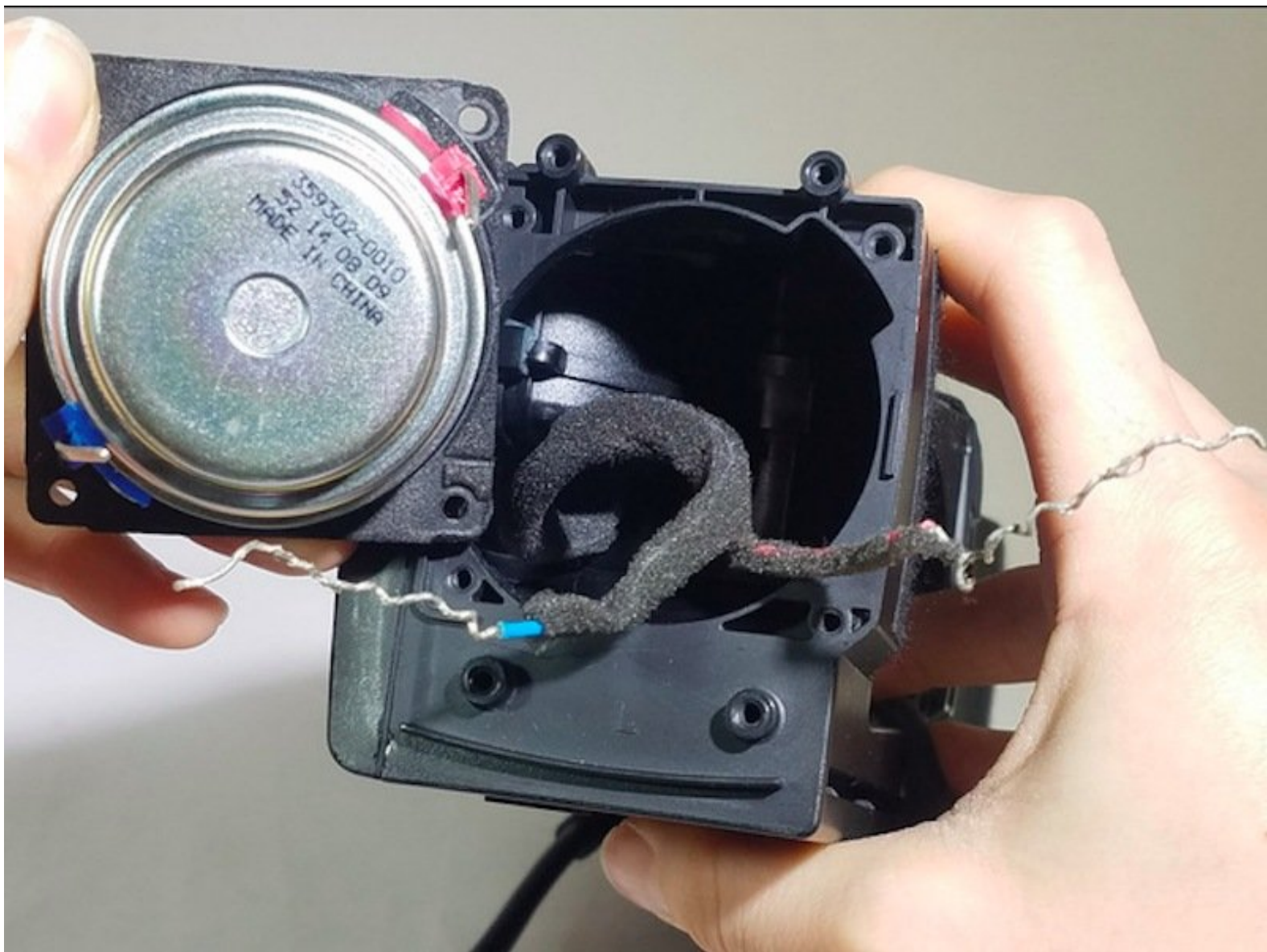




Bose Cinemate 10 Subwoofer Replacement

After completing this replacement guide, you will be able to replace the subwoofers from either side of the soundbar.

Written By: Anthony Ledesma



INTRODUCTION

The Bose Cinemate 10 contains four subwoofers throughout the whole console. This replacement guide is for the two subwoofers that are located on the soundbar's left and right side.



TOOLS:

- [Phillips #1 Screwdriver](#) (1)
 - [iFixit Opening Tools](#) (1)
-

Step 1 — End Cap



- Using the blue plastic opening tool, pry up on the cloth covered end panel. The edge of end cap cover should separate from main body of device.

Step 2



- Using your fingers, lift up on the end cap cover until it separates completely from the main body of the device.

Step 3



- Remove the 4, PH1, 15mm screws on the side speaker cover frame.

Step 4



- Remove speaker cover frame from main body of device.

Step 5 — Subwoofer



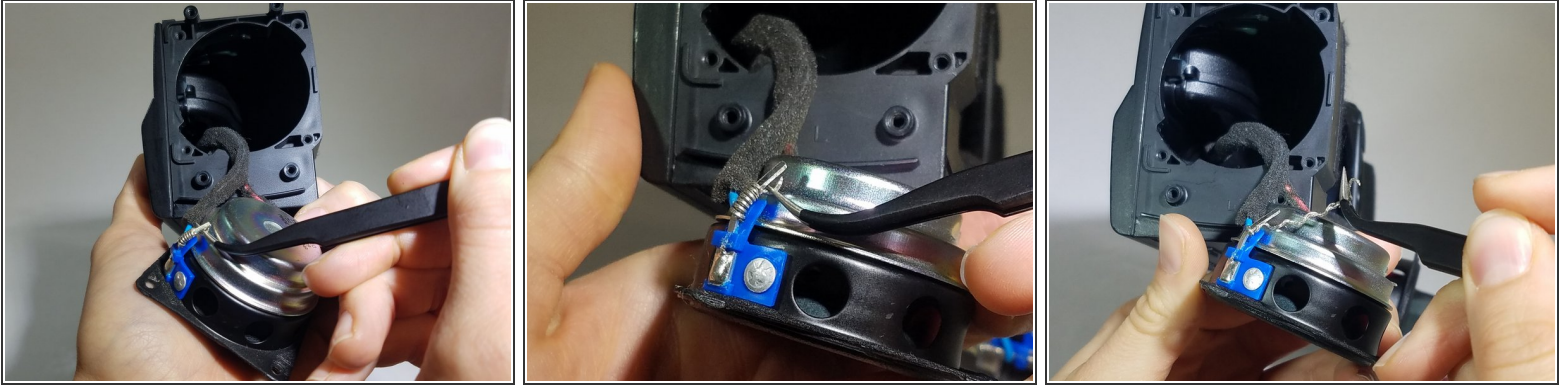
- Remove the 4, PH1, 10 mm screws from the subwoofer frame.

Step 6



- Using the blue plastic opening tool, pry up on the edge of the subwoofer frame.
- Using your fingers, lift up on the subwoofer frame until it separates completely from the main body of the device.

Step 7



- Using the curved precision tweezers, grasp end of wire.
- Using the curved precision tweezers, unravel wire around blue metal post.

Step 8



- After wire is completely unraveled, repeat steps 4 and 5, on red metal post.
- Remove the speaker from the device.

To reassemble your device, follow these instructions in reverse order.