



Asus G53JW-A1 RAM Replacement

This guide is to remove, replace, or add more RAM cards to your ASUS G53JW-A1

Written By: James Woitas





TOOLS:

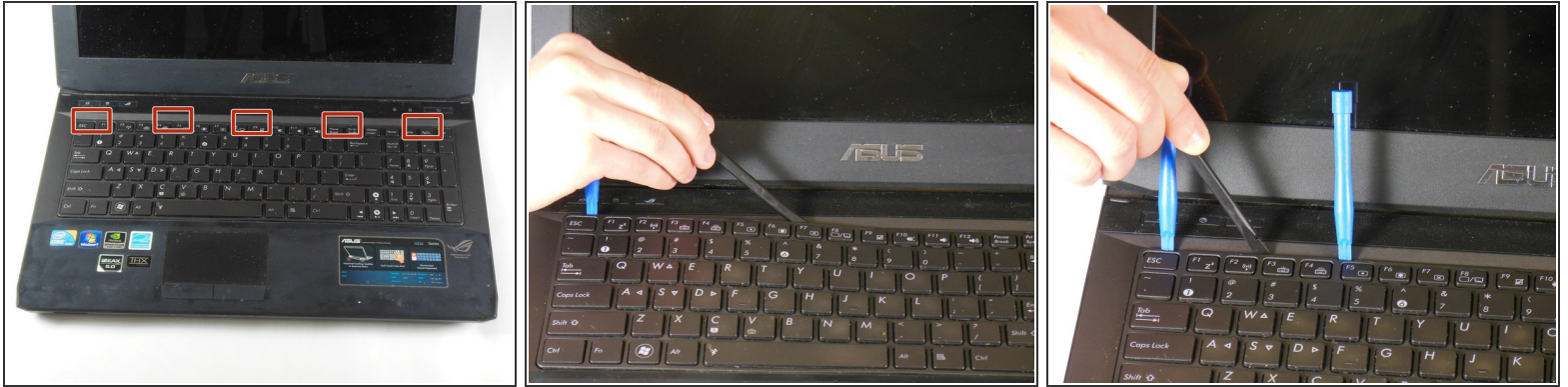
- [Tweezers](#) (1)
- [Phillips #00 Screwdriver](#) (1)
- [Spudger](#) (1)
- [iFixit Opening Tools](#) (1)
- [Phillips #0 Screwdriver](#) (1)



PARTS:

- [PC133 512 MB RAM Chip \(New\)](#) (1)

Step 1 — Keyboard



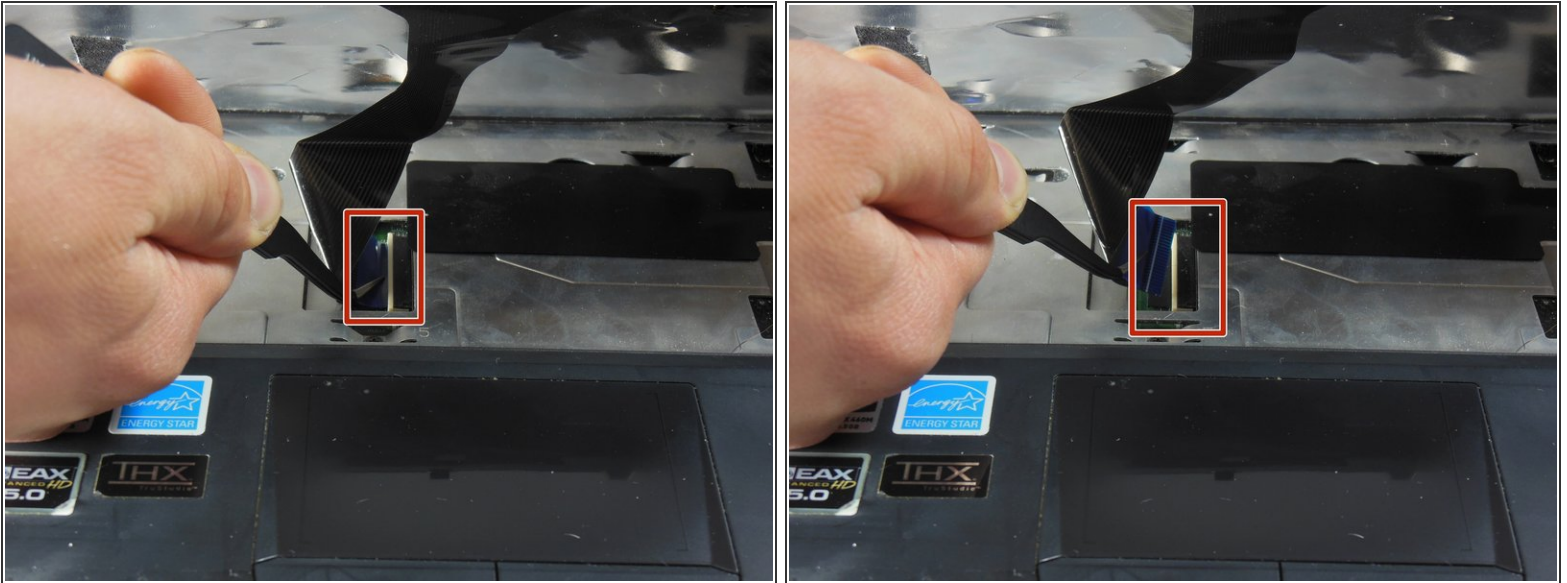
- There are five tabs underneath the keyboard that hold the keyboard in place along the top edge. Refer to the photo for a rough idea of the location of these tabs.
- Using the spudger and iFixit Opening Tool at the indicated locations, pry the keyboard directly up. Ensure that the tools reach under both the plastic keyboard cover and the metal base of the keyboard, as both will be removed.
- ⓘ Once you have a few tools in place, it's possible to slide your tool along the underside of the keyboard and unclip all of the tabs at once.
- Remove the keyboard.

Step 2



- Lift the keyboard so that you can see the housing and cables underneath. Be sure you lifted the metal baseplate of the keyboard and not just the plastic covering.
- This will reveal a ribbon wire on the right side of the laptop connected to the motherboard through a small window in the metal top plate. Use tweezers to carefully pull the connector gently to the left, unplugging it from its port.

Step 3



- Just above the trackpad, there is a second, wider ribbon cable connected to the motherboard. Unplug this cable.

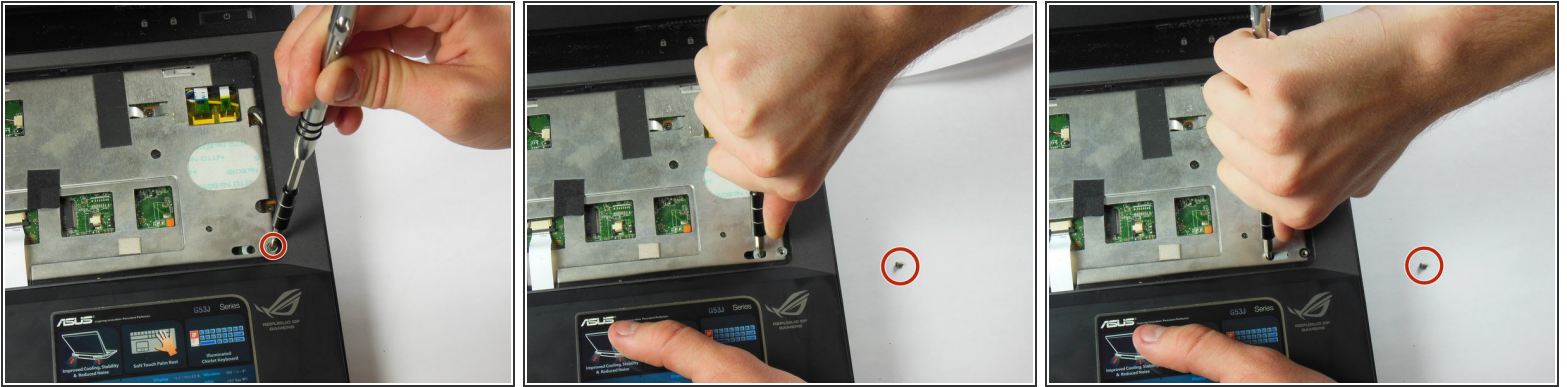
⚠ This cable uses a zero insertion force connector. Read step one of [this article](#) for information on how to safely remove this connector.

Step 4



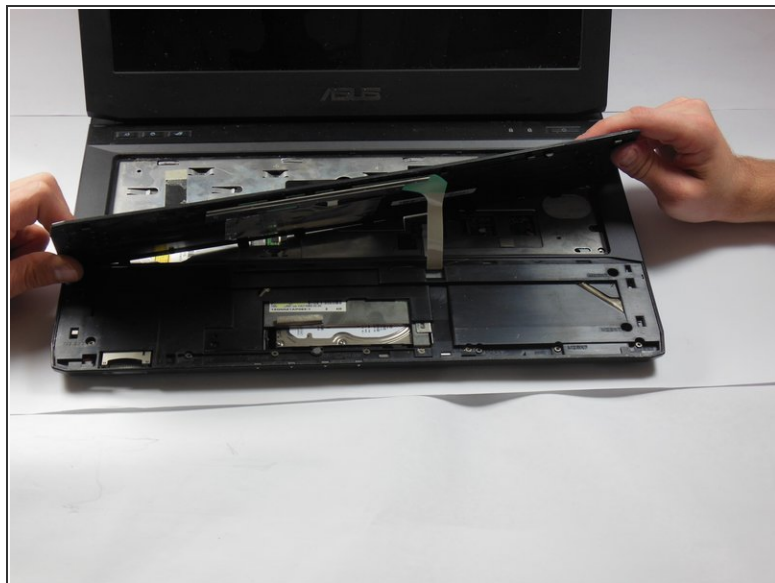
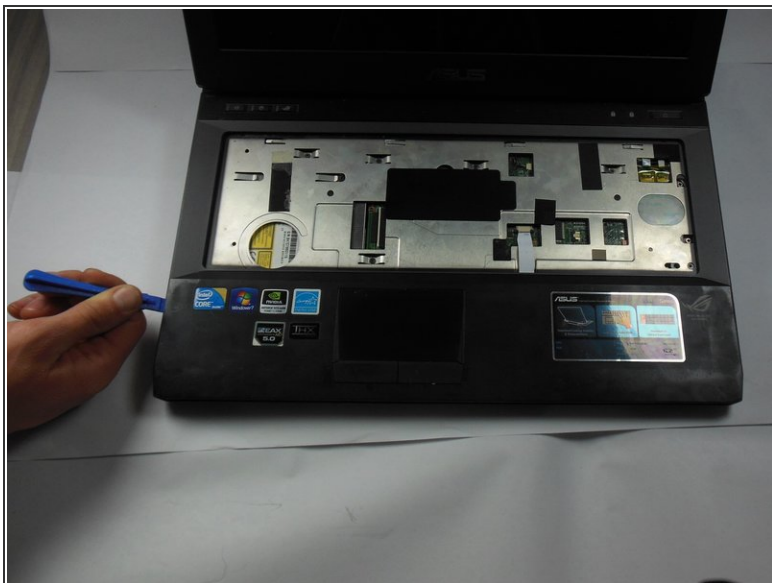
- Remove the keyboard from the computer.

Step 5 — Trackpad Plate



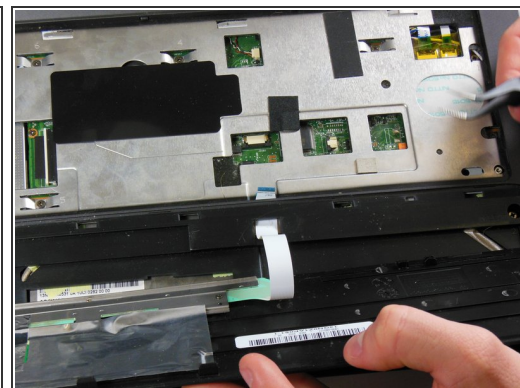
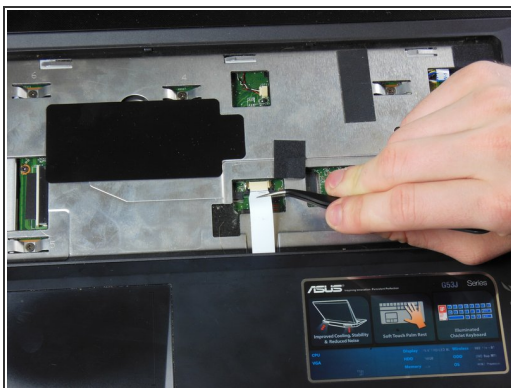
- Locate the 1.5 x 7mm Phillips #00 screw at the bottom right of the keyboard housing.
- Remove this screw. Note that this is the only 1.5x7 mm screw in the entire laptop, so it is very important to keep track of it.
- Place a screwdriver or other firm tool with a fine tip inside the hole to the left of the screw hole. Push all the way to the left to unlock the slide.
- ⓘ It will take a good bit of force to move the slide, as it unlocks a series of clips underneath the trackpad plate.

Step 6



- Use an iFixit Opening Tool to unclip the tabs on the sides of the laptop, just underneath the top plastic cover. Once one of them is off, it should pop off willingly. You may need to slide the tool around the edge like you did for the keyboard.

Step 7



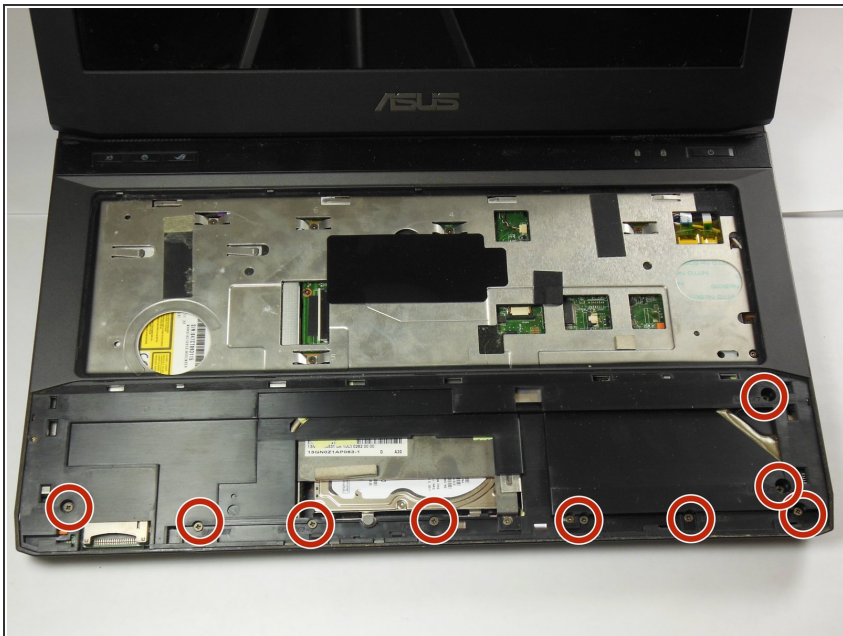
- Tilt the trackpad plate up towards you to reveal a white ribbon cable connecting the trackpad to the motherboard.
- Unplug it using tweezers at the base of the cable, and gently slide it through the wire guide found directly underneath the top of the trackpad plate.

Step 8



- Remove the trackpad.

Step 9 — Underside Panel



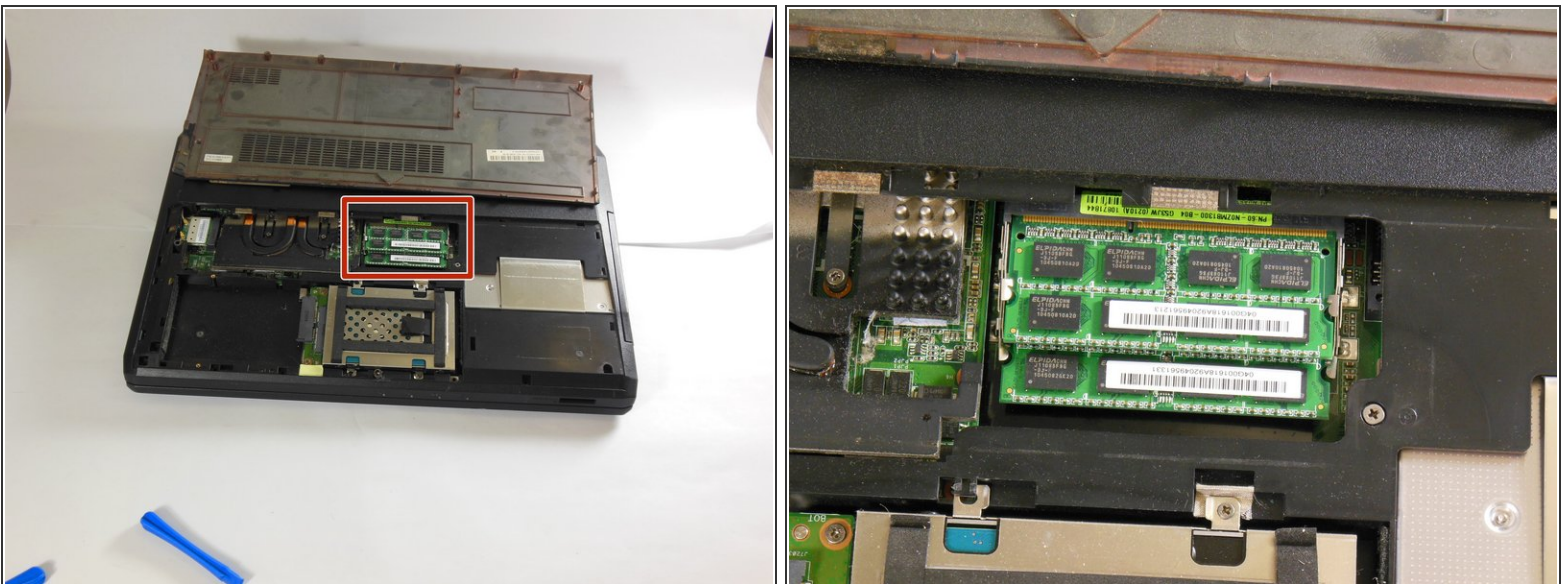
- Unscrew the nine 2.5x7mm Phillips #0 screws highlighted in this image.

Step 10



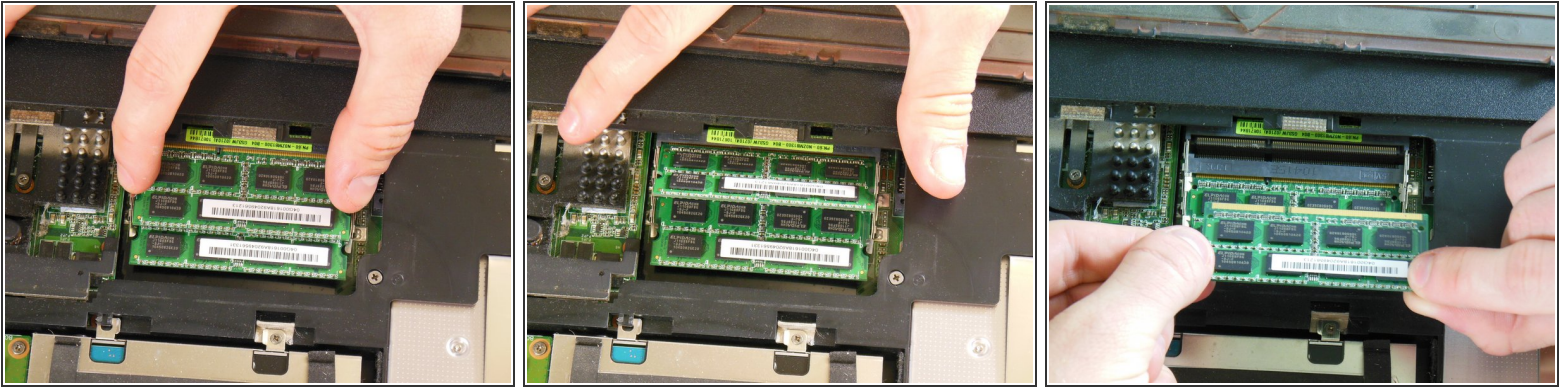
- Close the lid of the laptop and flip it over so that the battery faces away from you.
- Use an iFixit Opening Tool to fit inside the tab exactly opposite the battery pack, and use it to pry off the back cover.
- ❗ If the cover is reluctant to come off, feel free to use a second Opening Tool or a spudger to run along the edge of the cover to help remove it.
- Remove the cover.

Step 11 — RAM



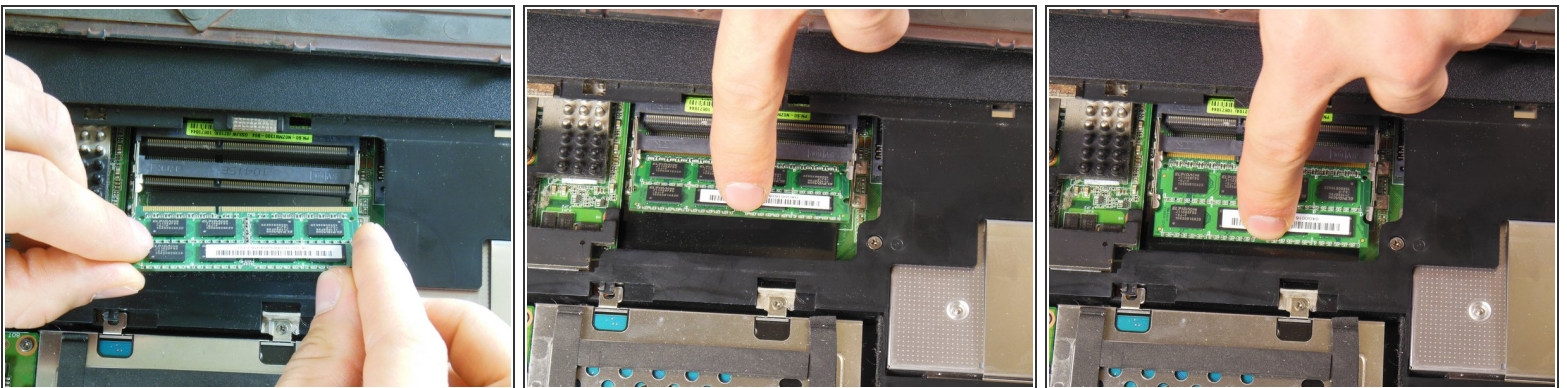
- With the underside plate removed, you can easily access a few RAM chip slots. These are the ones most likely filled with RAM chips from the factory when purchased at retail.

Step 12



- To remove the RAM chips, pull the metal restraining arms to the sides, away from the center of the chip.
- The chip will pop up, allowing you to easily remove it.
- Repeat this process for the second chip, found underneath the first.

Step 13



- To reinstall RAM, slide the chip back into the slot it came from, starting with the lowermost port. The port should be empty and tilted upwards for ease of access.
- Push the card down so that the port rotates with it. The chip will snap into place.

Step 14



i If you want to add additional RAM, more ports can be found underneath the black plastic flap on the top side of the laptop, just under the keyboard. These ports behave the same way as the ones on the backside of the computer.

To reassemble your device, follow these instructions in reverse order.