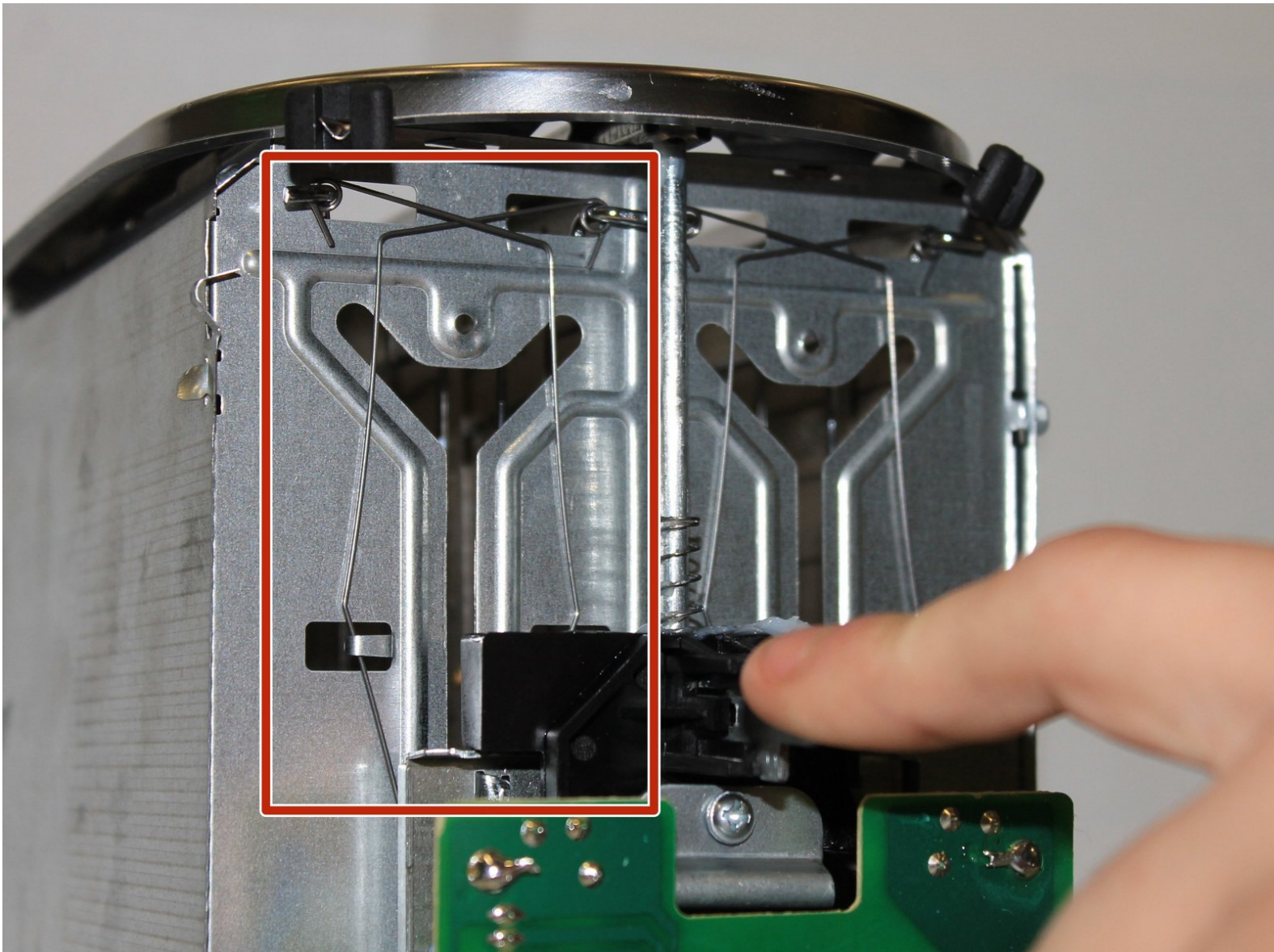




# Brentwood TS-292B Bread Grabber Spring Replacement

A replacement guide for the bread grabber spring on the Brentwood TS-292B.

Written By: Elly Ayala



---

## INTRODUCTION

The bread grabber spring in the Brentwood TS-292B can be removed and replaced with the help of this guide. The bread grabber spring is one of the primary components in the toaster that pops the toast when it's done.

When the toaster is used regularly or kept incorrectly, making the toaster inoperable, the spring may need to be replaced.

Furthermore, because the wire that works as the spring is difficult to bend into the precise shape, this repair may be challenging. This repair may require the use of large needle-nose pliers and a tweezer. This step-by-step instruction will show you how to get your toaster restored in working order.

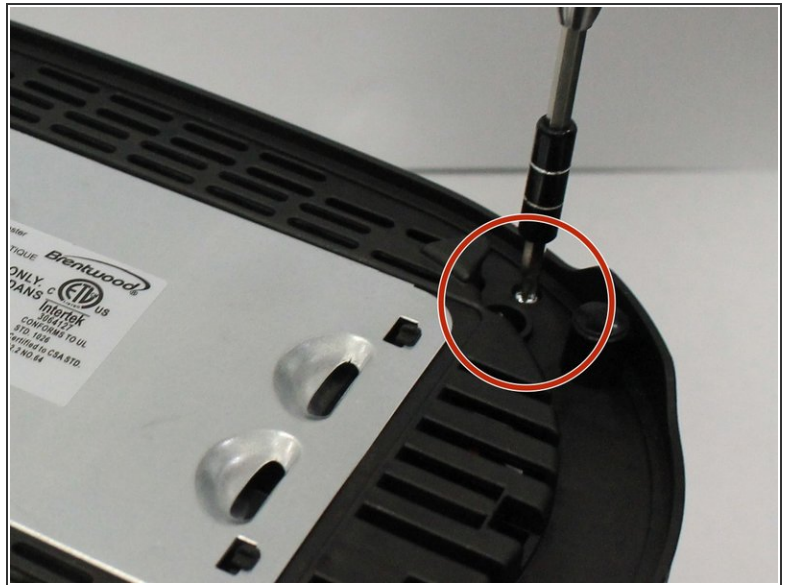
Before beginning, make sure to power off your toaster completely and disconnect from any external power source.



### TOOLS:

- [Metal Spudger Set](#) (1)
  - [Phillips #2 Screwdriver](#) (1)
-

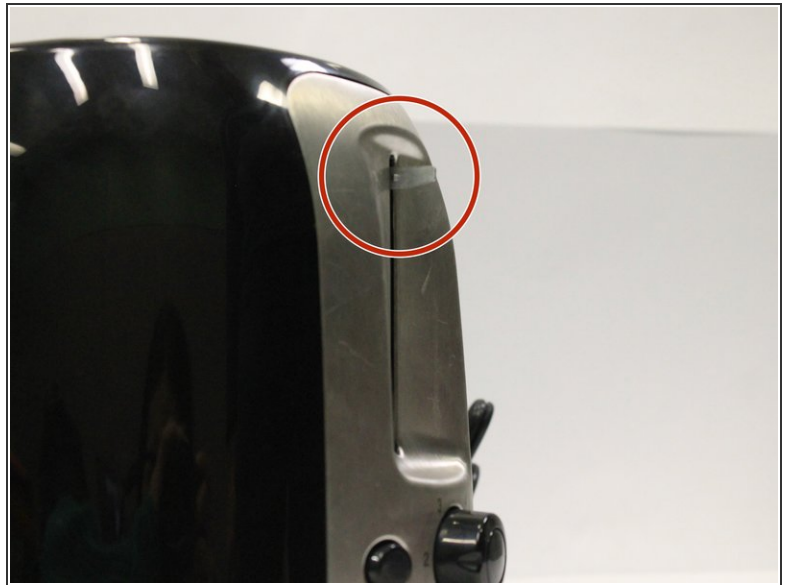
## Step 1 — Bread Grabber Spring



- Turn the toaster upside down.
- Remove the five 6 mm screws with a Phillips #2 screwdriver.



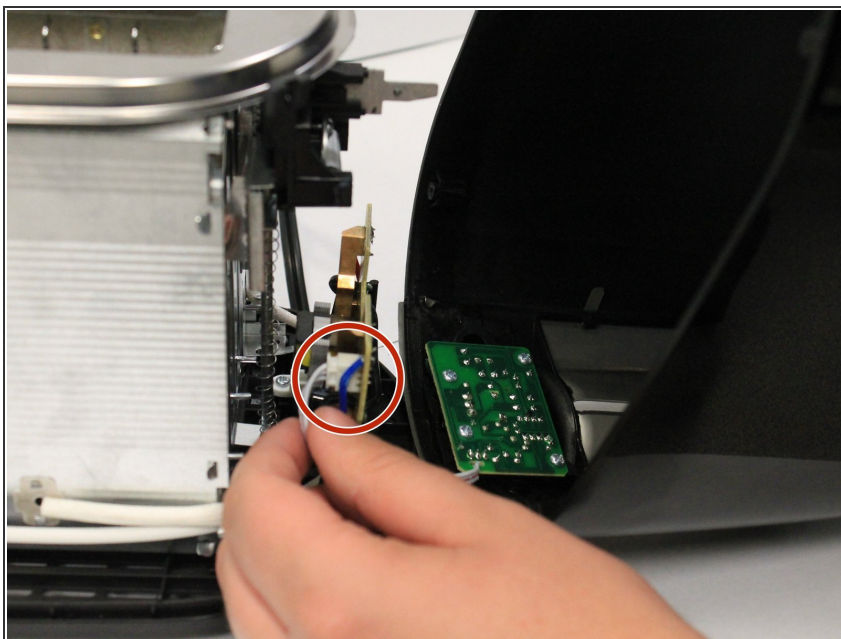
## Step 2



- Grasp the plastic pull lever cover firmly and pull to remove it. This may require force.
- Lift the cover upwards to remove it.

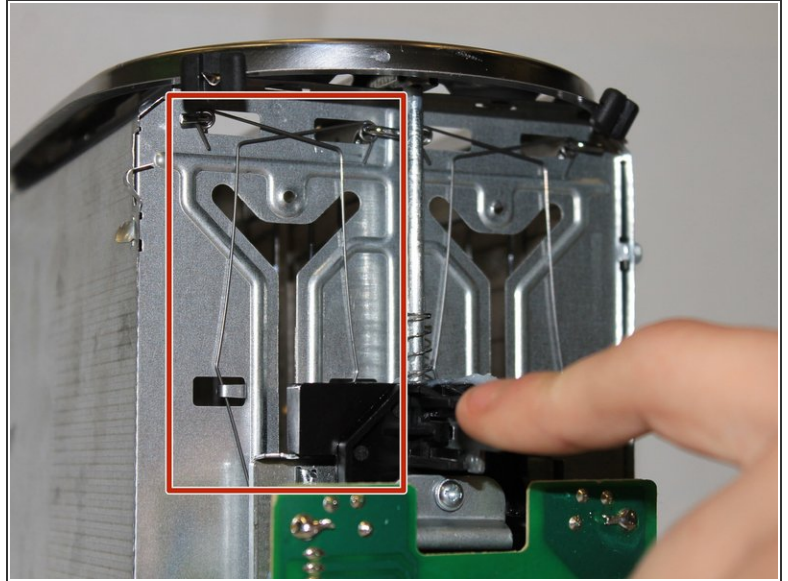
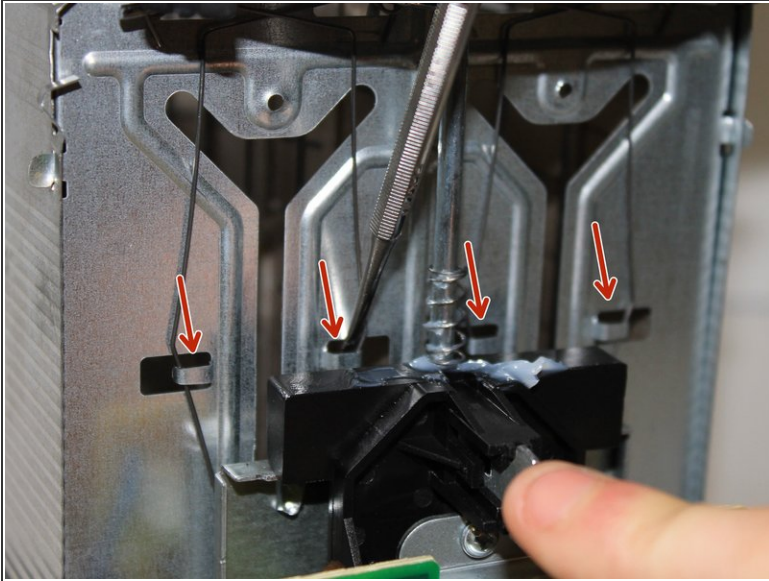
**⚠ When removing the cover, do not damage the cable connector bundle that attaches the cover to the toaster.**

## Step 3



- To detach the bundled cable connector, carefully pull it away from the circuit board.

## Step 4



- Pull the toaster lever down.
- While holding the toaster lever down, use the spudger to pull the metal tabs away from the wired bread grabber.
- Continuing to hold the toaster lever down, pinch the wires inward and pull up to carefully remove them from the toaster.

To reassemble your device, follow these instructions in reverse order.