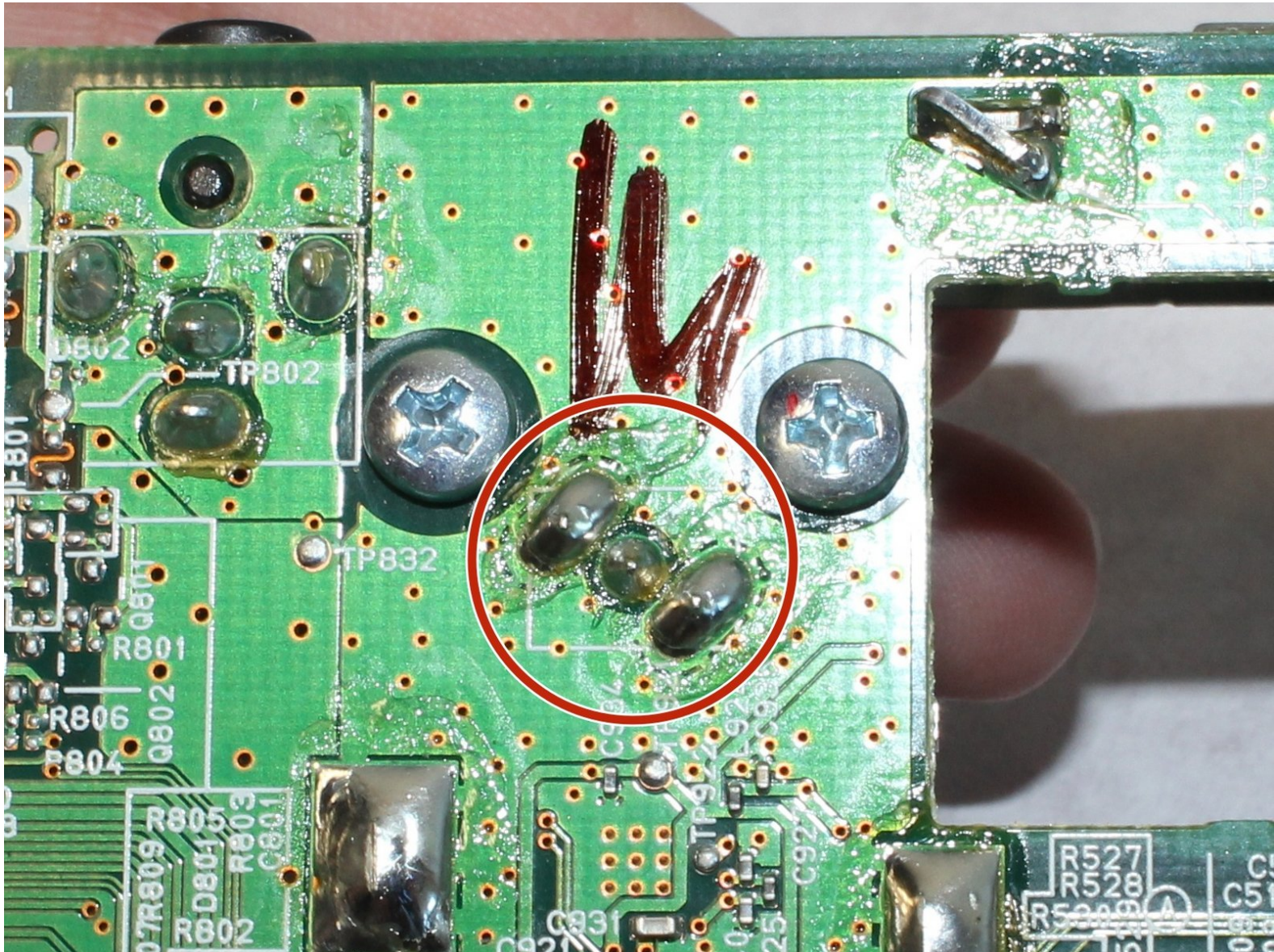




# Kenwood DNX571HD GPS Antenna Connection Replacement

Remove and replace the antenna and connections for the Kenwood DNX571HD car stereo GPS.

Written By: Wendy Zaballos



## INTRODUCTION

If you are having difficulties with the Kenwood DNX571HD GPS functions, the antenna may be faulty. Follow this guide to replace it.

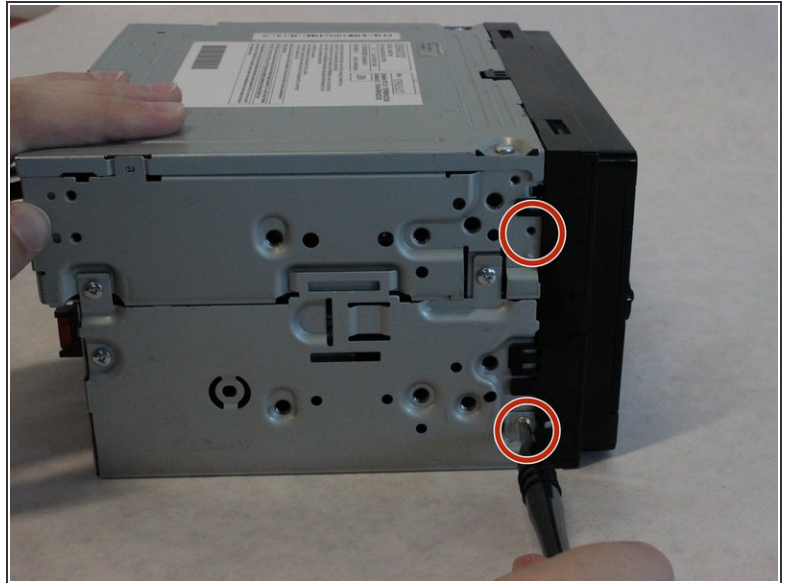
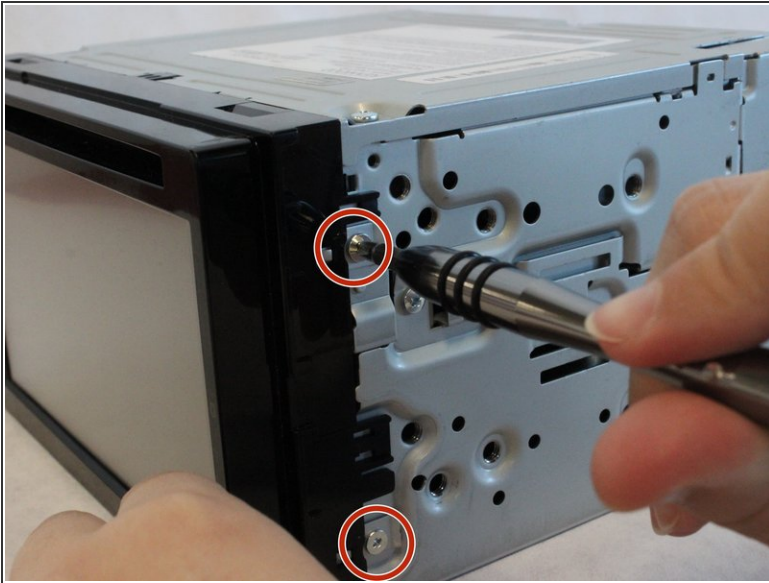


### TOOLS:

- [Phillips #1 Screwdriver](#) (1)
  - [Spudger](#) (1)
  - [ESD Safe Tweezers Blunt Nose](#) (1)
  - [Soldering Workstation](#) (1)
  - [Phillips #2 Screwdriver](#) (1)
-



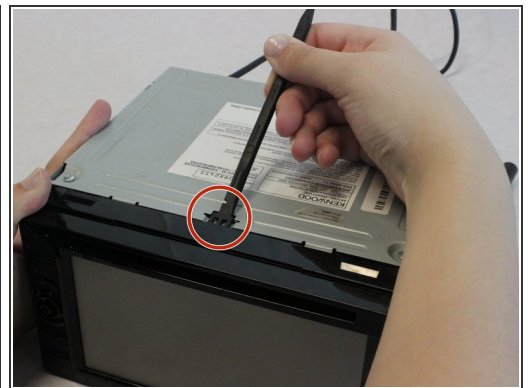
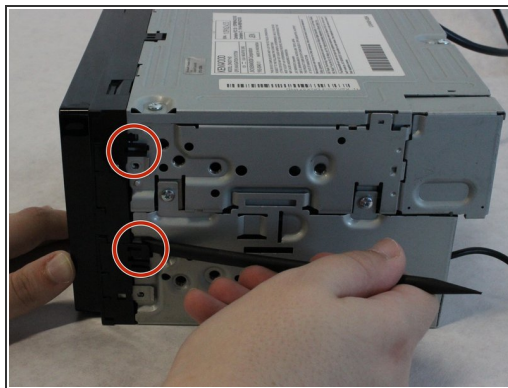
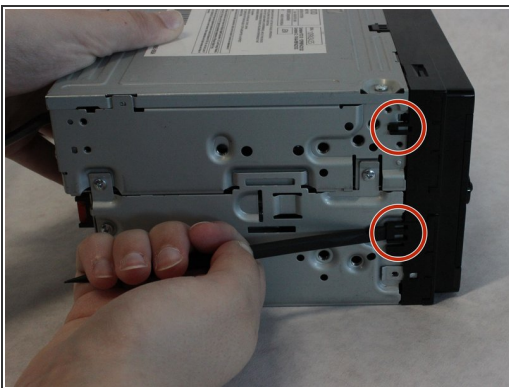
## Step 1 — CD/DVD Drive



- Unscrew the four 3.5mm side screws with a Phillips #1 screwdriver.

**i** There are two screws per side.

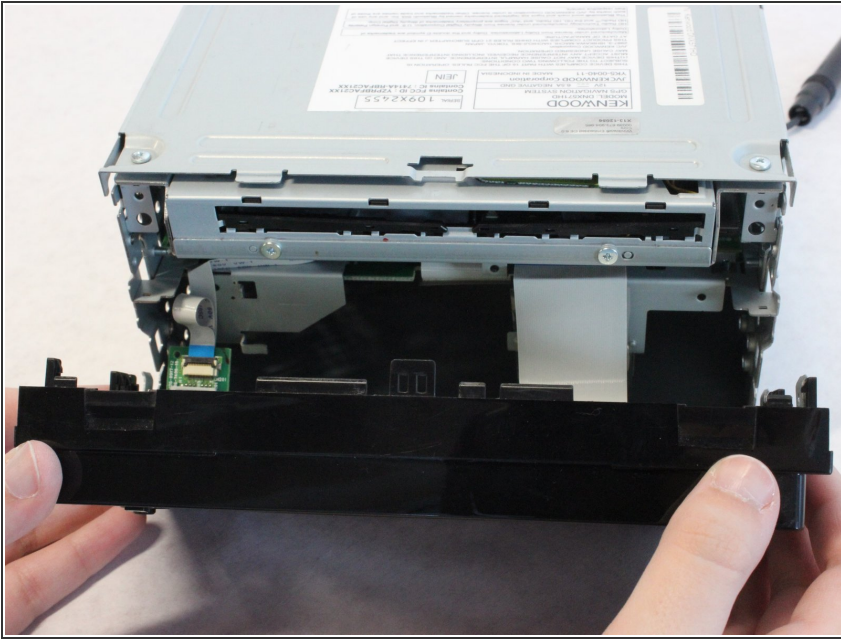
## Step 2



- Use a spudger to unhook the plastic clips on the sides and top of the front panel. There are two clips on each side and one clip on the top.

**i** Place the spudger between the plastic tab and the metal case and gently lift the spudger away from the case.

### Step 3



- Pull the top of the front panel out and down to remove front panel.
- ⚠ Remove the front panel gently so as not to damage the ribbon cables behind it.

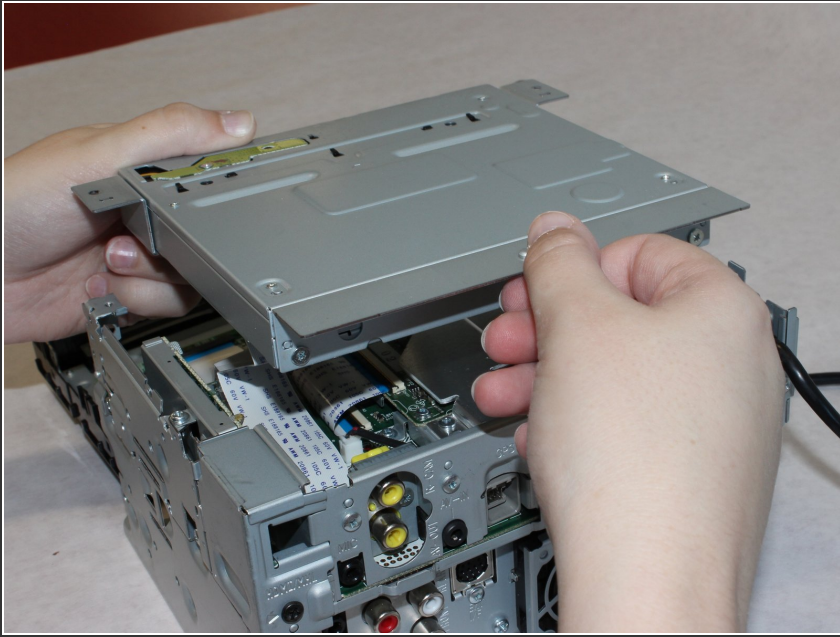
### Step 4




- Unscrew the three 5mm screws from the top of the device using a Phillips #1 screwdriver.
- Lift up to remove the top casing.

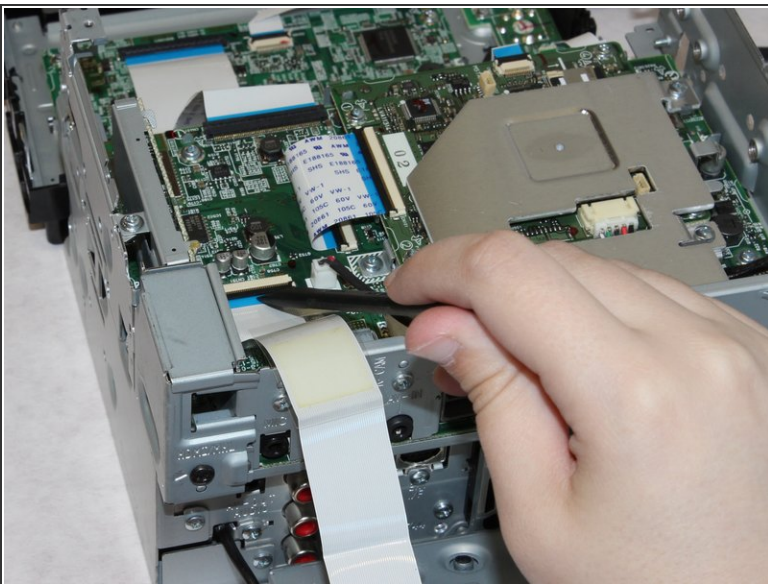


## Step 5



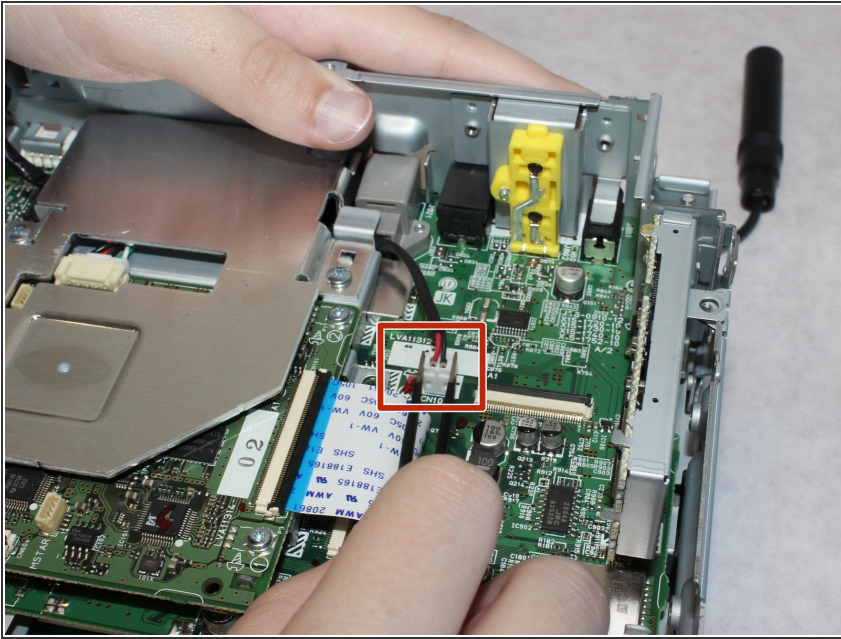
 Lift the CD drive carefully to expose the attached cable underneath.

## Step 6



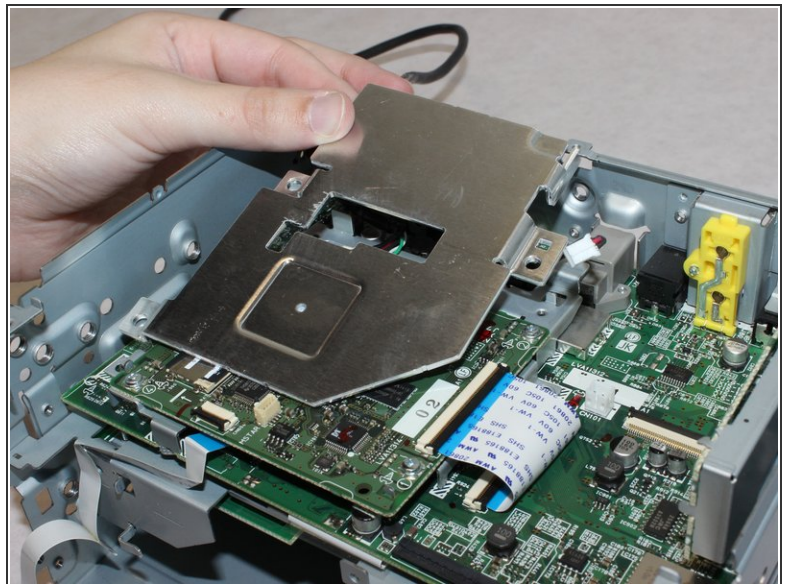
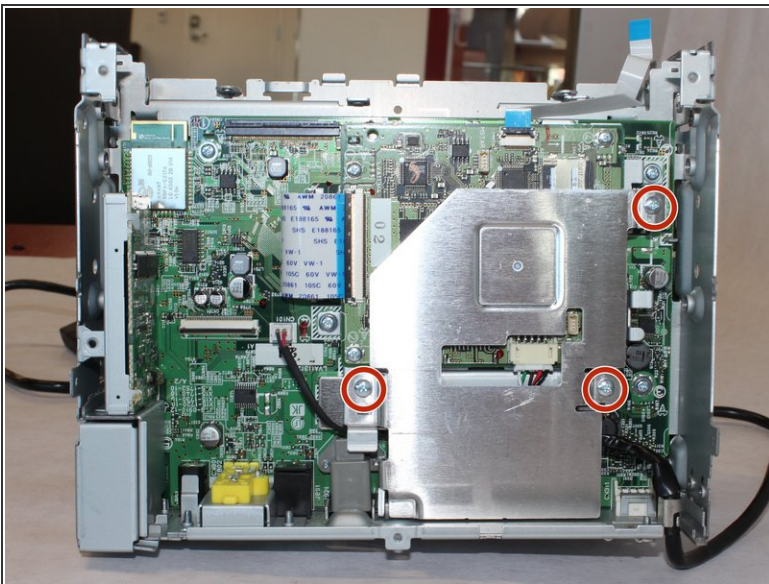
- Flip up the black clasp with a spudger to disconnect the large white ribbon cable connecting the CD drive to the board underneath.

## Step 7 — Cooling Fan



- Carefully unplug the fan power cord with the tweezers.

## Step 8

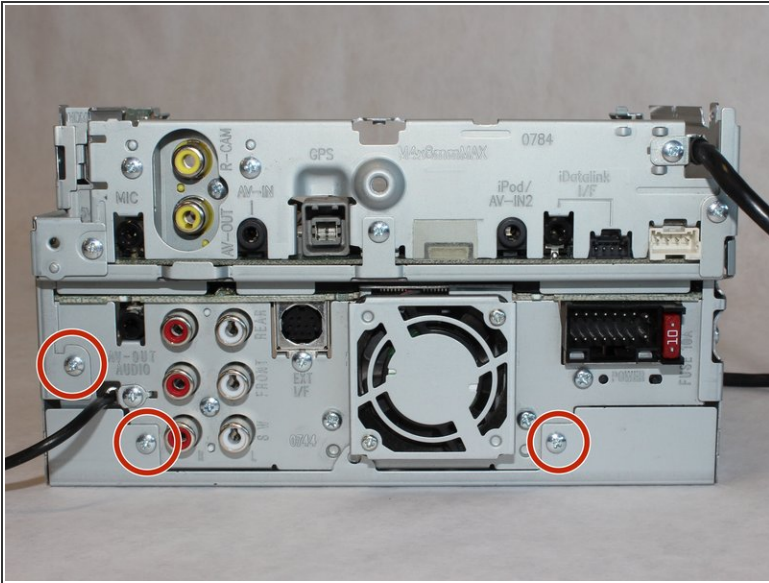


- Unscrew the three 5mm length screws with the Phillips #1 screwdriver.
- Remove the metal plate
- ☑ Removing the plate will damage the heat sink compound. This will need to be replaced during reassembly.

This document was generated on 2020-11-28 07:03:26 AM (MST).

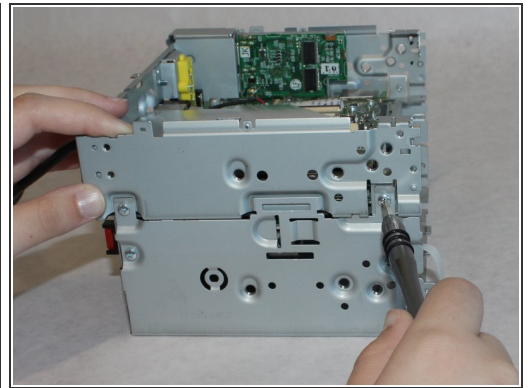
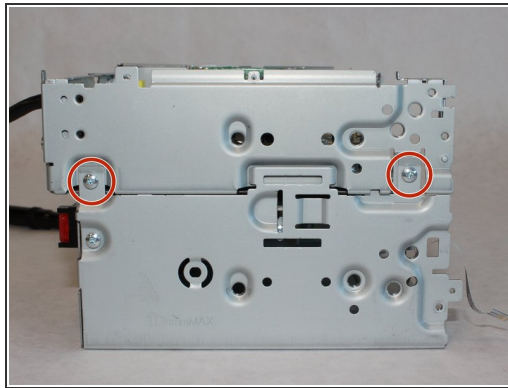
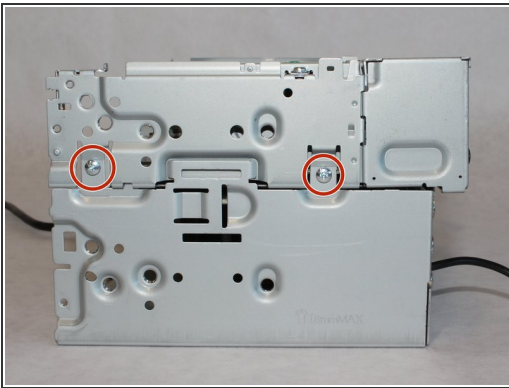


## Step 9



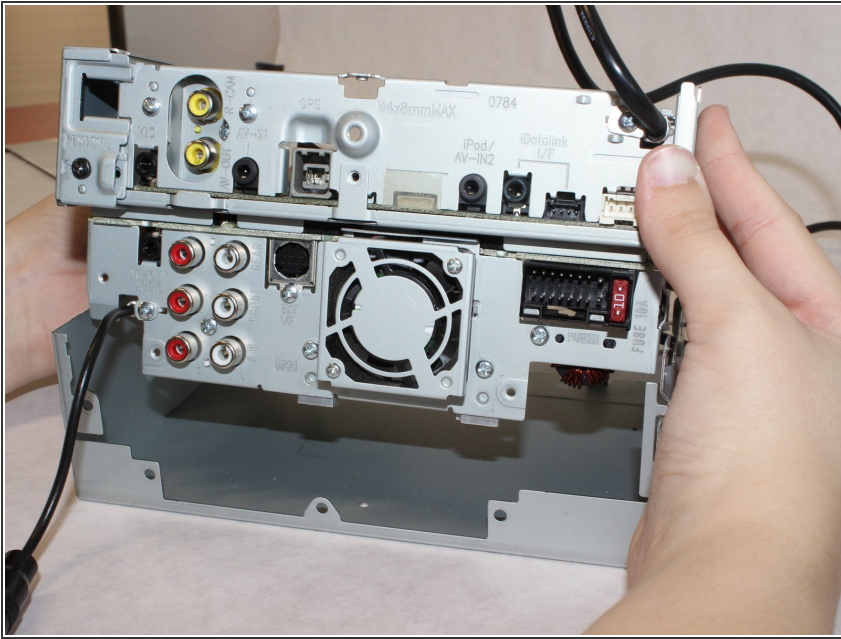
- Unscrew the three 5.5mm long screws with a Phillips #1 screwdriver.

## Step 10



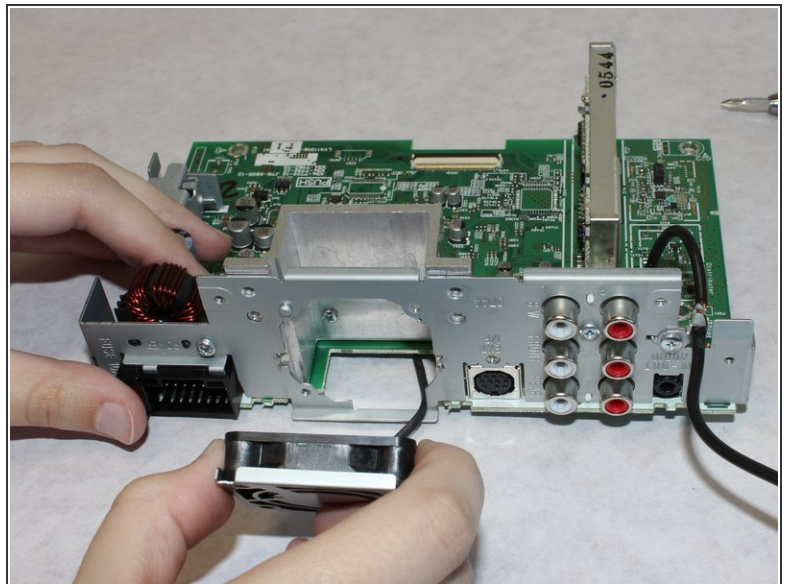
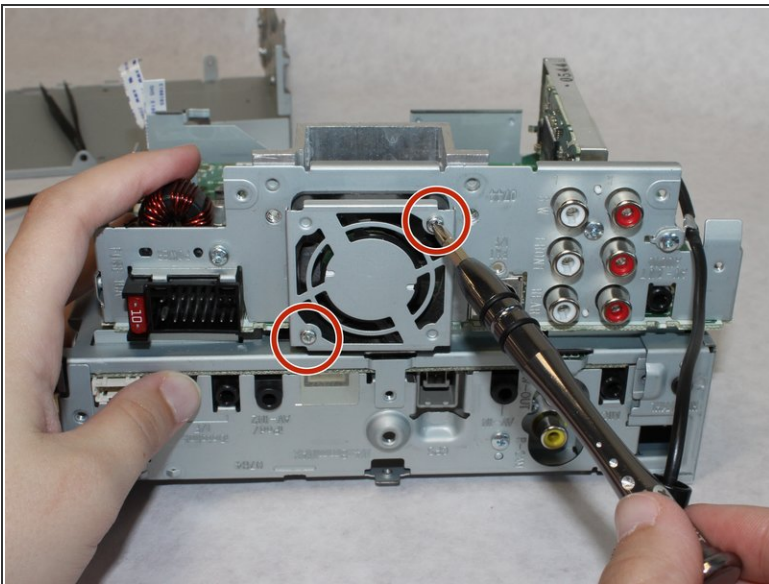
- Remove the four 5.5mm screws with the Phillips #1 screwdriver.

## Step 11



- Lift the top part of the unit up from the lower chassis.

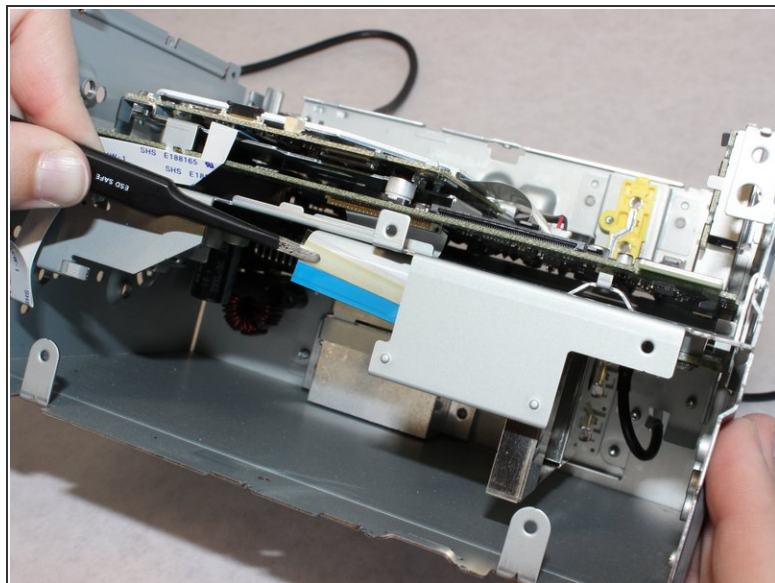
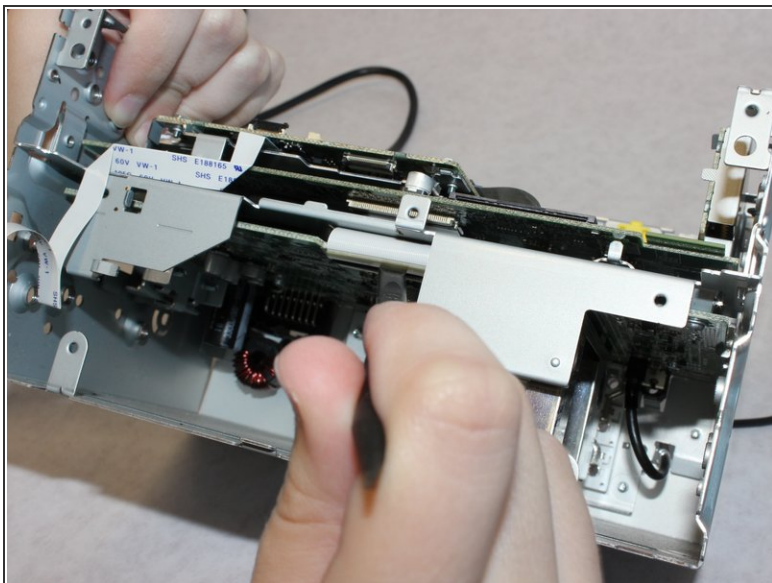
## Step 12



- Remove the two 13mm long screws with a Phillips #1 screwdriver.
- ⓘ Gently thread the power cable through the circuit boards to separate the fan from the body of the stereo.

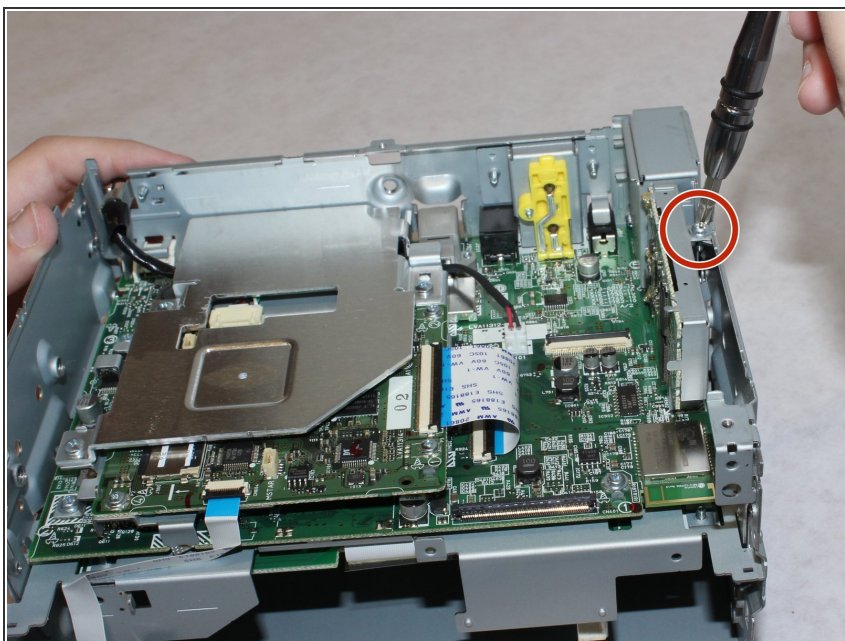


## Step 13 — GPS Antenna Connection



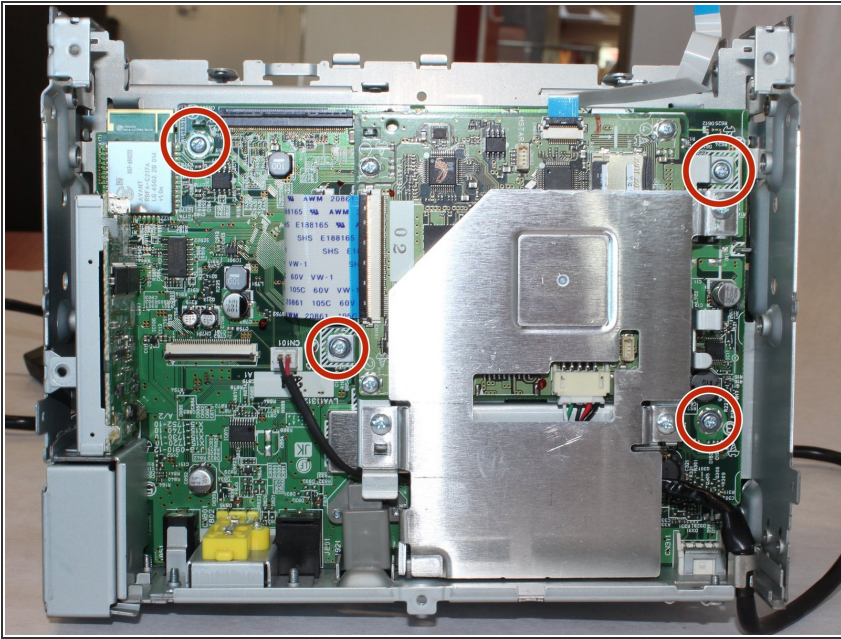
- Using a spudger, undo the clasp to disconnect the large white ribbon cable.

## Step 14



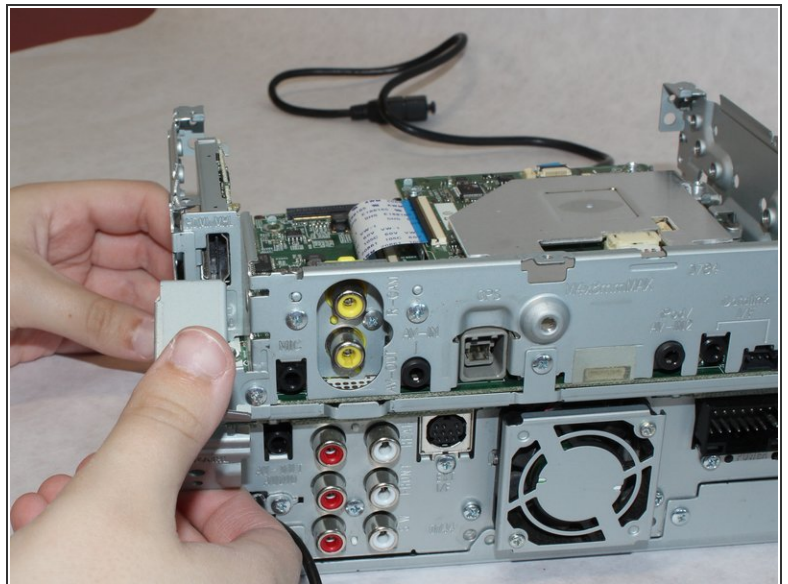
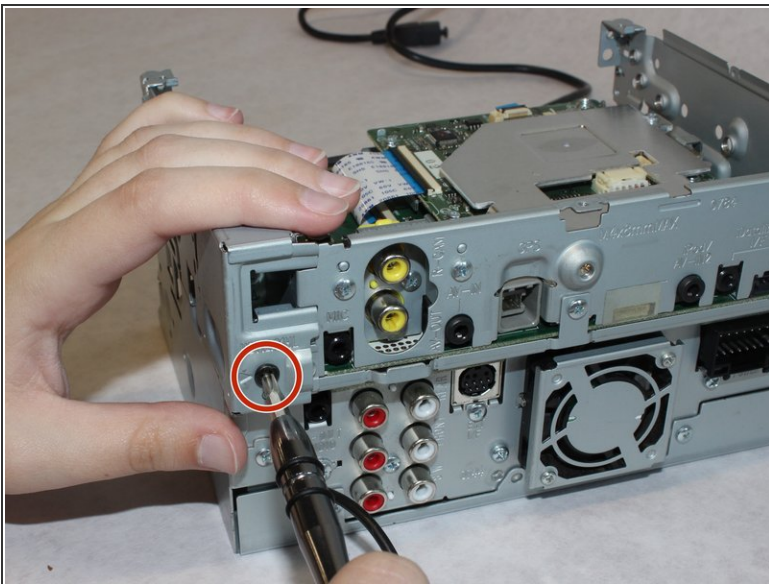
- Remove the 5mm screw with teeth from the casing with a Phillips #1 screwdriver.

## Step 15



- Remove the four 5mm screws with a Phillips #1 screwdriver.

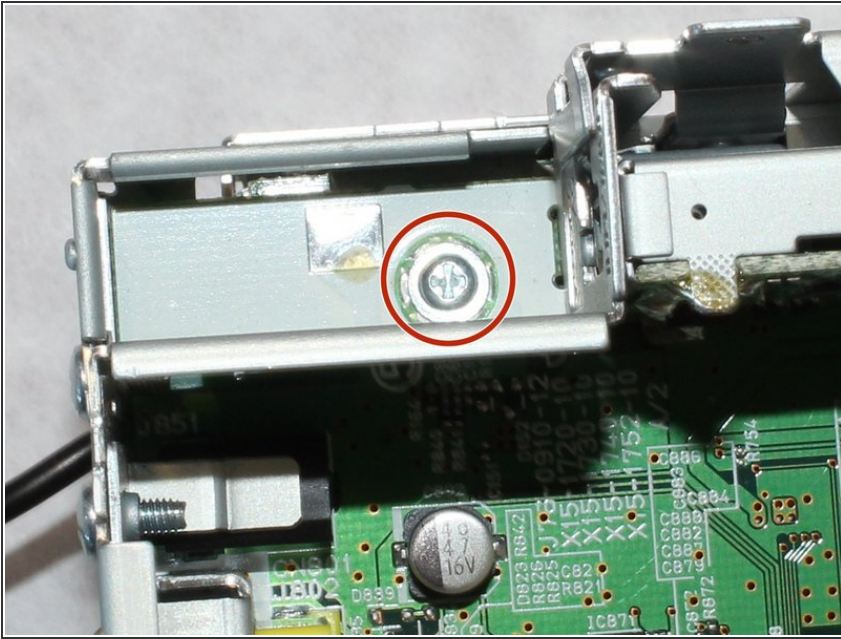
## Step 16



- Remove the 5.5mm screw from the HDMI cable cover using a Phillips #2 screwdriver.

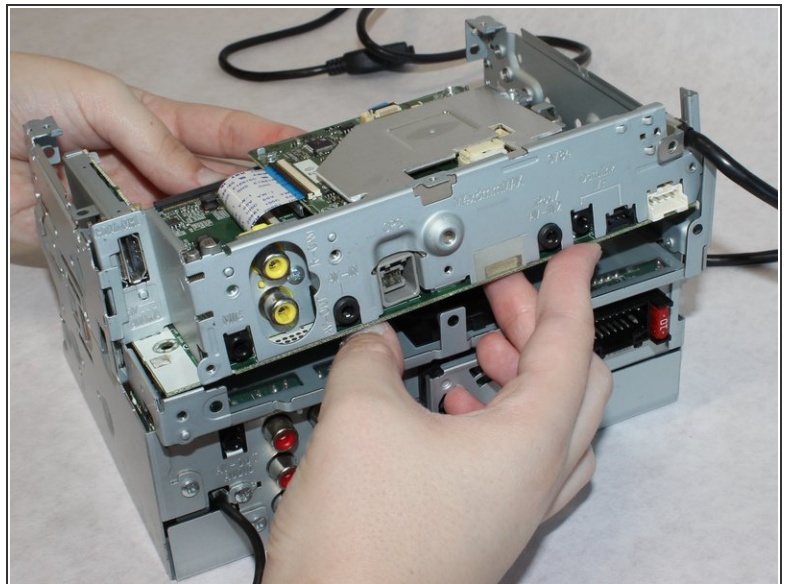
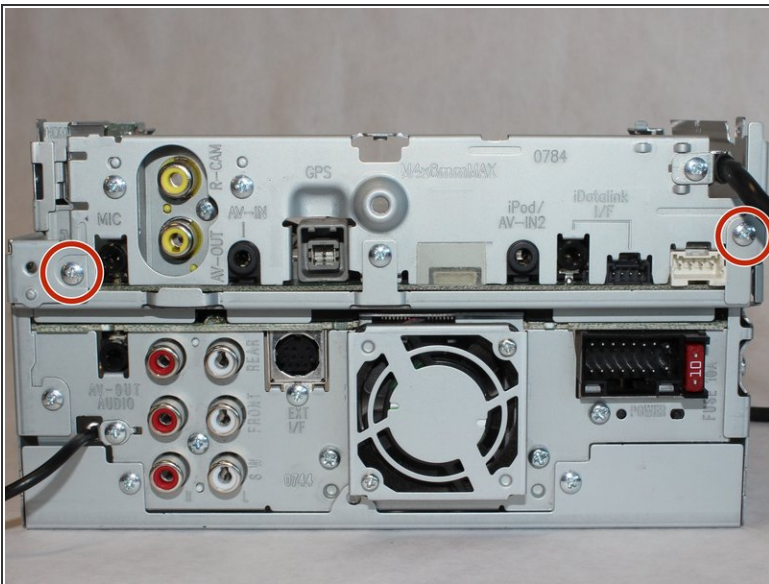


## Step 17



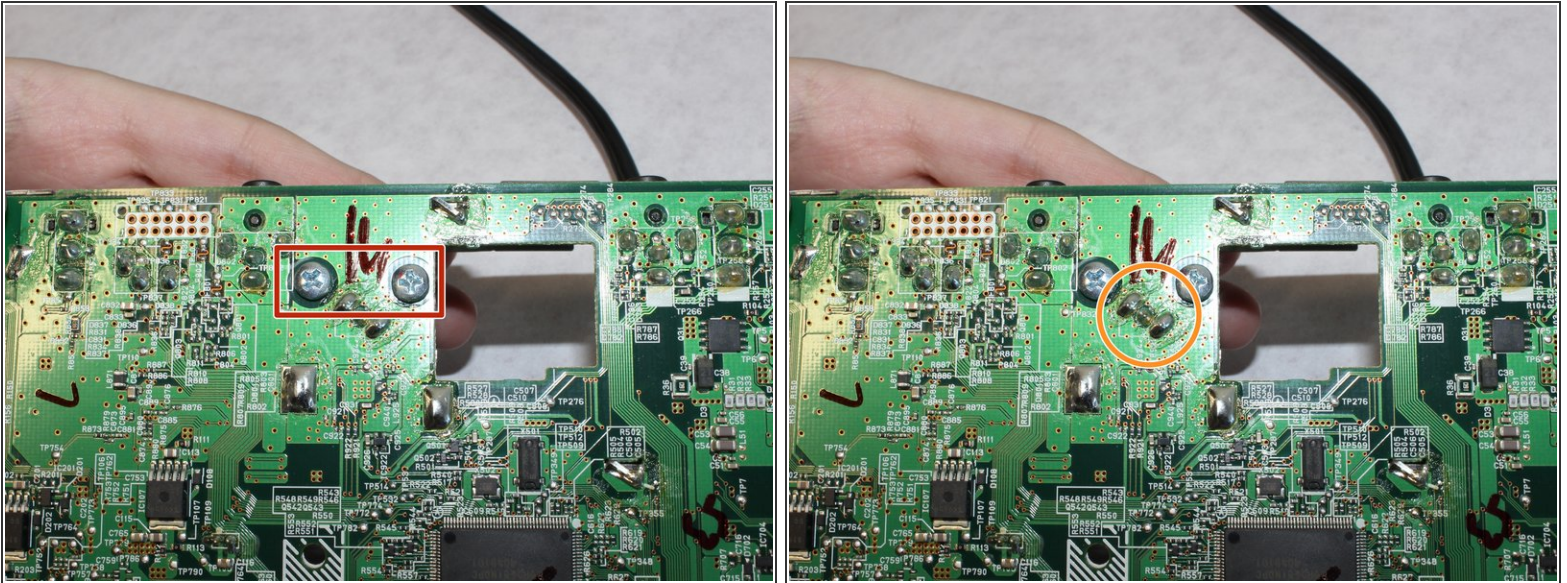
- Remove the 5mm screw with a Phillips #1 screwdriver.

## Step 18



- Remove the two 5.5mm screws from the back.
- Lift the upper portion of the stereo free from the chassis.

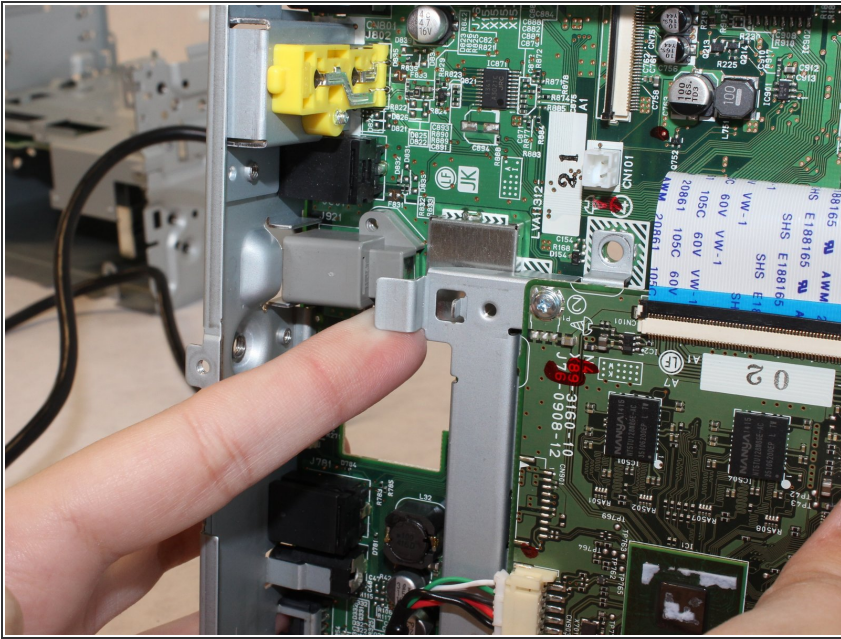
## Step 19



- Remove the two screws underneath the GPS connector.
  - Desolder the GPS connector.
- i** The GPS antenna is a thru-hole-mounted device. You must apply heat to each soldered pin individually and pull them out of the holes while the solder is molten.
- !** The solder material, pins, and any surrounding material will get VERY hot while melting the connections. Do not touch any metal parts during the desoldering process and give the device time to cool off once you're finished. It may also be good to take breaks so that the electronics aren't kept hot for extended periods of time.



## Step 20



- To remove and reinsert the connector, on the top side of the board, use your finger to gently lift the metal plate to get enough clearance.

To reassemble your device, follow these instructions in reverse order.