



# **ZTE ZFive G LTE Volume and Power Button Replacement**

This is not a guide for replacing the switch...

Written By: Julian Mendoza



# INTRODUCTION

This is not a guide for replacing the switch assembly, only for replacing the plastic covers to the buttons.

---

## TOOLS:

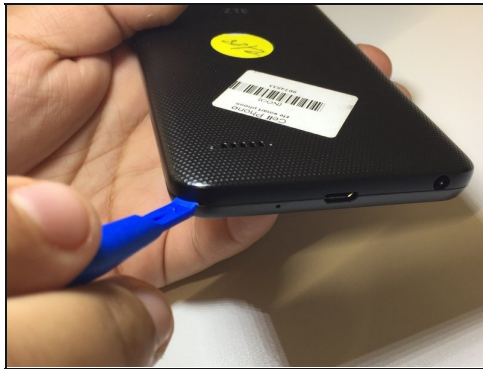
[iFixit Opening Tool](#) (1)

[Tweezers](#) (1)

[JIS #000 Screwdriver](#) (1)

---

## Step 1 — Volume and power button



- Remove back cover of the device from the crease of the bottom left corner using opening tool or fingernail.

## Step 2



- Remove the battery with an opening tool or fingernail.

## Step 3



- Unscrew all 16 screws from the mid-frame with a J000 screwdriver.



## Step 4



- Being careful with the device, gently pull up the device body tugging from the inside of the device.
- Be sure to pull away from the device.

## Step 5



- Carefully use a pair of bent nose [tweezers](#) to pull out the button cover. It should come out easily.

---

To reassemble your device, follow these instructions in reverse order.