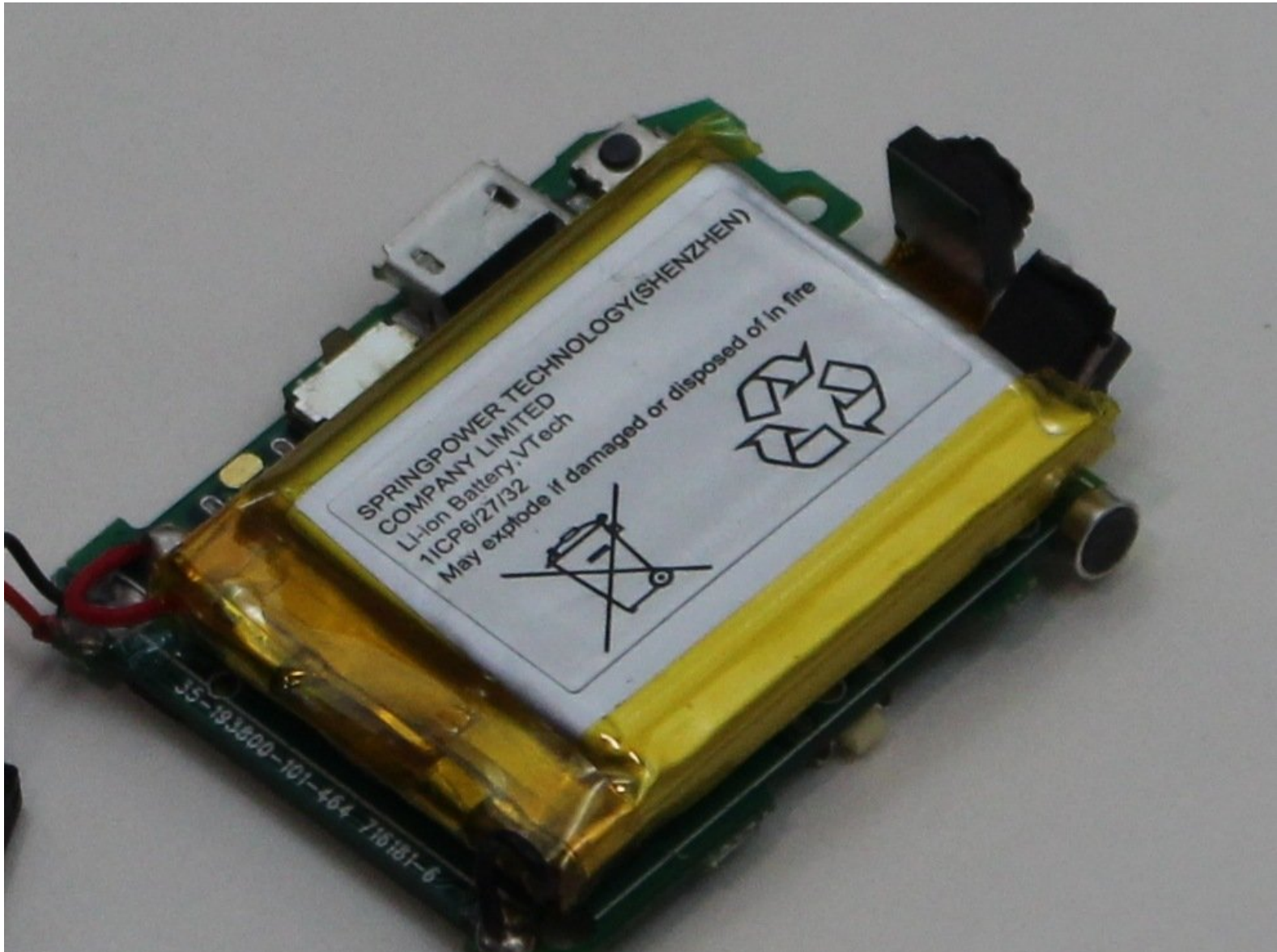




VTech Kidizoom Smartwatch DX2 Battery Replacement

How to replace a VTech Kidizoom Smartwatch DX2 battery.

Written By: Jessica Richard



INTRODUCTION

If your Smartwatch is not charging, and you tested the cables, then the battery may need to be replaced. This guide will show you how to do this.



TOOLS:

- [Soldering Iron](#) (1)
- [Tweezers](#) (1)
- [Phillips #00 Screwdriver](#) (1)
- [Solder](#) (1)



PARTS:

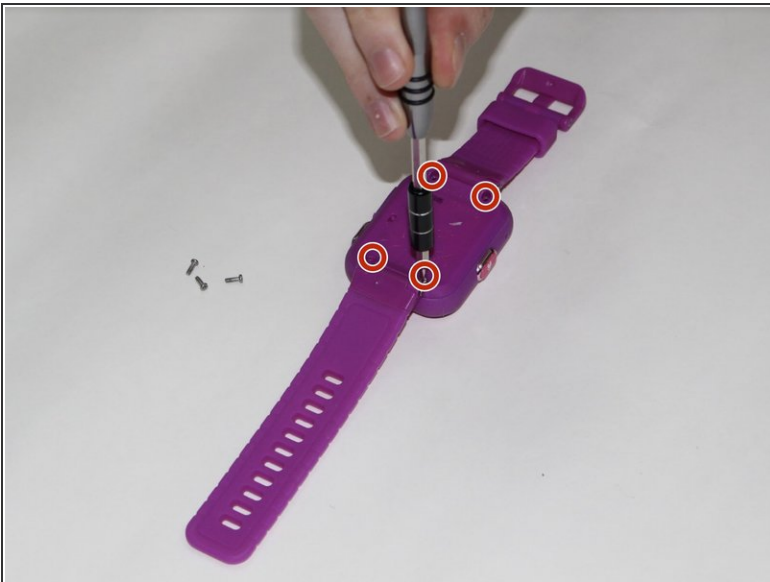
- [Replacement Battery](#) (1)

Step 1 — Master Switch



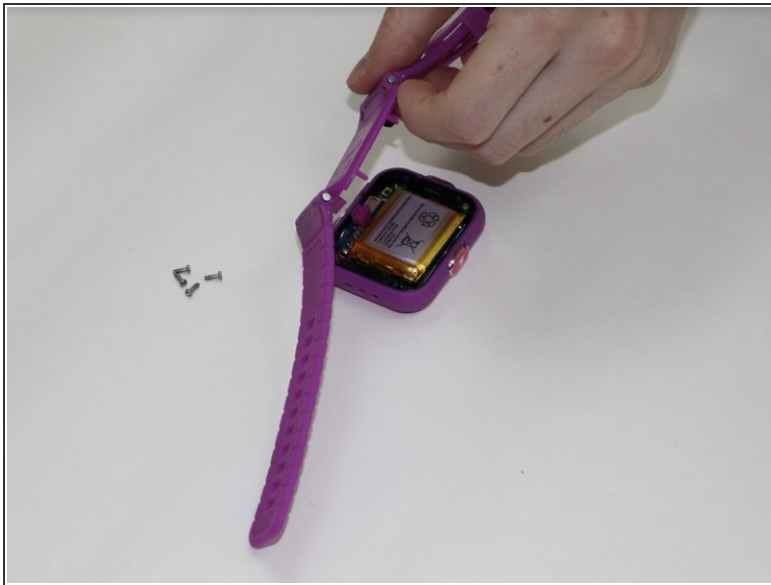
- Begin by flipping the watch over with its back facing upwards.

Step 2



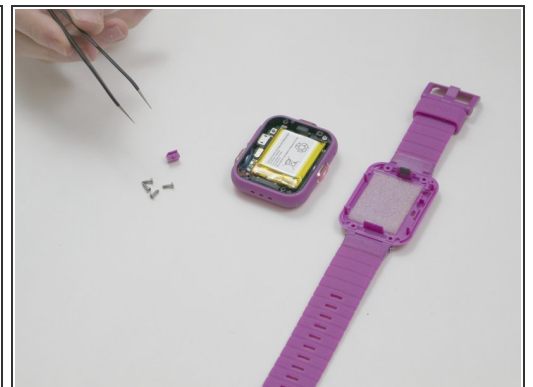
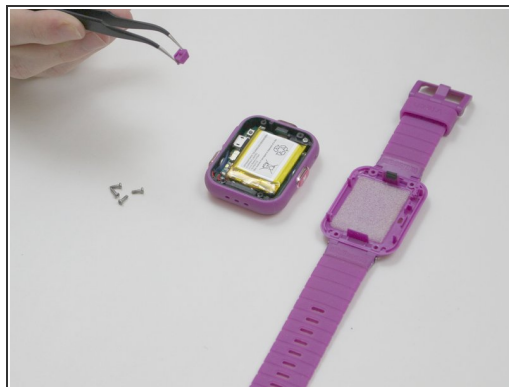
- Next, use the Phillips #00 screwdriver to unscrew the four 6.0 mm screws located in each corner of the watch to remove the backplate.

Step 3



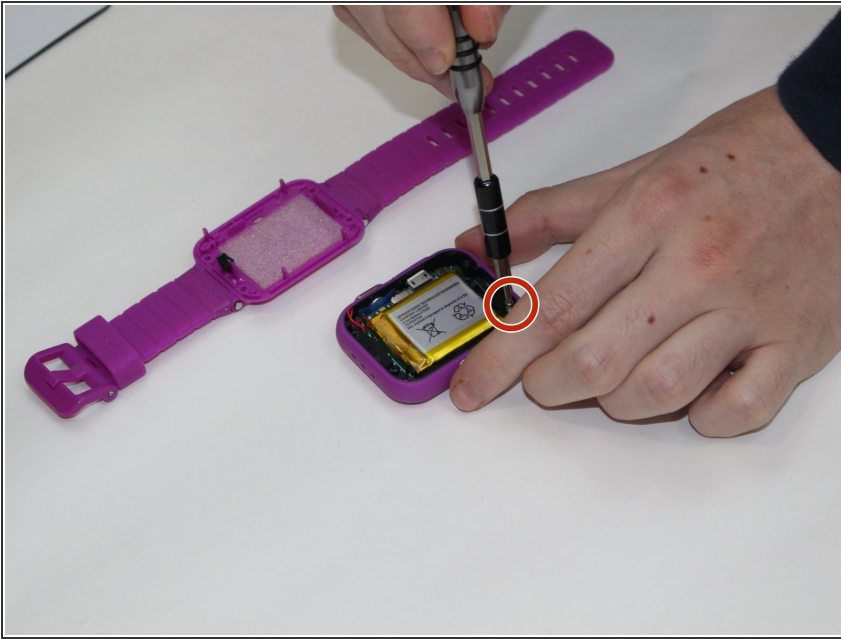
- Gently lift the backplate up to remove it.

Step 4



- After removing the backplate, lift the master switch up from the circuit board.

Step 5 — Motherboard



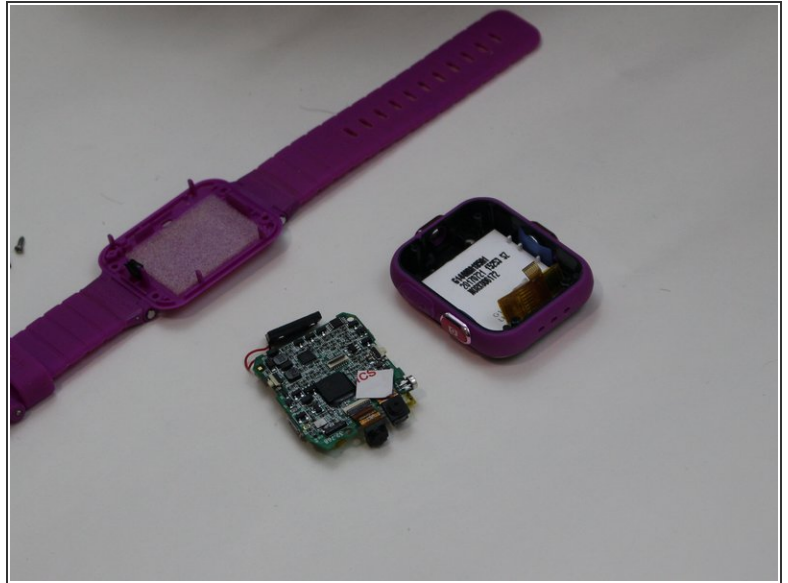
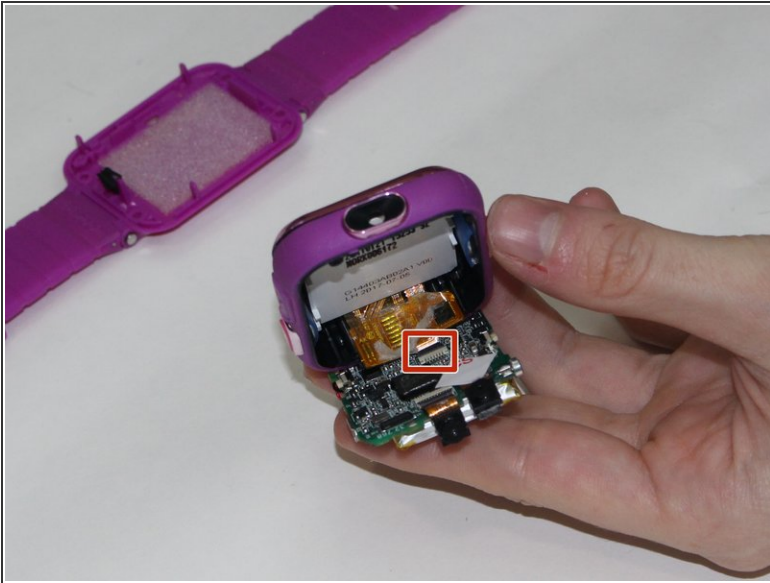
- Using a Phillips #00 screwdriver, remove the 0.6 mm screw.

Step 6



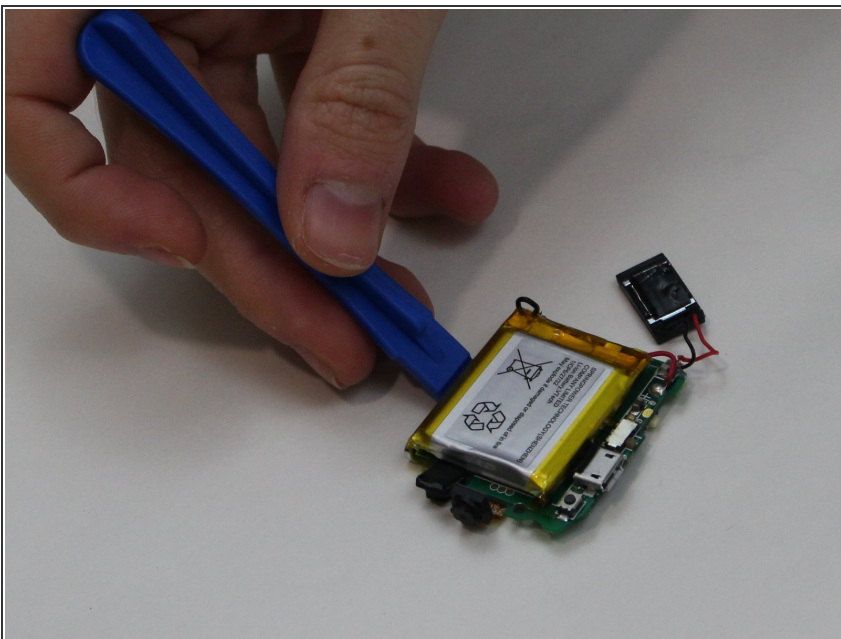
- Carefully remove the speaker from the case without disconnecting it from the motherboard.

Step 7



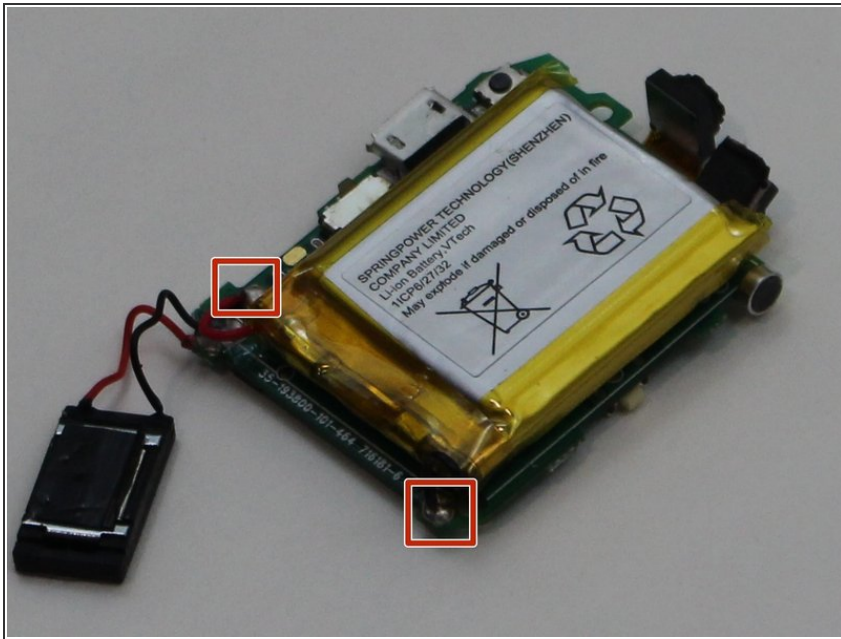
- Using the tweezers, carefully lift the bar holding the connection to the screen.
- Remove the motherboard from the device.

Step 8 — Battery



- Carefully pry the battery off of the circuit board using the plastic opening tool.

Step 9



- De-solder the wires connecting the battery to the circuit board.
- Remove the battery.

To reassemble your device, follow these instructions in reverse order.