



# How to Repair the Broken End of a Garden Hose

Replace the broken end of your garden hose in six easy steps.

Written By: Jilian Whitehead



## INTRODUCTION

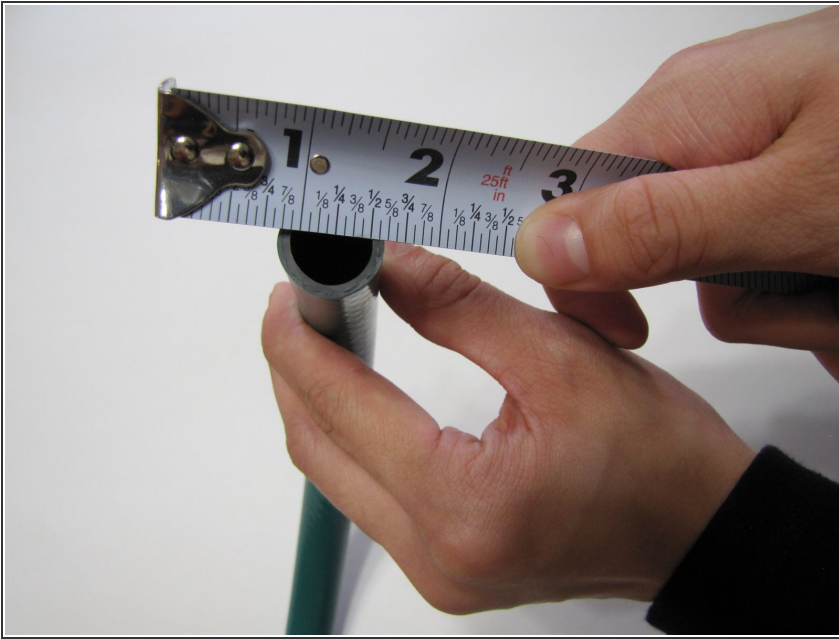
Garden hoses can become crushed or ripped through usage. This guide shows you how to choose the right replacement and change the broken end easily and cheaply.

---

### TOOLS:

- [Measuring Tape](#) (1)
  - [Utility Knife](#) (1)
  - [Phillips #2 Screwdriver](#) (1)
  - [Hose End](#) (1)
-

## Step 1 — How to Repair the Broken End of a Garden Hose



- Measure the diameter of the inside of the original hose.

## Step 2



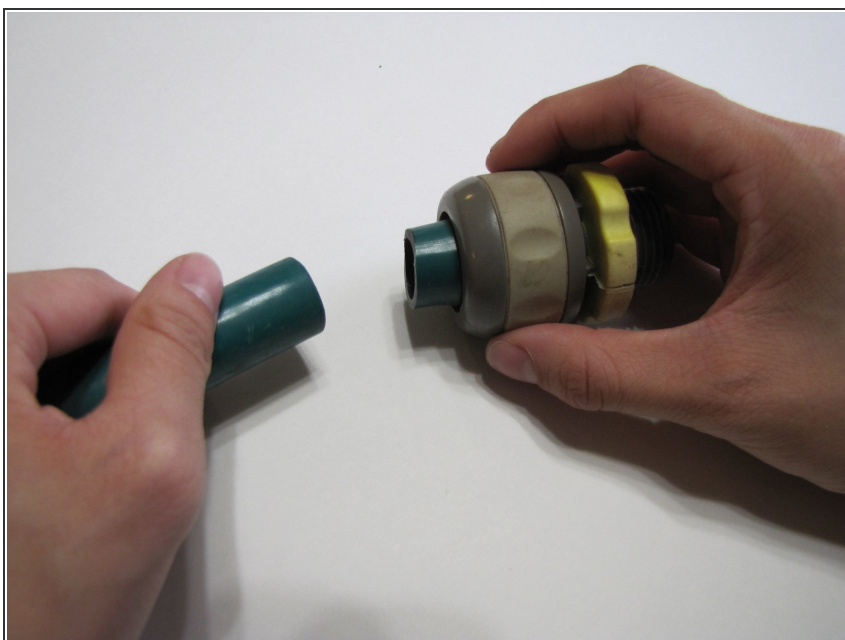
- Choose the right size of the hose end.
- ⓘ Know the difference between the male and female ends (the featured end is female).
- ⓘ Hoses typically come in sizes 5/8", 3/4", and 1/2".

### Step 3



- Remove the original broken end by using a utility knife to cut 2-3 inches from the hose.
- ⓘ Place the hose on a flat surface such as a workbench, and perform a smooth, straight cut.

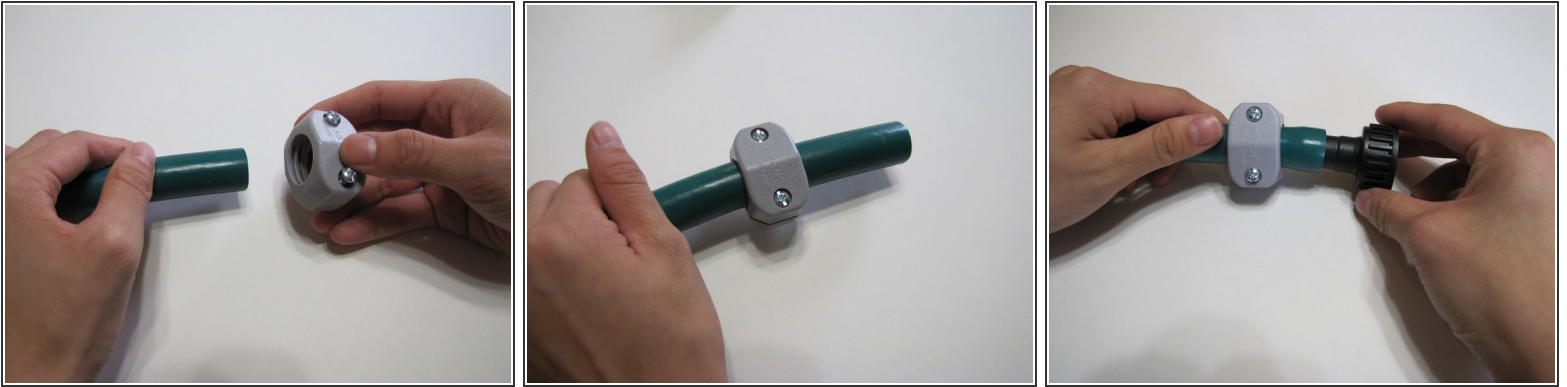
### Step 4




- Remove the fitting.

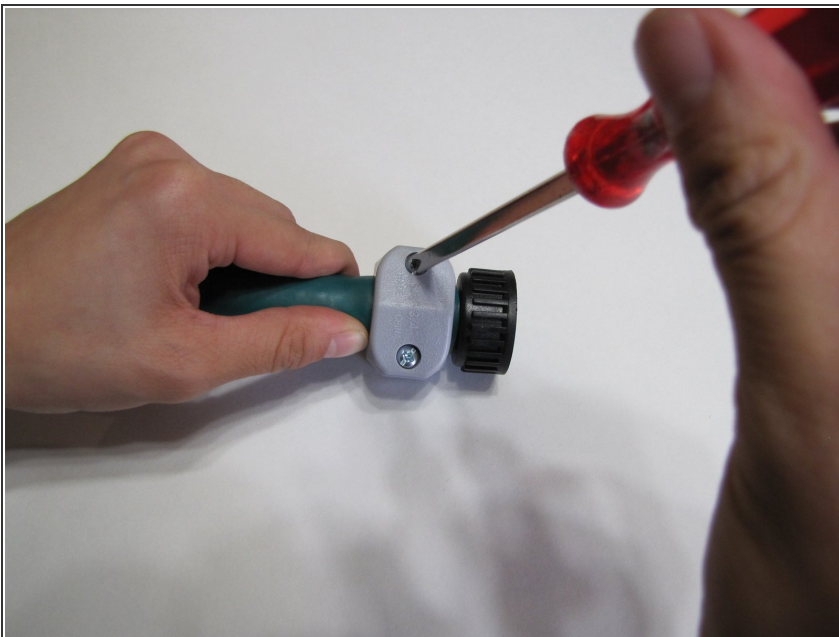


## Step 5



- Attach the new fitting.
  - Slide the clamp onto the hose.
  - Insert the new fitting.
-  Soak the hose in warm water or let it sit in the sun to make it more pliable.

## Step 6



- Tighten the clamp with a screwdriver.

Test your new and improved hose by turning on the water and watching for leaks.