



# **Samsung Galaxy J3 Eclipse Display Assembly Replacement**

This guide will help you fix a broken or...

Written By: Chandler Casey



# INTRODUCTION

This guide will help you fix a broken or shattered screen on your Samsung J3 device.

## TOOLS:

[iFixit Opening Tool](#) (1)  
[Heat Gun](#) (1)  
[Tweezers](#) (1)


## PARTS:

[iFixit Adhesive Remover](#) (1)  
[Galaxy J3 \(2016\) Screen](#) (1)

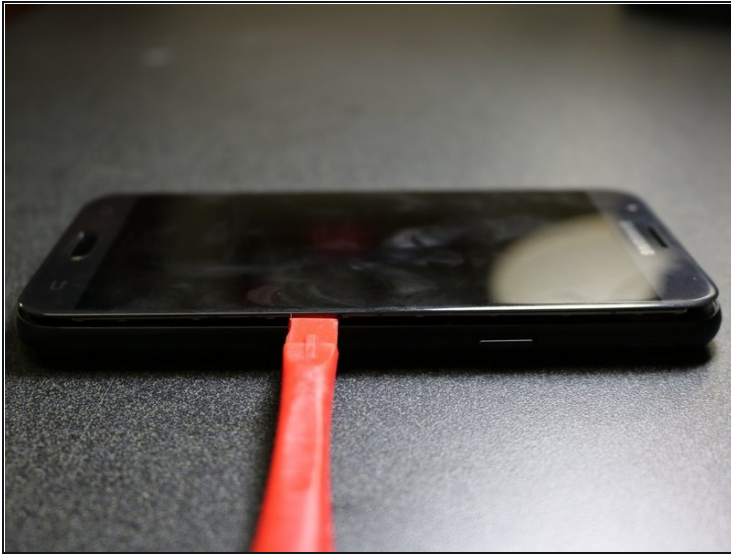
## Step 1 — Display Assembly



- Use a heat gun or hair dryer to heat up the front edges of the phone for about two minutes. Stay approximately six inches away from the screen to prevent phone damage.

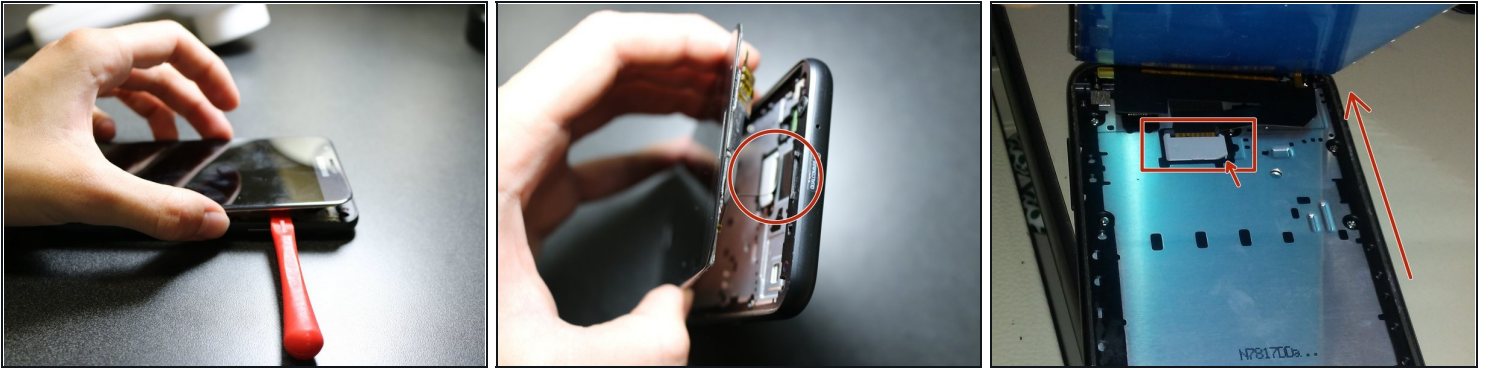
 Do not apply heat to any one edge of the phone for longer than a few seconds. Instead, use a continuous motion around the phone's edges.

## Step 2



- While the screen adhesive is still warm and flexible, insert a pry tool or [plastic card](#) between the glass display and the frame of the phone.
  - Slowly slide another pry tool around all the edges of the phone in order to break the adhesive's bond to the display.
- ⚠ When using the pry tool, do not use too much force or the phone's internals could be damaged.
- ⚠ Do not insert your tool more than 1cm into the top edge of the phone to avoid damaging the fragile cables.

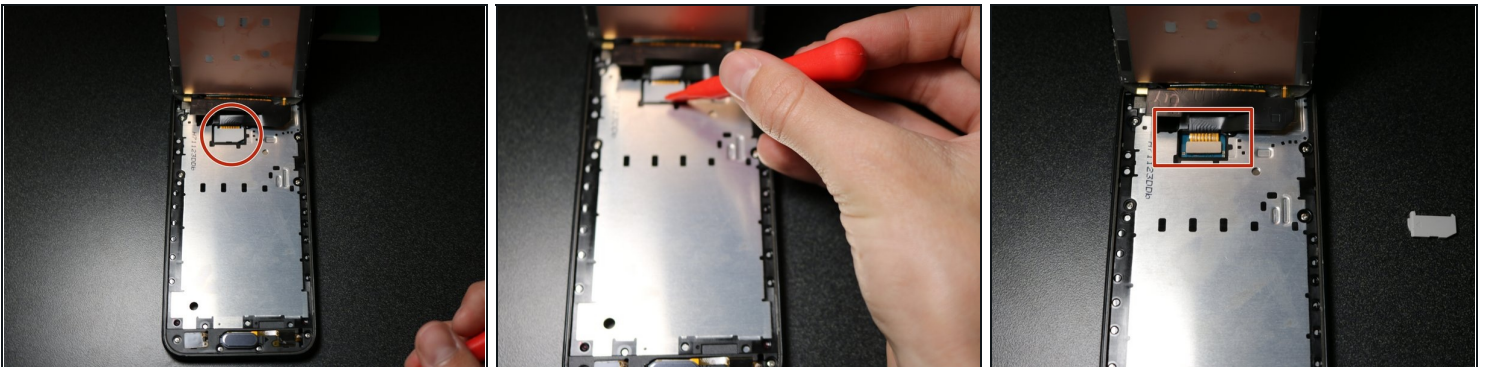
### Step 3



- Gently lift lower side and loosen all edges to hinge screen up from bottom.

⚠ Do not try to completely remove the display from the frame yet. Simply try to loosen up all the edges.

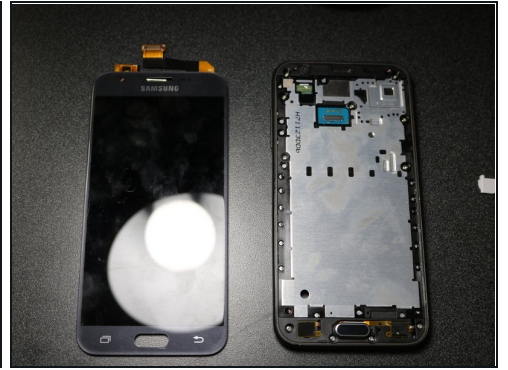
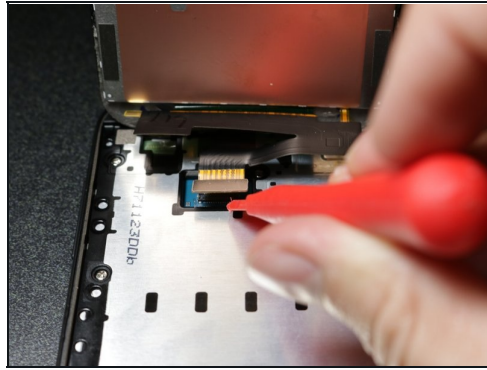
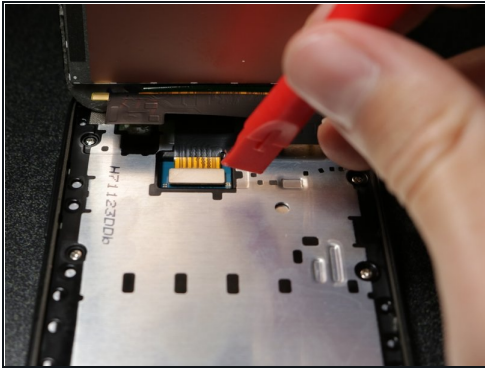
### Step 4



- Use your prying tool to slowly pry up on the **bottom right corner** of the white cable guard, exposing a thin ribbon cable connector.



## Step 5



- Pry up the ribbon cable connector revealed from under the cable guard and remove the display from the device.
- Clean the residue from the phone edges before re-assembling phone with new screen.

---

To reassemble your device, connect all cables, apply fresh screen adhesive and follow these instructions in reverse order.