



HP 17-x027ds Wifi Card Replacement

How to replace the wireless card of an HP 17-x027ds.

Written By: Tyrin



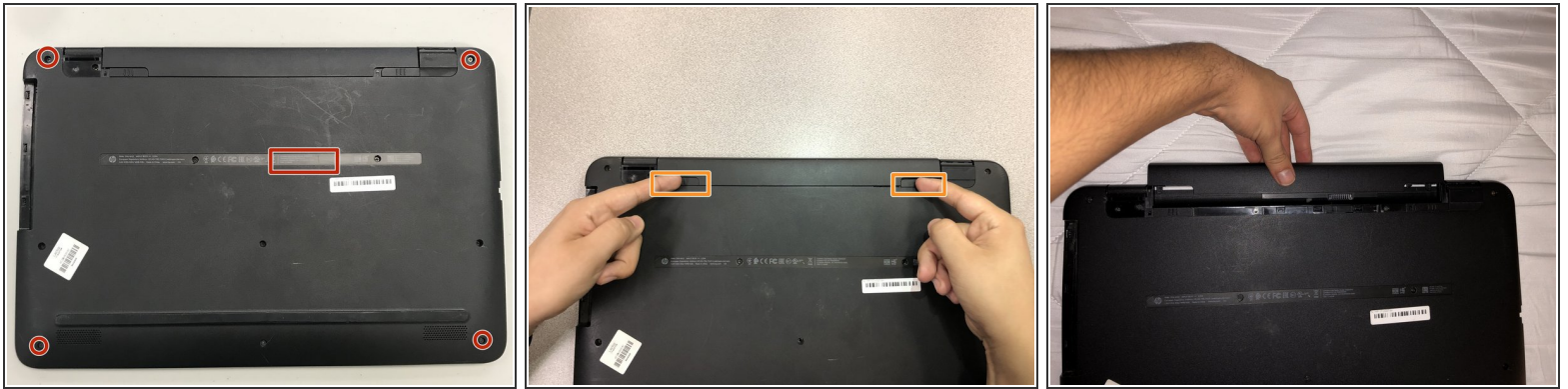
INTRODUCTION

This guide will detail how to replace the wireless card of the HP 17-x027ds. The wireless card should be replaced if you are having trouble connecting to wireless networks and have already troubleshot the wireless network itself.

TOOLS:

- [Metal Spudger](#) (1)
 - [JIS #00 Screwdriver](#) (1)
-

Step 1 — WiFi Card



- Flip the laptop so you can see the serial number and the four 7mm screws in all the corners.
- Click the hinges by pushing them inward, which are located at the top.
- Remove the battery by pulling it out.

Step 2



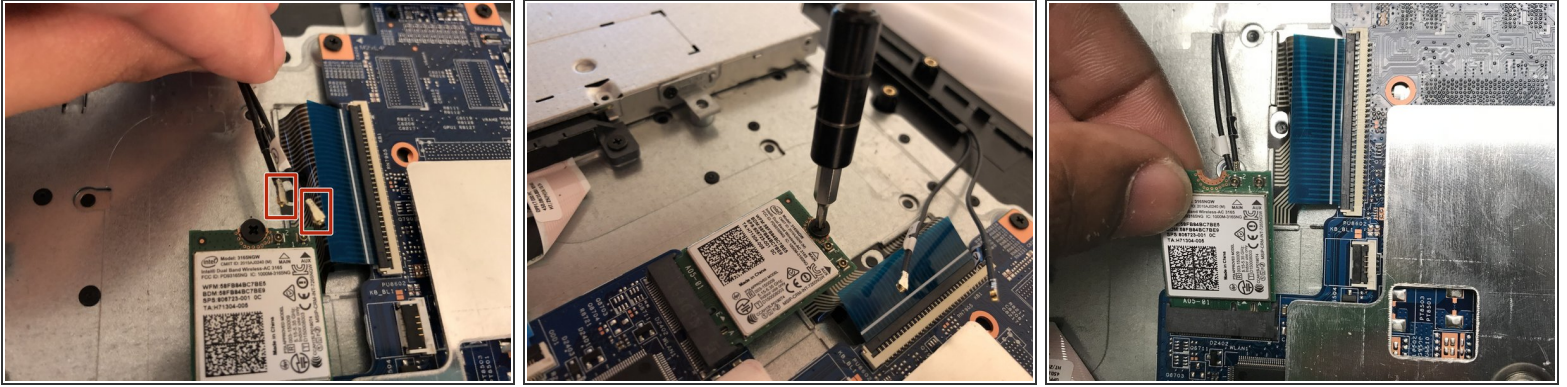
- Remove the 2 pieces of black tape that are each covering a 7mm screw at the top corners of the laptop.
- ☑ When removing the 2 black pieces of tape, keep the tape so you can place it back on the laptop again when reassembling.
- Remove the fourteen 7mm screws with a JIS #00 screwdriver.

Step 3



- Lift the bottom cover of the laptop with a metal spudger by wedging the sides first and going all around.
- ⓘ The cover is difficult to lift, so use extreme force.

Step 4



- Carefully pull the two cables attached to the CPU.
- ☑ They are labeled 1 and 2. When putting the cables back, make sure to put them in the correct section.
- Remove the screw holding down the CPU with the same screwdriver tip as before.
- Gently pull on the CPU to remove it.

To reassemble your device, follow these instructions in reverse order.