



Toshiba Satellite C55-B5302 Hard Drive Replacement

This guide will help you replace the hard drive on the Toshiba Satellite C55-B5302 laptop.

Written By: Jeff Sims



INTRODUCTION

Before starting this process you will need to remove the battery and take off the cover. It's easier than it looks and only requires a Phillips #0 screwdriver and a plastic opening tool. Expect to take about 10 minutes for this process from start to finish.



TOOLS:

- [Phillips #0 Screwdriver](#) (1)
 - [iFixit Opening Tools](#) (1)
-

Step 1 — Battery



- Flip laptop upside down so you can see the screws.

Step 2



- Using the Phillips #0 screwdriver, remove the two 7 mm screws from the back casing.

Step 3



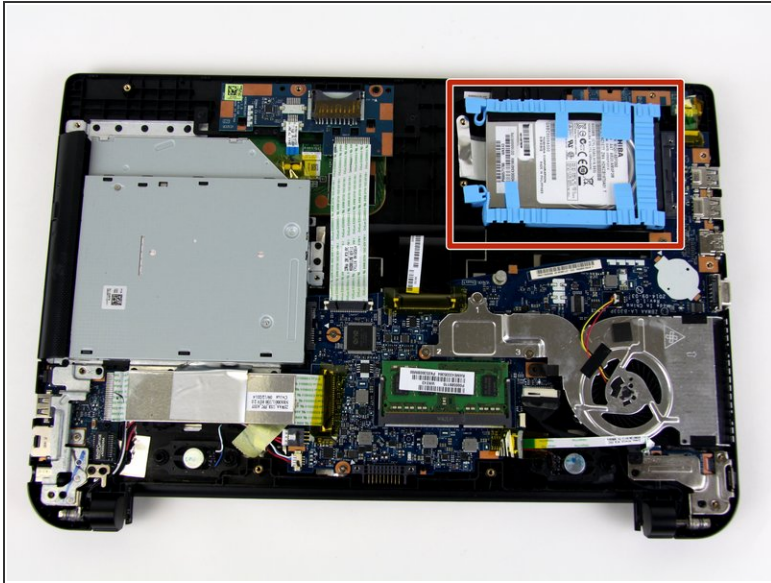
- Pull the battery from the back of the laptop for removal from the laptop.

Step 4 — Hard Drive



- Remove the remaining 7 mm screws on the back panel of the laptop with a Phillips #0 screwdriver.
- Use the plastic opening tool to pry up a corner of the back panel and continue to pop the back panel off.
- ⓘ Expect to hear popping as you pull the back panel off.

Step 5



- The hard drive is held in place with a soft, blue rubber retainer. The retainer can be disconnected by pulling up on the two tabs at the left side of the hard drive in these images.

Step 6



- Gently pull the hard drive away from the connection to remove it from the laptop.

To reassemble your device, follow these instructions in reverse order.

This document was generated on 2020-11-28 07:09:25 AM (MST).

