



Google Pixel Display Adhesive Installation

Use this guide to install a Google Pixel display assembly using a pre-cut adhesive sheet.

Written By: Taylor Dixon



INTRODUCTION

This repair guide was authored by the iFixit staff and hasn't been endorsed by Google. Learn more about our repair guides [here](#).

Use this guide to correctly apply replacement adhesive to your Pixel or Pixel XL display after a repair.

Some replacement displays do not come with an [earpiece speaker grille](#). If your replacement screen doesn't have one, be sure to transfer the grille from your old display to the new one before you install it. Alternatively, you can buy a new one [here](#).

Before you begin, you should have already removed your Pixel's display assembly and set it aside. Detailed instructions for each model can be found at the following links:

[Google Pixel](#)

[Google Pixel XL](#)



TOOLS:

- [Tweezers](#) (1)
- [Spudger](#) (1)
- [Q-Tips](#) (1)
- [Isopropyl Alcohol](#) (1)



PARTS:

- [Google Pixel Display Adhesive](#) (1)
- [Google Pixel XL Display Adhesive](#) (1)

Step 1 — Display Adhesive



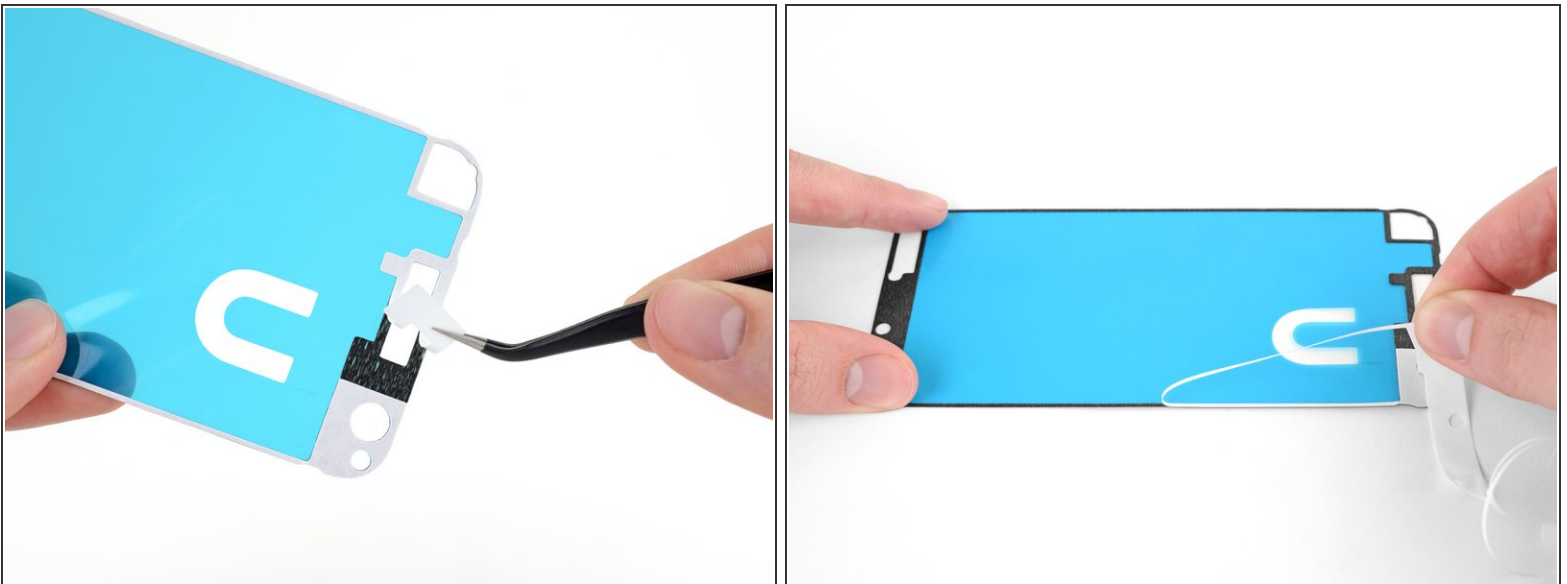
- Peel away and remove all the old display adhesive from the body of your phone.
 - Use the point of your spudger to scour away and remove any lingering adhesive.
 - ✦ Using metal tools can lead to scratching the glass!
 - ⓘ If you are reinstalling your existing display, remove all the old adhesive from that as well.
 - For best results, clean the area underneath the removed adhesive with 90% or greater isopropyl alcohol to prep the surface for the new adhesive.
- ⚠ While high-concentration isopropyl alcohol is generally safe for use with electronics, it can wear away the foam padding on the midframe. Be careful as you clean the narrow edges of the frame.**

Step 2



- The replacement adhesive should only be applied to the edges of the frame, but may come with the center filled in.
- To remove the unnecessary center section of the adhesive strip, carefully peel away the center portion of both the white (paper) and black (adhesive) layers, starting with the U-shaped cutout.

Step 3



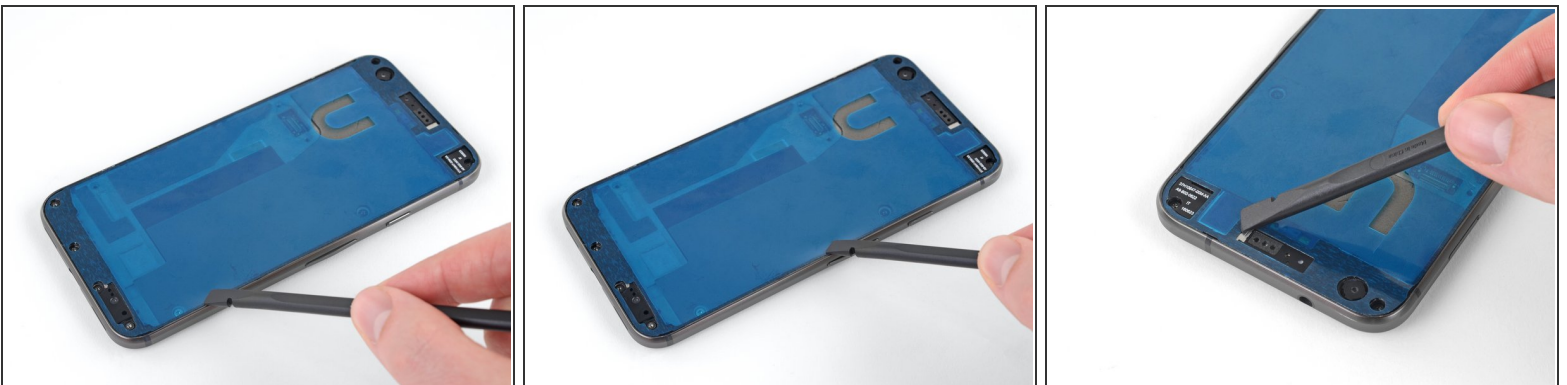
- Peel off and discard the remaining paper liner, exposing the adhesive underneath.

Step 4



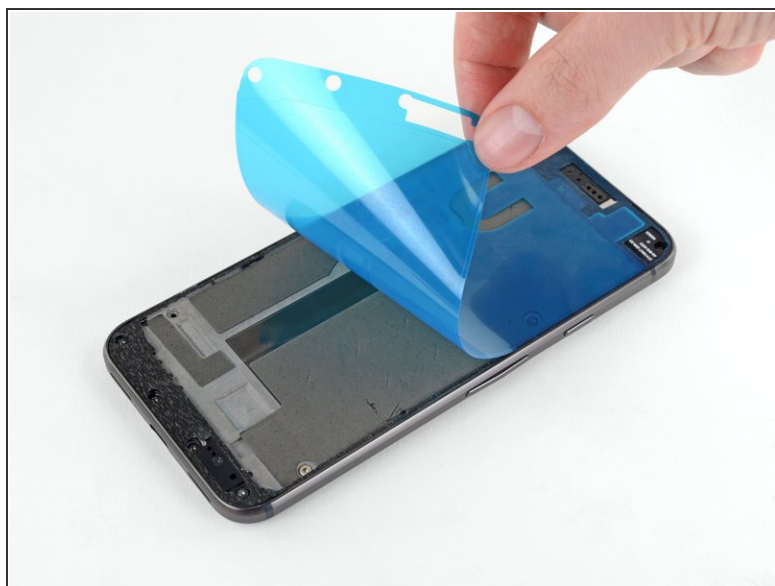
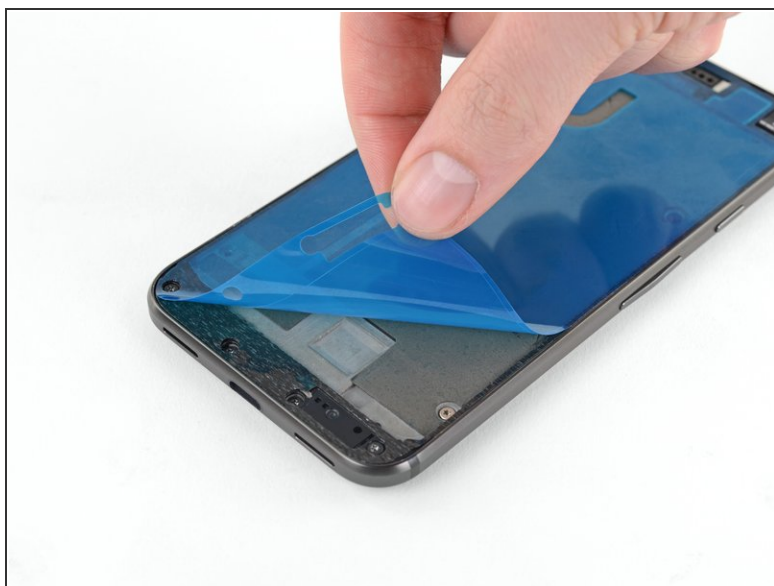
- Hold the adhesive sheet with the exposed adhesive facing down, and carefully align it into the lower edge of the phone.
⚠ Make sure the adhesive sheet is oriented correctly, with the rectangular cutout for the earpiece speaker at the top.
- When it's correctly aligned, lower the rest of the adhesive sheet into the phone.

Step 5



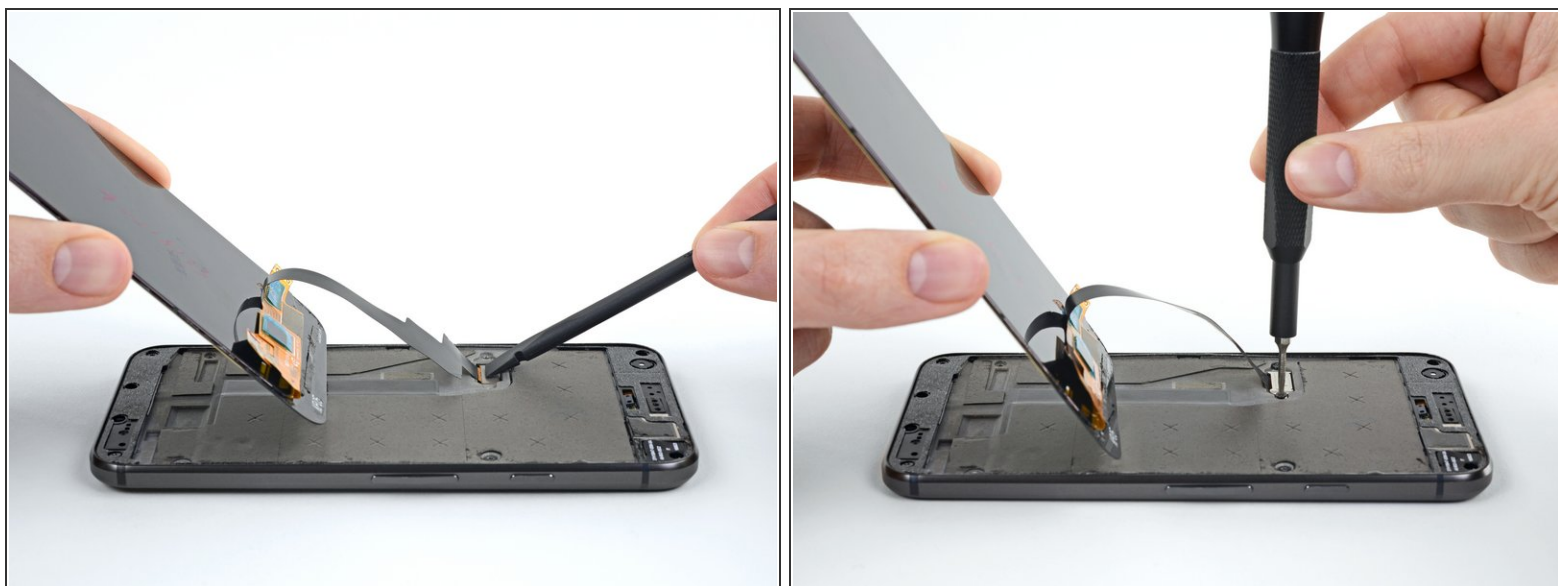
- Firmly press the adhesive into place.
(i) You can use the flat end of a spudger to press along the edges and other hard-to-reach areas.

Step 6



- Peel off and discard the plastic liner, exposing the display adhesive.

Step 7



i Once the new adhesive is exposed, do your best not to touch it—either with your hand, or the display. If you can, try to hold the display up and away from the rest of the phone (as shown in the step photo) while performing this step.

- Re-attach the display cable connector.
- Screw the connector bracket back in place.
- Power on your phone to make sure your repair was successful.

⚠ Do not remove or adjust the display cable while the phone is powered on.

Step 8



- Once you are sure the display is functioning properly, carefully align it with the chassis and firmly press it into place.
- ☑ To help the display adhesive bond more securely, heat the perimeter of the display and then place the phone face-up under a heavy stack of books for 30 minutes.

Take your e-waste to an [R2 or e-Stewards certified recycler](#).

Repair didn't go as planned? Check out our [Answers community](#) for troubleshooting help.