



# Dell Latitude E6520 WLAN Adaptor Card Replacement

This guide demonstrates a simple procedure to properly remove the WLAN Adapter Card from a Dell Latitude E6520.

Written By: Alec Weiss



---

## INTRODUCTION

The WLAN Adapter Card is what allows the computer to connect to Wi-Fi.

The WLAN Adapter Card is connected to the laptop by 2 J0 PH screws with a head size of 4.44 mm and a length of 3.67 mm.

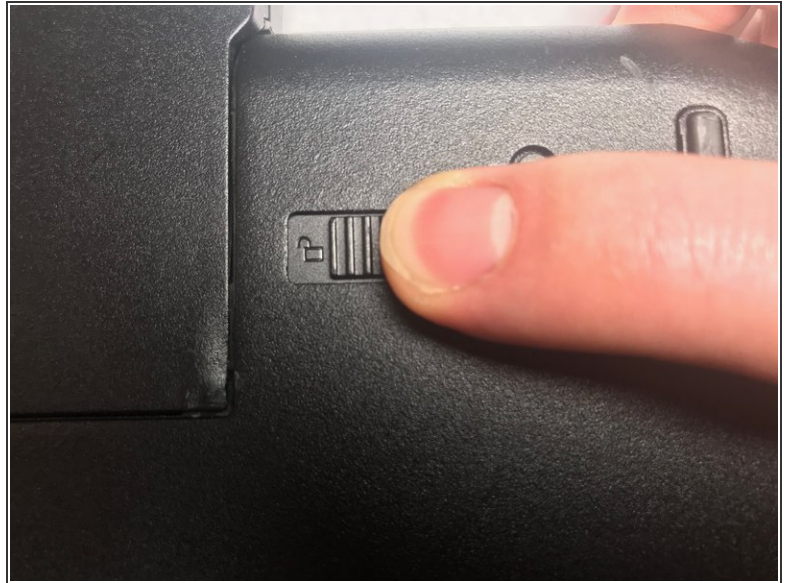
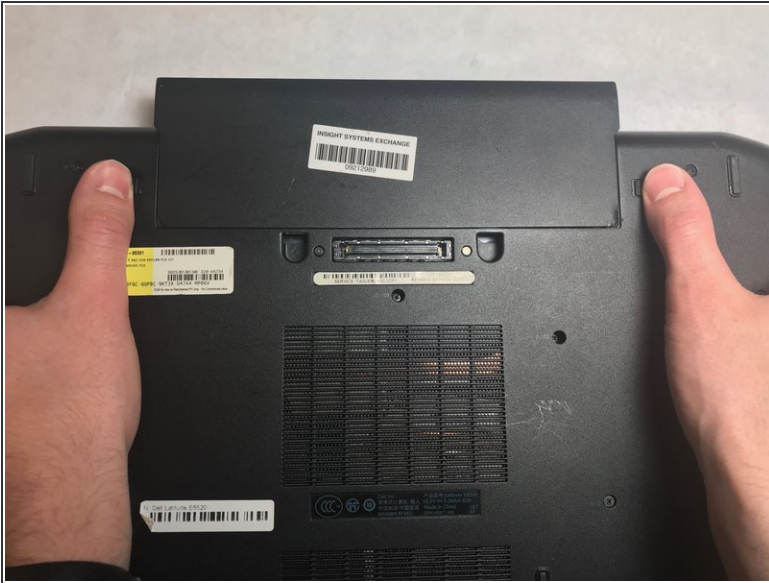


### TOOLS:

- [JIS #0 Screwdriver](#) (1)
-

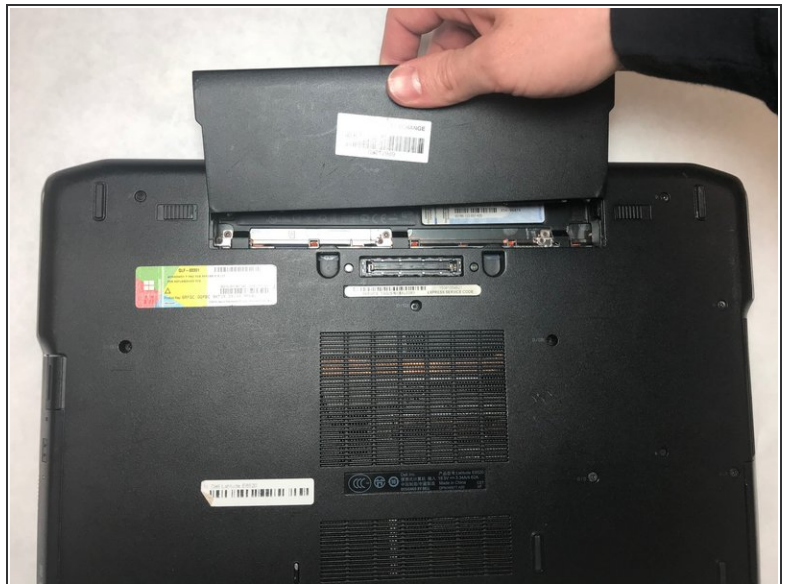
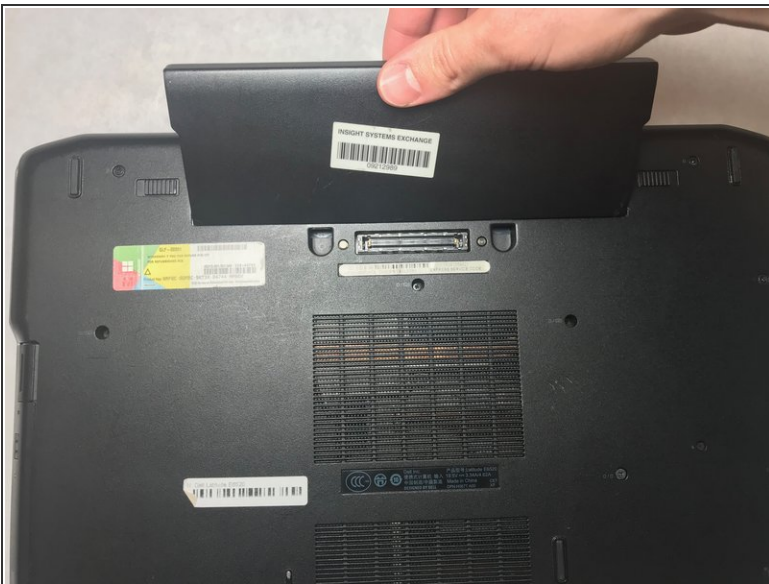


## Step 1 — Battery



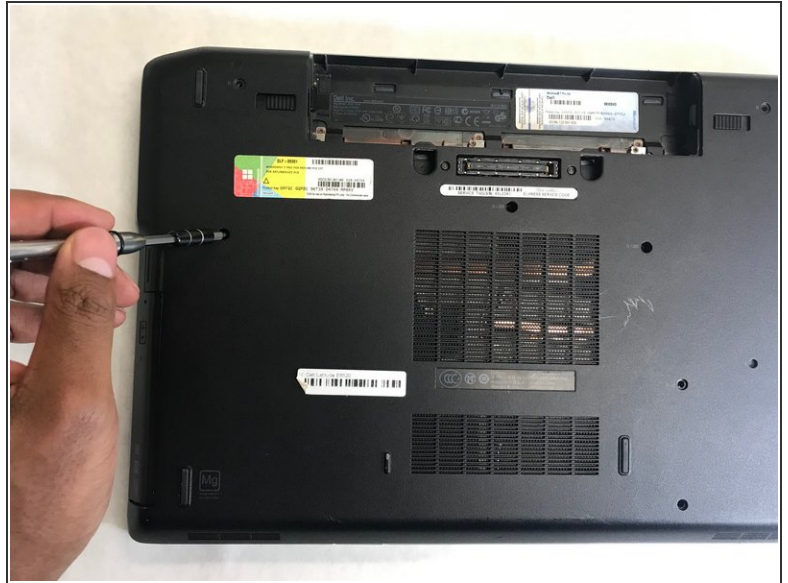
- With the laptop closed and the bottom side facing up, slide the two battery latches towards the sides of the laptop.
- ⓘ When the latches are unlocked, a small logo resembling an open padlock will become visible.

## Step 2



- Grasp the battery from the top and pull upward.

### Step 3 — Bottom Cover



- Remove the ten 8.6 mm JIS #0 screws.

### Step 4



- Place fingers underneath cover and pull off the cover.

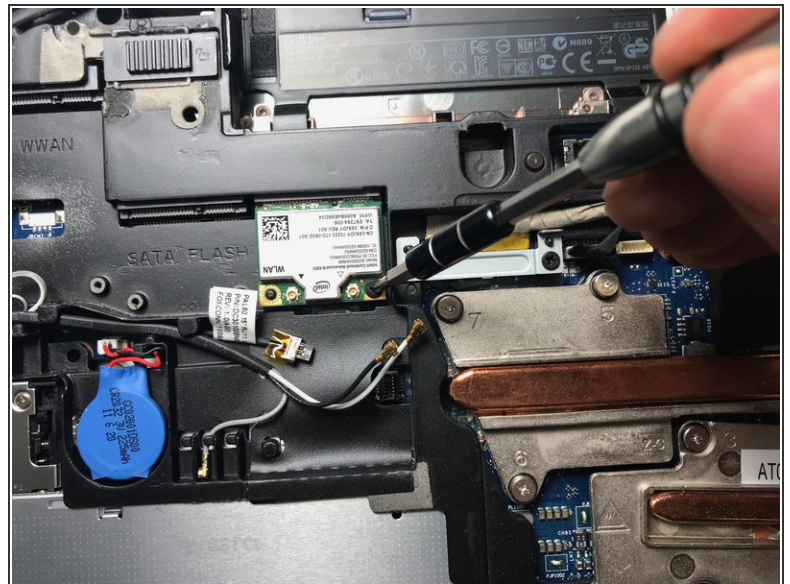


## Step 5 — WLAN Adapter Card



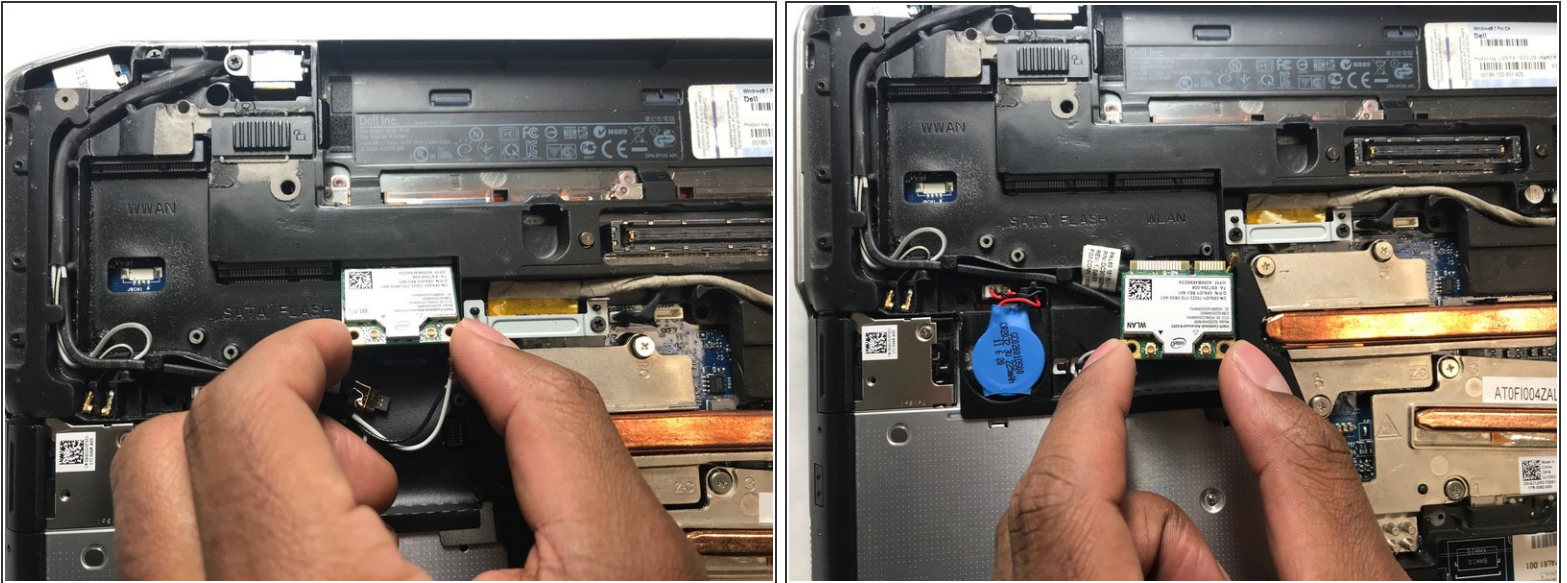
- Gently pull the two wires connected to the WLAN Adapter Card.

## Step 6



- Remove the two electrode connectors.
- Remove the single 3.67 mm JIS #0 screw that holds the WLAN Adapter Card to the laptop.
- ❗ The WLAN Adapter Card will pop up once the screws are taken out.

## Step 7



- Pull WLAN Adapter Card to remove it from the laptop.

To reassemble your device, follow these instructions in reverse order.