



Hover-1 Matrix Right Gyroscope Sensor Board Replacement

If the hoverboard is having a problem with...

Written By: Qingxi Liu



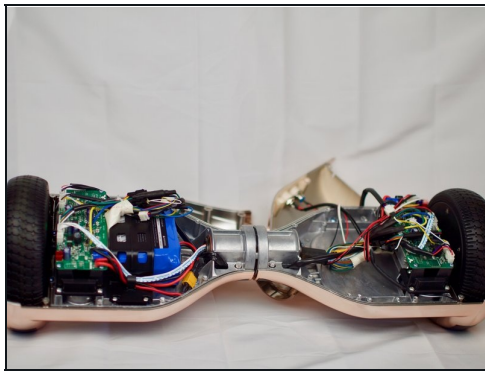
INTRODUCTION

If the hoverboard is having a problem with stabilizing then the Right Gyroscope Sensor Board might be malfunctioning and requires being replaced. By replacing the Right Gyroscope Sensor Board the hoverboard should be able to stabilize itself and function properly. There are no special skills, nor unusual steps for this fix.

TOOLS:

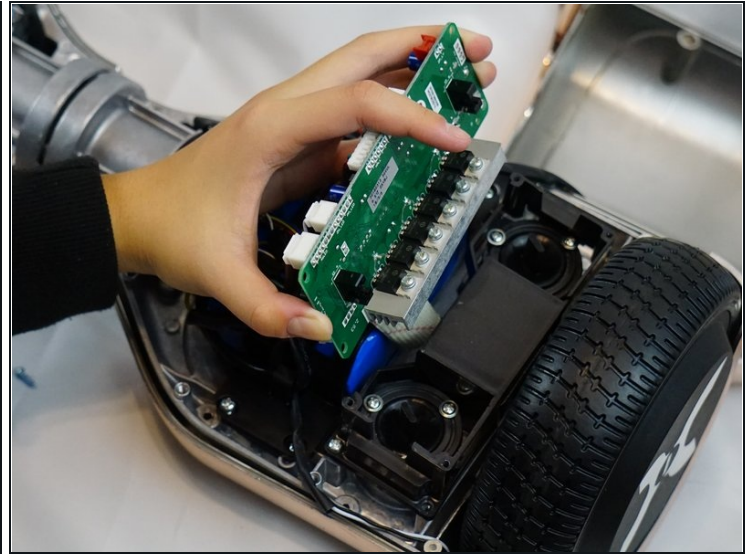
Phillips #1 Screwdriver (1)

Step 1 — Right Gyroscope Sensor Board



- Locate and use the screw driver and 54 bit as shown in figure 3. Use screw driver to remove screws on the back of the hover board as shown in figure 1. Remove the back shell as shown in figure 2.

Step 2



- Locate green electric boards at both ends of the hover board. These green boards are the gyroscopes. Use the screw driver to remove the screws from the corners of the green boards as shown in figure 1.

To reassemble your device, follow these instructions in reverse order.