



Huawei Mate 9 SIM/SD Card Tray Replacement

This guide will help you replace your SIM Card Tray in a situation where it breaks or is lost.

Written By: Rogelio Ramirez



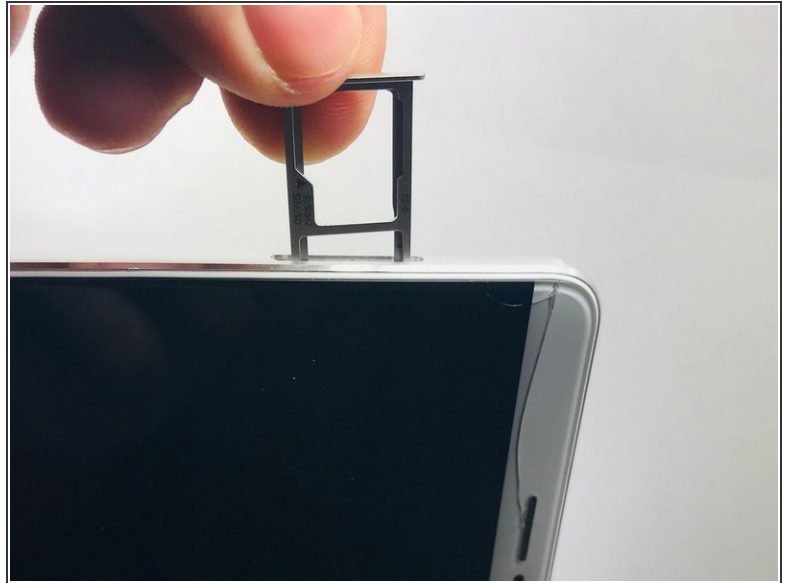
INTRODUCTION

Use this guide to help you replace a broken or malfunctioning SIM/SD Card Tray. Ensure that you have all the proper tools before starting.

TOOLS:

- [SIM Card Eject Tool](#) (1)
 - [Huawei Mate 9 Sim Card Tray](#) (1)
-

Step 1 — SIM/SD Card Tray



- Use SIM/SD Card tray removal tool to remove tray
- Remove SIM/SD Card tray and replace with new tray

To reassemble your device, follow these instructions in reverse order.