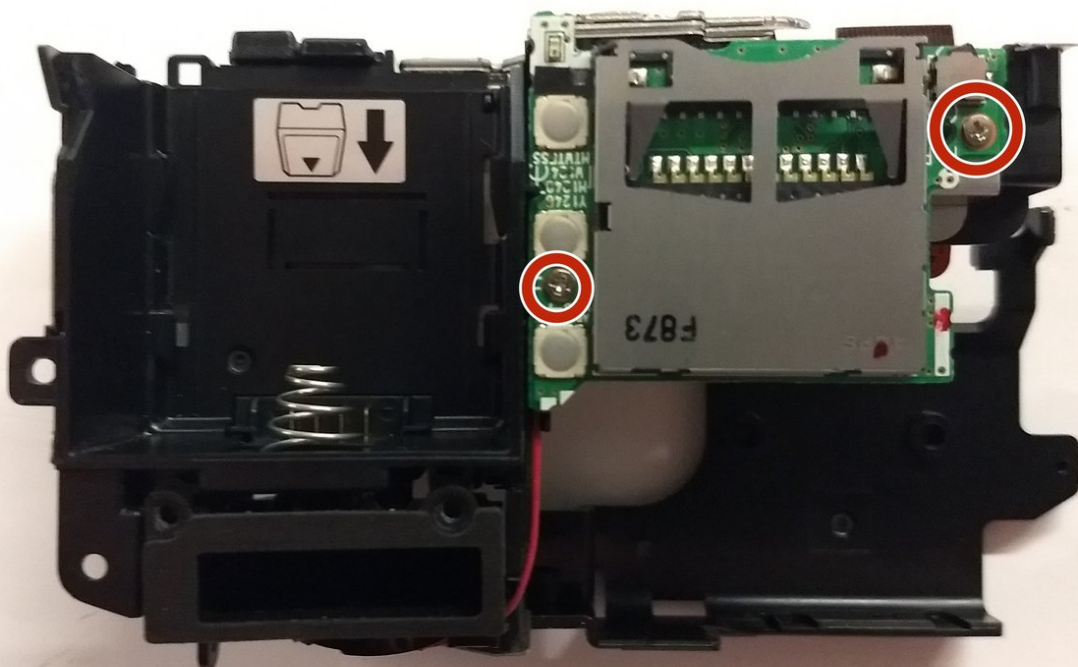




# Panasonic SDR-H40P SD Card slot Replacement

This guid will show you how to remove the SD card slot from the Panasonic SDR-H40P.

Written By: Andrew Waldschmidt



---

## INTRODUCTION

Use this guide to replace the SD card slot in your camcorder.






### TOOLS:

- [Phillips #00 Screwdriver](#) (1)
  - [Metal Spudger](#) (1)
-

## Step 1 — Hard drive



 Remove battery first.

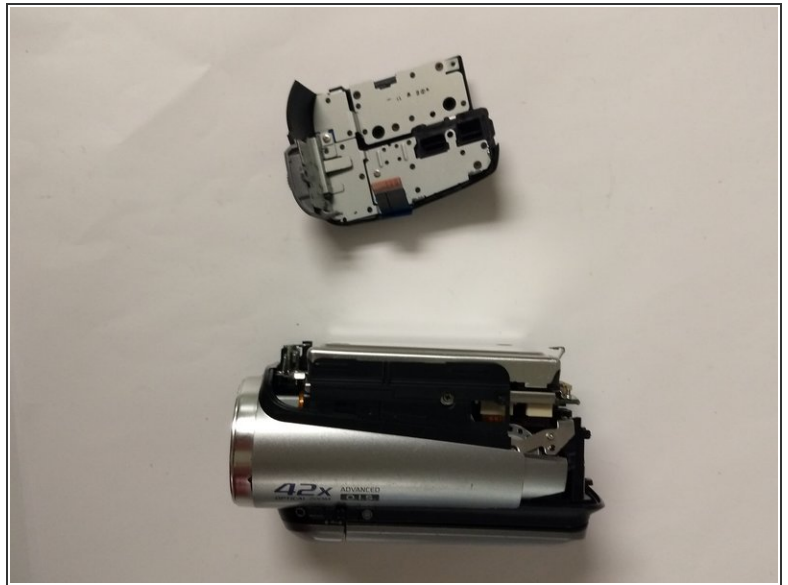
- Remove right side shell. There are two screws that are right behind the strap that also need to be removed.
-  Prepare to keep track of many tiny screws.
-  Keep track of where all your screws unscrew from. Some of these screws have a slightly different size compared to others and will get stuck inside the holes when putting it back together.

## Step 2




- Remove indicated screws to release back panel.

## Step 3

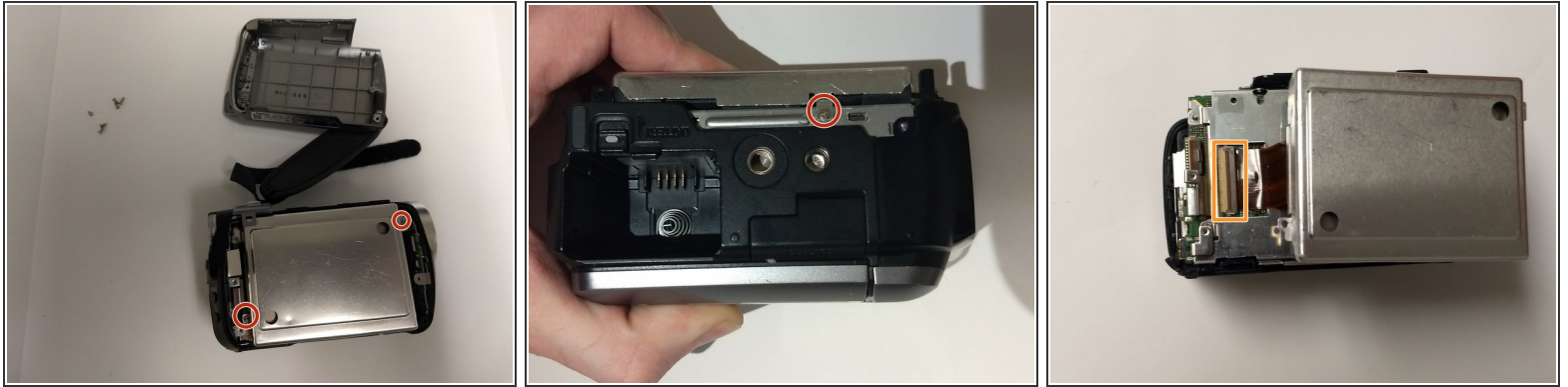


 This is a continuation of Step 2.

- Remove the last screw.
- To remove the panel you simply pull it back.

 There is a ribbon cable attached the the motherboard. Be sure to pull the panel back slowly, and detach the ribbon cable.

## Step 4



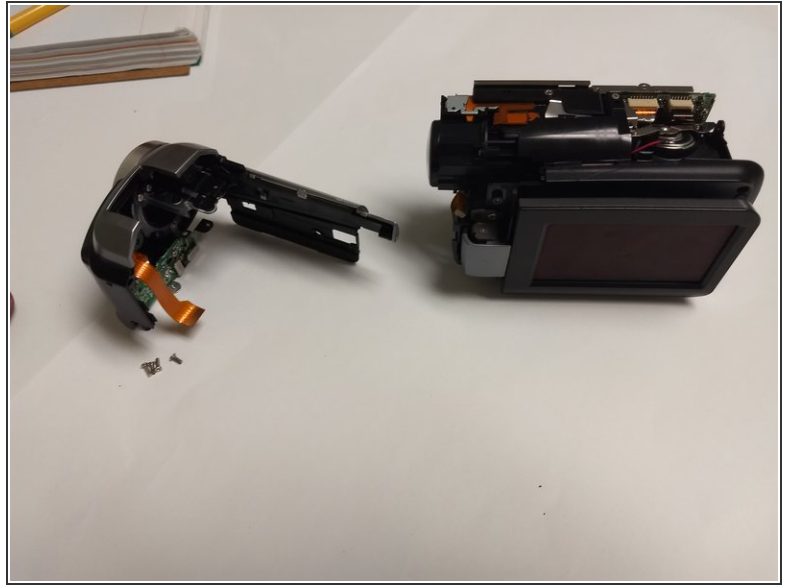
- Remove the three screws highlighted in the pictures shown.

⚠ Do not use force on the hard drive.

- To avoid damaging the device, slowly pick up the hard drive to reveal an orange ribbon cable attached to the motherboard pull back on the dark brown tab and carefully pull out the ribbon cable . Then you may proceed with removing the hard drive.

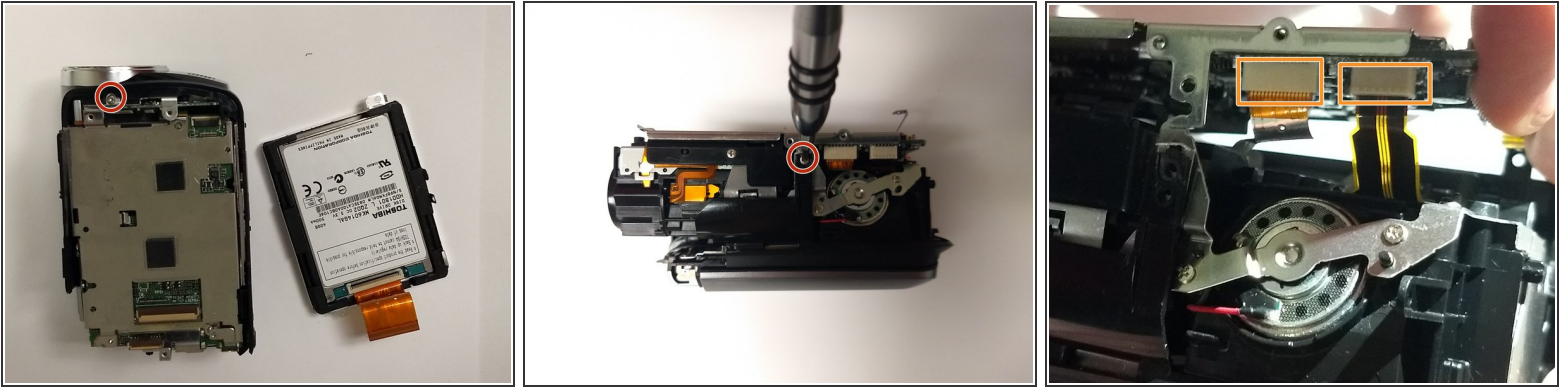


## Step 5 — Motherboard



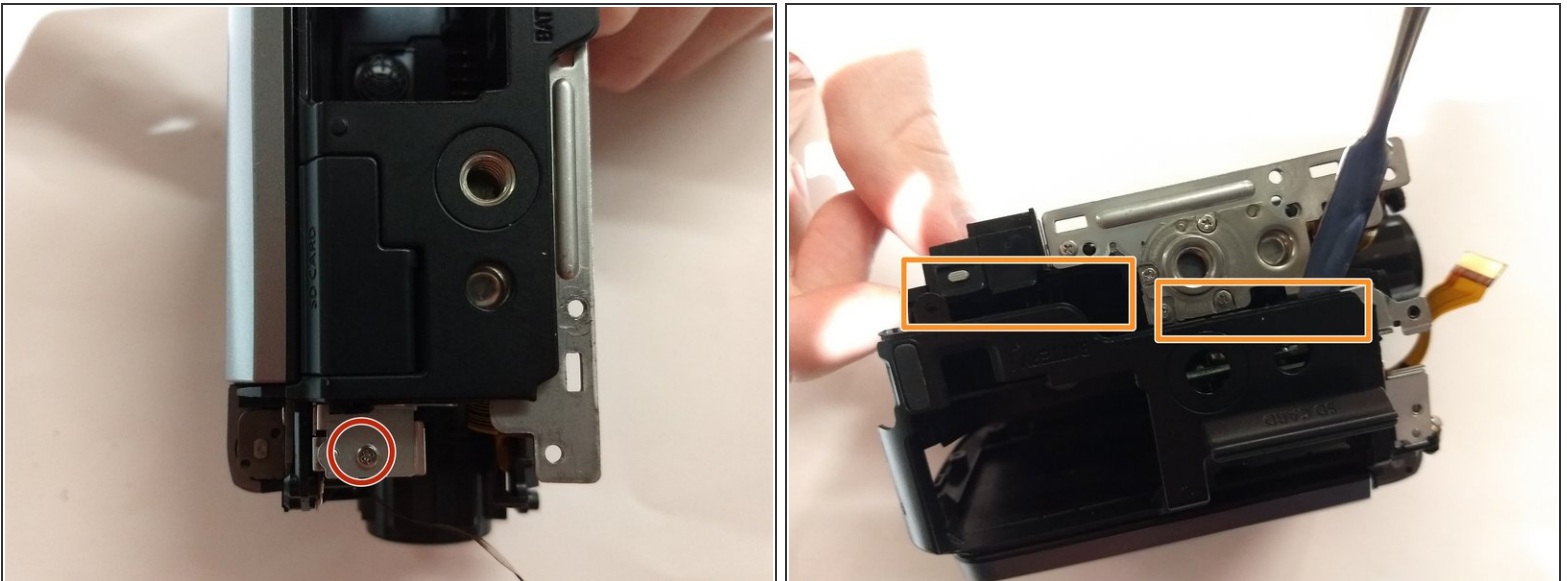
- Remove the screws circled.
  - Pull front section away from the rest of the camera to remove it.
- ⚠ Front panel has a ribbon cable that's attached to the motherboard. Detach the motherboard end when pulling off the front panel.

## Step 6



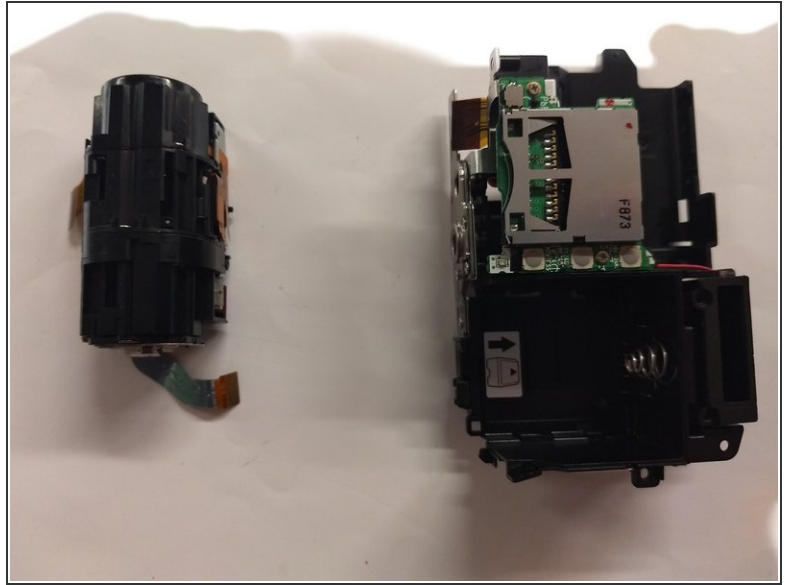
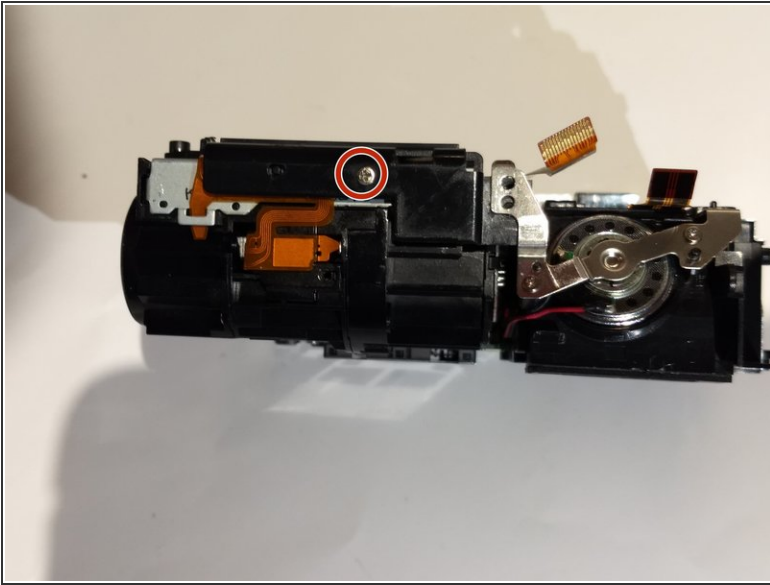
- Remove the screws circled.
  - Carefully pull the motherboard away from the the rest of the camera.
  - Detach the ribbon cables from the motherboard.
- ⚠ Be careful with the ribbon cables they applying too much force could damage them.

## Step 7 — Camera assembly



- Remove screw circled.
- Use a spatula to pull up the black shell and pull it away from the rest of the camera

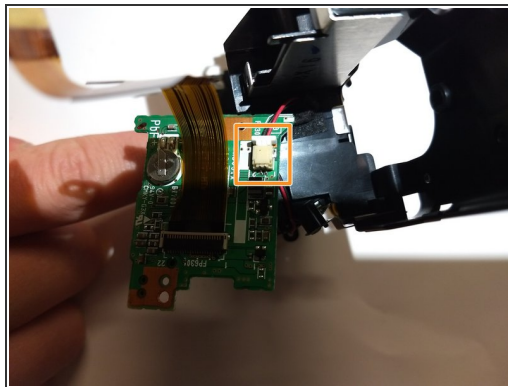
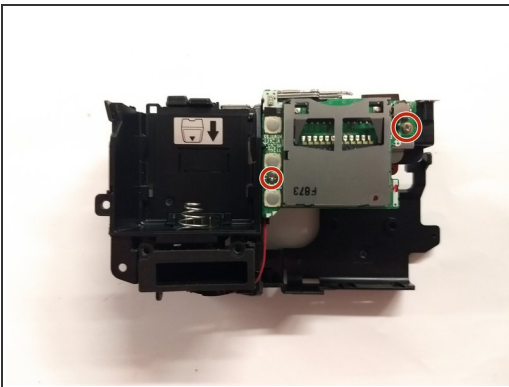
## Step 8



- Remove the screw circled.

**i** Feed the ribbon cable when pulling out the lens. There is a hole where the cable goes through. Do this before moving the lens.

## Step 9 — SD Card slot



- Remove the two screws using a Phillips #00 screwdriver.
- Use tweezers to slowly pull out the cable.
- ⚠ Pulling directly on the cord could lead to damaging the wire.



To reassemble your device, follow these instructions in reverse order.