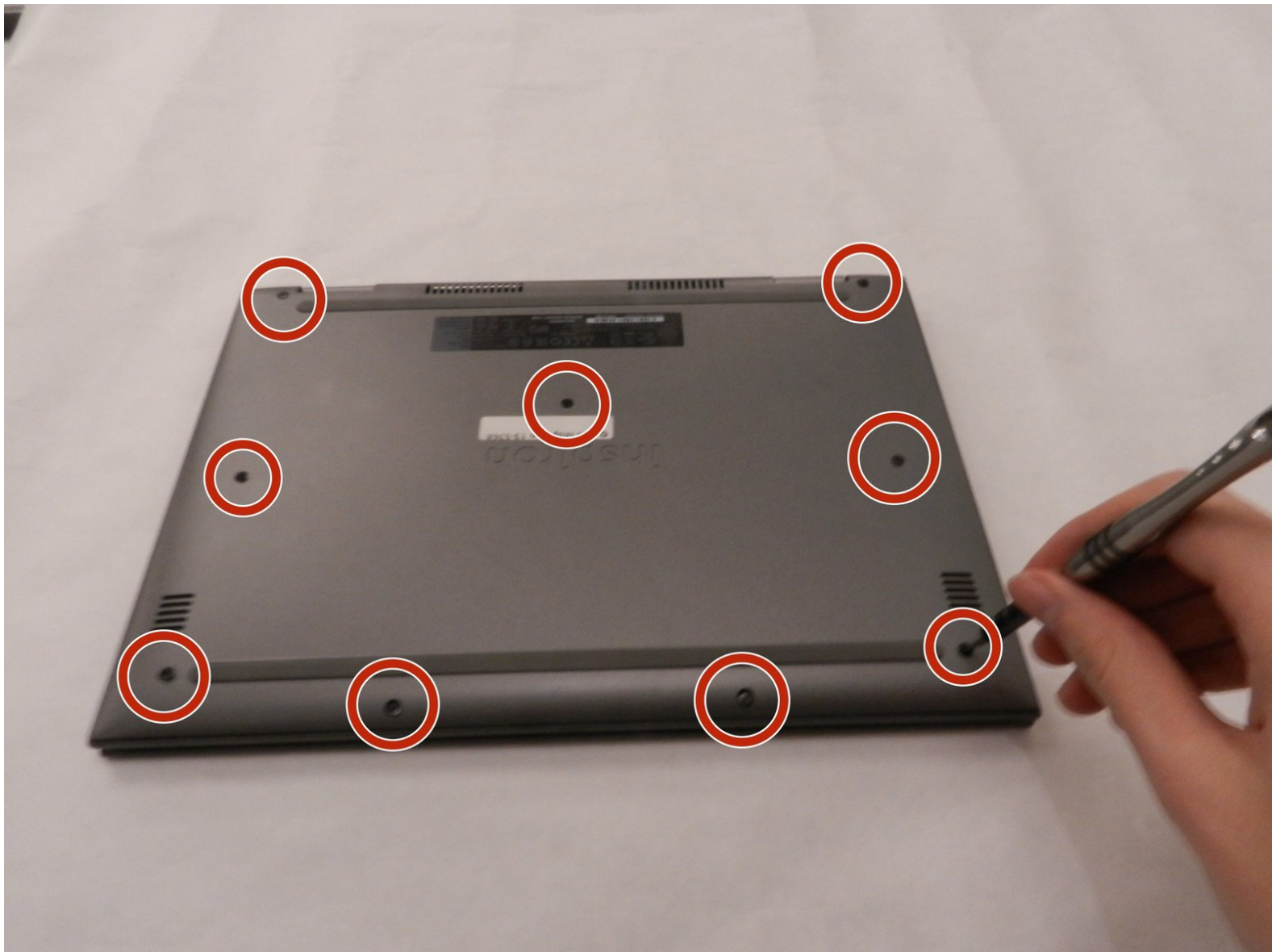




# Dell Inspiron 13-5368 Wifi Adapter Replacement

This guide is made to walk through the steps of removing and replacing the Network Adapter Card or Wifi Adapter card.

Written By: Raj Dhavalikar



---

## INTRODUCTION

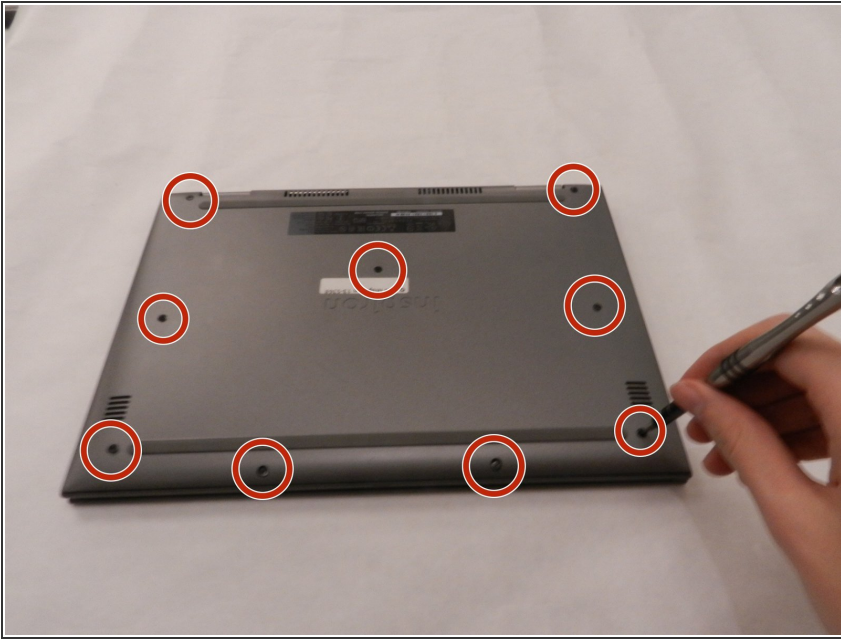
Is your computer experiencing trouble with connecting to the internet? Consider using this guide to replace the network adapter card in your laptop.



### TOOLS:

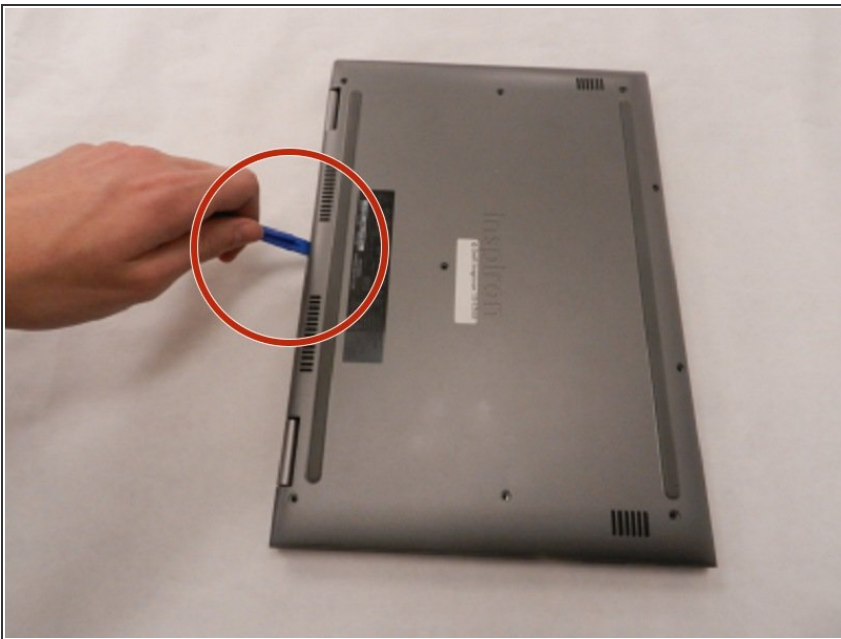
- [Phillips #0 Screwdriver](#) (1)
  - [iFixit Opening Tools](#) (1)
-

## Step 1 — Wifi Adapter



- Use a Phillips #0 screwdriver to remove the 9.6 mm screws securing the back plate of the laptop.

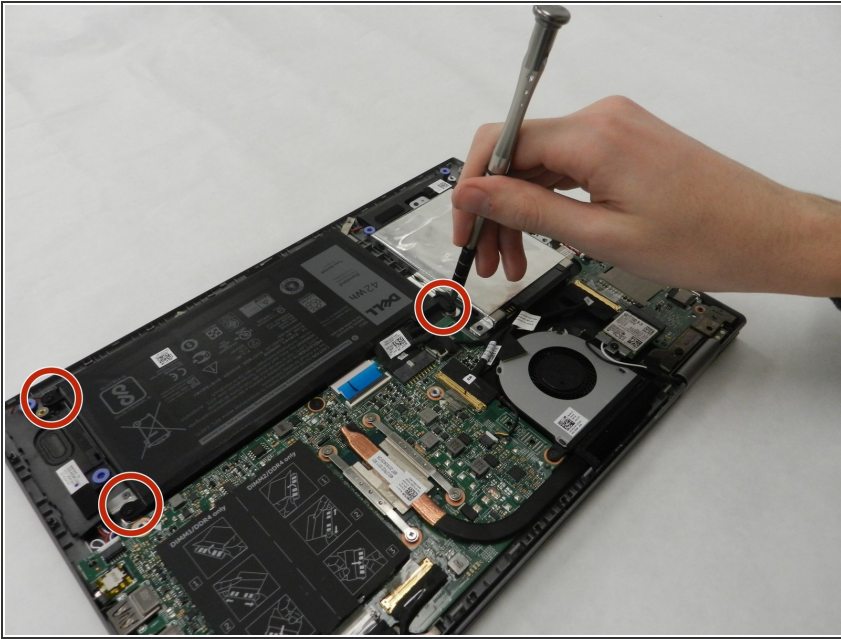
## Step 2



- Use a prying tool to remove the back plate.

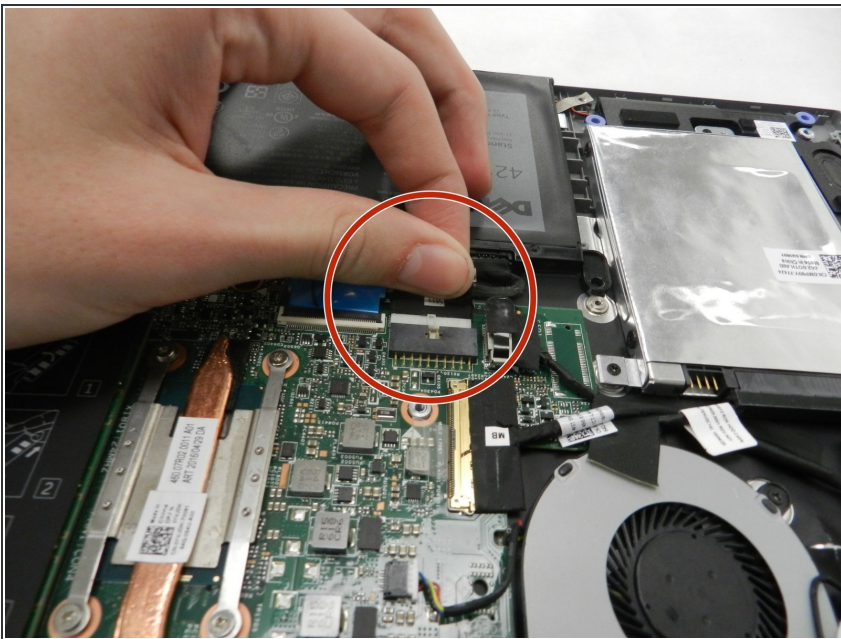


### Step 3



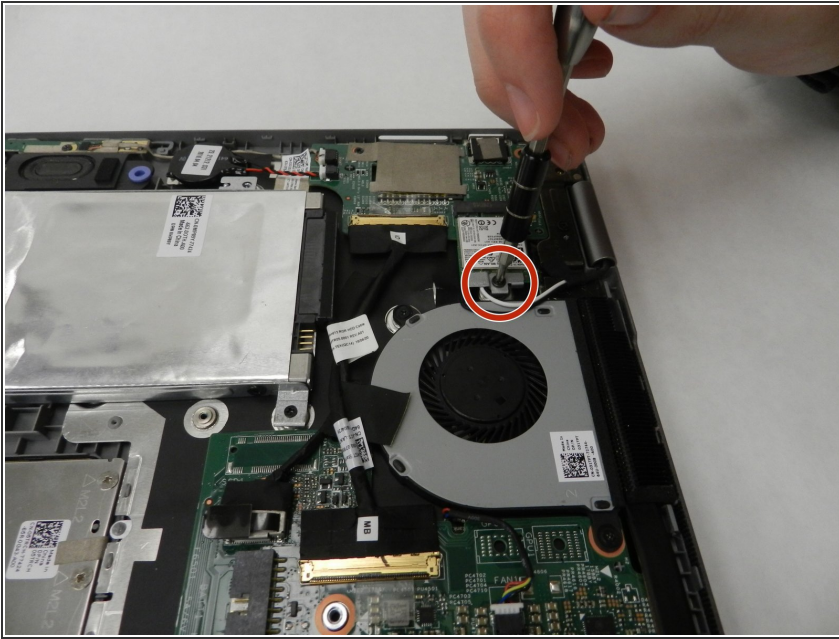
- Use a Phillips #0 screwdriver to remove the three 3 mm screws holding the battery in place.

### Step 4



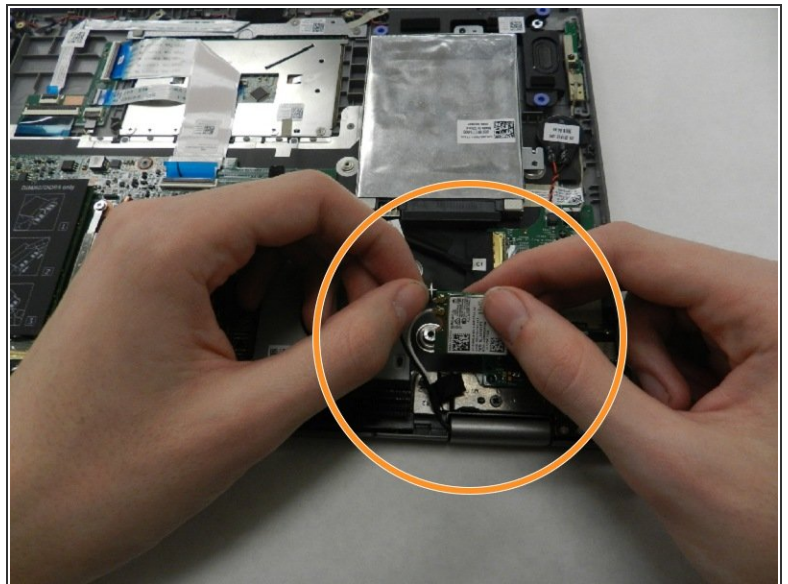
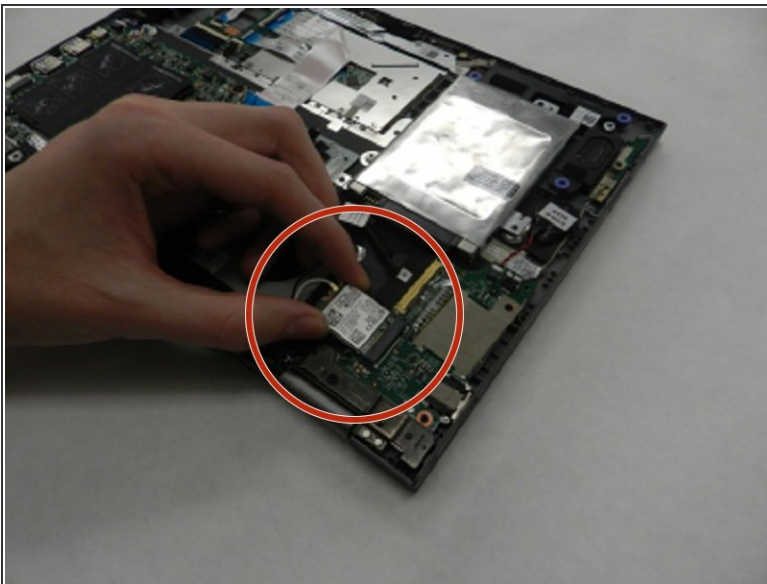
- Disconnect the cable connecting the battery to the motherboard, and then remove the battery

## Step 5



- Use a Phillips #0 screwdriver to remove the 3mm screw and the metal bracket that holds the network adapter card in place.

## Step 6



- Pull out the network card.
- To completely remove the network card, disconnect the two cords (white and black) from the adapter card. White on 1 and Black on 2.

To reassemble your device, follow these instructions in reverse order.