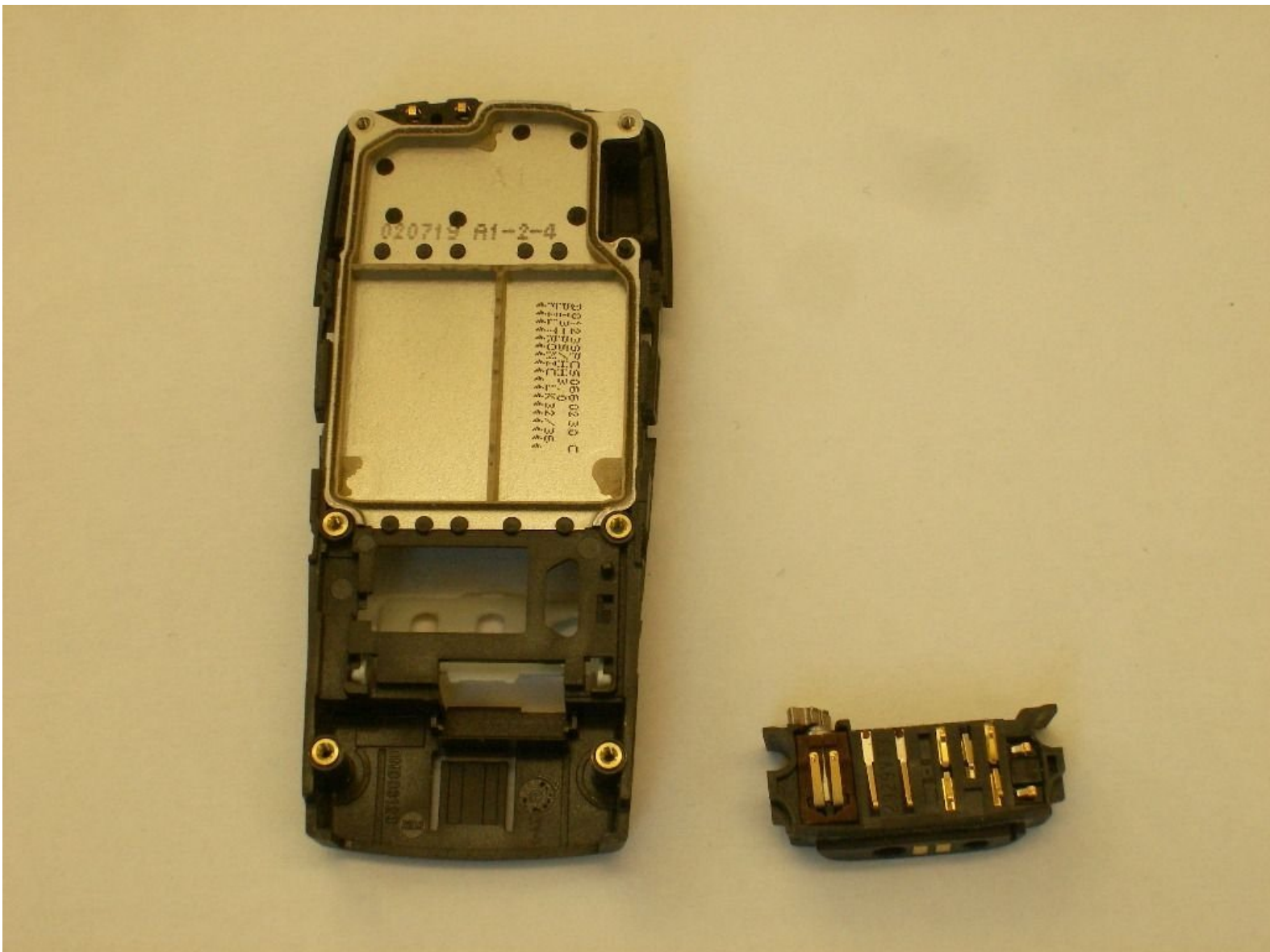




Nokia 8390 Charging Port Replacement

This guide shows users how to disassemble the charge port.

Written By: Clinton



INTRODUCTION

This guide shows you how to remove the charge port so that you can be sure it is functional or replace it.



TOOLS:

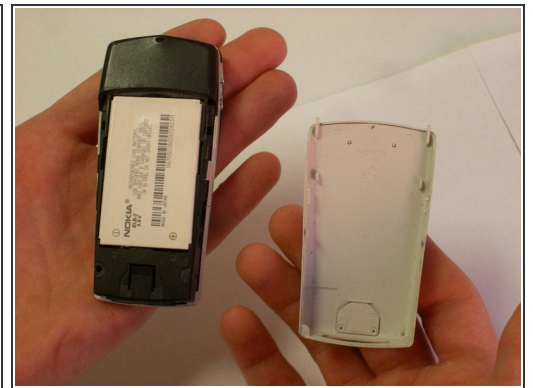
- [T6 Torx Screwdriver](#) (1)
-

Step 1 — Back Cover



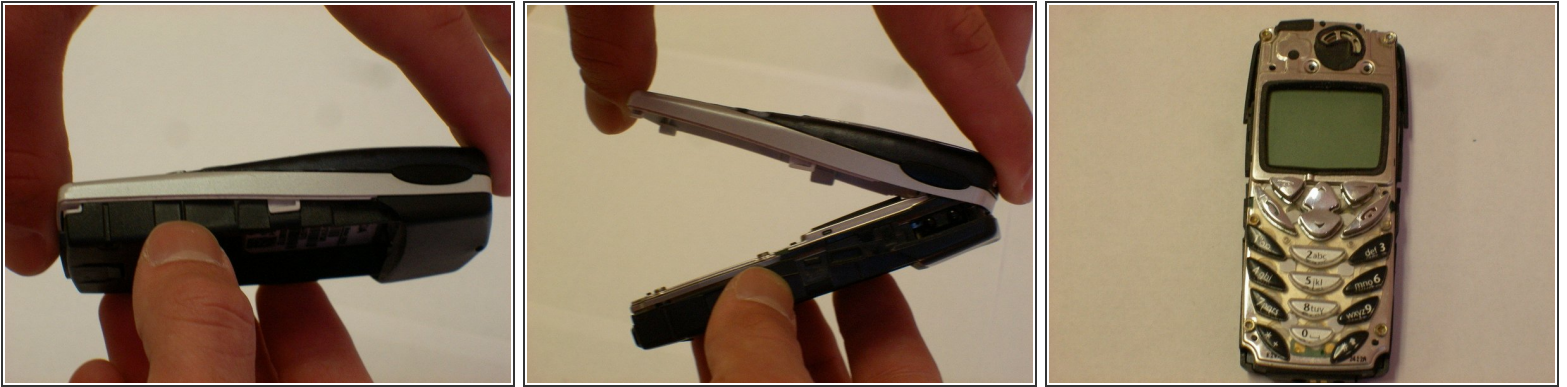
- Locate the button on the bottom of the back cover.

Step 2



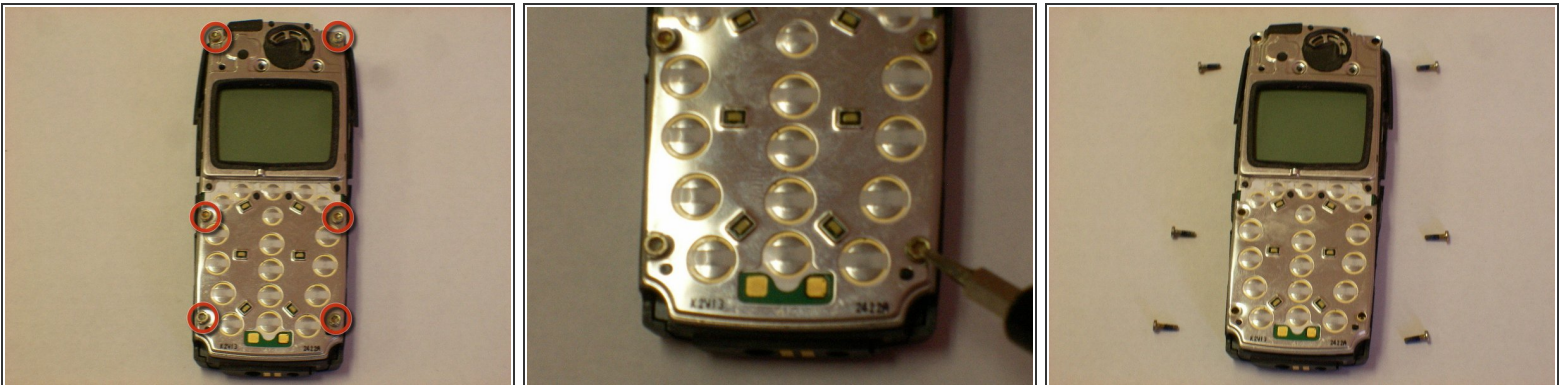
- Depress the button with your finger.
- While the button is depressed, slide the back cover off of the phone.

Step 3 — Outer Case



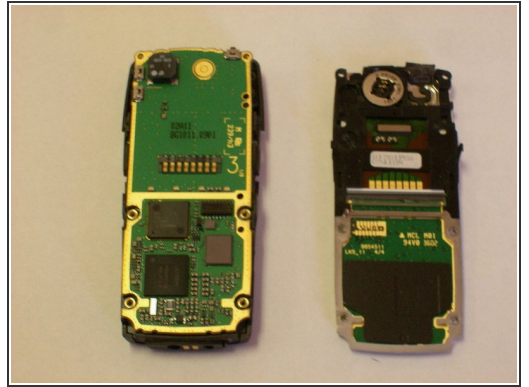
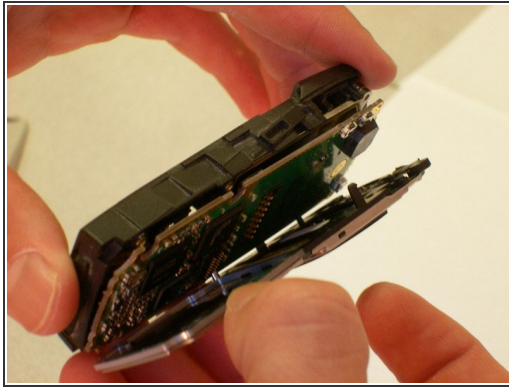
- Grasp the top and bottom of the front cover.
- Grasp the phone body with your other hand.
- Lightly pull the casing off of the phone.

Step 4 — Motherboard



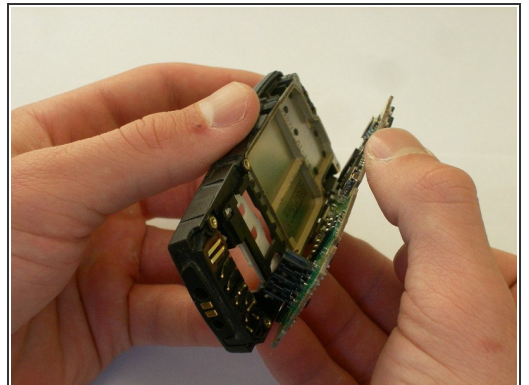
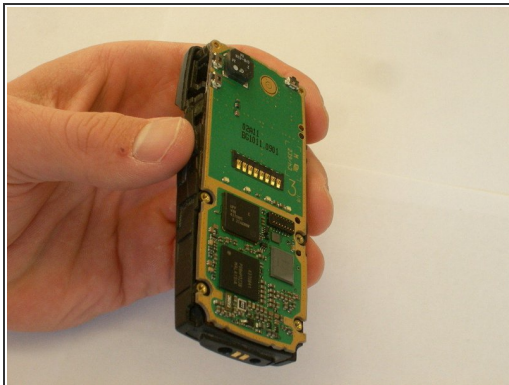
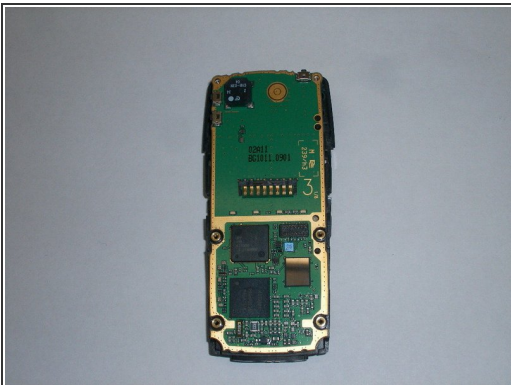
- Locate the six star-shaped screws on the phone.
- ⓘ Note: There are two on the bottom end, two in the middle, and two on the top end.
- Remove these screws using the screwdriver.

Step 5



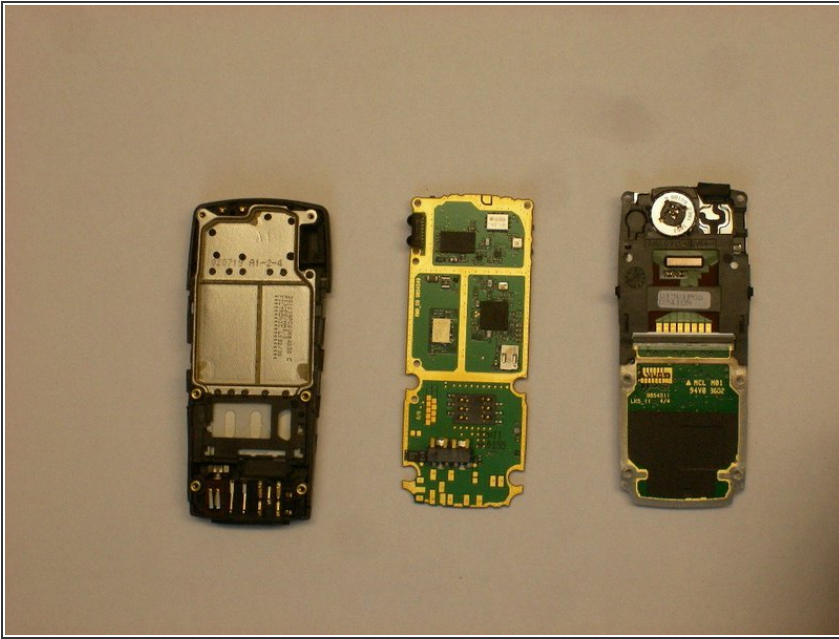
- Grab the top and bottom of the phone casing.
- Carefully pull the motherboard apart from the bottom casing.
- The circuit board should be divided into two parts.

Step 6



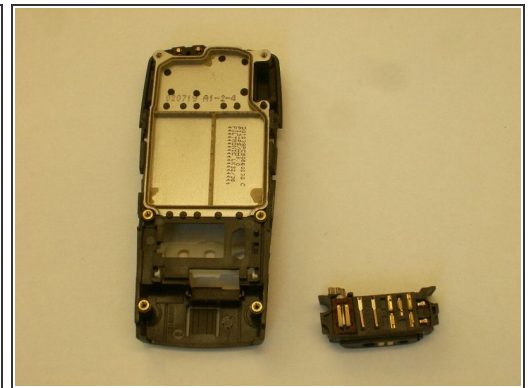
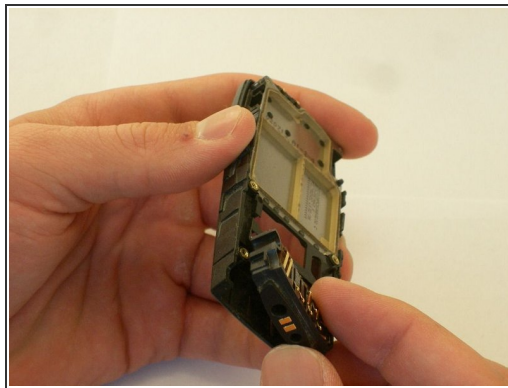
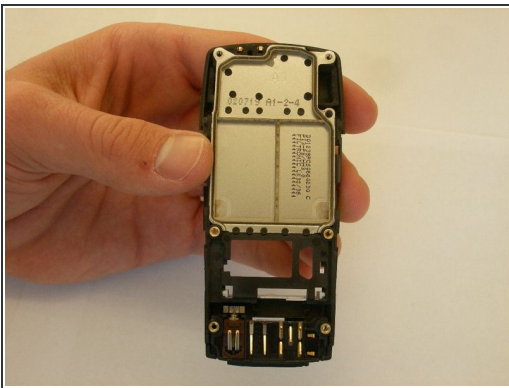
- Grab the top and bottom of the remaining casing.
- Carefully pull apart the casing from the circuit board.

Step 7



- The circuit board should be divided into three parts, completely separate from the back casing, as shown.

Step 8 — Charging Port



- Hold back of phone in hand so that hand is not covering any parts.
- Grasp charge port with thumb.
- Pull out with hand.

To reassemble your device, follow these instructions in reverse order.