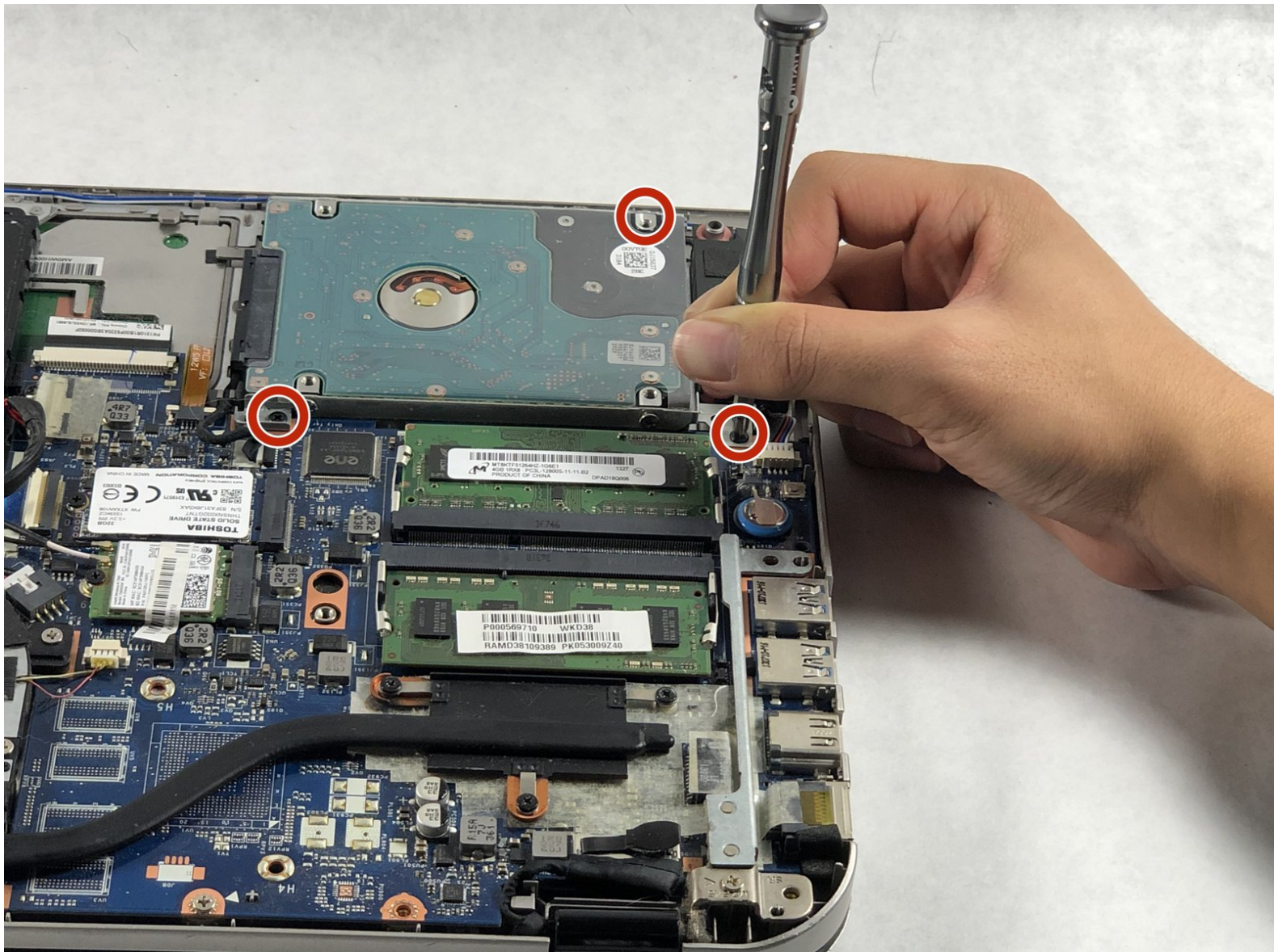




Toshiba Satellite E45T-A4300 Hard Drive Replacement

Use this guide to replace the hard drive of your Toshiba Satellite E45t-A4300.

Written By: James Nguyen



INTRODUCTION

The hard drive is what stores all the memories of the laptop. If the hard drive is damaged, then the laptop won't 'remember' how to be a laptop anymore. A replacement in the hard drive will be needed to bring back the laptop to life.



TOOLS:

- [Phillips #1 Screwdriver](#) (1)
 - [Spudger](#) (1)
-

Step 1 — Back Panel



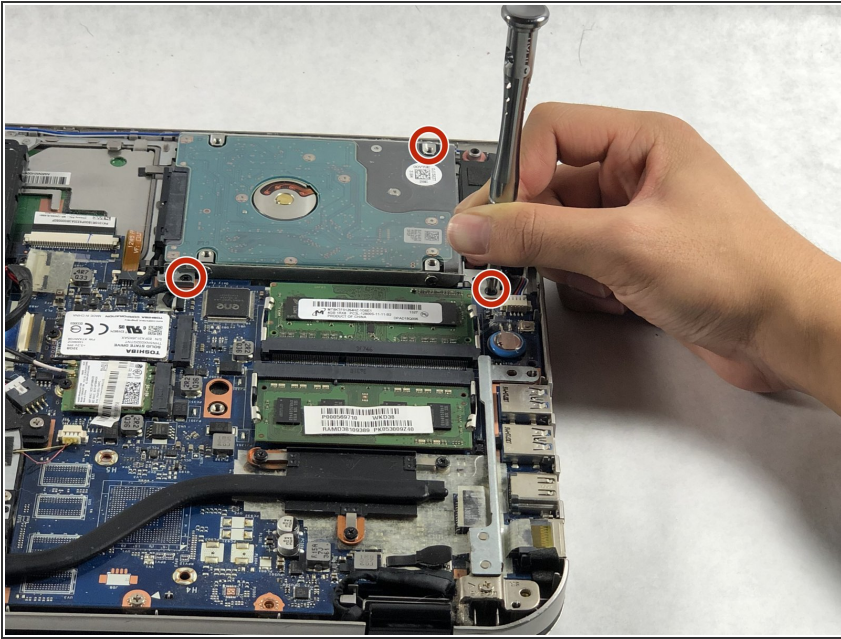
- Remove the twelve 5 mm Phillips #1 screws from the back panel.

Step 2



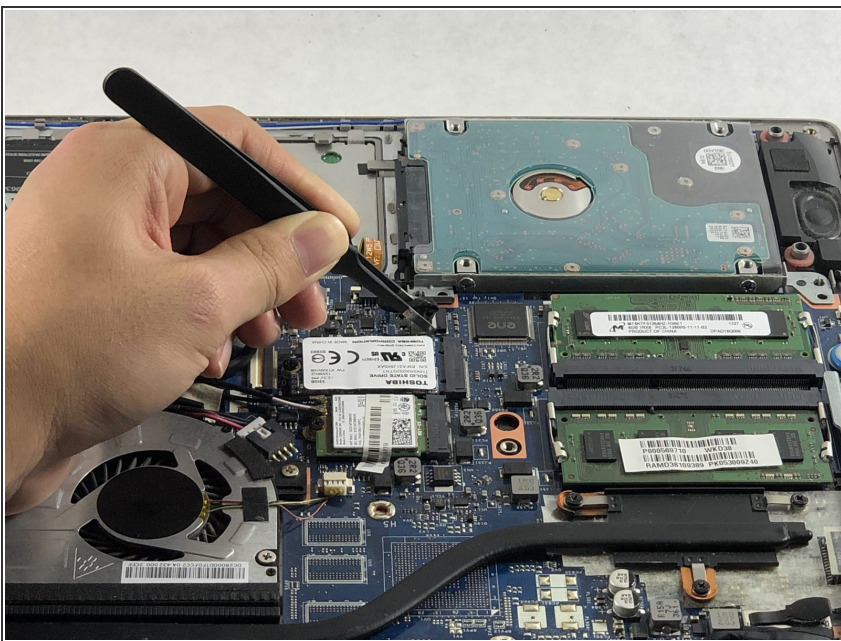
- Pry the back panel open with the plastic spudger or fingernails.
 - ⓘ Pry it gently so that the back panel does not crack.

Step 3 — Hard Drive



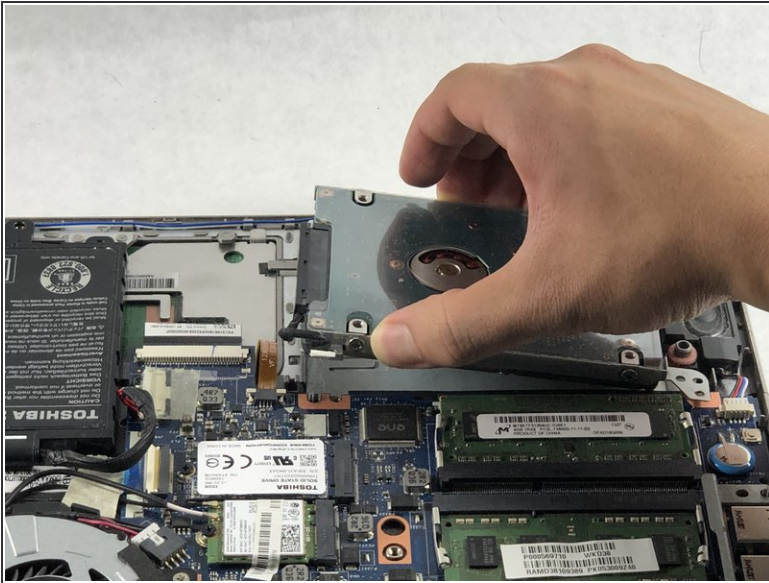
- Remove the three 7mm black screws using the Phillips #1 screwdriver.

Step 4



- Remove the hard drive's connection port with grooved tweezers.

Step 5



- Pull the hard drive out of the hook and remove it from the device.

To reassemble your device, follow these instructions in reverse order.