



# Google Pixel XL Rear Glass Replacement

This repair guide was authored by the iFixit...

Written By: Arthur Shi



# INTRODUCTION

**This repair guide was authored by the iFixit staff and hasn't been endorsed by Google.** Learn more about our repair guides [here](#).

Follow this guide to remove and replace a shattered rear glass panel, or to change the color of the panel, for the Google Pixel XL.

---

## TOOLS:

[iOpener](#) (1)  
[Spudger](#) (1)  
[Suction Handle](#) (1)  
[iFixit Opening Picks \(Set of 6\)](#) (1)  
[iFixit Opening Tool](#) (1)  
[Iso 90% Rubbing alcohol](#) (1)

---


## PARTS:

[Google Pixel XL Rear Glass Panel](#) (1)  
[Google Pixel XL Rear Glass Panel Adhesive](#) (1)

---

## Step 1 — Rear Glass



- [Heat an iOpener](#) and apply it to the phone's back glass panel for two minutes.  
 A hair dryer, heat gun, or hot plate may also be used, but be careful not to overheat the phone—the display and internal battery are both susceptible to heat damage.

## Step 2



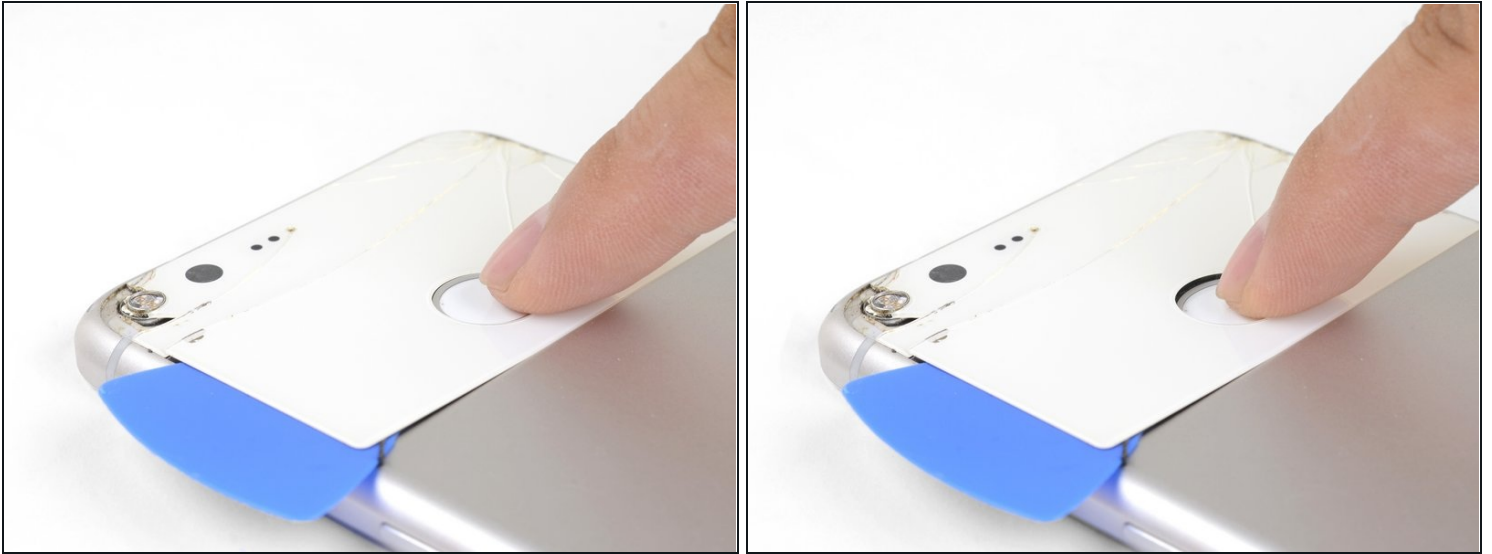
- When the glass is warm to the touch, apply a suction cup close to the edge.
- Lift on the suction cup and insert an opening pick in the gap.
- ① If your back glass is badly cracked, [covering it with a layer of clear packing tape](#) may allow the suction cup to adhere. Alternatively, very strong tape may be used instead of the suction cup. You can also superglue the suction cup to the broken screen.
- ① If the edge of the glass is cracked, you can try to [slide an opening pick underneath the crack](#) and slowly chip the glass out.
- ① Reapplying heat will help loosen adhesive and make the process easier.

## Step 3



- Use the opening pick to slice through the glass panel's perimeter adhesive.
  - ① As you slice the adhesive, make sure that you are slicing above the [NFC pad](#).
- If the slicing becomes hard, reapply heat to the panel.

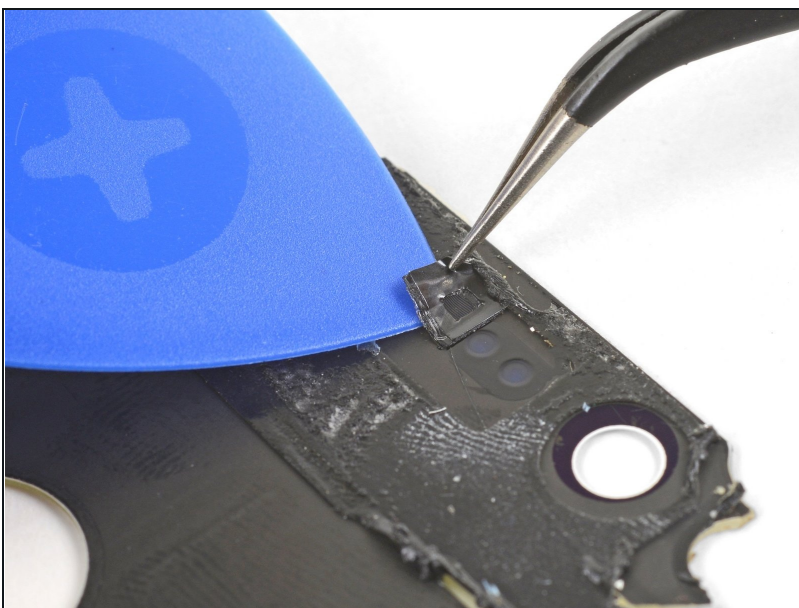
## Step 4



- When you free the back glass around the fingerprint sensor, press down on the sensor firmly until it separates from the back glass.
- Continue to slice through the adhesive underneath the back glass until you are able to remove the panel.

⚠ Cracked glass can be extremely sharp! Be careful while prying and clean up all glass fragments.

## Step 5



- ① If your replacement rear glass does not come with a microphone mesh, you will have to transfer the original over.
- Use an opening pick and [tweezers](#) to carefully pry up and remove the mesh.

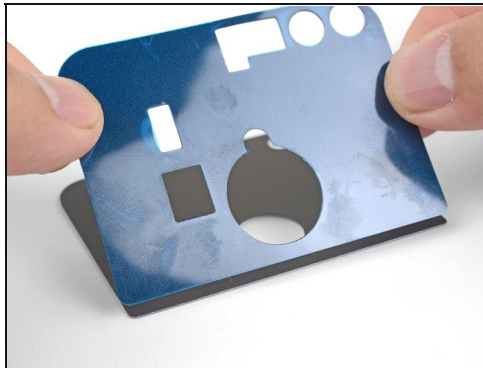


## Step 6



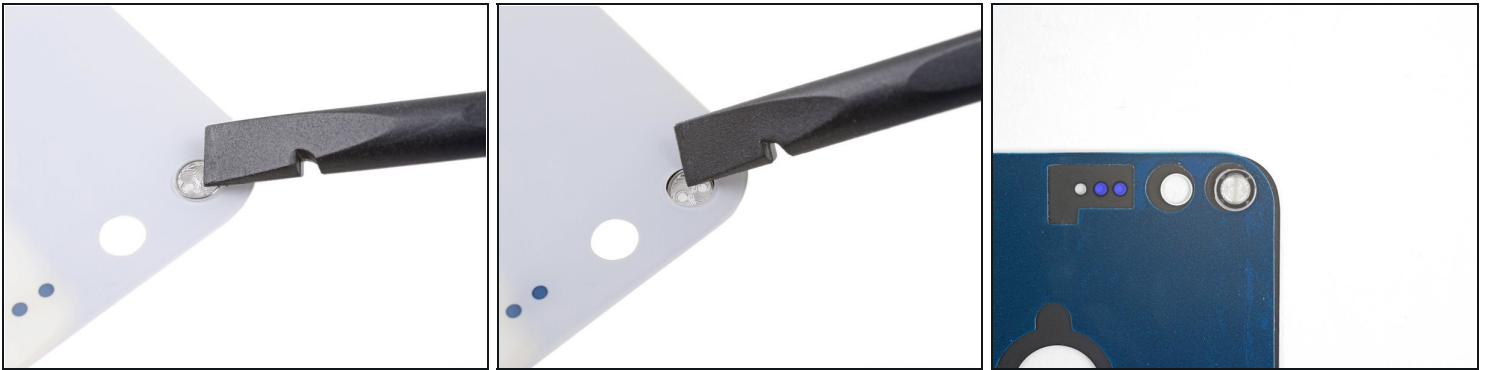
- Use a spudger or opening tool to scrape all adhesive from the frame.
- Use high concentration isopropyl alcohol (over 90%) to wipe away any remaining residue.
- ⓘ Be meticulous with the cleaning. If any adhesive is left on the frame, the replacement panel may not lay flat and adhere properly.

## Step 7



- Peel the white backing away from the included adhesive sheet, making sure to punch out all cutouts.
- Line the bottom edge of the adhesive to the bottom edge of the replacement glass panel.
  - ⓘ Make sure that the backside of the glass panel is facing upwards.
- Slowly lower the adhesive onto the glass panel.
- Rub your fingers against the adhesive to help it bond with the glass panel.

## Step 8



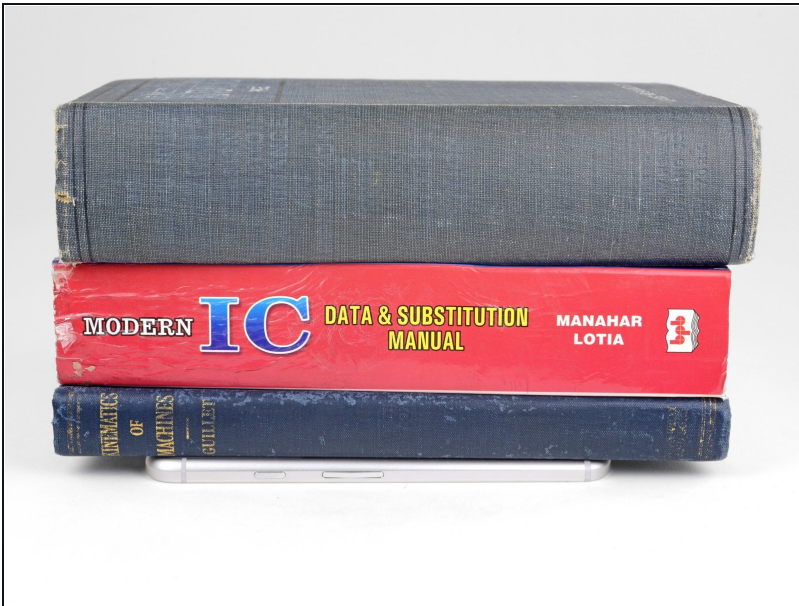
- ① If your replacement part did not come with a flash lens, you must transfer it from your old panel.
- Use a spudger or your finger to firmly press on the lens from the outward-facing side (the side you can usually see on the phone) of the glass panel until it loosens from its recess.
- Remove the lens and transfer it onto the back side of the replacement panel.
  - ① Make sure to orient the flash lens properly such that the fresnel rings are [stacked vertically](#).

## Step 9



- Peel the liner off of the adhesive-backed glass panel.
- Align the glass panel to the bottom edge of the indentation.
- Lower the glass panel into place.

## Step 10



- To help the back glass adhesive bond more securely, stack some heavy books on top of the phone for 30 minutes.

---

To reassemble your device, follow these instructions in reverse order.

Repair didn't go as planned? Check out our [Google Pixel XL Answers community](#) for troubleshooting help.