



# Mac Pro 2009-2012 Case Replacement

If your Mac Pro has a scratched or damaged...

Written By: remitouch



# INTRODUCTION

If your Mac Pro has a scratched or damaged case, here is a tutorial to completely replace it.

Anyone can do it, but the disassembly and reassembly are very long steps. Patience is the key to success.

---

## TOOLS:

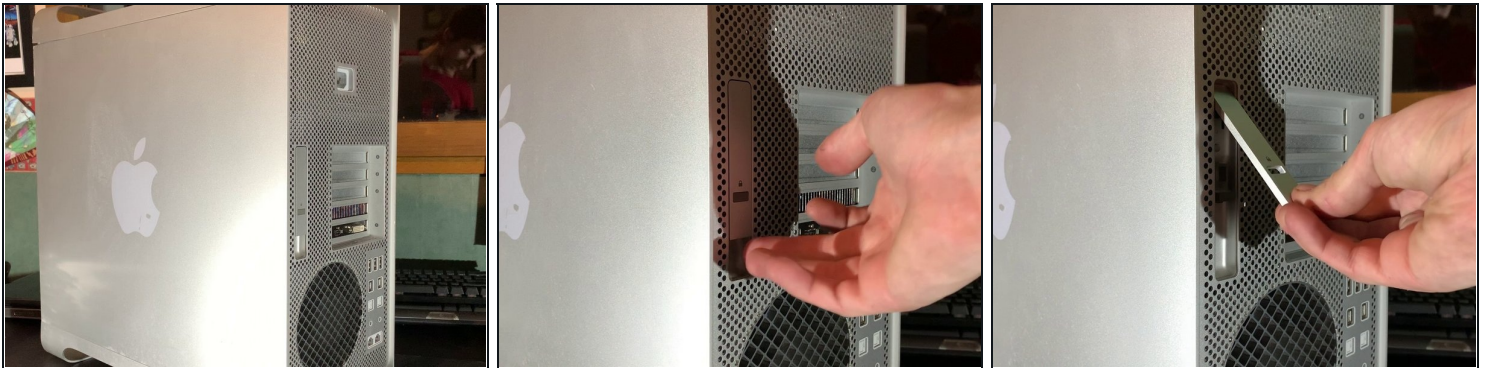
[Un tournevis cruciforme](#) (1)

## PARTS:

[Mac Pro 2009-2012 Case](#) (1)

---

### Step 1 — Open the Case

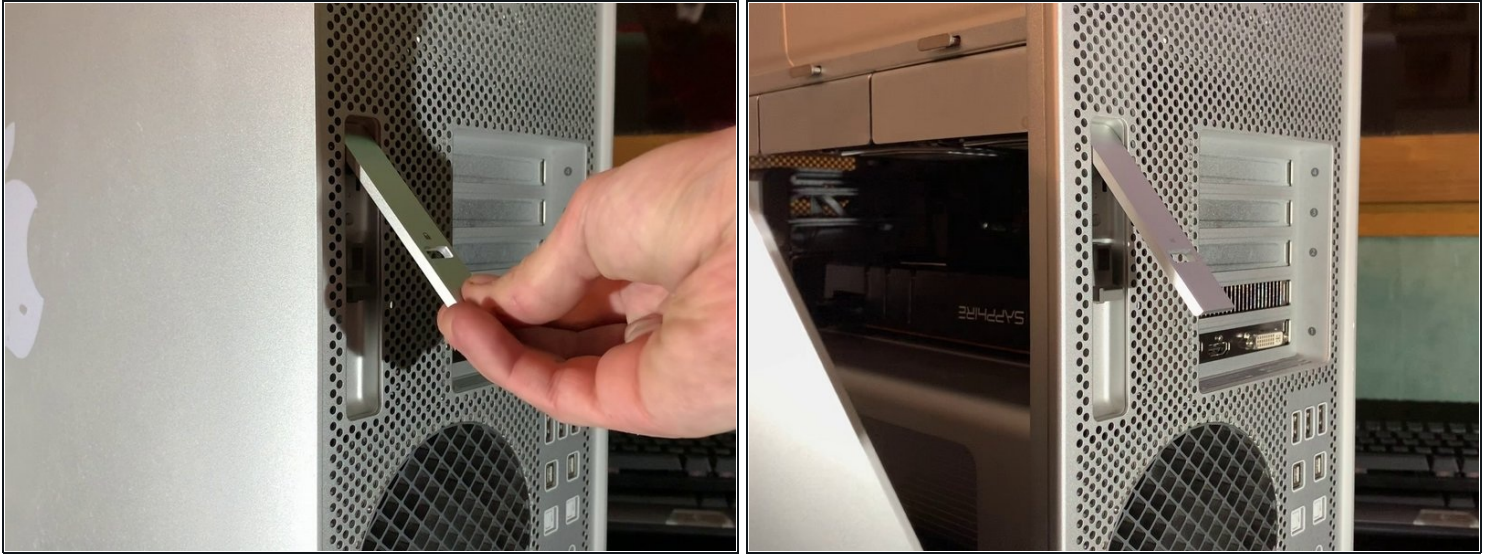


- To open the Mac Pro, you'll have to lift the clip on the back of the case

☒ Leave the clip open during the entire disassembly!



## Step 2 — Remove the side panel



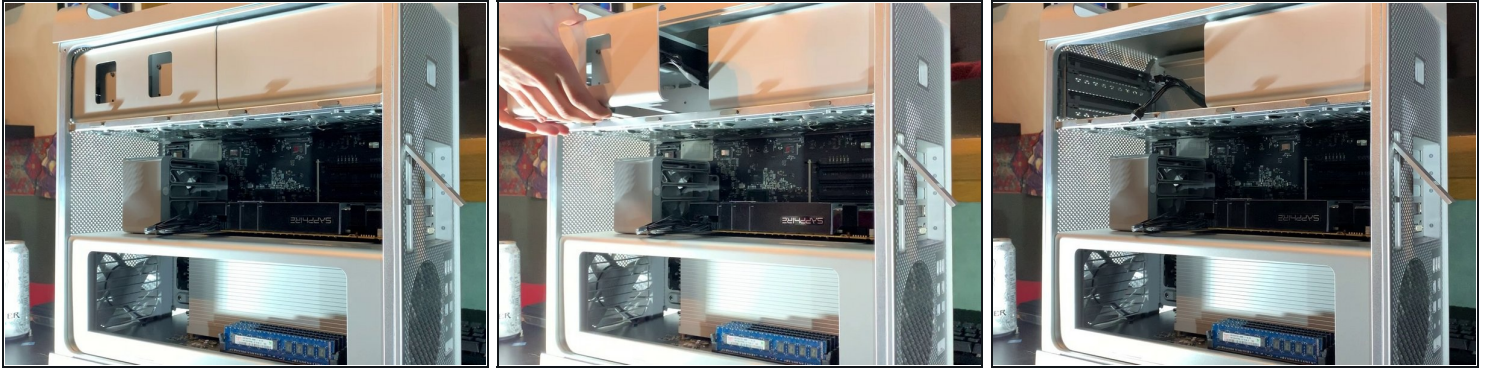
- Lift the flap to put it in the unlocked position, the panel should separate from the box without forcing.

## Step 3 — Remove the hard drives



- Then to remove the hard drives, pull them towards you with a bit of force.

## Step 4 — Remove the DVD drives



- Pull the DVD drives towards you, just like the hard drives.

## Step 5 — Remove the CPU board

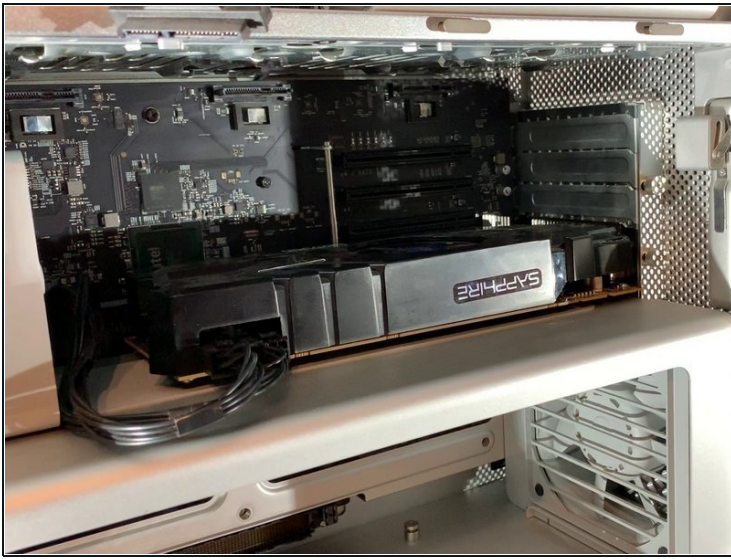


- Press both latches to unlock the bracket and then pull it towards you.

⚠ You shouldn't need to apply much force.

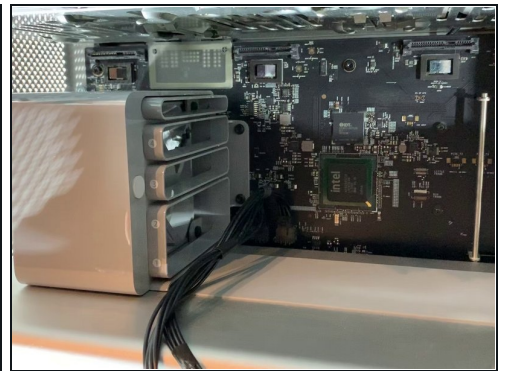
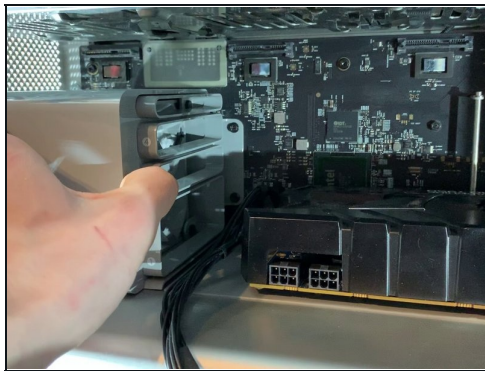
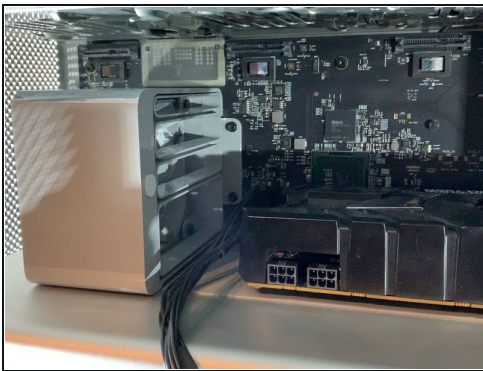


## Step 6 — Disconnect the GPU



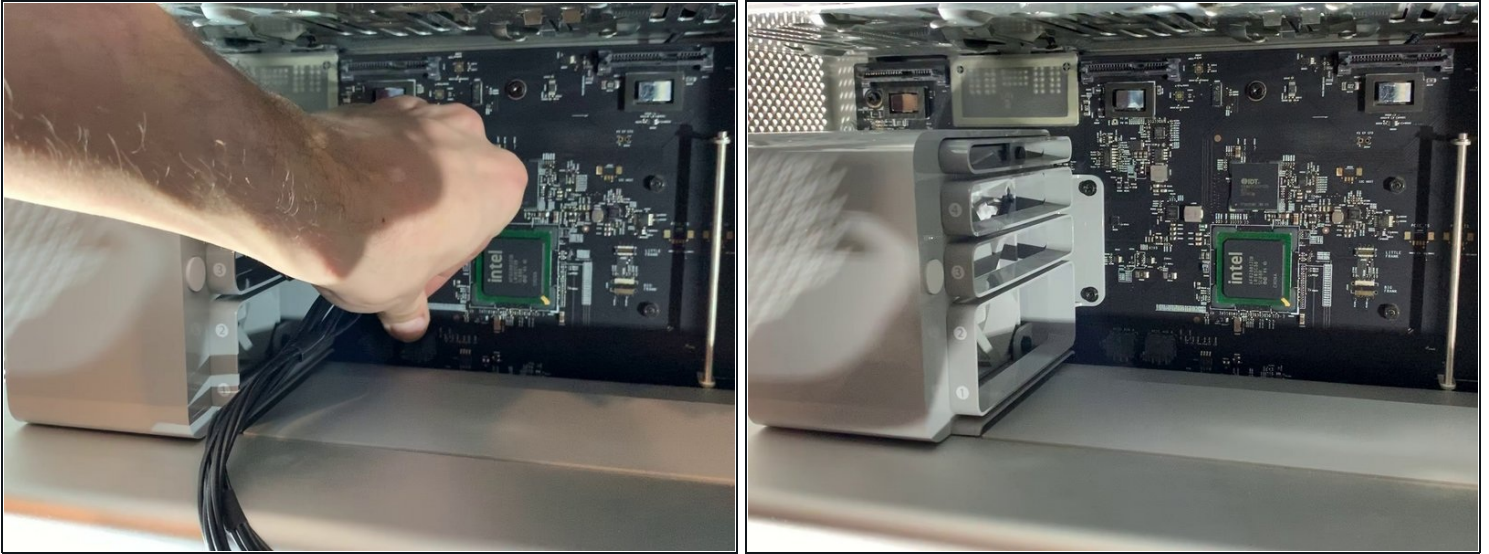
- Remove the 6 or 8 pin connector from your graphics card.
- ⓘ This step is optional, it will depend on the graphics card of your Mac Pro

## Step 7 — Disconnect the GPU power supply ( Optional )



- On the power supply there is a button, press it to move the power supply to the left (see picture)
  - Then pull the graphics card towards you to take it out of the box
- ⓘ This step is optional depending on the GPU of your Mac Pro

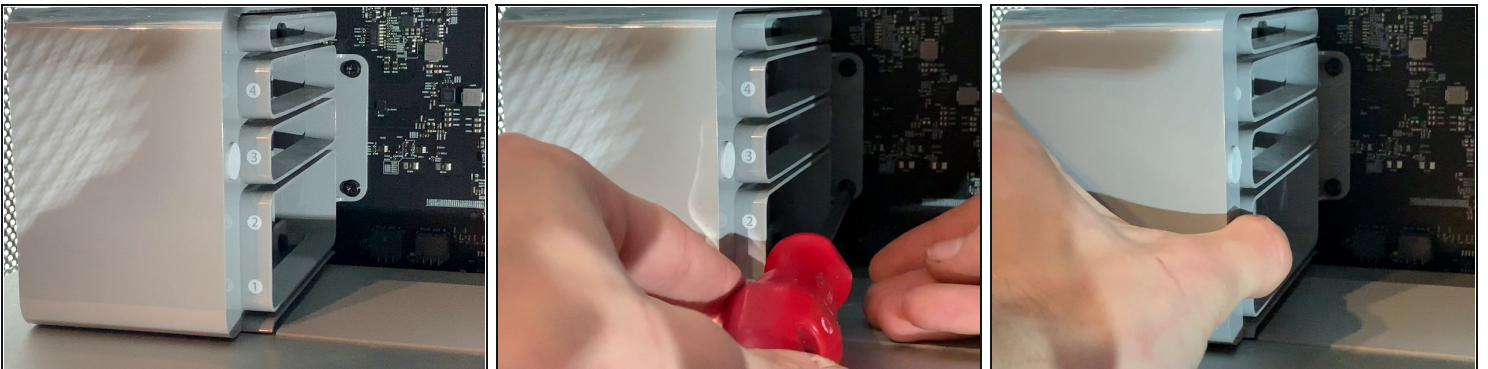
## Step 8 — Disconnect GPU support ( optional)



- Disconnect the PCI-e cables from the motherboard

ⓘ This step is optional depending on your Mac Pro

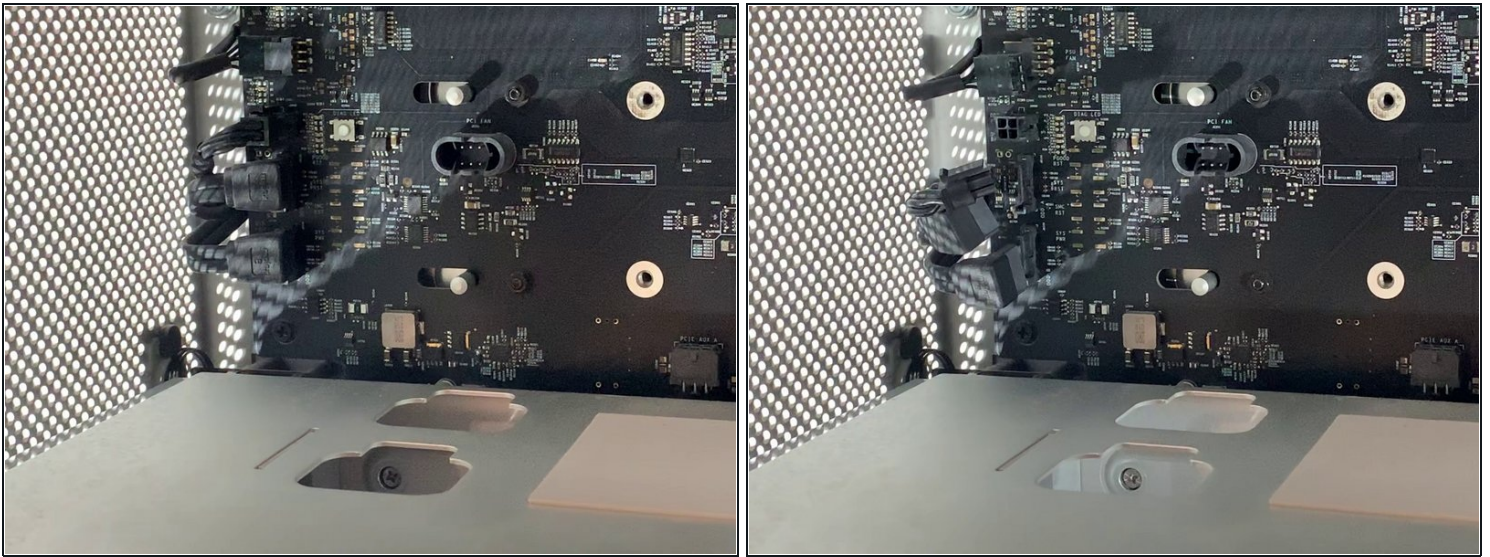
## Step 9 — Take out the PCI-e fan



- With a screwdriver unscrew the two screws that hold the fan bracket to the board
- Pull the fan towards you

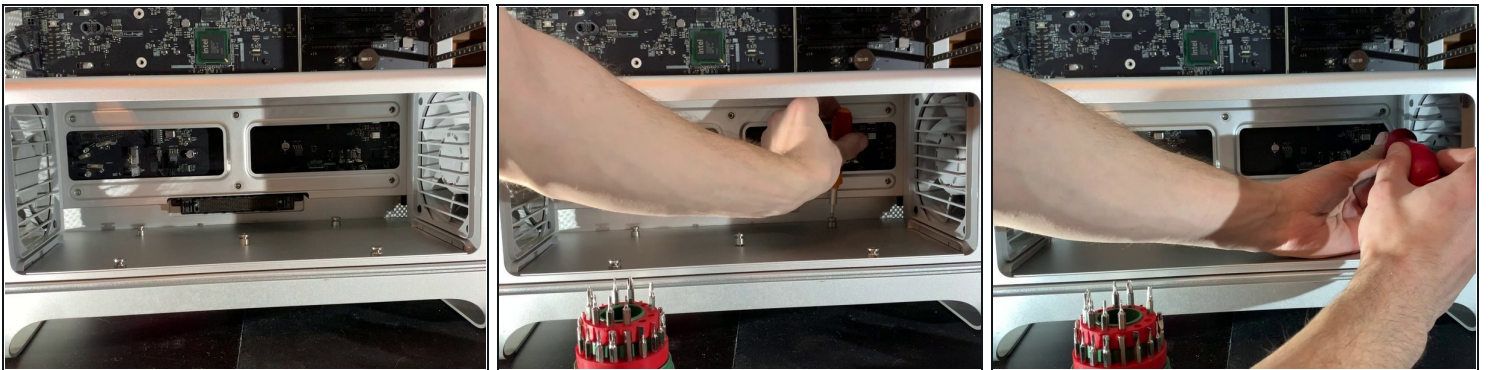


## Step 10 — Disconnect the SATA Cables



- Behind the fan bracket there are 2 SATA cables, a 4 pin mini power supply and a 4 pin fan

## Step 11 — Unscrew CPU support



- With a H2.5 screwdriver, unscrew the screws on the bottom of the bracket (photo 2)
- With a Phillips screwdriver, unscrew the screws on the bottom of the case (photo 3)

## Step 12 — Remove the CPU Fan



- Remove the clip at the top of the fan
- Pull on the top of the fan a bit.

## Step 13 — Remove the CPU Fan



- Similar to the top remove the clip at the bottom and pull out the fan.



## Step 14 — Disconnect Fan and Speakers



- Disconnect the 2 x 4pin fan cables and the 1 x 2 pin speaker cable

⚠ Do not forget this step or you risk damaging your connectors on the motherboard and make unusable fans and speaker!

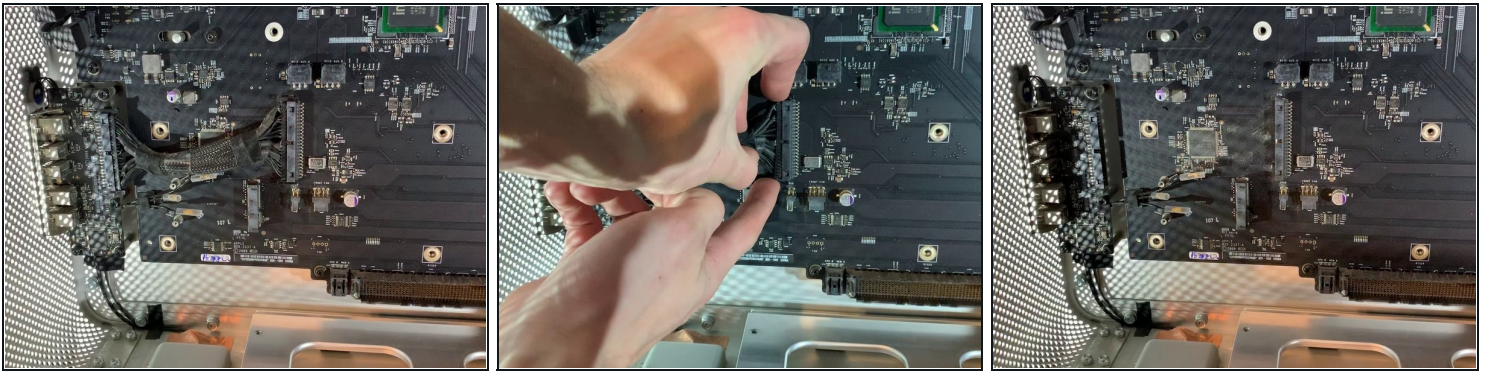
## Step 15 — Remove the CPU Support



- Pull the CPU support towards you

⚠ Do not use force during this step, It it does not come out easily ensure the fans are not blocking the exit.

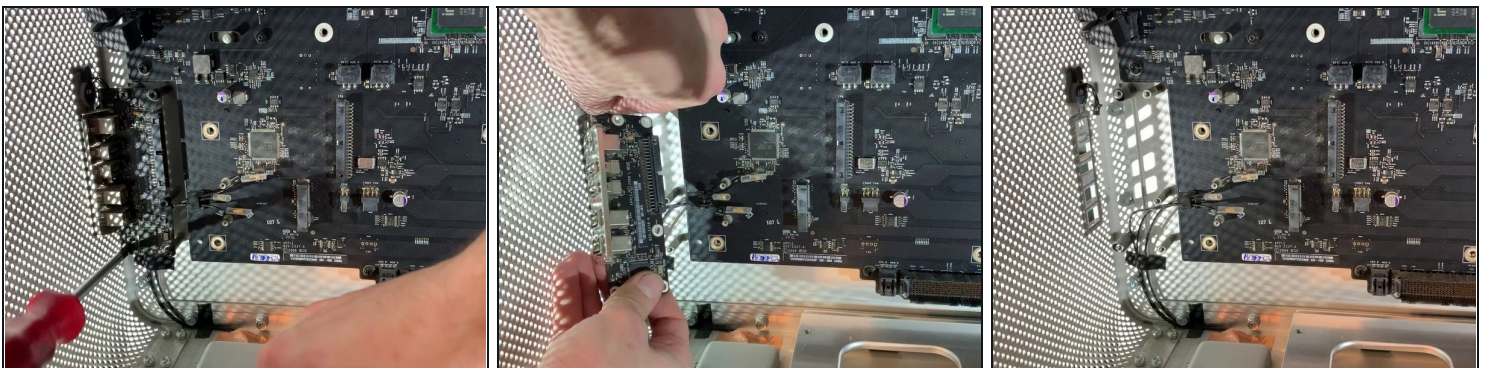
## Step 16 — Remove the expansion card connector



- Remove the ribbon that connects the motherboard to the expansion card (USB, Jack, Power Off etc.)

⚠ Attention, it is necessary to remove the cable carefully so as not to bend the pins which are in the connector of the motherboard!

## Step 17 — Remove the expansion card

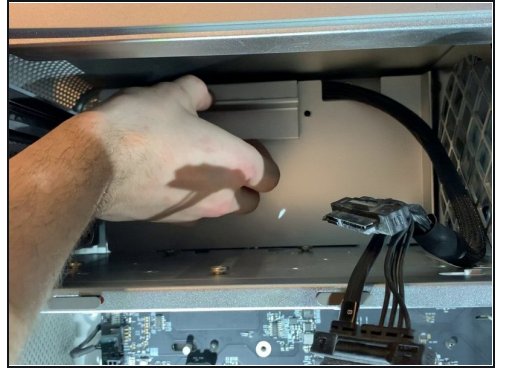
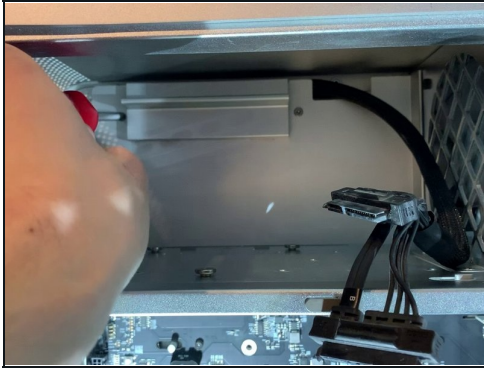
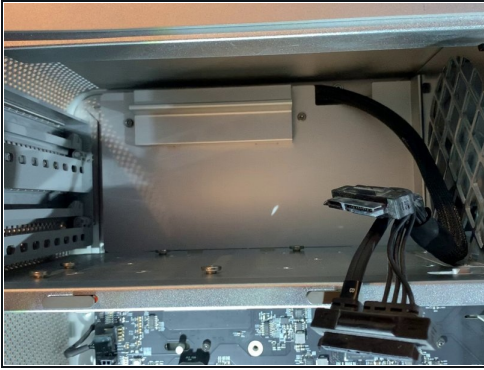


- Unscrew the 6 screws that hold the card in place.

⚠ Be careful to unplug the power cable on the card !!

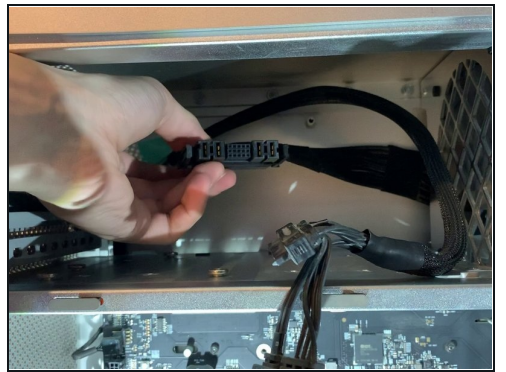
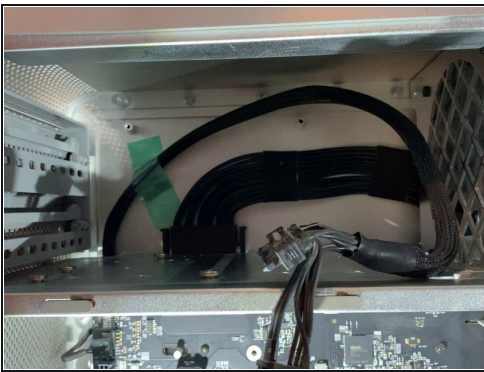


## Step 18 — Remove the cover



- unscrew the two screws and remove the cover

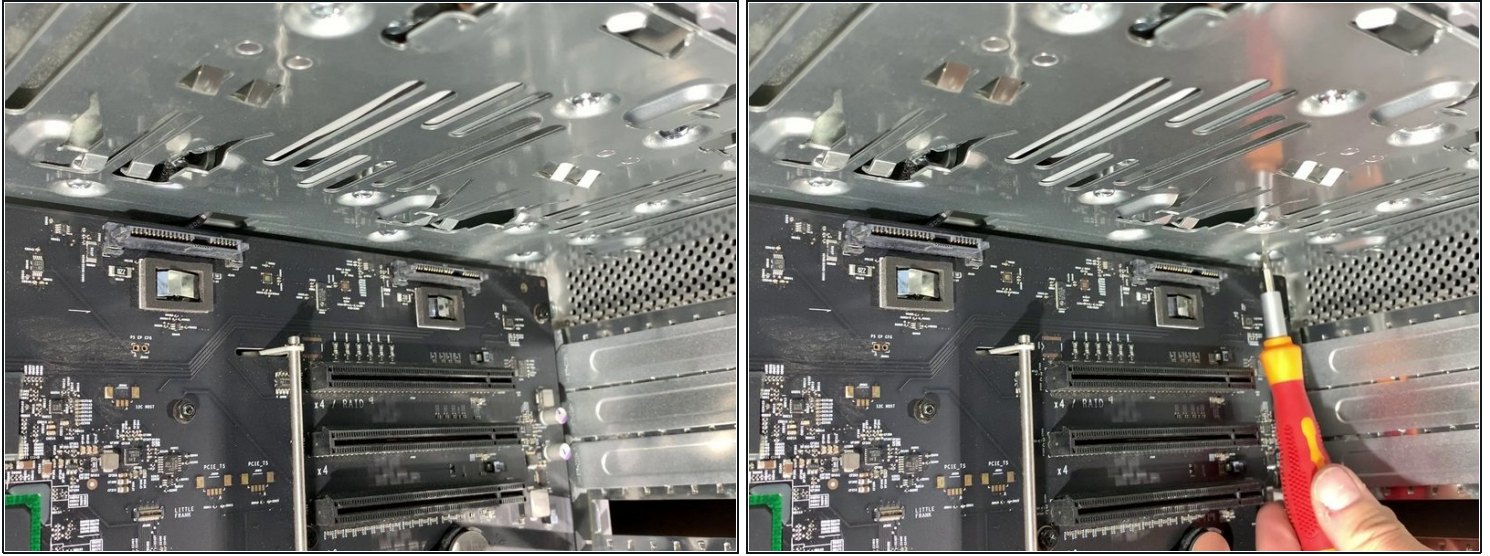
## Step 19 — Unplug the power supply



- Push on both knobs to remove the power connector

⚠ Do not use force, if you are struggling ensure you are squeezing the clips adequately.

## Step 20 — Separate the power supply



- Unscrew the 4 screws that hold in the power supply

## Step 21 — Remove the power supply

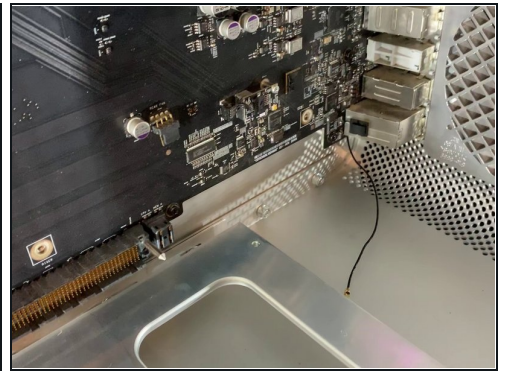
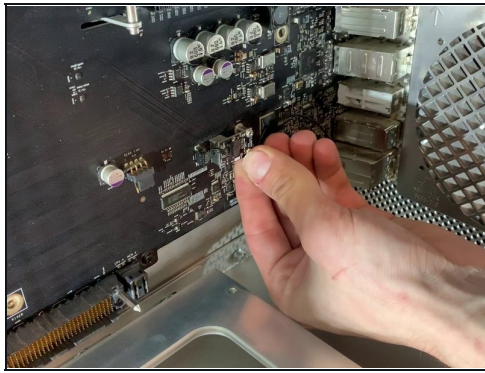
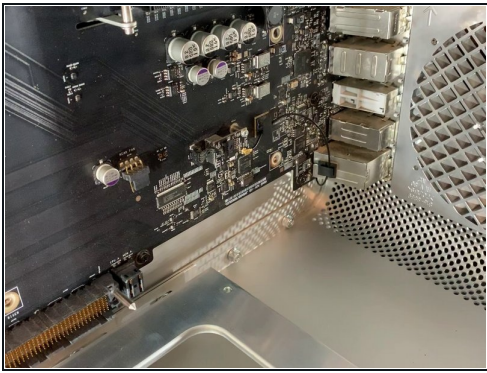


- Pull the power supply towards you.

⚠ Be sure to pull the connector forward and watch the cables

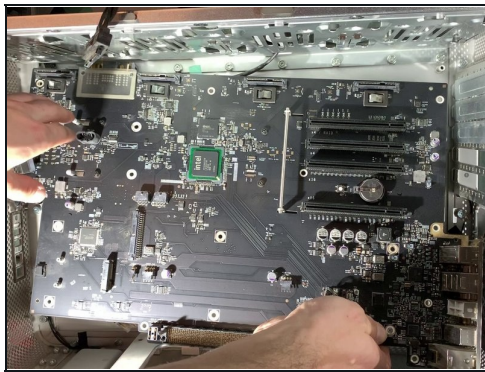
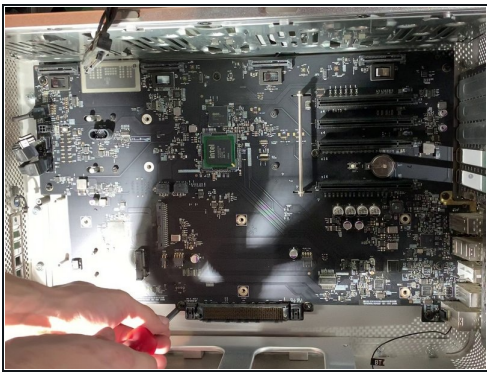


## Step 22 — Detach the bluetooth antenna



- Unclip the bluetooth antenna

## Step 23 — Remove the mother board



- Unscrew the 10 screws holding in the motherboard

## Step 24 — Change the case



- Follow the steps in reverse to resemble.

---

To resemble, follow the instructions in the reverse order.