



Microsoft Lumia 535 Disassembly

Disassembly of Microsoft Lumia 535

Written By: Dawid Bartniczak





PARTS:

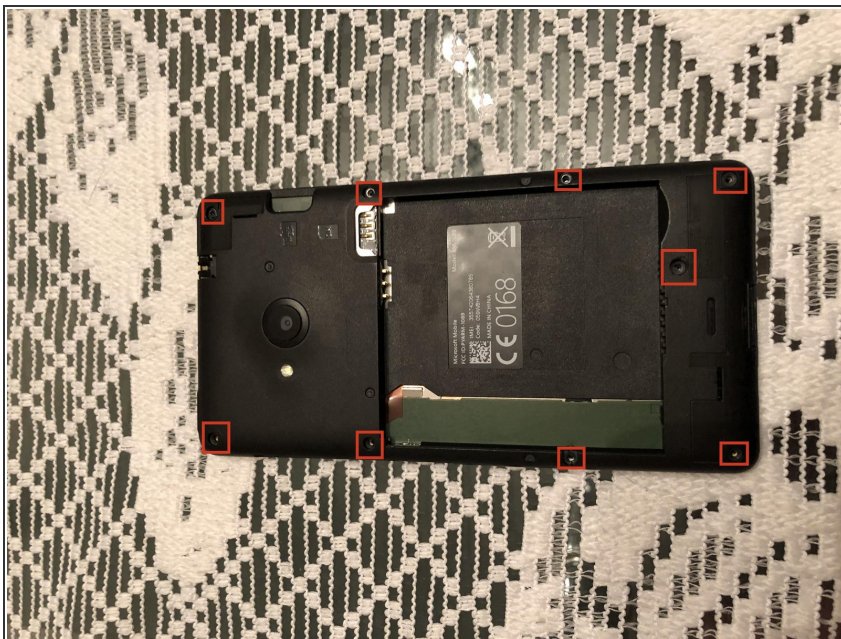
- [iFixit Opening Picks set of 6](#) (1)
- [Mako Driver Kit - 64 Precision Bits](#) (1)

Step 1 — Remove battery



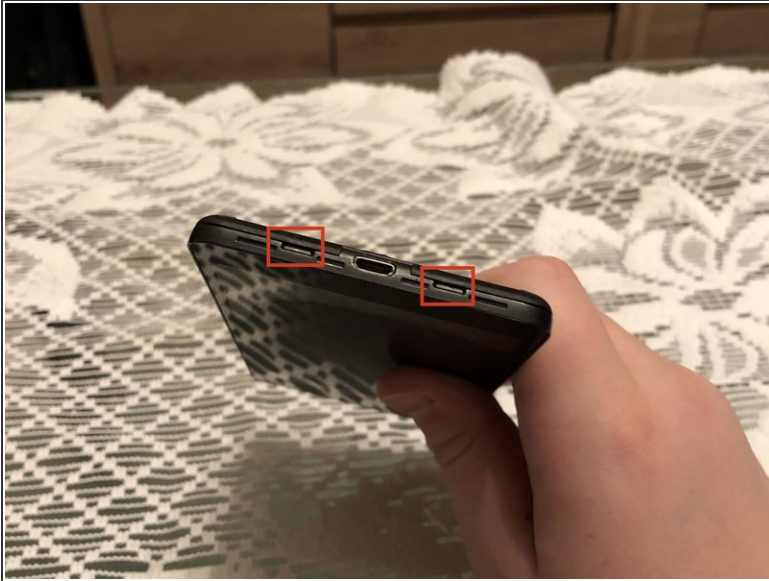
- Turn off phone first

Step 2 — Unscrew 9 screws



- Torx T4 screws

Step 3 — Detach back plate



- Places to start
- Use your finger or credit card.

Step 4 — Unplug ribbon cables and antenna



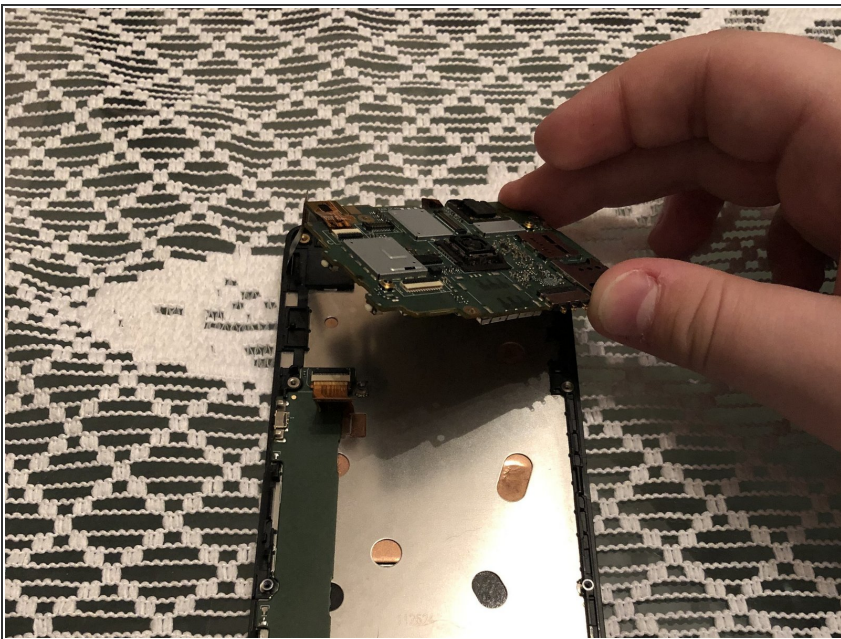
- Display ribbon
- Digitizer ribbon
- Micro-USB dock cable
- Antenna cable
- Be careful while unplugging those. They are breaking very easy.

Step 5 — Unscrew 2 screws



- Torx T4 screws

Step 6 — Detach motherboard



- Lift it and pull it towards you

Step 7 — Detach Micro-USB dock



- Lift it

To reassemble your device, follow these instructions in reverse order.