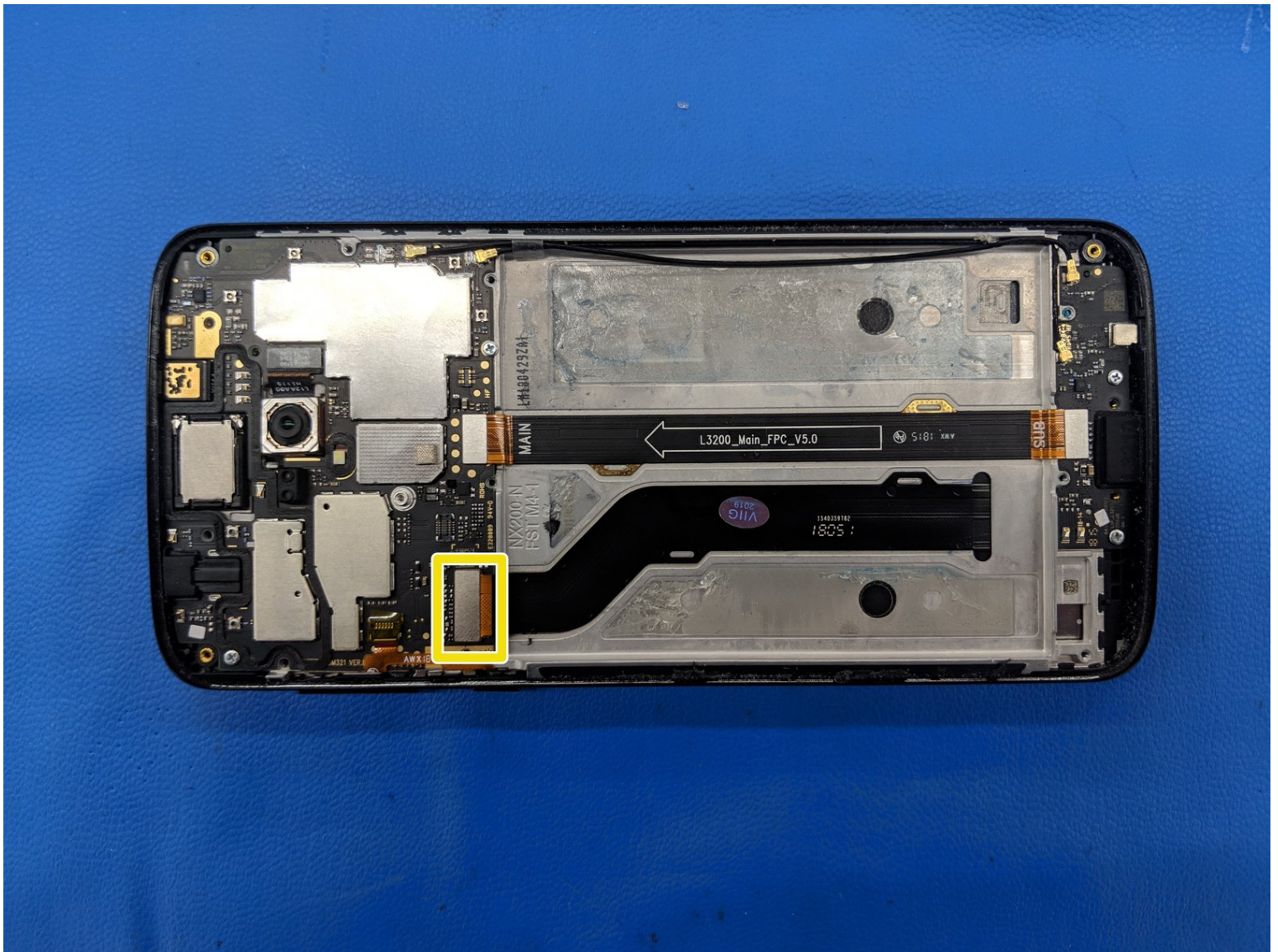




Moto E5 Plus Screen Only Replacement

This guide will show you how to do a...

Written By: Patrick



INTRODUCTION

This guide will show you how to do a screen-only replacement on your Motorola E5 Plus or Supra. Buying a screen with attached frame is highly recommended.


Before you begin, download the [Rescue and Smart Assistant](#) app to backup your device and diagnose whether your problem is software or hardware related.

TOOLS:

[Phillips #00 Screwdriver](#) (1)
[iFixit Opening Picks \(Set of 6\)](#) (1)
[Suction Handle](#) (1)
[Halberd Spudger](#) (1)
[Heat Gun](#) (1)
[Spudger](#) (1)
[Jimmy](#) (1)
[B7000 Adhesive](#) (1)

Step 1 — Battery



 The back and frame of this phone is made of plastic. Be careful when heating the phone.

- Apply heat, then use a suction cup to lift the back enough to fit an opening pick underneath.
- Proceed to separate the adhesive around the edges of the phone, reapplying heat as needed.

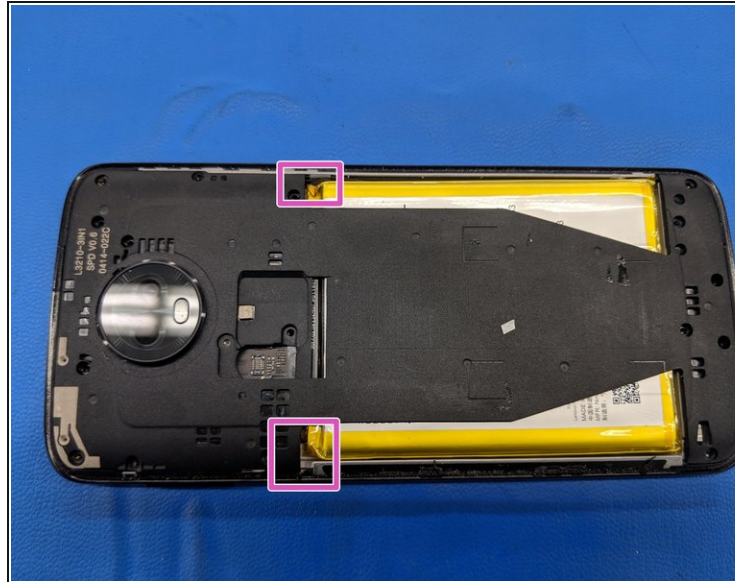
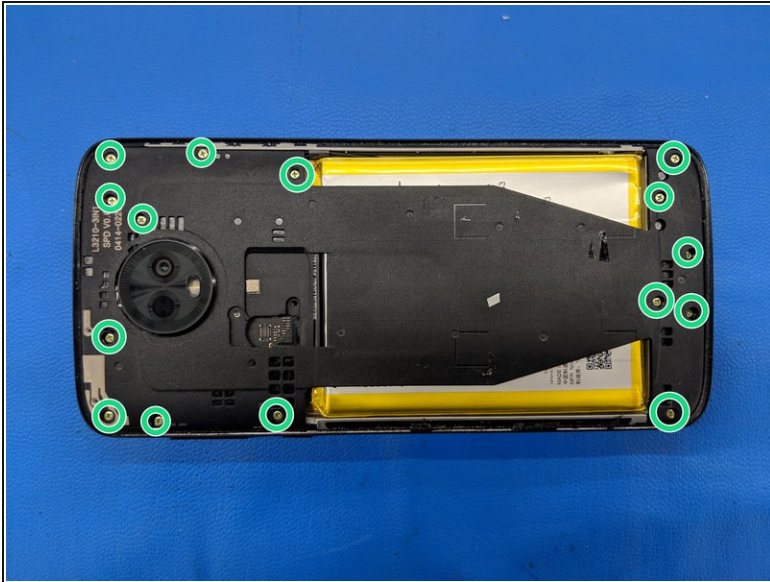
Step 2



⚠ The back of the phone is still attached via the fingerprint sensor's ribbon cable.

- Gently pull the back of the phone towards the charging port to reveal the shielding plate.
- Remove the screws and the metal plate.
- Disconnect the fingerprint sensor cable using a Halberd spudger or opening pick and remove the back of the phone.

Step 3



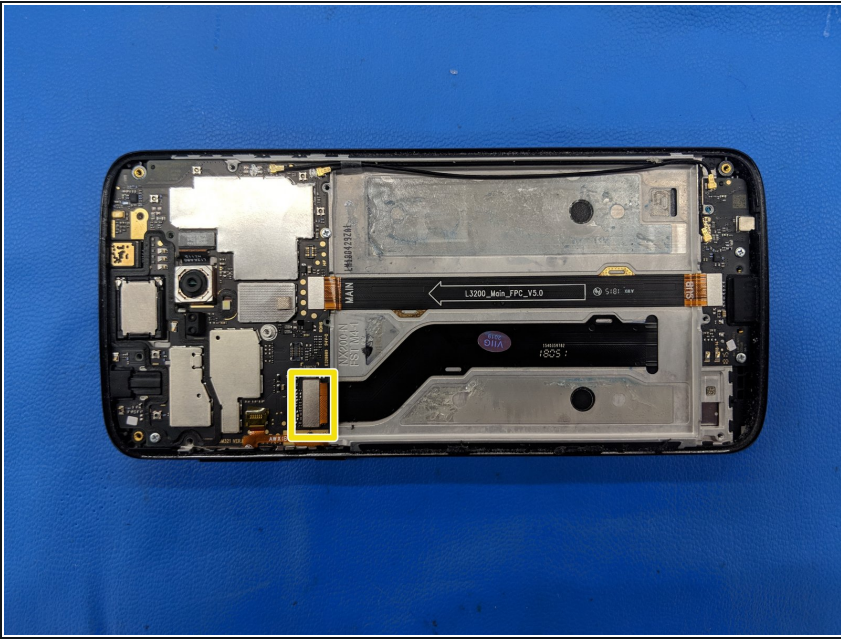
- Remove 15 #00 Philips screws.
- Insert the pointed end of a spudger underneath the plastic midframe on either side of the battery and pry upwards to disengage the clips.
- Remove the midframe.

Step 4



- Disconnect the battery.
- Remove the battery. The battery has adhesive on each side.
- ⓘ Use small amounts of isopropyl alcohol to soften the adhesive if you are having difficulty removing the battery.

Step 5 — Screen Only



- Use an opening pick or spudger to disconnect the display ribbon cable.
- Gently peel the display ribbon cable away from the phone frame as shown. It will remain attached to the display assembly.

Step 6



- Gently heat the top of the phone to soften the adhesive. Use a suction cup to lift the display and insert opening picks.
- Starting from the top, separate the display from the frame.
- ⓘ The display cable is attached to the bottom half the display.
- There is a thin flexible plastic frame between the main phone frame and the glass. Check if the replacement part has this frame included.
- For reassembly, B7000 adhesive is recommended over TESA adhesive tape due to the tight tolerances .

To reassemble your device, follow these instructions in reverse order. B7000 adhesive is highly recommended to attach the replacement screen to the frame.