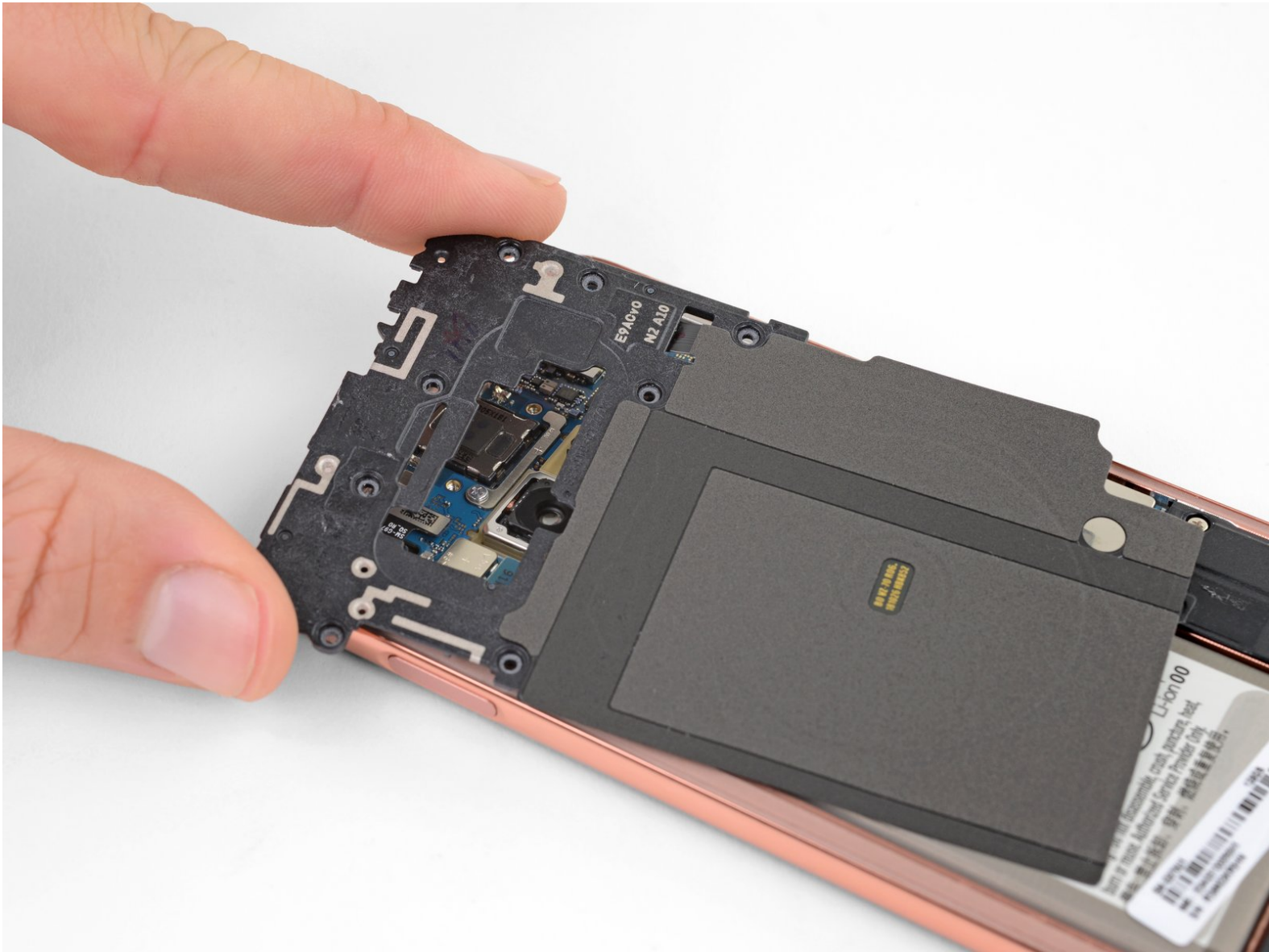




# Samsung Galaxy S10e Midframe Replacement

Prerequisite-only guide to remove the midframe in a Samsung Galaxy S10e.

Written By: Adam O'Camb



---

## INTRODUCTION

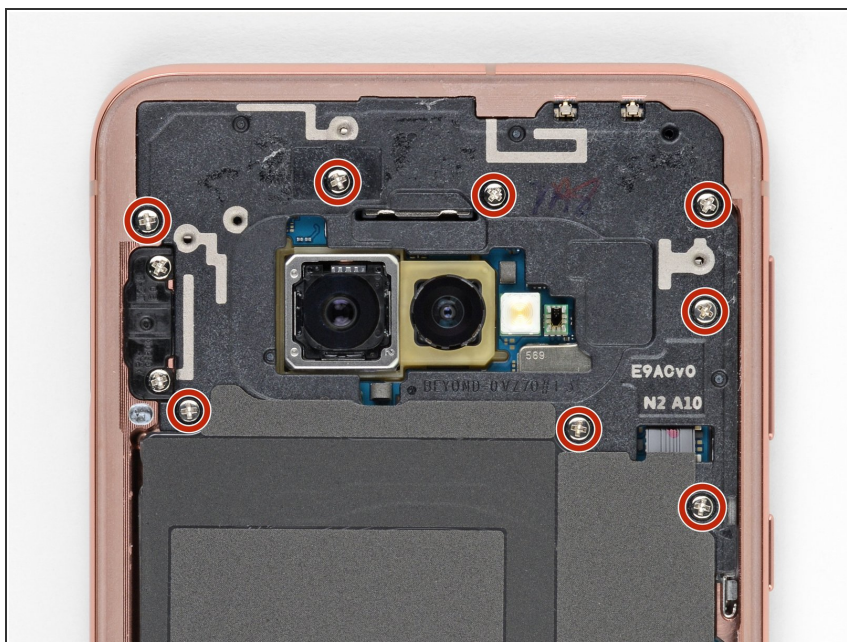
Prerequisite-only guide to remove the midframe in a Samsung Galaxy S10e. The wireless charging coil and NFC coil are both included in the midframe.

---

### TOOLS:

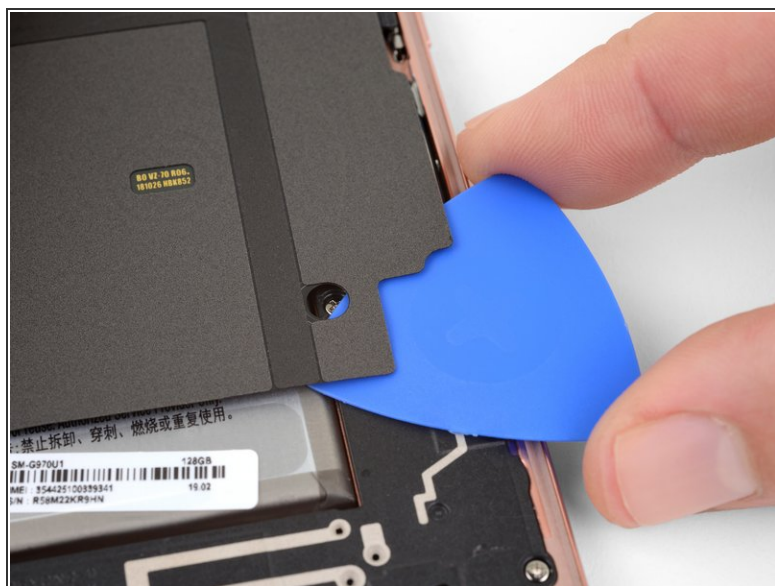
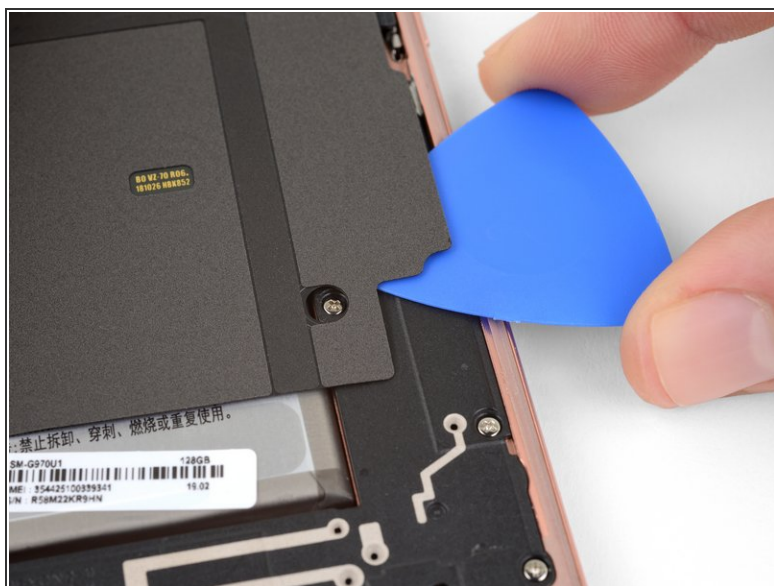
- [iFixit Opening Picks \(Set of 6\)](#) (1)
  - [Spudger](#) (1)
  - [Phillips #00 Screwdriver](#) (1)
-

## Step 1 — Remove the midframe



- Remove the eight 3.9 mm Phillips screws securing the upper midframe to the phone.

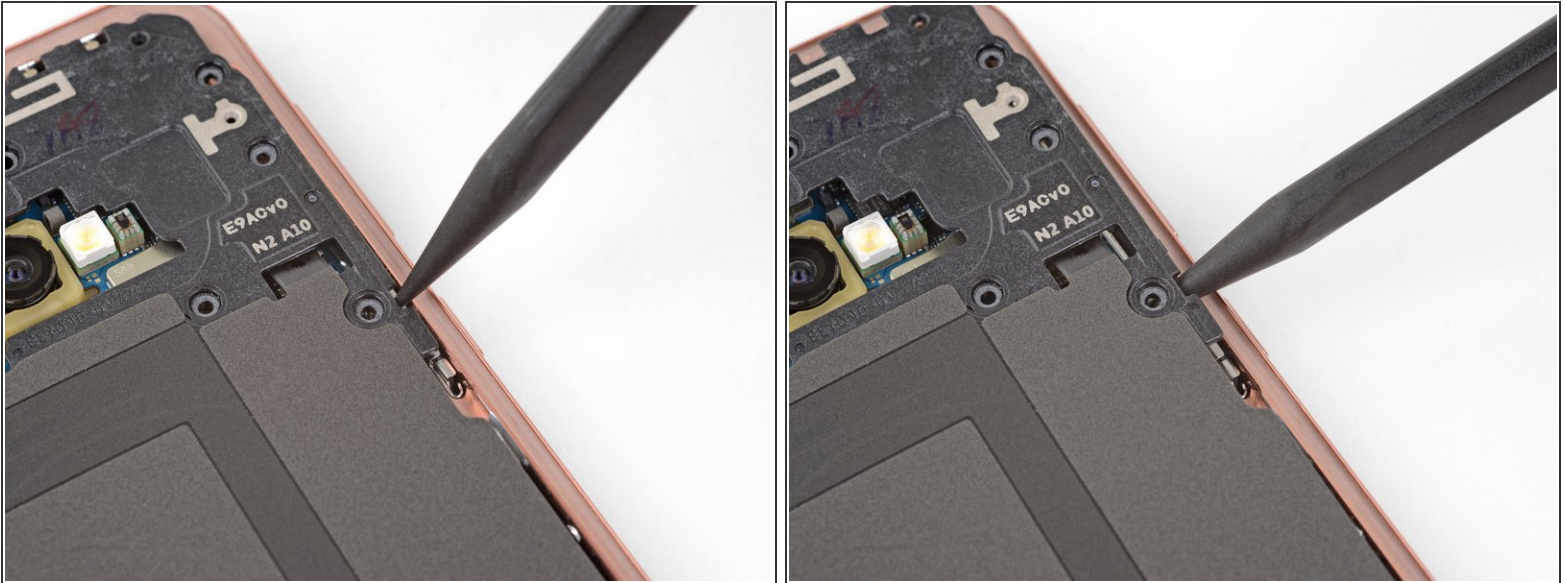
## Step 2



- Slide an opening pick under the bottom right corner of the upper midframe to separate the adhesive holding it to the lower midframe.

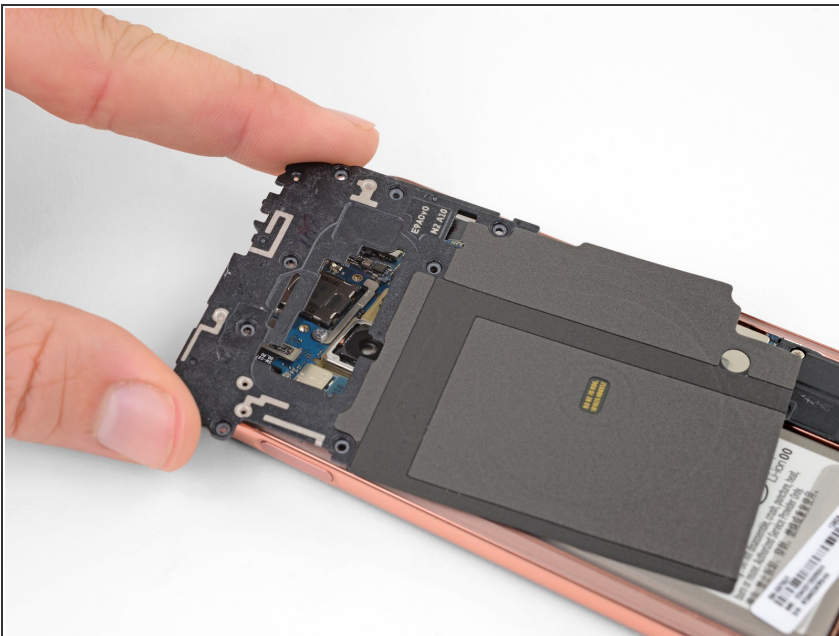


### Step 3



- Insert the point of a spudger in the small cutout on the right edge of the plastic part of the upper midframe, near the Bixby button.
- Use the point of the spudger to pry the midframe up from the phone chassis.

### Step 4



- Lift the midframe by the plastic section and remove it from the phone.
- ✦ To reinstall, first insert the top edge of the assembly into the phone's frame, and then gently press down on the rest of the assembly to snap it into place.

Take your e-waste to an [R2 or e-Stewards certified recycler](#).

Repair didn't go as planned? Try some [basic troubleshooting](#), or ask our [Answers community](#) for help.