



# HP Pavilion g7-2023cl Hard Drive Replacement

This guide will show you how to replace the HP Pavilion g7-2023cl Hard Drive.

Written By: Thomas Maloney



## INTRODUCTION

There are a few reasons to replace the hard drive. Your hard drive failed and won't boot, the hard drive has become corrupted, or you simply need more hard drive space. Whatever the reason you need to replace the hard drive, this guide will show you how to do it.

This guide is written to replace the hard drive assuming you want the maximum amount of storage space. That is why the hard drive listed under parts is a 1 terabyte hard drive which is the largest hard drive this device can use. You can decide what hard drive you want to install in your device so long as the hard drive is a *9.5 mm (0.37 in) × 6.35 cm (2.50 in) SATA Hard Drive*.

This guide assumes you are replacing the the hard drive with its hardware kit installed. If you don't know how to install the hard drive hardware kit please follow this guide here [HP Pavilion g7-2023cl Hard Drive Hardware Kit Replacement](#). Currently, the market for 9.5 mm (0.37 in) × 6.35 cm (2.50 in) SATA hard drives rarely sell the hardware kit pre-installed.



### TOOLS:

- [Phillips #0 Screwdriver](#) (1)
- [iFixit Opening Tools](#) (1)
- [Spudger](#) (1)
- [Anti-Static Wrist Strap](#) (1)



### PARTS:

- [HP Pavilion g7-2023cl Hard Drive](#) (1)

## Step 1 — Battery



- ⚠ Shut off your device and disconnect the power cord. Disconnect any external devices connected to the device.
- Place your finger on the battery lock slider, press toward the center of the laptop to unlock the battery.
- ⓘ The lock will make a click sound letting you know that the battery is unlocked.

## Step 2



- Use your thumb to pry up the edge of the battery and lift it out of the device.
- ★ When replacing the battery, align the notch on the battery with the battery lock on the device. Gently press down on the battery until you hear the lock click, which signals that the battery is secure.



## Step 3 — Service Door



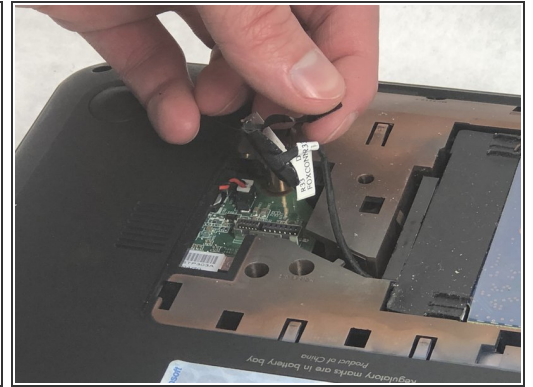
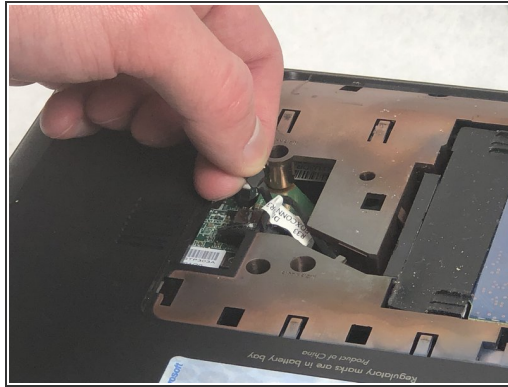
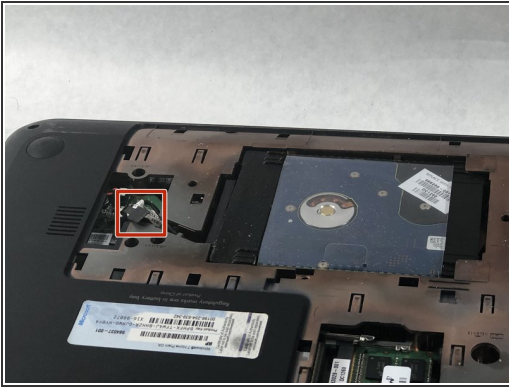
- Using a Phillips #0 screwdriver, loosen the service door screw.
- ⓘ This is a captive screw that will remain attached to the service door.

## Step 4



- Lift the service door up and away from the device.

## Step 5 — Hard Drive



- Locate the hard drive cable connector pull tab.
- Pinch the pull tab pulling upwards from the motherboard to disconnect the hard drive cable.
- ❗ To reconnect the cable, align it so that the cable from the connector is facing the battery and the cable lays in the groove of the base enclosure.

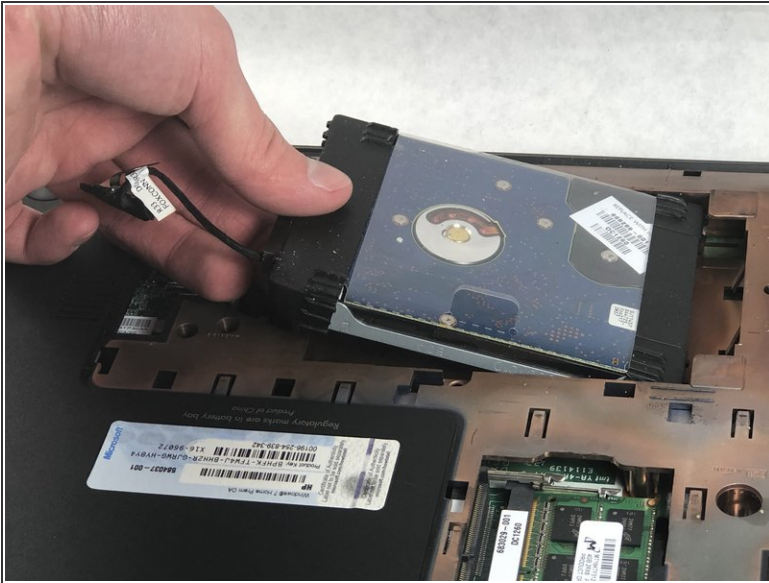
## Step 6



- Use a spudger or other ESD-safe prying tool to lift one side of the hard drive up and out of the base enclosure.
- ❗ You may be able to lift up the hard drive with just your fingers.



## Step 7



- Grab the end of the hard drive.
- Pull the hard drive out of the base enclosure at an angle.
- ❗ To replace the hard drive, insert it at the same angle you removed it from and slide it back into the base enclosure until it lays flat.

To reassemble your device, follow these instructions in reverse order.