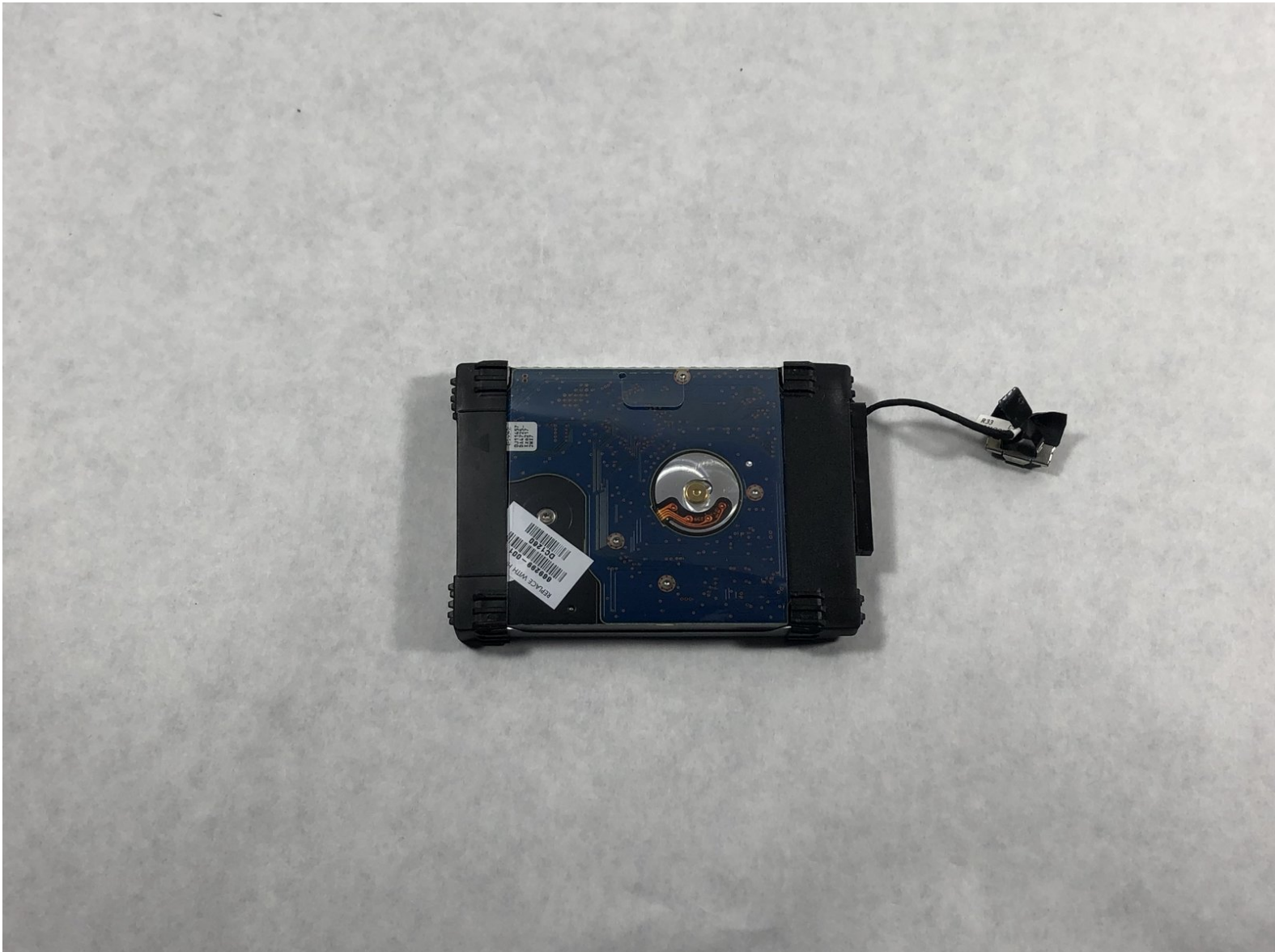




# HP Pavilion g7-2023cl Hard Drive Mounting Bracket Replacement

This guide will show you how to replace the HP Pavilion g7-2023cl Hard Drive Mounting Bracket.

Written By: Thomas Maloney



## INTRODUCTION

There are a few reasons to replace the hard drive mounting bracket. Your hard drive mounting brakcet is faulty, or you want to replace your hard drive with a new hard drive. Whatever the reason, this guide will show you how to replace the hard drive mounting bracket. You can decide what hard drive you want to replace your in your device so long as the hard drive is a *9.5 mm (0.37 in) × 6.35 cm (2.50 in) SATA Hard Drive*.



### TOOLS:

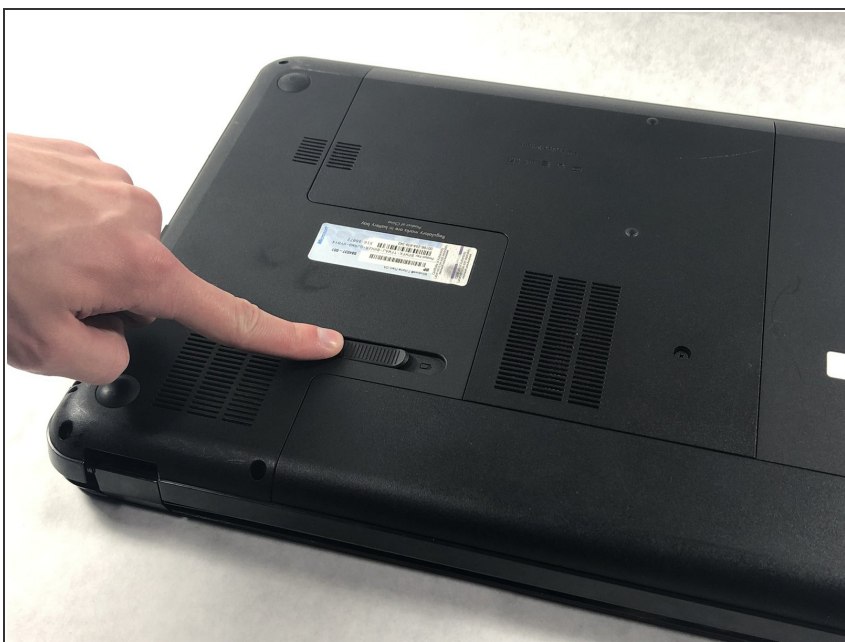
- [Spudger](#) (1)
- [Phillips #0 Screwdriver](#) (1)
- [iFixit Opening Tools](#) (1)
- [Anti-Static Wrist Strap](#) (1)
- [Metal Spudger](#) (1)
- [Phillips #1 Screwdriver](#) (1)





### PARTS:

- [HP Pavilion g7-2023cl Hard Drive](#) (1)

## Step 1 — Battery




 Shut off your device and disconnect the power cord. Disconnect any external devices connected to the device.

- Place your finger on the battery lock slider, press toward the center of the laptop to unlock the battery.
-  The lock will make a click sound letting you know that the battery is unlocked.

## Step 2



- Use your thumb to pry up the edge of the battery and lift it out of the device.
-  When replacing the battery, align the notch on the battery with the battery lock on the device. Gently press down on the battery until you hear the lock click, which signals that the battery is secure.



## Step 3 — Service Door



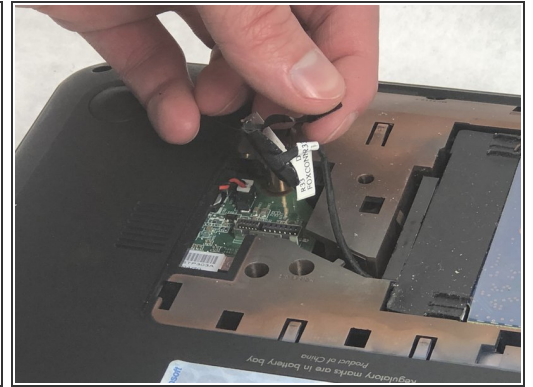
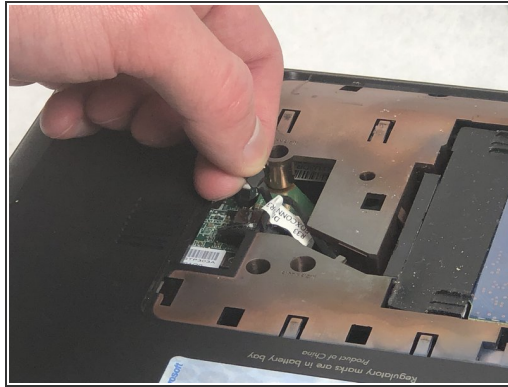
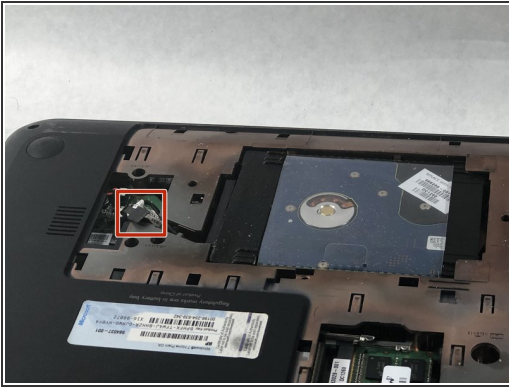
- Using a Phillips #0 screwdriver, loosen the service door screw.
- ⓘ This is a captive screw that will remain attached to the service door.

## Step 4



- Lift the service door up and away from the device.

## Step 5 — Hard Drive



- Locate the hard drive cable connector pull tab.
- Pinch the pull tab pulling upwards from the motherboard to disconnect the hard drive cable.
- ❗ To reconnect the cable, align it so that the cable from the connector is facing the battery and the cable lays in the groove of the base enclosure.

## Step 6



- Use a spudger or other ESD-safe prying tool to lift one side of the hard drive up and out of the base enclosure.
- ❗ You may be able to lift up the hard drive with just your fingers.

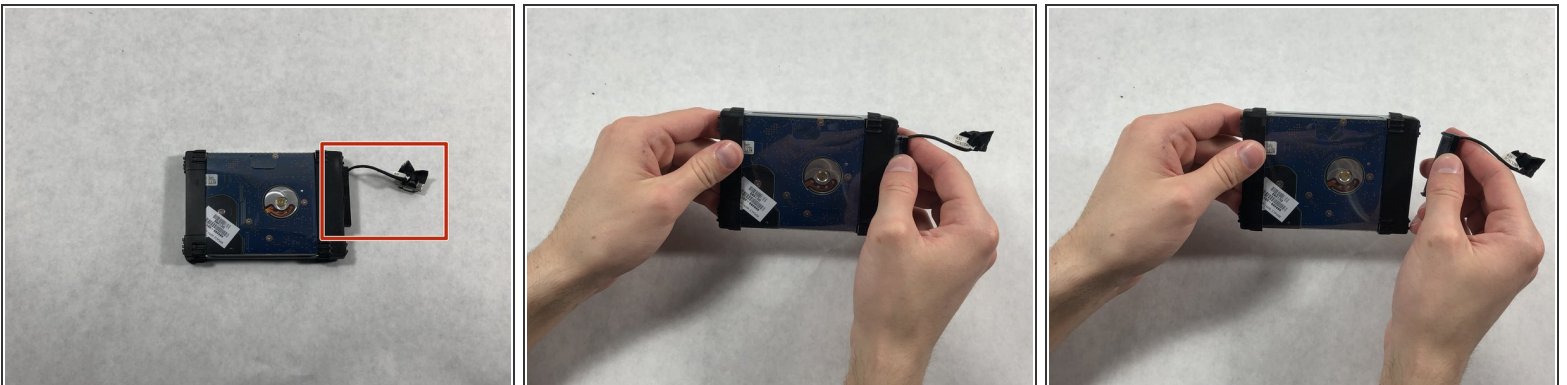


## Step 7



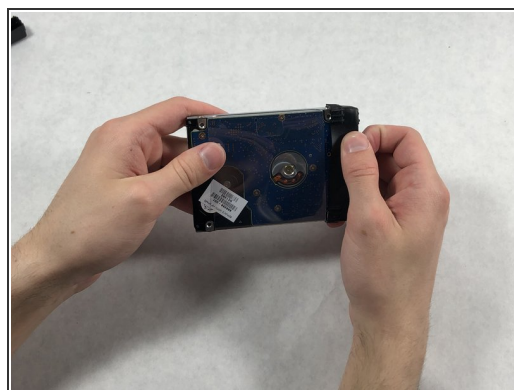
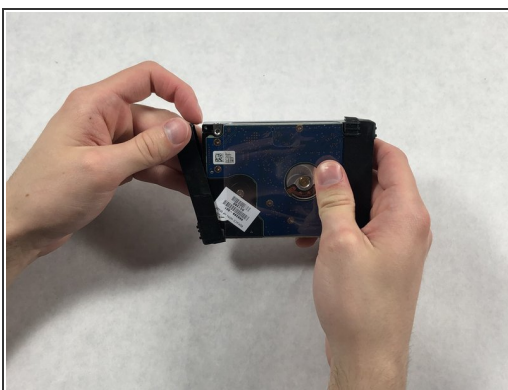
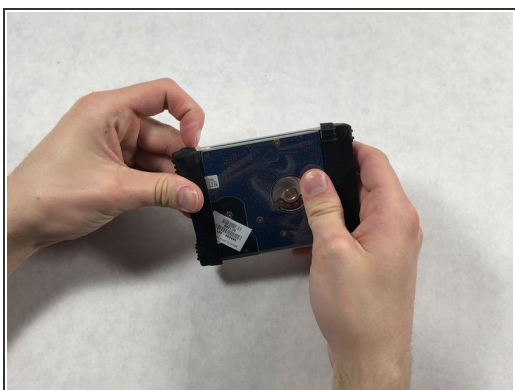
- Grab the end of the hard drive.
- Pull the hard drive out of the base enclosure at an angle.
- ⓘ To replace the hard drive, insert it at the same angle you removed it from and slide it back into the base enclosure until it lays flat.

## Step 8 — Hard Drive Mounting Bracket



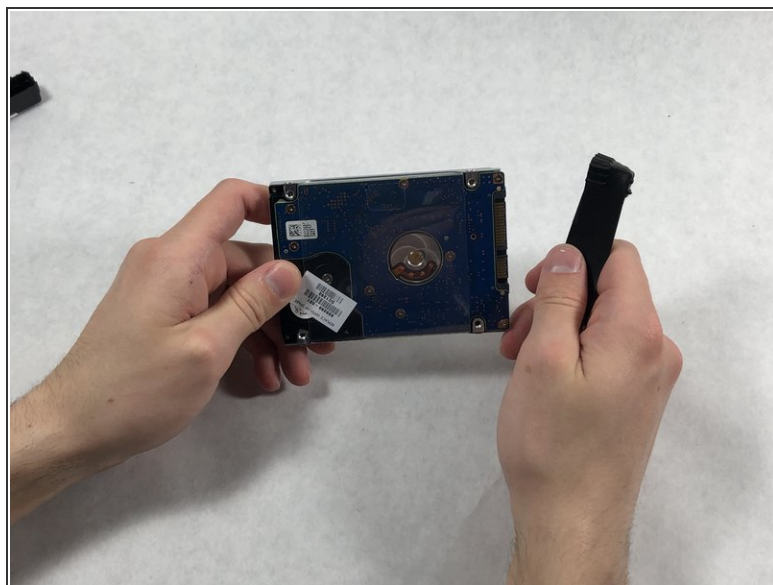
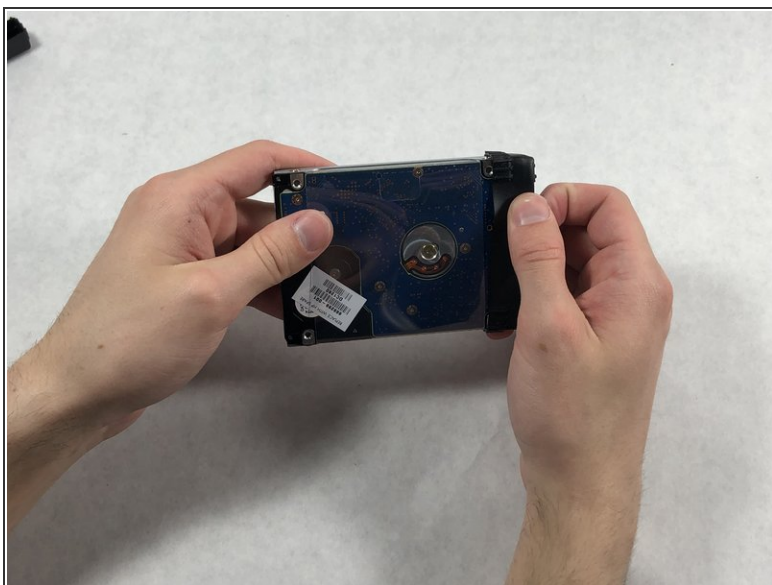
- Locate the hard drive cable.
- Disconnect the hard drive cable.

## Step 9



- Remove the bumper by simply pulling it off with your fingers.

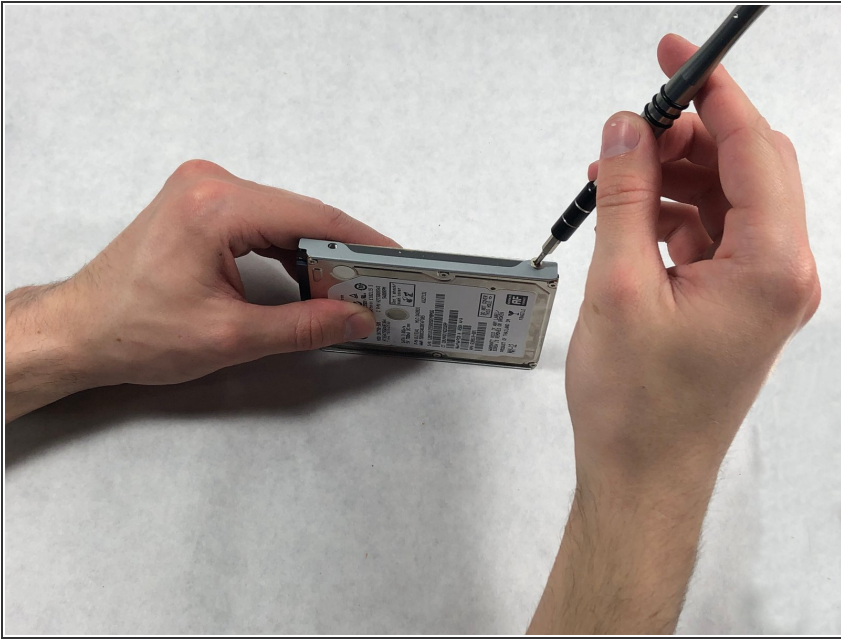
## Step 10



- Remove the other bumper the same way as the last one.

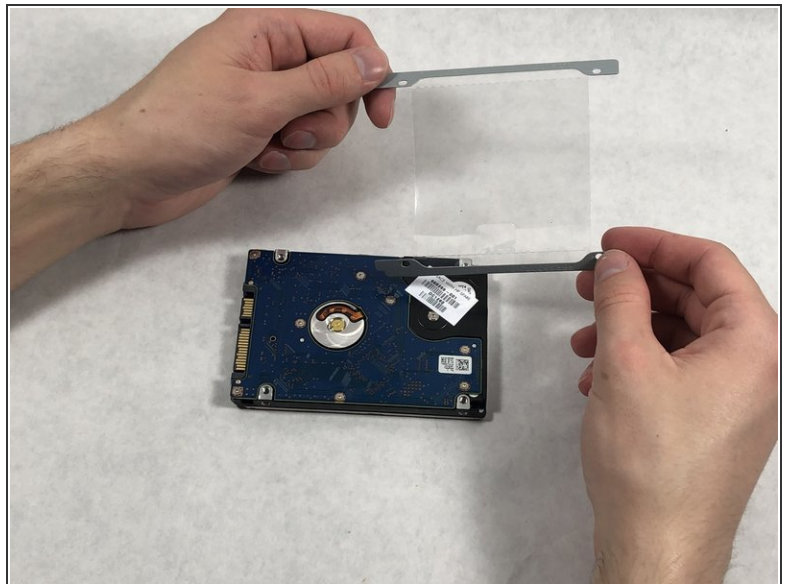
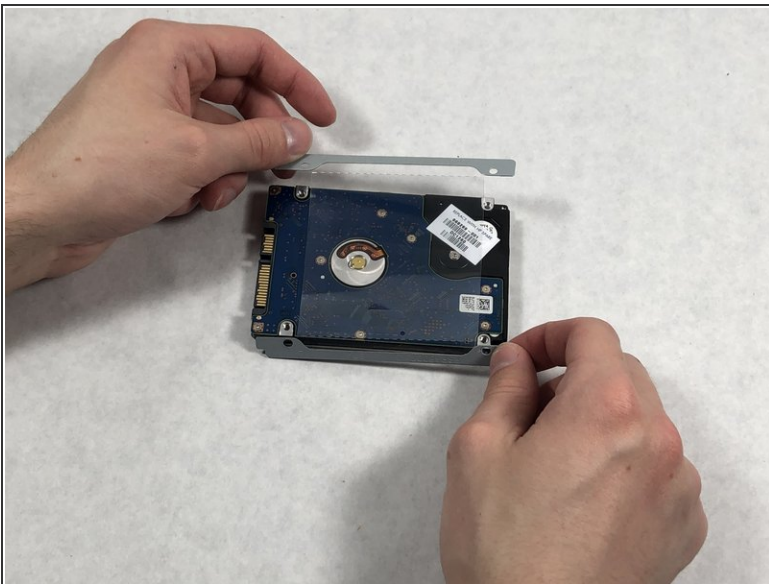


## Step 11



- Using a Phillips #0 screwdriver, remove the four Phillips M3.0×3.5 screws (two on either side of the hard drive).

## Step 12



- Remove the mounting bracket.

To reassemble your device, follow these instructions in reverse order.