



Nikon Coolpix B700 Motherboard Replacement

How to remove the motherboard out of a Nikon Coolpix B700.

Written By: Carlos Salgado



INTRODUCTION

This guide shows how to replace the motherboard and battery housing. This can be replaced if there are any issues with the battery connectivity or the board blows out.

TOOLS:

- [Phillips #0 Screwdriver](#) (1)
 - [Metal Spudger](#) (1)
 - [Tweezers](#) (1)
 - [Soldering Iron](#) (1)
 - [Spudger](#) (1)
 - [iOpener Kit](#) (1)
-

Step 1 — Back Frame Assembly



- Use the Phillips screwdriver to remove the two 5.5 mm screws on the left side of the camera.

Step 2



- Use the Phillips screwdriver to remove seven 5.5 mm screws from the bottom of the camera.

Step 3



- Use the Phillips screwdriver to remove the two 5.5mm screws on the right side of the camera.
- Open the HDMI flap to remove a 5.5mm screw.
- ☑ Don't forget to replace the hidden screw under the HDMI flap during reassembly.

Step 4



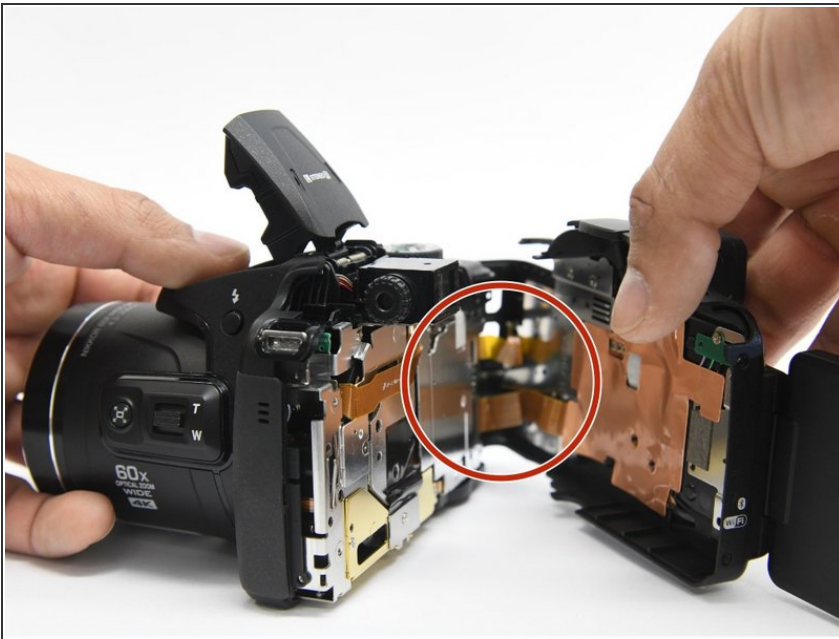
- Use the Phillips screwdriver to remove the two 5.5mm screws under the LCD panel.

Step 5



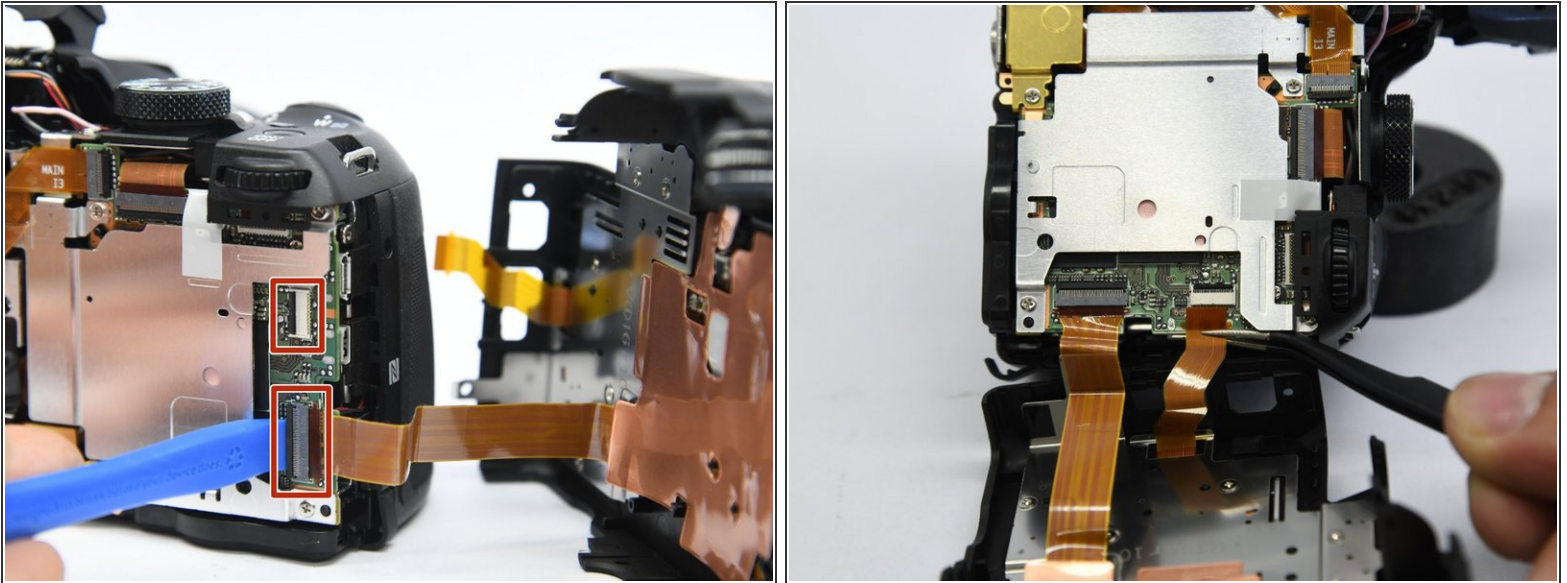
- Open the flash assembly and insert the spudger into the slot under the flash unit and twist.
- While twisting, pry apart the shell to split the camera in half.

Step 6



⚠ Be careful not to damage the ribbons that connect the halves together.

Step 7



- Place the pry tool under the black latch. Lift gently until the latch flips up.
- Gently pull the ribbon away from the latch.

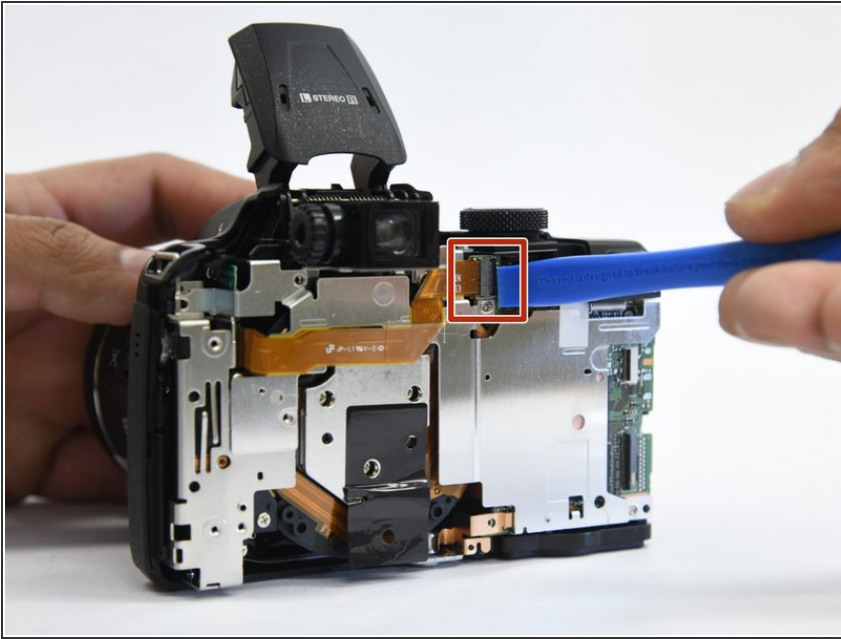
⚠ Be gentle when taking ribbons out and apart because they are fragile.

Step 8 — Internal Bracket



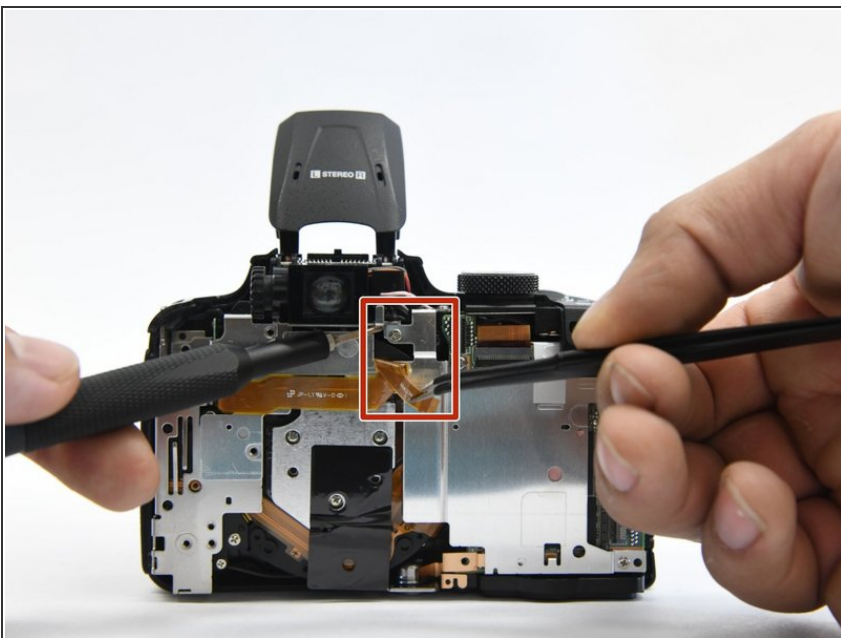
- Use the Phillips screwdriver to remove the remaining five 5.55mm screws.
- Remove the single 6mm screw.

Step 9



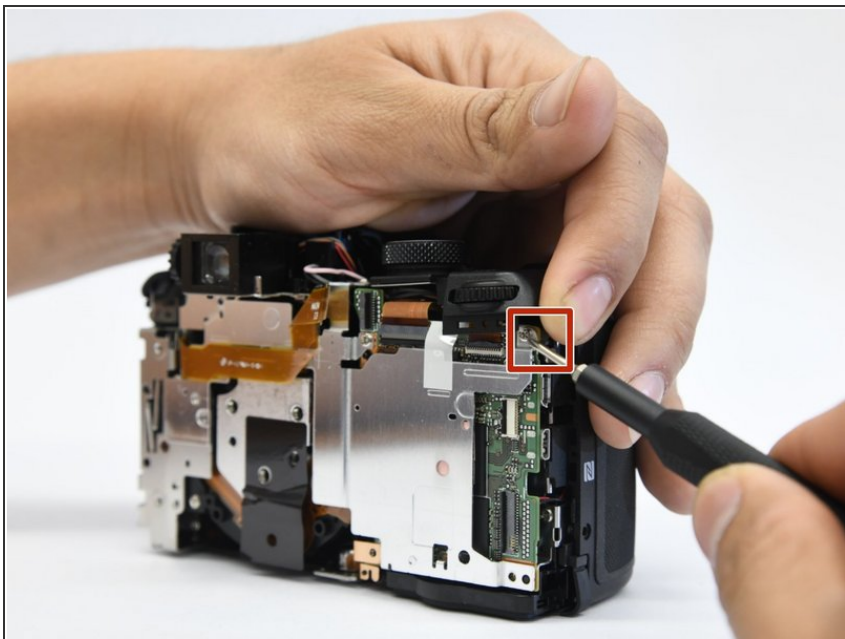
- Insert the pry tool under the latch and gently lift up to remove the ribbon.

Step 10



- Move the ribbon out of the way to reveal the hidden screw.

Step 11



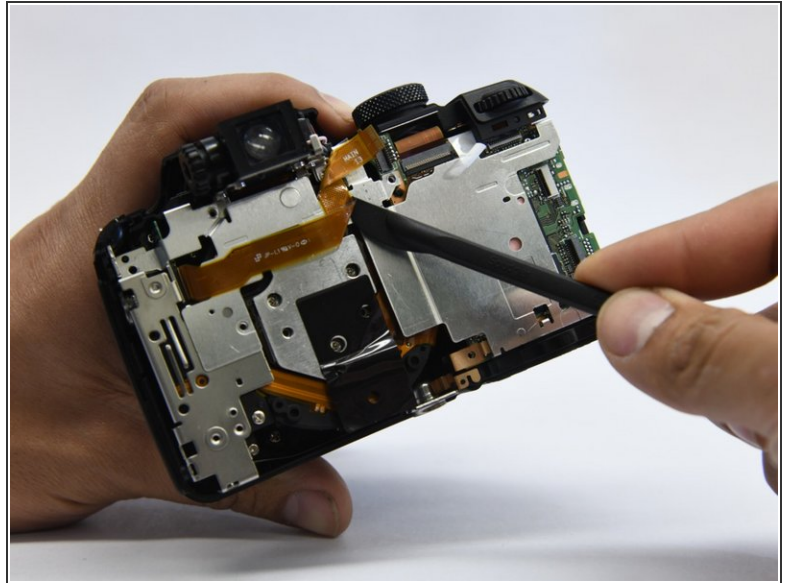
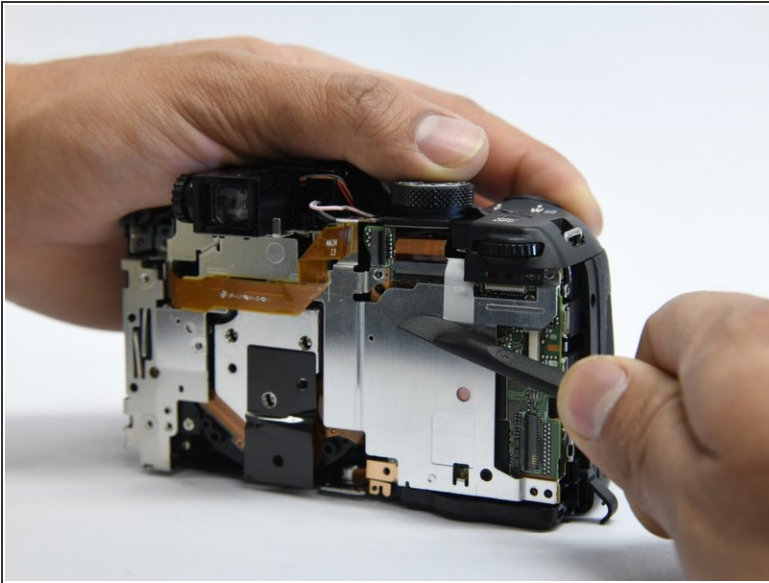
- Lift the button assembly gently to give access to remove the 4mm screw.

Step 12



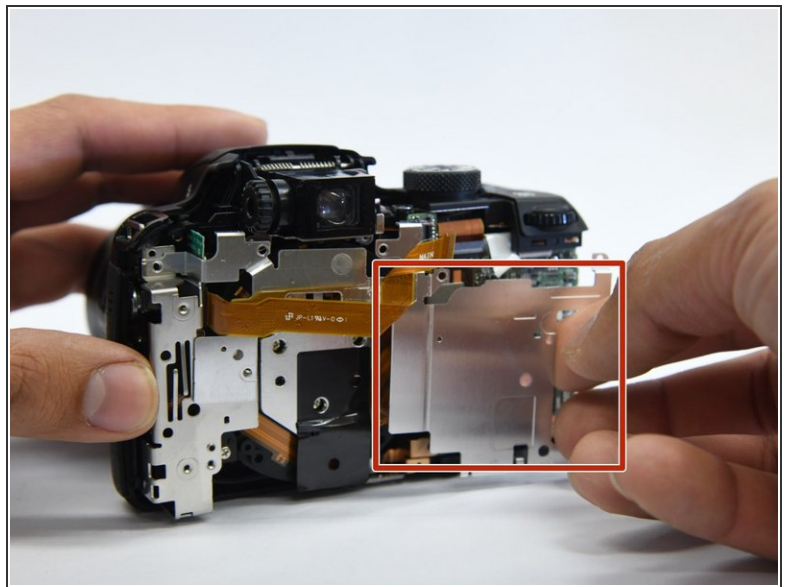
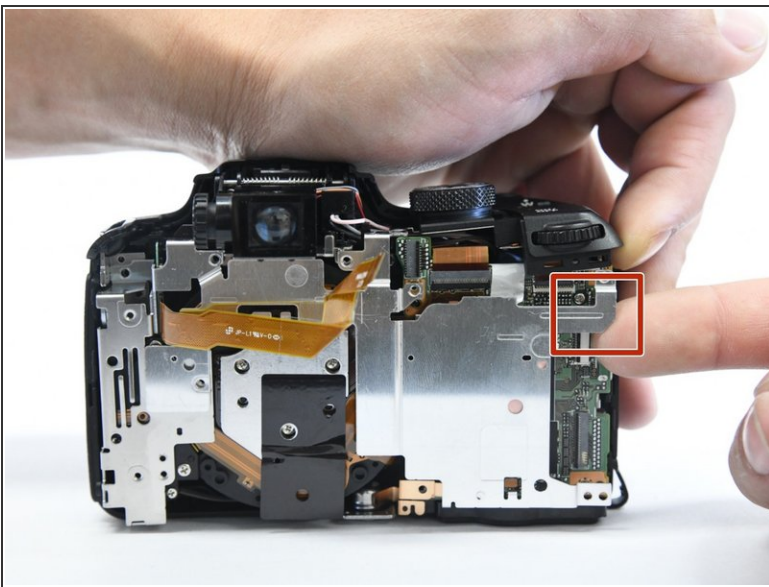
- On the top of the camera, remove the 6mm screw.

Step 13



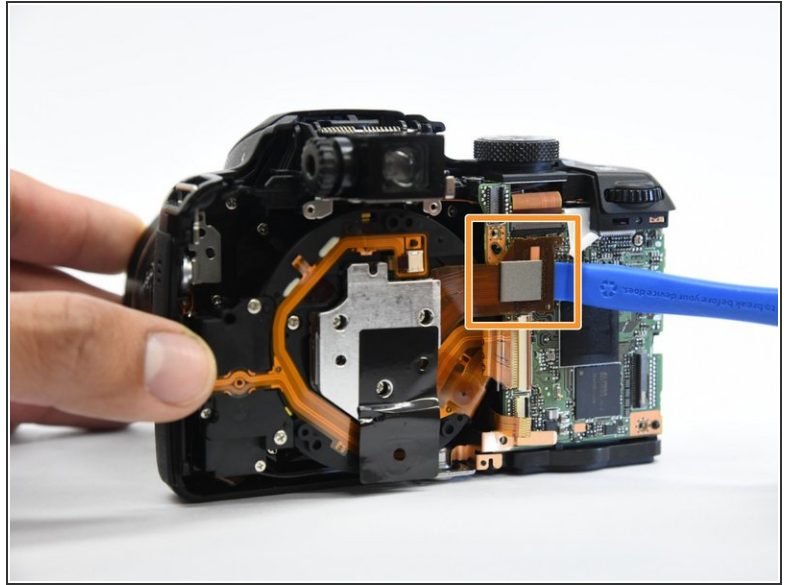
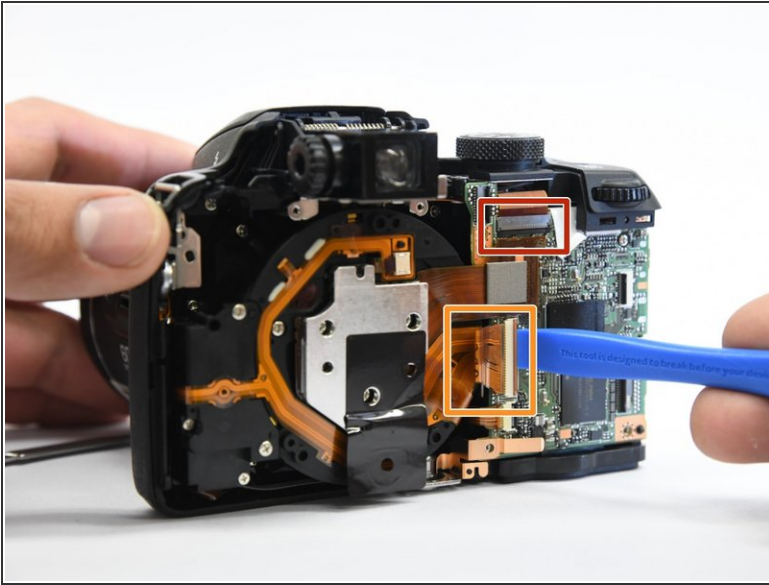
- With the spudger tool gently pry off the white tap holding in the bracket.
- Use the same tool to remove the glued-on ribbon.

Step 14



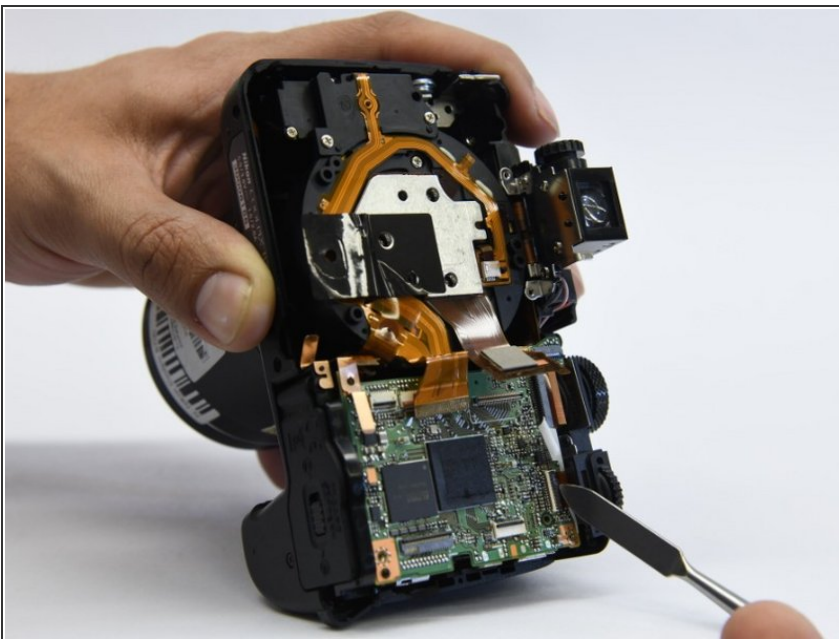
- Gently lift up the button assembly to slide the bracket out.

Step 15



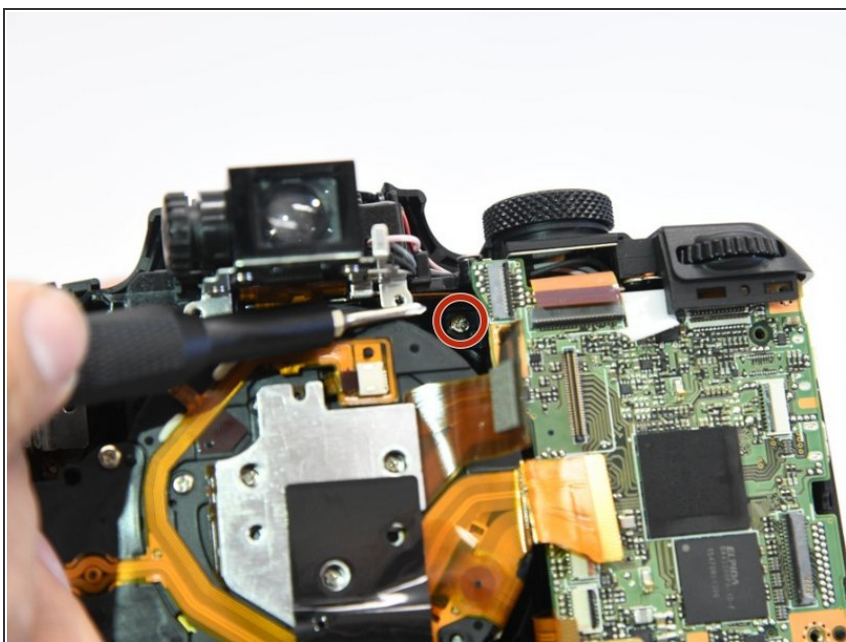
- With the pry tool gently lift up the latch and pull the cable toward the lens assembly.
- Use the pry tool again and place it under the ribbon and lift straight up to disconnect the ribbon.

Step 16 — Motherboard



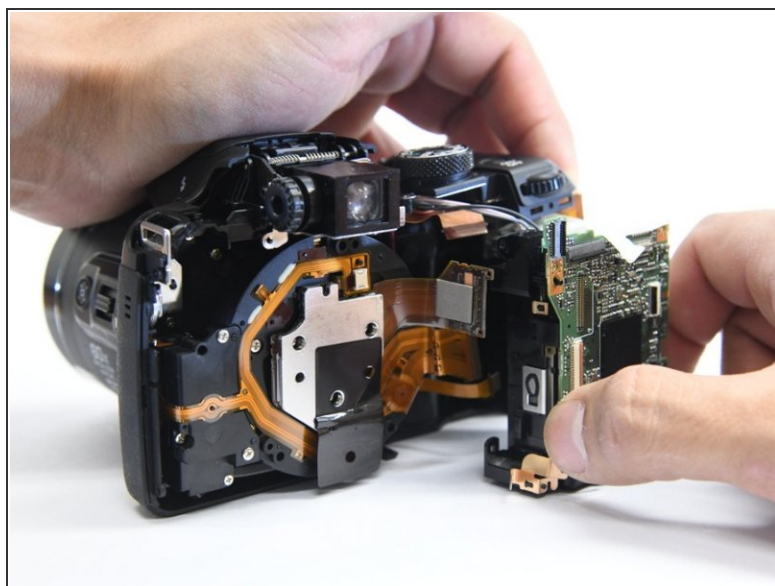
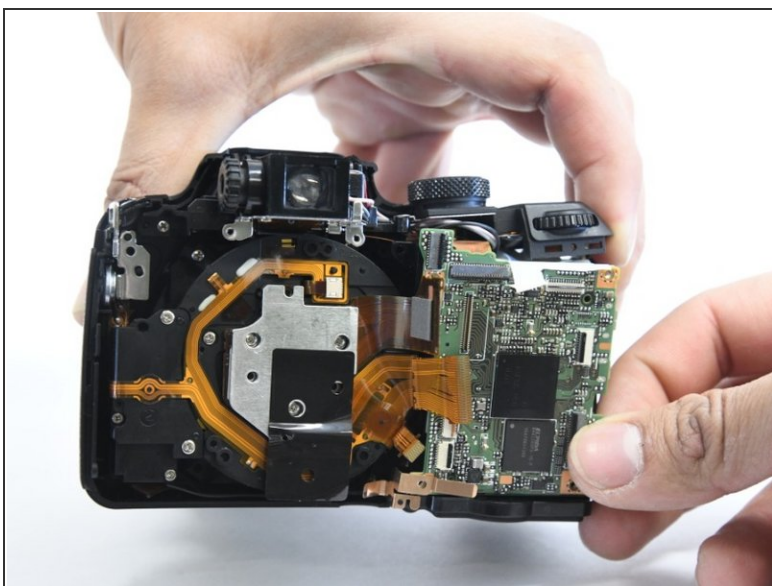
- Use the metal spudger to open the latch to remove the ribbon.

Step 17



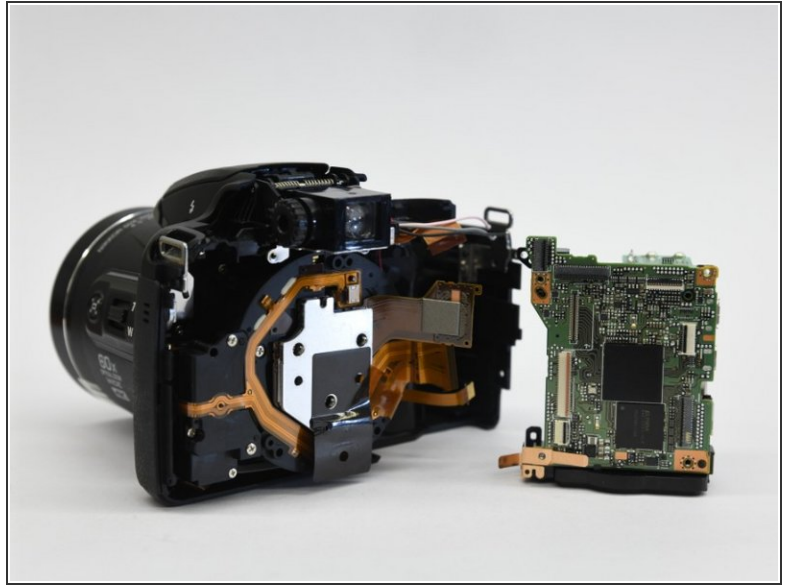
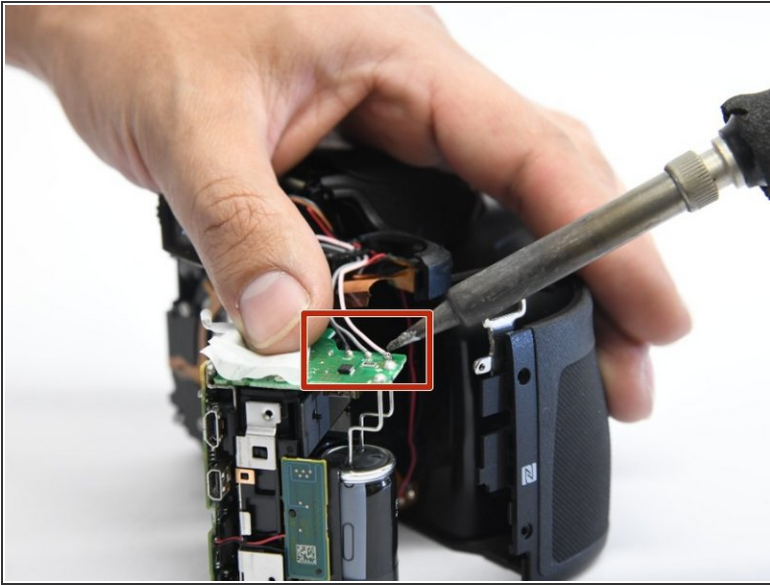
- Use the Phillips screwdriver to remove the single 6 mm screw.

Step 18



- Gently lift the button assembly. Slide the motherboard out from the shell.

Step 19



- Desolder the black, gray, and white wires from the motherboard.

i The motherboard is labeled with the wire colors.

To reassemble your device, follow these instructions in reverse order.