



# Huawei Mate 10 Pro SIM Card Tray Replacement

This guide shows you how to remove the SIM card tray from your Mate 10 Pro.

Written By: Tobias Isakeit



---

## INTRODUCTION

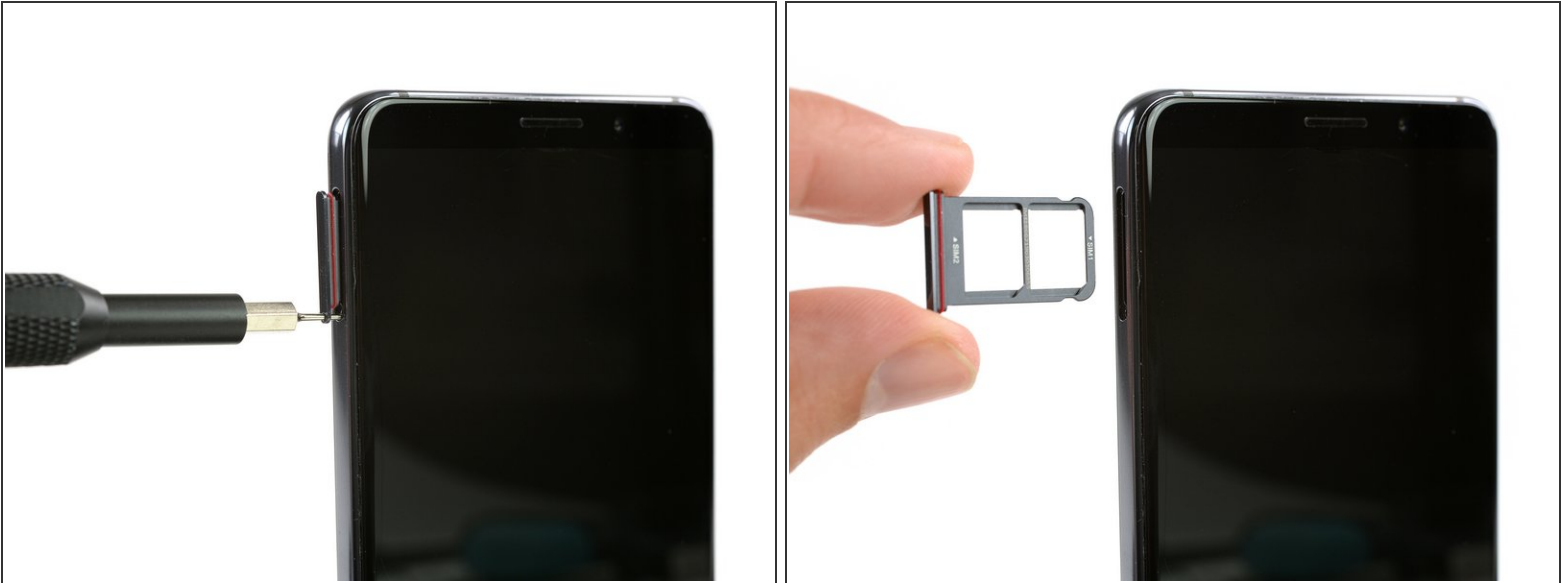
Use this guide to remove the SIM card tray from your Mate 10 Pro.



### TOOLS:

- [SIM Card Eject Tool](#) (1)
-

## Step 1 — SIM Card Tray



- Insert a SIM opening tool in the hole on the left side and push it in.
- Remove the SIM card tray.

To reassemble your device, follow these instructions in reverse order.