



# iomega LDHD250-U Teardown

Written By: Nate Pritzker





## TOOLS:

- [Phillips #0 Screwdriver](#) (1)
-

## Step 1 — Remove Rear Screws



**⚠ Remember to power off and unplug the unit before opening it up!**

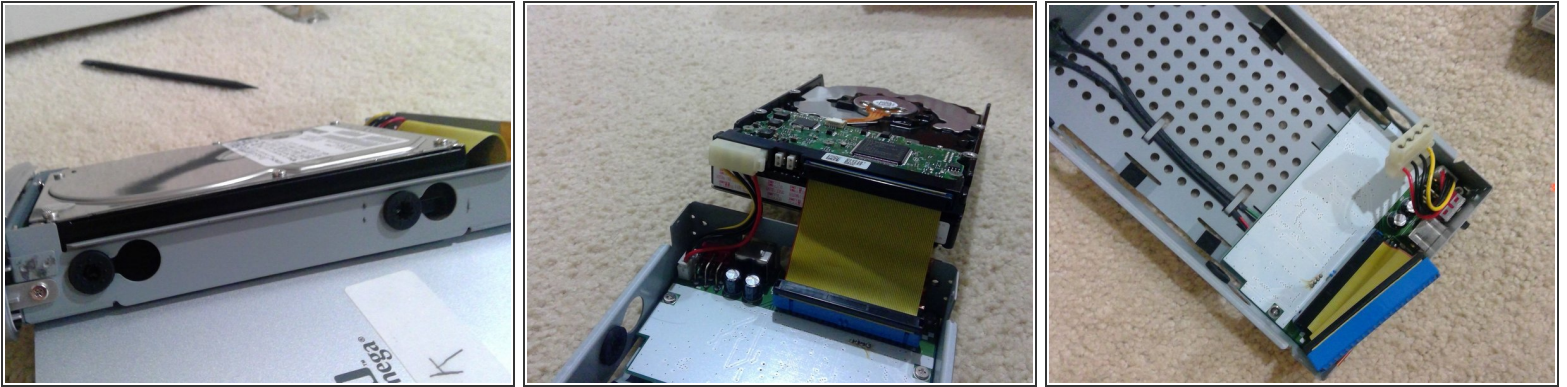
- Remove the two PH #0 Screws

## Step 2 — Removing the cover



- After removing the back part of the unit, slide the front part out.
- Remember to put aside the center part you removed

## Step 3 — Removing the Hard Drive



- There are two ways to remove the Hard Drive
  - 1. Removing the 4 screws on the side of the unit
  - 2. Sliding the HDD back and then releasing it (my unit will not slide back)
- The HDD can now be lifted out, unplugged, and replaced, upgraded, or keep it the same.

⚠ Pull up and unplug as the cables can break if too much force is applied

To reassemble your device, follow these instructions in reverse order.