



# Huawei P20 Pro Rear Glass Replacement

This guide shows how to replace a cracked rear glass of the Huawei P20 Pro.

Written By: Dominik Schnabelrauch



## INTRODUCTION

Use this guide to replace a cracked rear glass of the Huawei P20 Pro.

Opening the Huawei P20 Pro will **damage the waterproof sealing** on the device. If you do not replace the adhesive seals, your phone will **function normally** but will **lose its water-protection**.

You'll need **replacement adhesive** to reattach components when reassembling the device.



### TOOLS:

- [iOpener](#) (1)
  - [Spudger](#) (1)
  - [iFixit Opening Picks set of 6](#) (1)
-

## Step 1 — Rear Glass Replacement



- Switch off your phone.
  - [Use an iOpener](#) to loosen the adhesive beneath the rear glass. Apply the iOpener for at least two minutes. You might want to repeat this step several times during the back cover removal.
- ⓘ The adhesive of the Huawei P20 Pro is of moderate strength, however a hair dryer, heat gun, or hot plate may also be used if you aren't able to open the device with the iOpener. Be careful not to overheat the phone—the OLED display and internal battery are both susceptible to heat damage.

## Step 2



- ⓘ If the phone's rear glass is cracked, a suction cup may not stick very well. Try [lifting it with strong tape](#), or superglue the suction cup in place and allow it to cure so you can proceed.
- Press a suction cup onto the rear glass close to the bottom edge of the phone.
  - Lift the bottom edge with the suction cup, opening a slight gap between the rear glass and the frame.
  - Insert an opening pick in the gap and slide it to the bottom right corner. Leave it there to prevent the adhesive from resealing.

### Step 3



- Insert a second opening pick and slide it to the bottom left corner. Leave it there to prevent the adhesive from resealing.

### Step 4



- Insert a third opening pick at the bottom left corner.
- Slide the tip of the opening pick along the left edge of the phone to cut the adhesive.
- Leave the opening pick in the top left corner of the phone to prevent the adhesive from resealing.

## Step 5



**i** In case you're having trouble to cut the adhesive, reapply the iOpener for another minute to loosen it.


- Insert a fourth opening pick at the top left corner of the phone.
- Slide the opening pick along the upper edge of the phone to cut the adhesive beneath the rear glass and leave it in the top right corner.



## Step 6



- Insert a fifth opening pick at the top right corner of the rear glass.
- Slide the opening pick along the right edge of the phone to cut the remaining adhesive.

 Don't open the phone all the way yet. The proximity sensor flex cable is still connected to the motherboard.

## Step 7



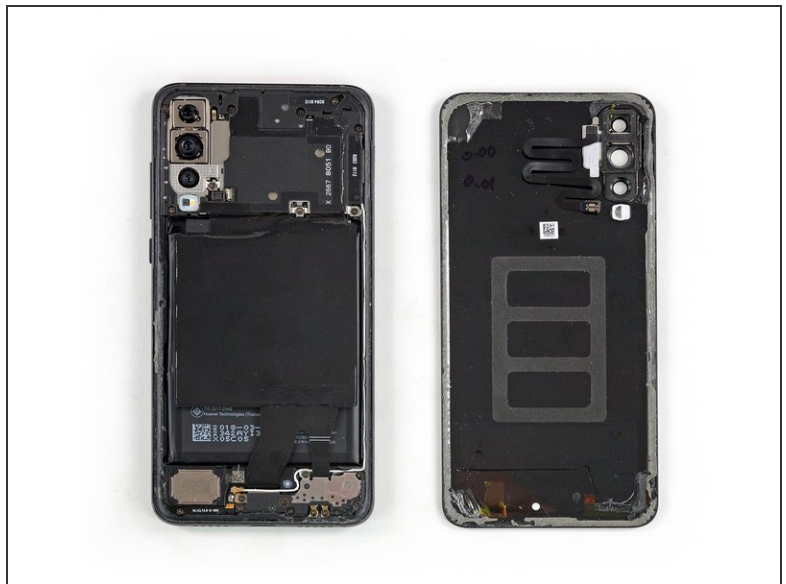
- Carefully lift the rear glass until you can reach the connector of the proximity sensor flex cable next to the rear camera assembly.

## Step 8



- Use the flat end of a spudger to pry up and disconnect the proximity sensor flex cable.

## Step 9



- Remove the rear glass.
- ☑ Before installing fresh adhesive and reassembly, remove any remaining adhesive from the phone, and clean the glued areas with isopropyl alcohol and a lint-free cloth.



To reassemble your device, follow these instructions in reverse order.

After installing the rear glass, apply strong, steady pressure to your phone for several minutes to **help the adhesive form a good bond**, such as by placing it under a stack of heavy books.