



# iPad Mini CDMA Wi-Fi/Bluetooth Antenna Replacement

Prereq for removing the logic board. Battery has been removed.

Written By: Walter Galan



---

## INTRODUCTION

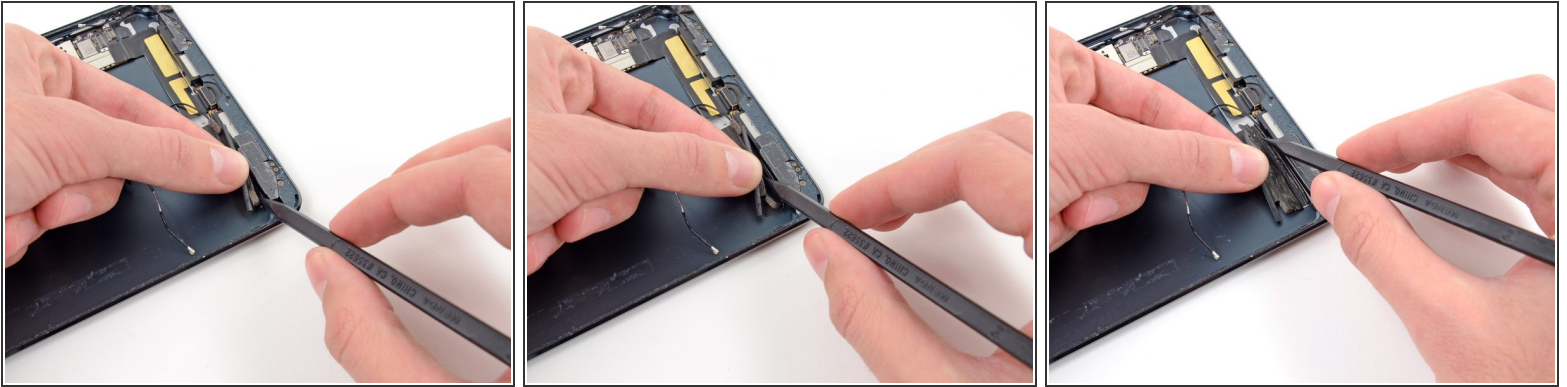
Prereq for removing the logic board. Battery has been removed.



### TOOLS:

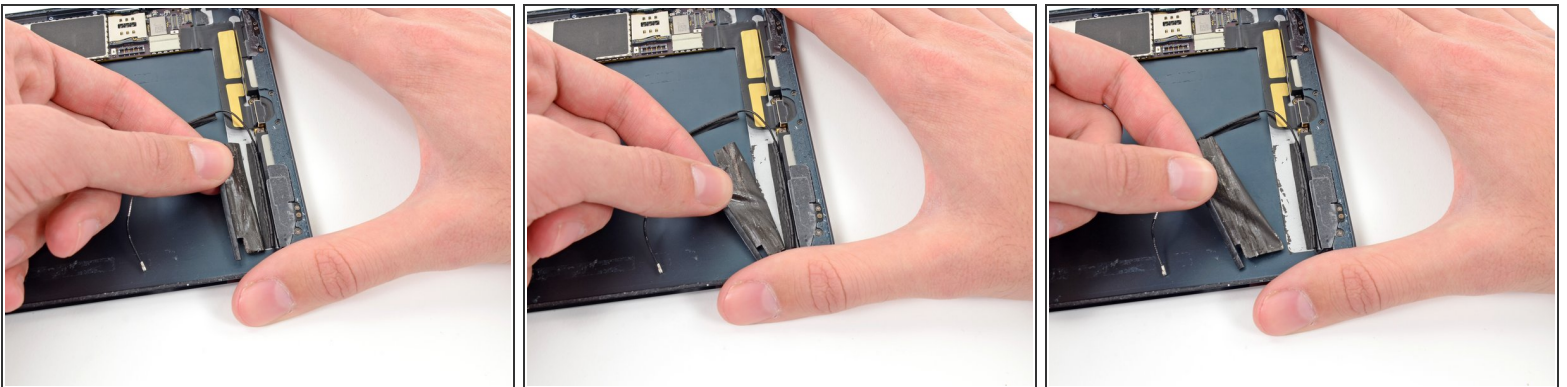
- [Spudger](#) (1)
  - [Phillips #00 Screwdriver](#) (1)
-

## Step 1 — Wi-Fi/Bluetooth Antenna



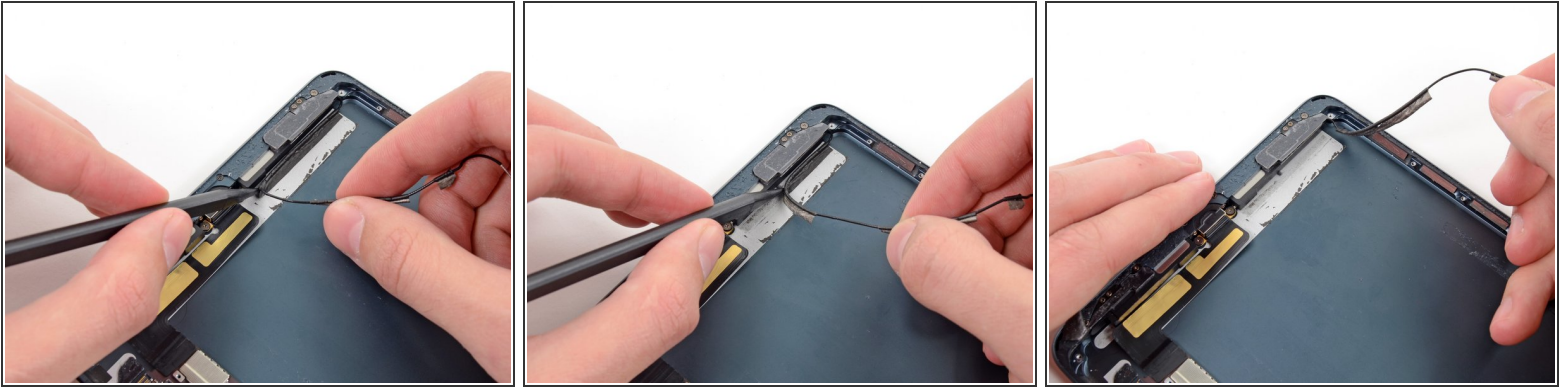
- Pull the wide tape toward the top of the iPad, applying constant force to release it from the antenna cable between it and the speaker.
- Slide the tip of a spudger through the gap between the wide tape and the antenna cable, breaking the adhesive connecting the two.
- Continue pulling the wide tape until it is no longer covering the antenna cable.

## Step 2



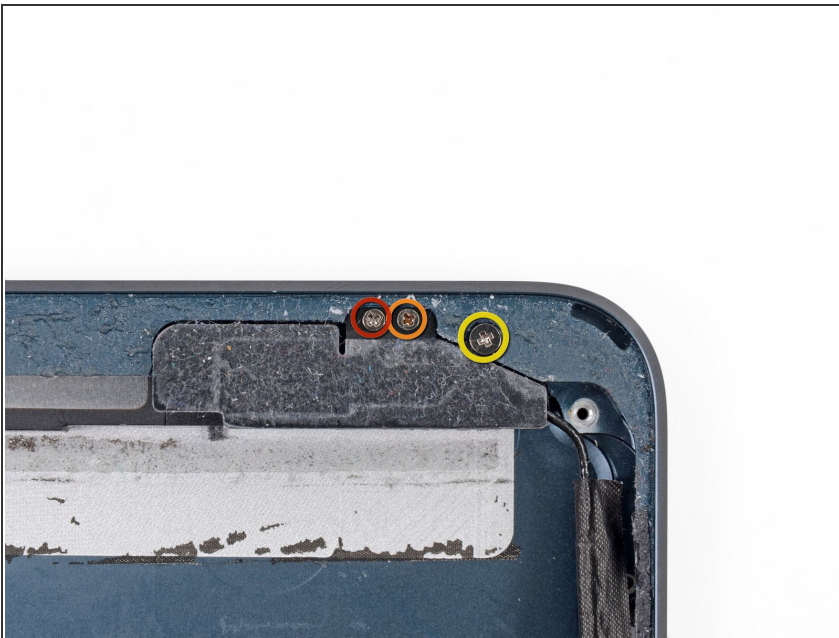
- Peel back and remove the wide tape from the iPad.

### Step 3



- Use the tip of a spudger to pry the antenna cable tape up from the rear case of the iPad.
- Gently pull the antenna cable out of the way as you work along the piece of tape, to keep it from resealing.

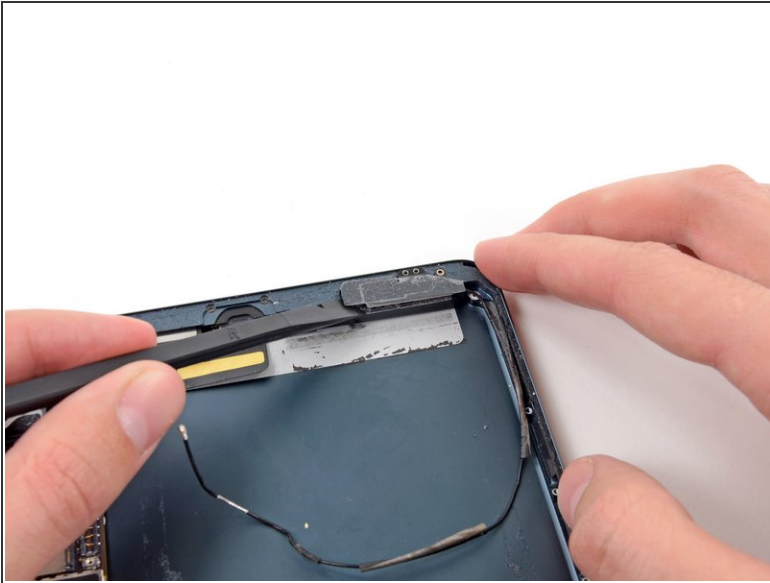
### Step 4



- Remove the following three screws securing the bottom left antenna to the rear case:
  - One 1.2 mm Phillips #00 screw.
  - One 1.1 mm Phillips #00 screw.
  - One 2.5 mm Phillips #00 screw.

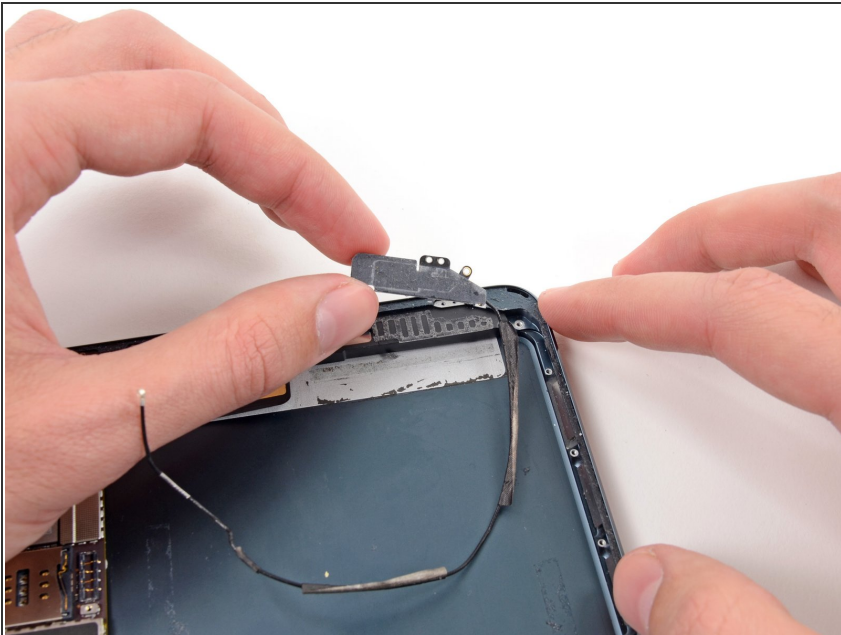


## Step 5



- Use the flat end of a spudger to loosen the foam adhesive securing the lower left antenna to the left speaker.

## Step 6



- Remove the antenna from the iPad.

To reassemble your device, follow these instructions in reverse order.

This document was generated on 2020-11-28 02:45:30 AM (MST).

