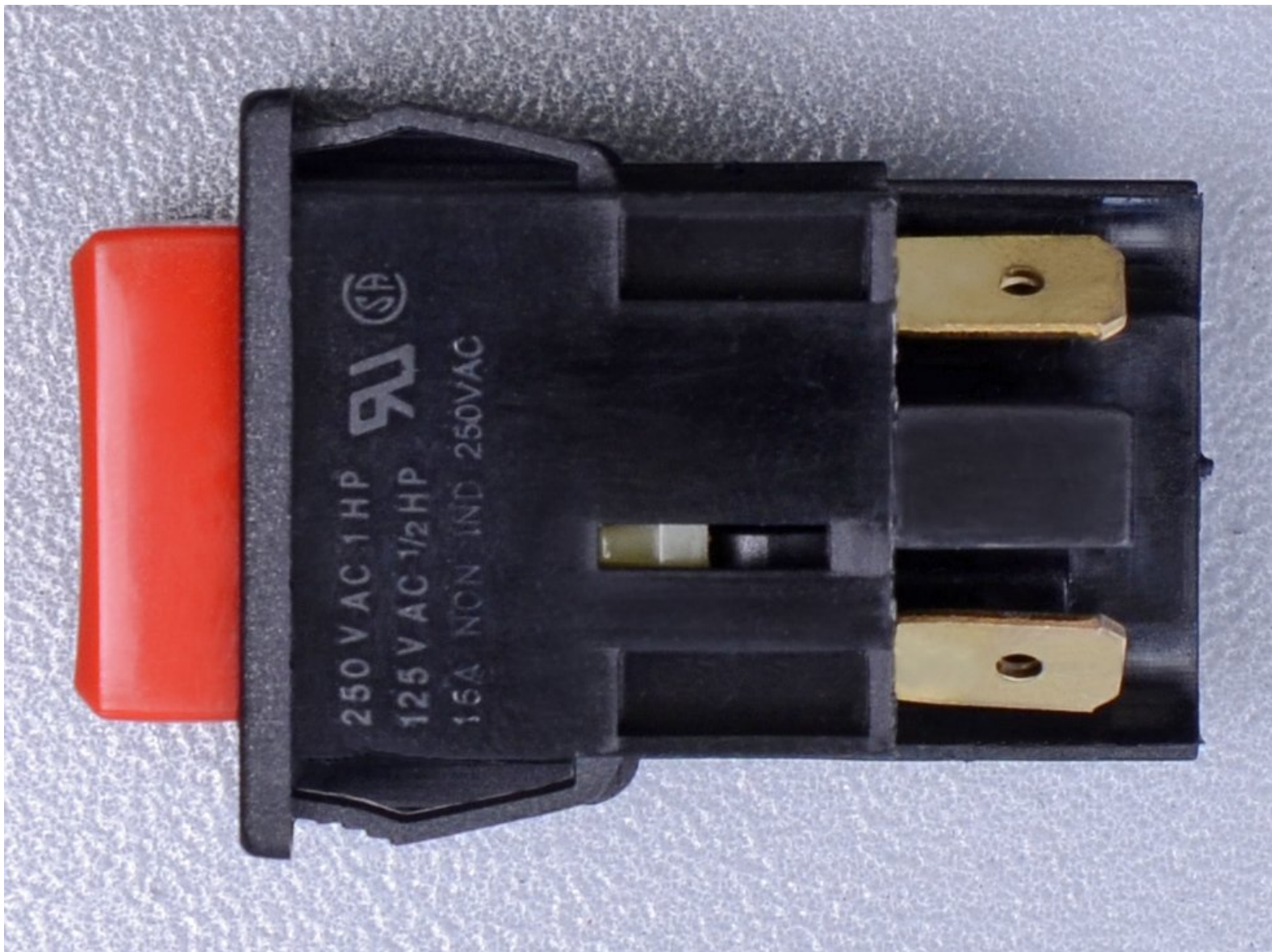




# Rug Doctor Spray Button Replacement

Follow this guide to remove and replace the spray button for the Rug Doctor.

Written By: Arthur Shi



## INTRODUCTION

This guide shows how to remove and replace the spray button on a Rug Doctor. The handle must be detached from the body and opened up in order to remove the button.



### TOOLS:

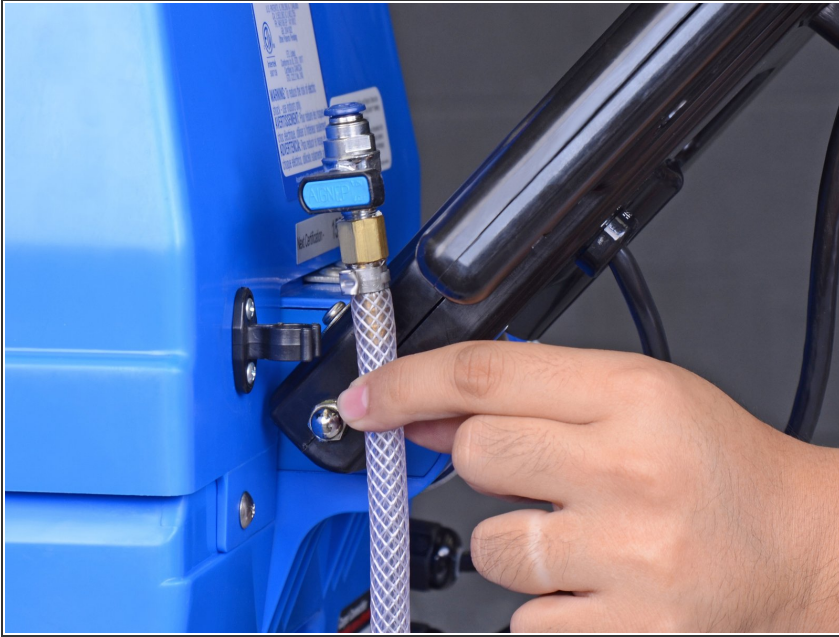
- [7/16" Socket](#) (1)
- [3/8" Socket](#) (1)
- [7/16 Crescent Wrench](#) (1)
- [Slip Joint Pliers](#) (1)
- [Phillips #1 Screwdriver](#) (1)
- [Phillips #2 Screwdriver](#) (1)
- [Flathead 3/32" or 2.5 mm Screwdriver](#) (1)



### PARTS:

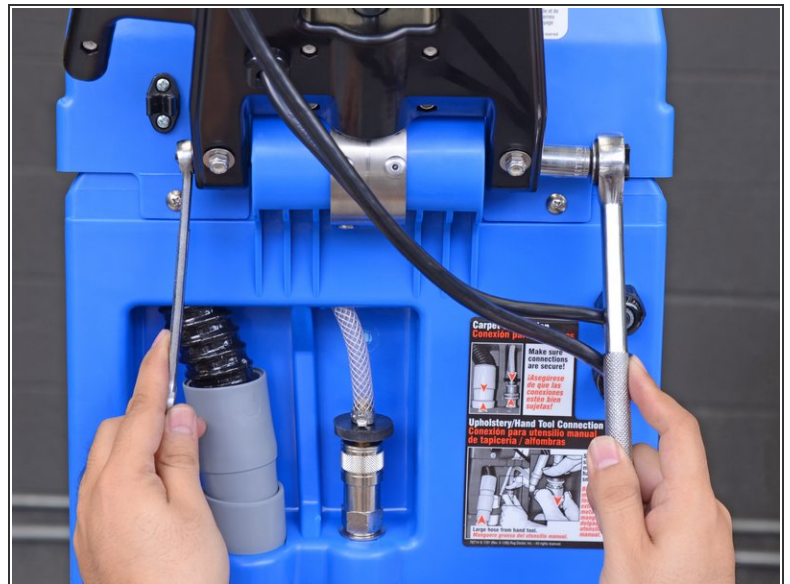
- [Rug Doctor Spray Switch 51160](#) (1)

## Step 1 — Handle



- ❗ Before you begin disassembly, make sure that the Rug Doctor is not plugged in and that all reservoirs are empty of liquids.
- Unclip the clear hose from the back of the Rug Doctor.

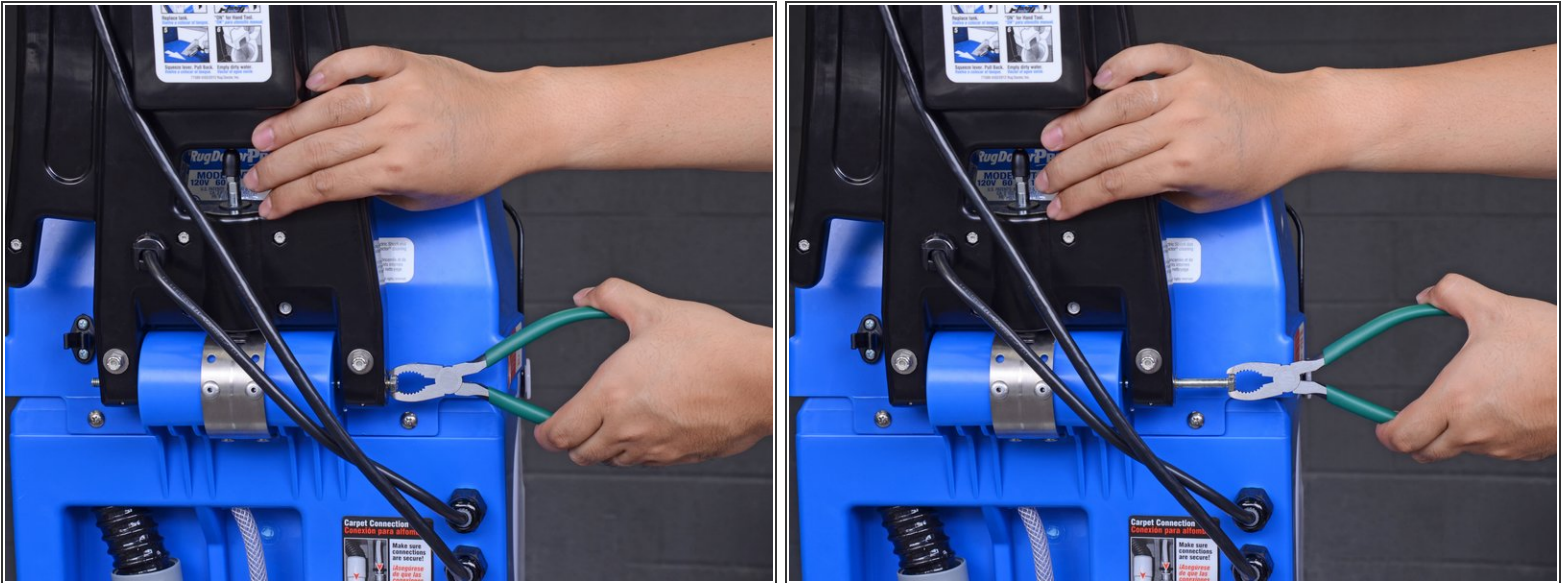
## Step 2



- Use a 7/16" (11 mm OK) wrench to hold the handle axle while you use a 7/16" socket to remove the cap nut securing the axle end.



### Step 3



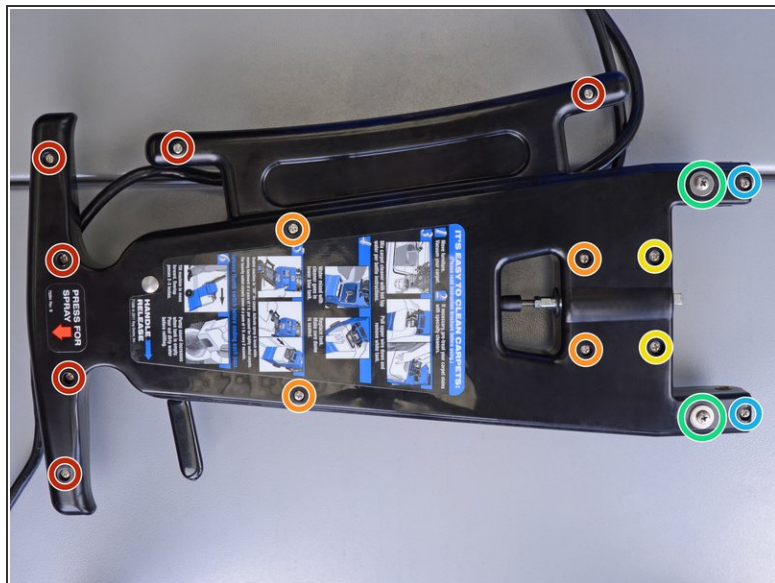
- Support the handle with one hand. It will be loose after this step.
- Use fingers or pliers to pull out the handle axle.
- ⓘ If the axle feels hard to pull out, squeeze the handle release lever to release pressure on the axle.

### Step 4



- Detach the handle from the Rug Doctor and set it down.
- ⓘ If you need more cable slack, you can set the Rug Doctor on its side.

## Step 5 — Spray Button



- Uncoil the power cable from the handle.
- Remove the sixteen Phillips fasteners of the following lengths:
  - Six 22.7 mm machine screws
  - Four 35.3 mm machine screws
  - Two 25.2 mm (thicker) machine screws
  - Two 48.4 mm bolts with washers
  - ☞ When reinstalling these, the order should be: bolt, washer, handle, washer, 3/8" nut.
  - Two 30.1 mm screws

## Step 6




- Separate the bottom edge of the handle slightly until the spring-loaded plunger pops out of its socket.



## Step 7



 **Re-assembly tip**—Follow this step to re-seat the plunger.

- Use your fingers to push the black plunger down towards the bottom of the handle into position. This may take significant force.
- Once the plunger slips into position, squeeze the the two handle halves together.
  - ⓘ If done correctly, the handle should close tightly without a gap and lock the plunger in place.
  - If that doesn't happen, check to see if the plunger is properly positioned, and that no wires are pinched.
- Continue squeezing the two handle halves together while you reinstall the handle's lower screws.

## Step 8



- Remove the two 11.4 mm long Phillips screws holding the cover plate on the handle.
- Remove the cover plate.

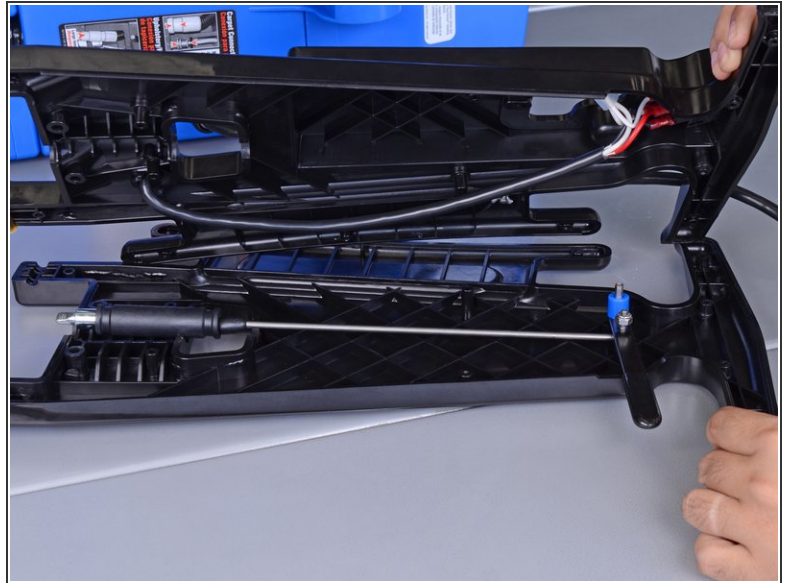
## Step 9



- Use a pair of pliers to grasp the lip of the screw post close to the handle release lever.
- While gripping the screw post, use a large flathead screwdriver to remove the machine screw mated to the other end of the screw post.

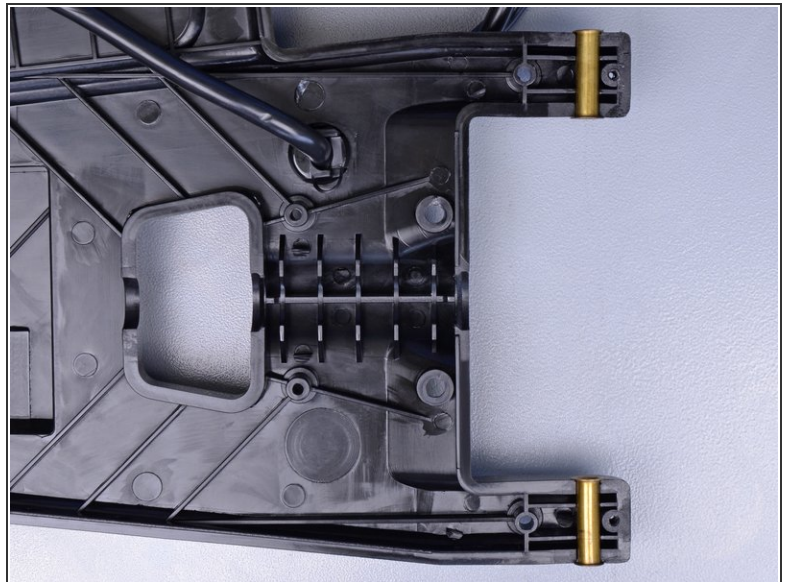
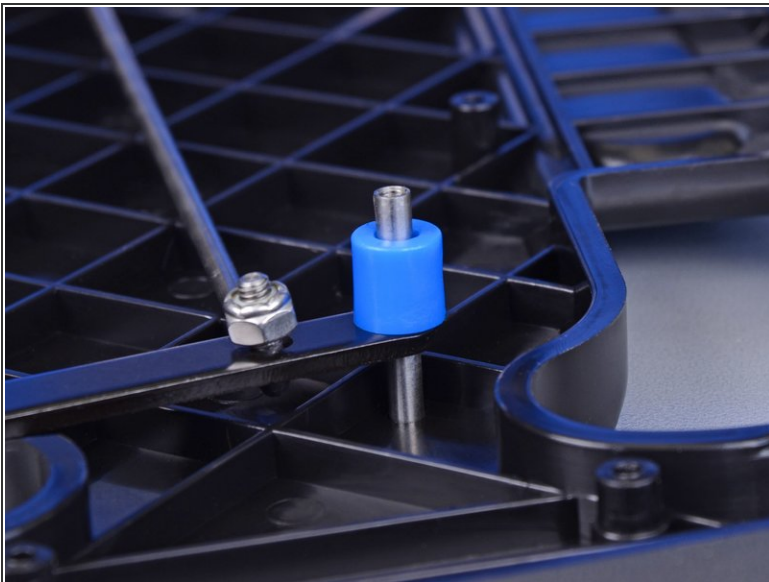


## Step 10



- Pull the two handle halves apart.


## Step 11



- ✦ **Re-assembly tip**—Before you close the handle, check the following:
- The lever mechanism components are properly stacked and oriented as shown.
  - Both brass bushings are in their sockets.

## Step 12




 Note how the switch is wired:

- Red and black wires on the top sockets (order does not matter)
- Two white wires on the bottom sockets
- Use fingers or pliers to wiggle and pull the four connectors from the switch module.

## Step 13



- Use fingers or wide pliers to squeeze the black retainer tabs on each side of the button module.
- While squeezing, wiggle and push the button module out of the front of the handle.
- Remove the button module.

 To install a replacement button, push the button in through the top of the handle until it clicks in place. It should not be loose or easily budged.

To reassemble your device, follow these instructions in reverse order while noting the re-assembly tips.