



Google Pixel 3a Plastic Midframe Replacement

Prerequisite guide only! This guide shows how to remove the plastic midframe for the Pixel 3a.

Written By: Arthur Shi



INTRODUCTION

Prerequisite guide only! This guide is part of an another procedure and is not meant to be used alone.

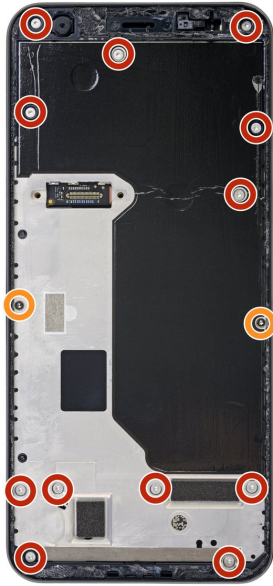
This guide shows how to remove the clipped and screwed on plastic midframe for the pixel 3a.



TOOLS:

- [T3 Torx Screwdriver](#) (1)
 - [iFixit Opening Picks \(Set of 6\)](#) (1)
 - [Spudger](#) (1)
-

Step 1 — Plastic Midframe

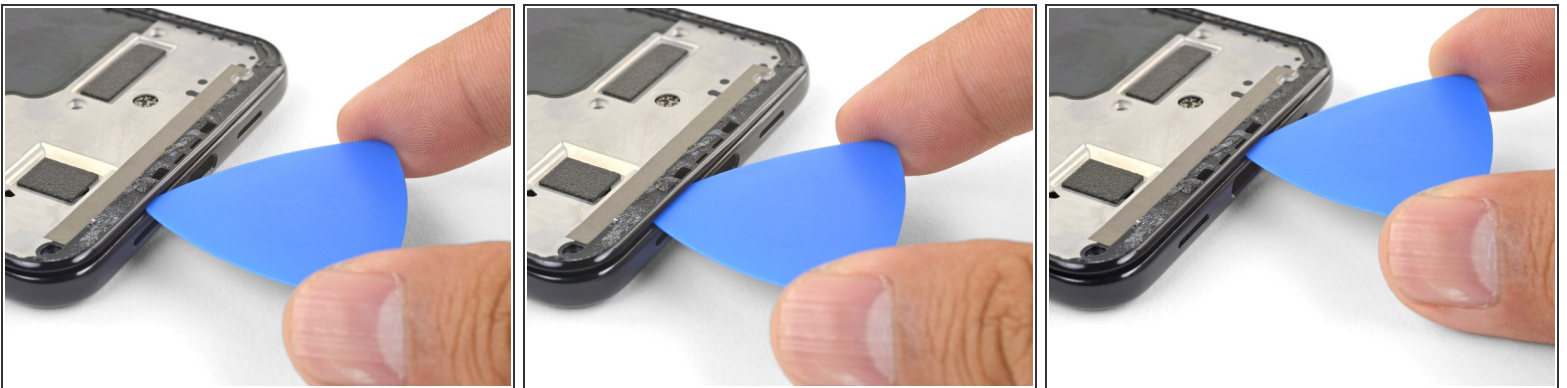


- Remove the fourteen T3 screws of the following lengths securing the plastic midframe:

- Twelve 4.3 mm silver T3 screws
- Two 4.3 mm black T3 screws

☑ Throughout this repair, [keep track of each screw](#) and make sure it goes back exactly where it came from.

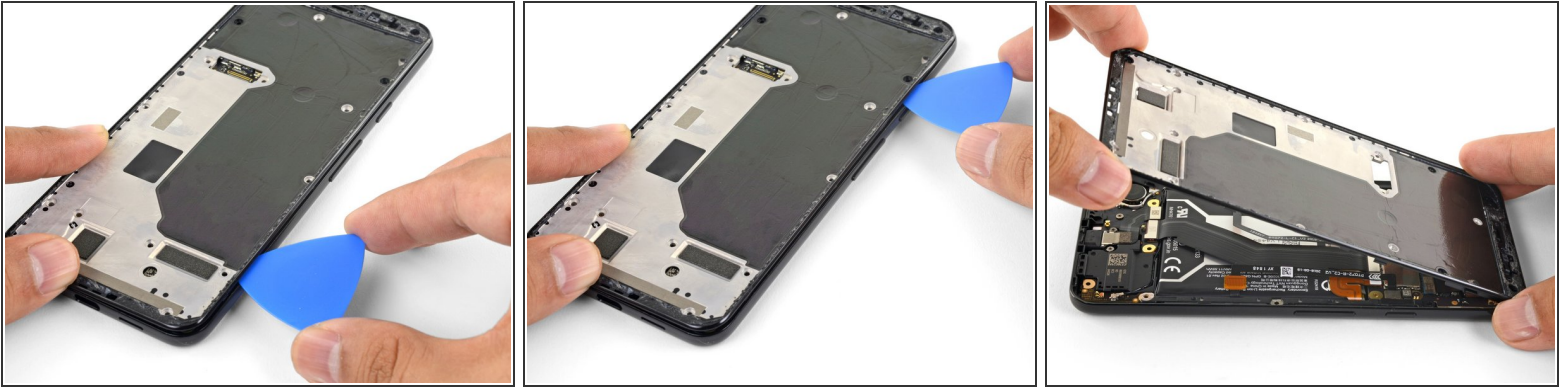
Step 2



i The midframe is still held in place by plastic clips.

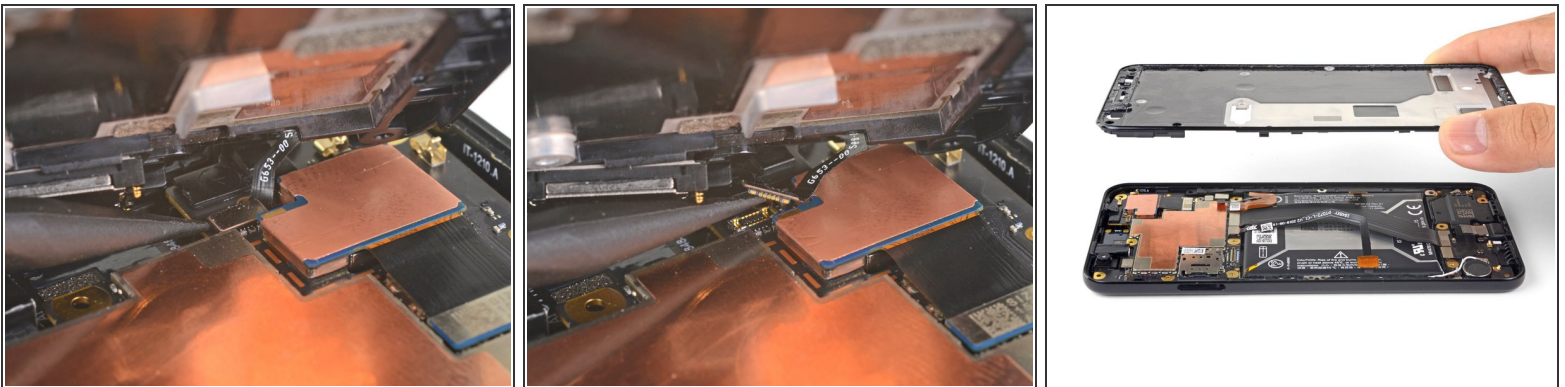
- Insert an opening pick into frame seam at the bottom of the phone. This seam sits between the plastic midframe and the back cover.
- Slide the pick along the seam to release the clips holding the plastic midframe.

Step 3



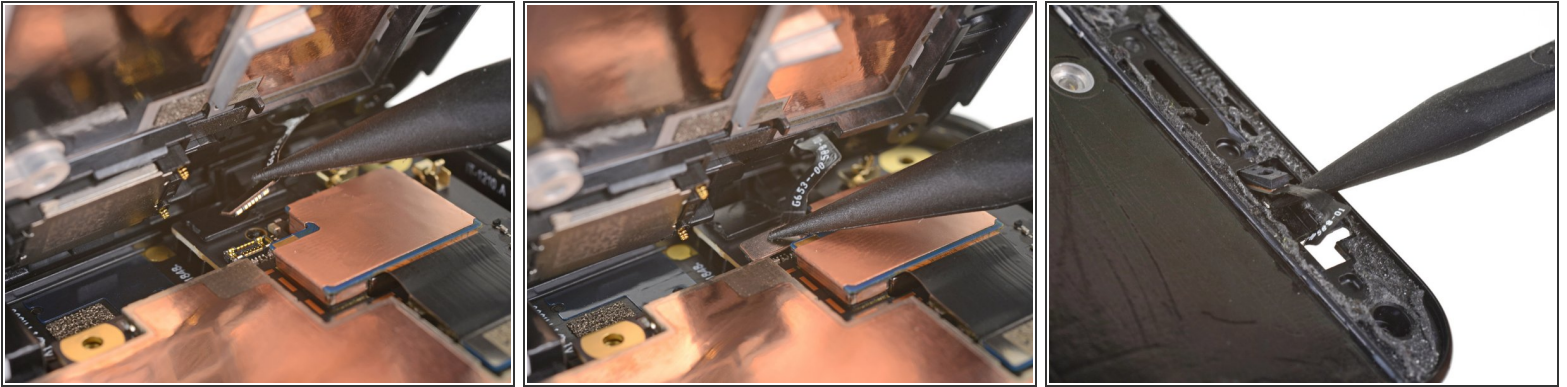
- Slide the opening pick along the left and right edges of the phone to release the midframe clips.
 - Lift the bottom edge of the plastic midframe up but **do not remove the midframe**. The midframe is still tethered to the phone by the fragile proximity sensor cable at the top edge.
- ☒ To reinstall the plastic midframe, align the midframe to the back cover, and [squeeze the perimeter of the phone with your fingers](#) to snap the clips back into position.

Step 4



- Use the point of a spudger to carefully pry up and disconnect the proximity sensor connector from the motherboard.
- ☒ Your proximity sensor connector may have automatically disconnected itself when you lifted the midframe.
- Remove the plastic midframe.

Step 5



✦ This step shows how to reconnect the proximity sensor during re-assembly.

- Align the top edge of the plastic midframe with the phone.
- Use the point of a spudger to carefully align and push the proximity sensor connector onto the motherboard socket.
 - This takes a bit of patience and finesse. Once you have the connector in place, you can also use a finger to gently press the connector onto the socket.
- ❗ Alternatively, you can remove the proximity sensor from the midframe to reattach it to the motherboard first.
 - Use the point of a spudger to carefully pry the proximity sensor out of its recess on the midframe. The sensor is lightly adhered to the midframe.
 - Remove the sensor from the midframe. [Attach the sensor connector onto its motherboard socket.](#)
 - [Thread the sensor cable through the midframe](#) and reposition the sensor in the recess. Press down with your finger to adhere the sensor back onto the midframe.

To reassemble your device, follow these instructions in reverse order.