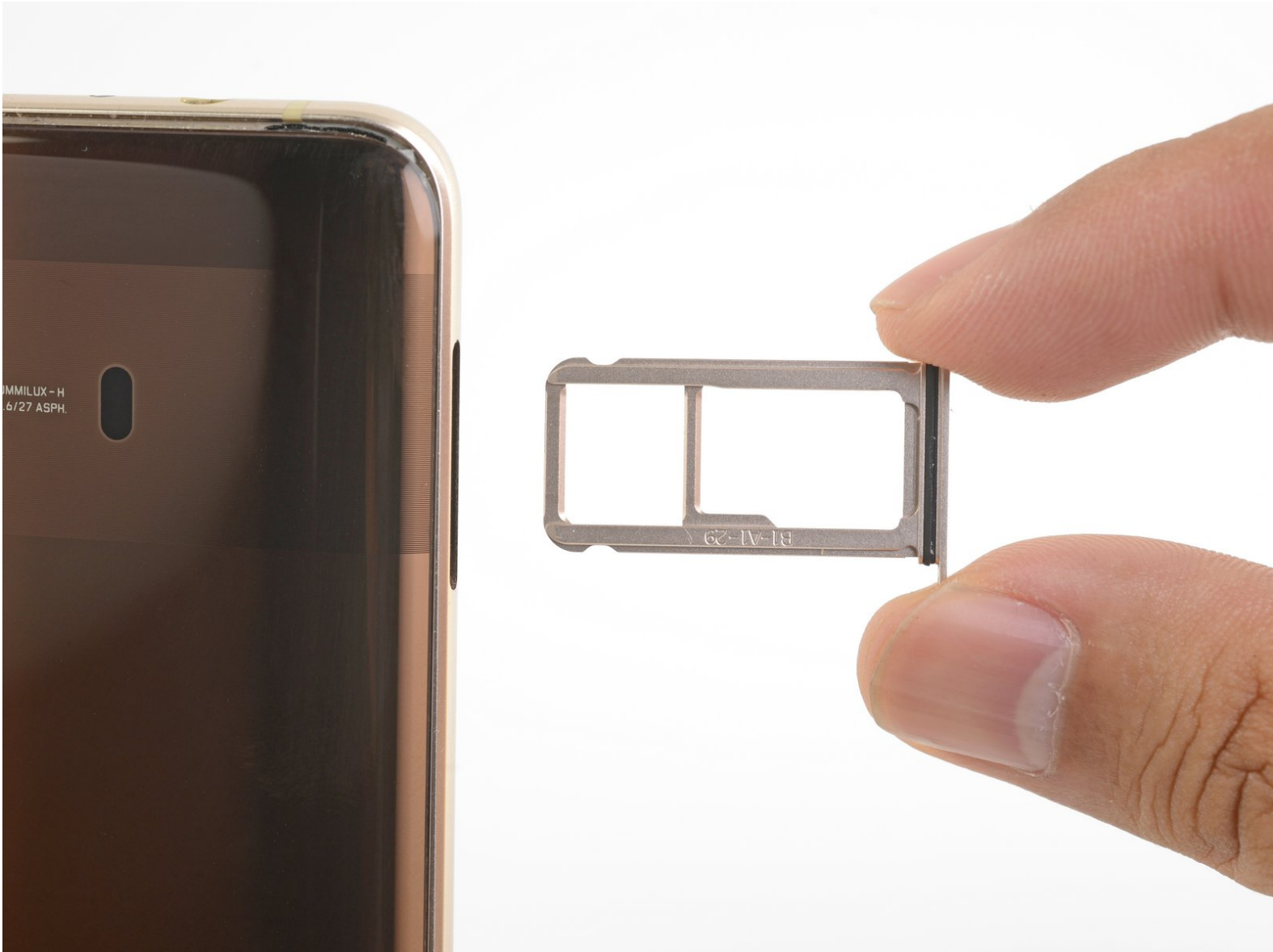




# Huawei Mate 10 SIM Card Tray Replacement

This guide shows how to eject the SIM tray in a Huawei Mate 10.

Written By: Arthur Shi



---

## INTRODUCTION

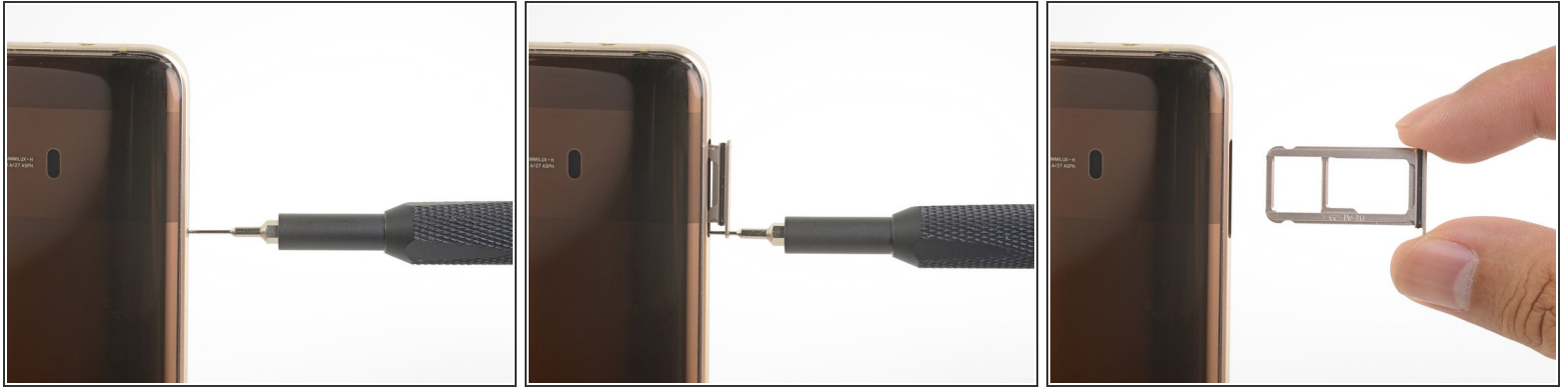
This guide shows how to eject the Mate 10's SIM tray.



### TOOLS:

- [SIM Card Eject Tool](#) (1)
-

## Step 1 — SIM Card Tray



- Insert a SIM card eject tool, bit, or a straightened paperclip into the small hole in the SIM card tray.
- Press to eject the tray.
- Remove the tray from the phone.

To reassemble your device, follow these instructions in reverse order.