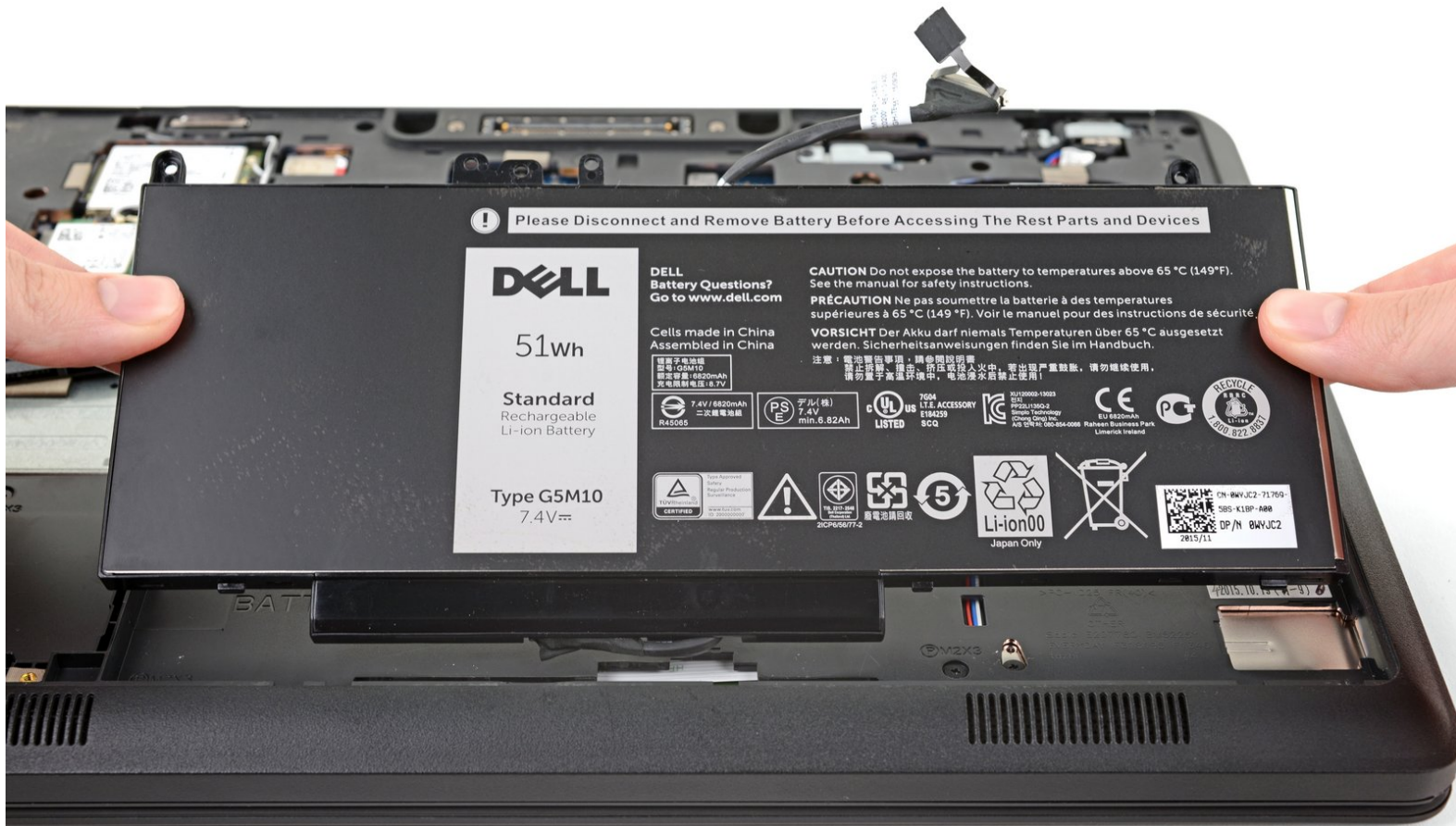




Dell Latitude E5450 Battery Replacement

This guide will show you how to replace a Dell Latitude E5450 battery.

Written By: Taylor Dixon



INTRODUCTION

This guide will show you how to replace the battery in a Dell Latitude E5450.

If your battery is swollen, [take appropriate precautions](#).



TOOLS:

- [Phillips #0 Screwdriver](#) (1)
- [Spudger](#) (1)



PARTS:

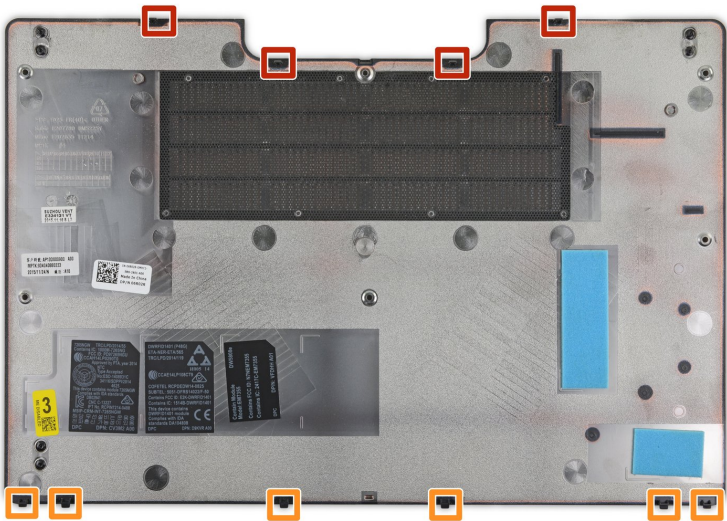
- [Dell Latitude 3150 3160 E5250 E5450 E5550 7.4V Replacement Laptop Battery](#) (1)
- [Dell Latitude E5270 Replacement Laptop Battery](#) (1)

Step 1 — Unscrew the Lower Case



- Remove the six Philips #0 screws from the lower case.
- ⓘ These screws are all 5.6 mm long, but it's still a good idea to [keep track of them](#) and make sure they go back in their proper holes!

Step 2



- ⓘ This photo shows the location of the ten clips that hold the lower case in place. Take note of the location of

the clips, and refer back to this step if your lower case gets stuck during removal.

- Four clips hold the upper half of the case in place and can be released by prying around them with a spudger.
- The other six clips along the bottom edge **can not** be released by prying at them. Instead, they come free by sliding the whole case upward, as shown in [step 5](#) below.

Step 3



- Insert the flat edge of a spudger into the [small divot](#) along the top edge of the case, just below the docking station port.
- Pry up to release the two central clips along the upper edge of the case.

Step 4



- Use your spudger to pry up the remaining clips along the top edge.

Step 5 — Remove the Lower Case



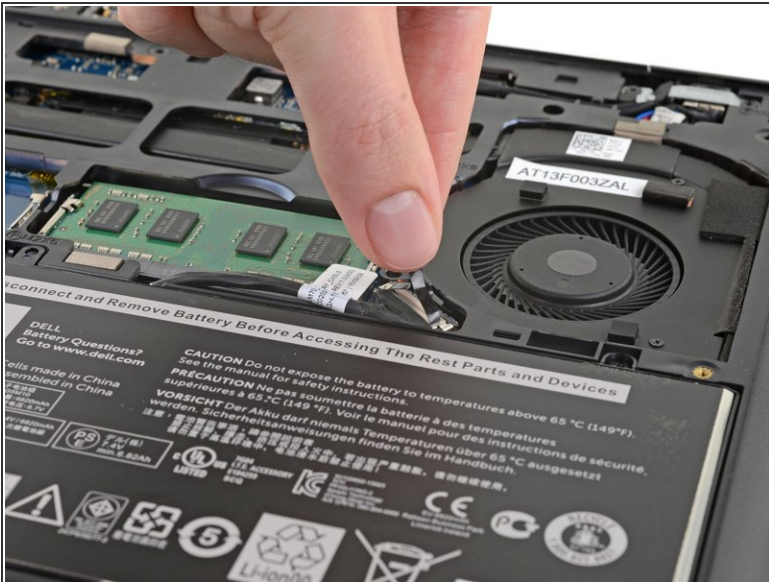
- Slide the lower case upward and remove it.

Step 6



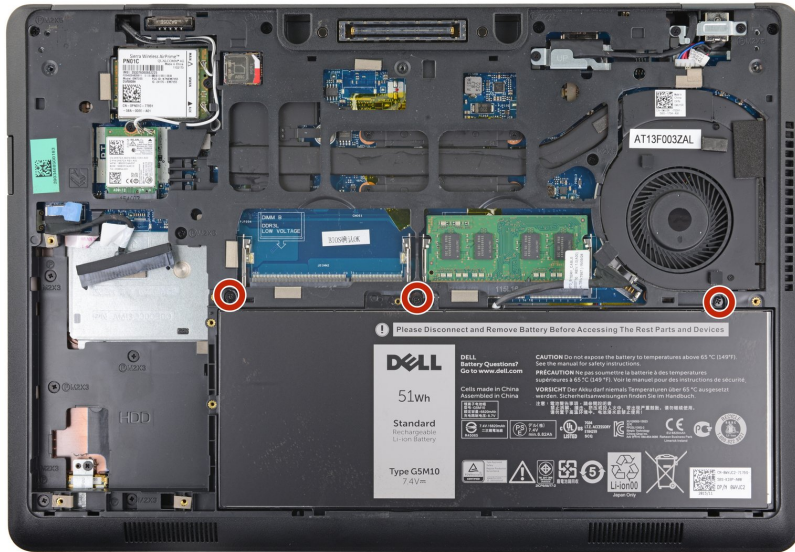
- ☑ When reinstalling the lower case, make sure you slide the bottom edge (the edge without the cutout) into place first before snapping the rest of the clips shut.

Step 7 — Disconnect the Battery



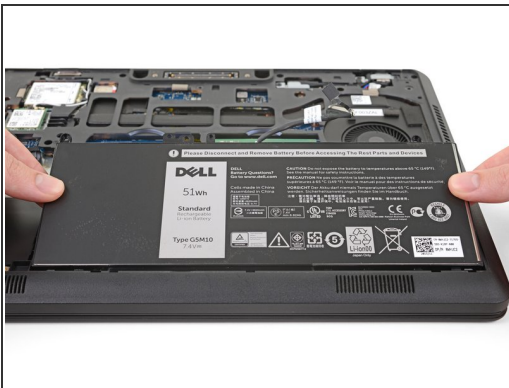
- Pull up on the battery connector's pull tab to disconnect the battery.

Step 8 — Unscrew the Battery



- Remove the three 5.6 mm Philips #0 screws from the top edge of the battery.

Step 9 — Remove the Battery



- Remove the battery from the laptop.

⚠ The battery cell extends below the bottom lip of the enclosure. Make sure you lift the battery away from the bottom edge of the laptop at an angle, as shown in the photos.

Step 10



- ✦ When installing your new battery, slide the bottom edge in first, and make sure it lays flat before you proceed to reinsert the screws or reconnect it.

To reassemble your device, follow these instructions in reverse order.

For optimal performance, calibrate your newly-installed battery: Charge it to 100% and keep charging it for at least 2 more hours. Then use your device until it shuts off due to low battery. Finally, charge it uninterrupted to 100%.

Take your e-waste to an [R2 or e-Stewards certified recycler](#).

Repair didn't go as planned? Check out our [Dell Latitude Answers community](#) for troubleshooting help.