



# Nintendo GameCube Controller Triggers Replacement

This guide demonstrates proper removal of the Left and Right Triggers.

Written By: Sean Michel



---

## INTRODUCTION

The Left and Right triggers are located on the back side of the controller near the cord. The triggers are spring loaded.

---



### TOOLS:

- [Phillips #0 Screwdriver](#) (1)
  - [Tri-point Y0 Screwdriver](#) (1)
  - [Tweezers](#) (1)
-

## Step 1 — Back Panel



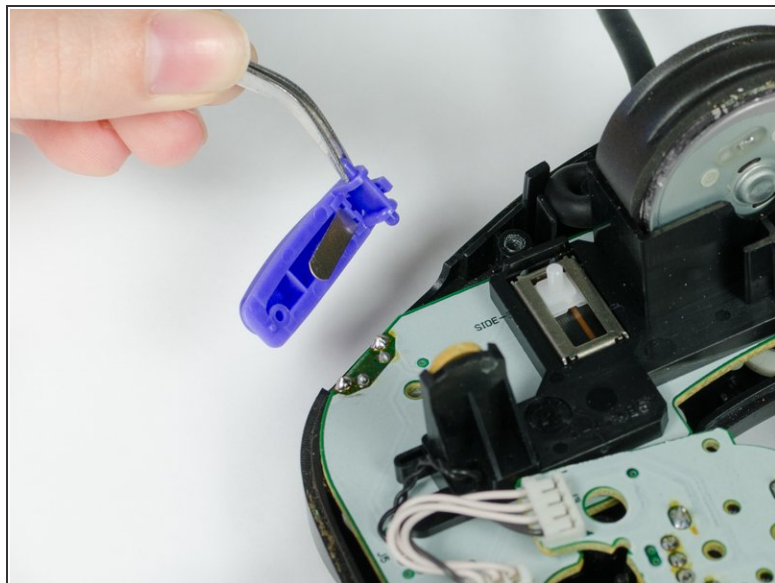
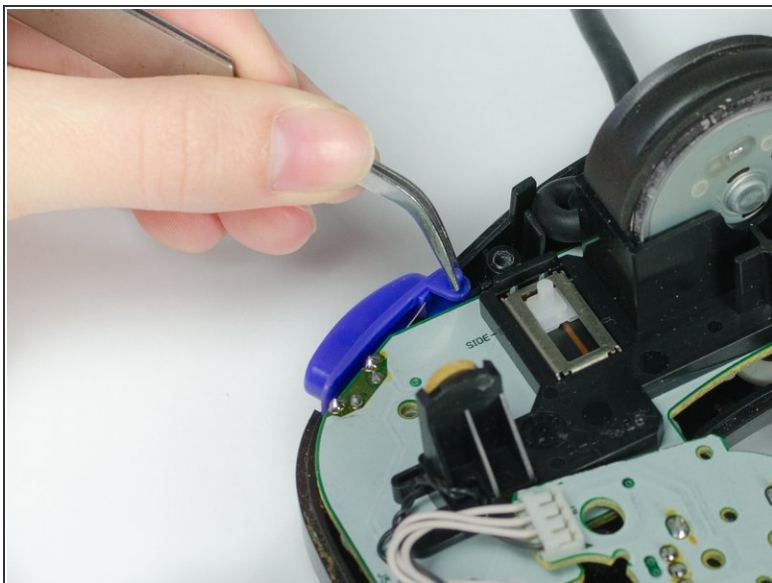
- Place the controller (buttons down) on a solid surface.
- Remove the six 9.2mm Tri-wing Y0 screws that hold the back panel in place.

## Step 2



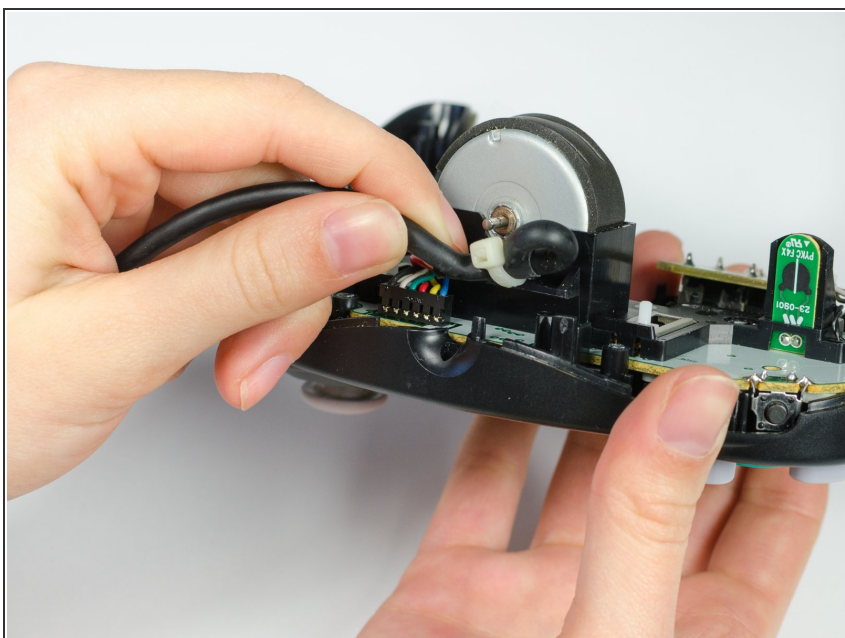
- Gently lift the back panel up, separating it from the front panel.
- ⓘ Some of the buttons may fall out if they are knocked around.

### Step 3 — Z Button



- Grab the Z-button by the peg with tweezers and lift it out of the controller.
- ✦ During re-assembly, make sure the plastic rim and spring fit into the slot provided, or else the case will not shut.

### Step 4 — Circuit Board



- Carefully unhook the cable that is looped around the peg.



## Step 5



- Lift the circuit board out of the controller.
- ⓘ Do not grab the rumble motor to lift the circuit board as shown in the picture. It will in many cases just remove the rumble motor. Instead, grab the edges of the board.

## Step 6 — Triggers



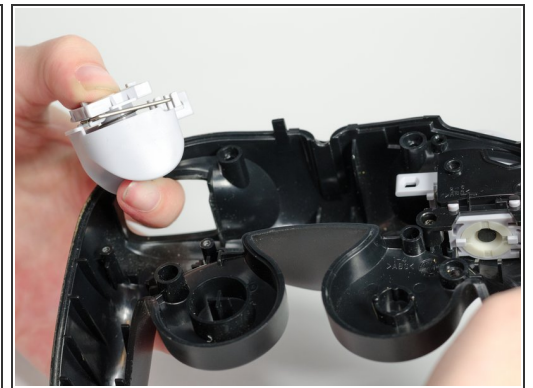
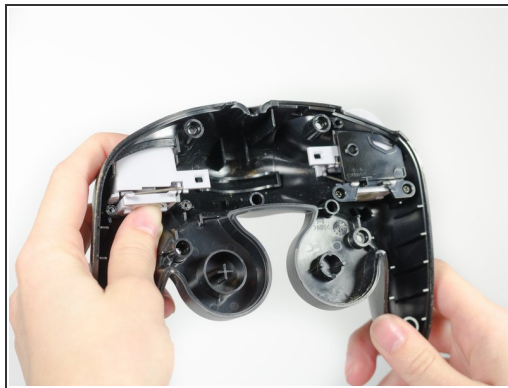
- Remove the two 8.9mm Phillips Head #0 screws.

## Step 7



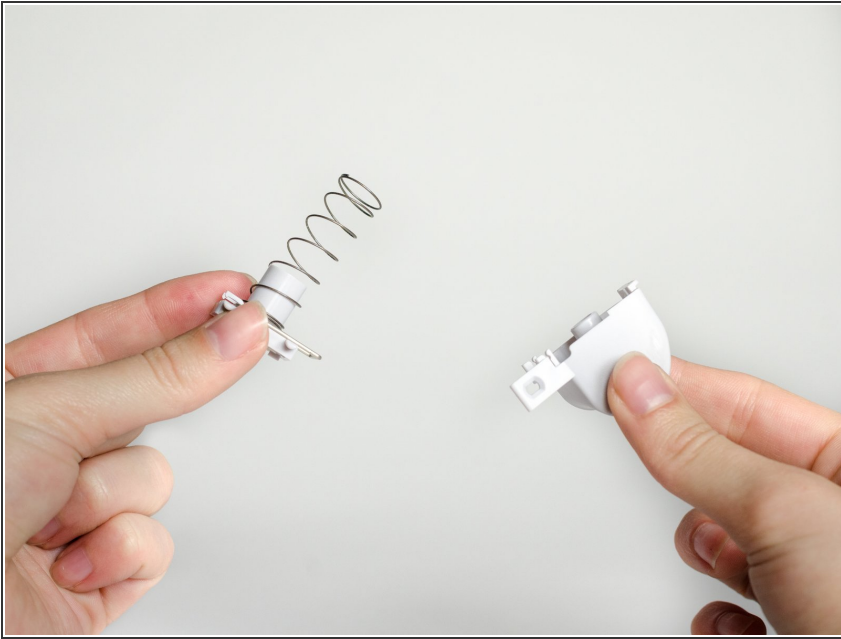
- Remove black cover.

## Step 8



- To remove the trigger assembly, depress the trigger with your index finger as if you are using the controller normally.
- Hold the grey square bracket onside of the controller with your thumb.
- Keep your fingers in the same place while rotating upwards towards you to remove trigger assembly.

## Step 9



- Pull the metal clip from the trigger.

In order to remove the other trigger, simply repeat Steps 6 through Step 9 on the right side.

To reassemble your device, follow these instructions in reverse order.