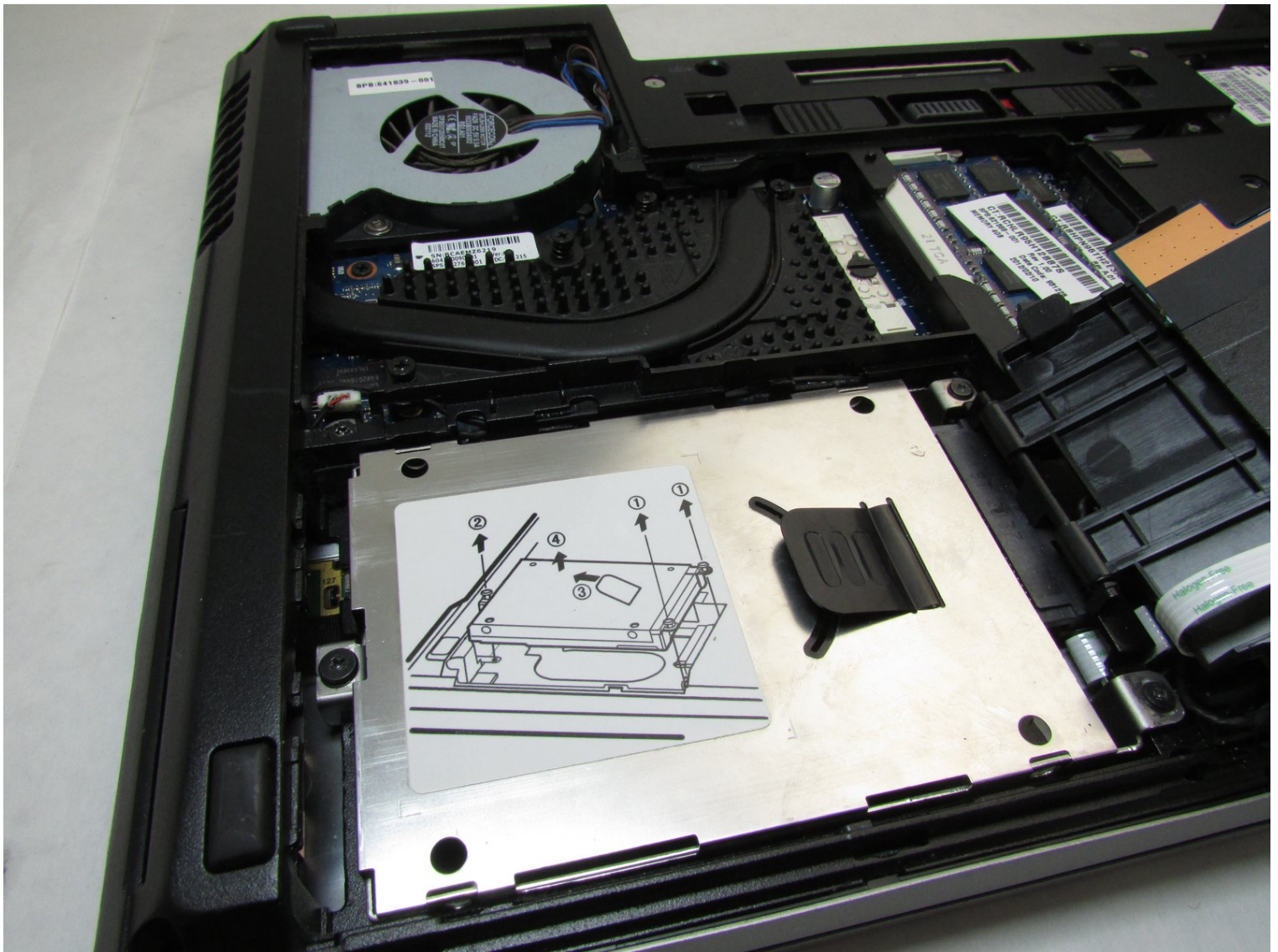




HP Elitebook 8460p Hard Drive Replacement

Use this guide if the hard drive in the HP...

Written By: Garrett Anderson



INTRODUCTION

Use this guide if the hard drive in the HP Elitebook 8460p failed or you are looking to upgrade your hard drive with either a new spinning hard drive or a solid state hard drive. The hard drive is where all the data on your laptop is stored - including the Operating System. Before you remove the hard drive, it is strongly recommended to create a backup of all your data.

Most replacement hard drives should come with further instructions or a software tool to back up all the data on your current hard drive and transfer it to the new hard drive before installing the new hard drive.

Before opening the laptop up to replace the hard drive, ground yourself with an ESD strap to prevent electrostatic discharges from damaging or ruining other sensitive electrical components in the laptop.

To complete this guide, you will need a Phillips screw driver #0, an ESD grounding strap, and a replacement SATA hard drive in a 2.5 form factor.



TOOLS:

[Phillips #0 Screwdriver](#) (1)



PARTS:

[250 GB SSD](#) (1)

[500 GB SSD](#) (1)

[1 TB SSD](#) (1)

[2 TB SSD](#) (1)

Step 1 — Battery



- On the back of the computer, slide the left switch towards the outside of the laptop until you hear a click.

Step 2



- Slide the battery away from the switches until it can be lifted away from the laptop.
- Lift the battery away from the laptop.

Step 3 — Back Panel



- On the back of the laptop, slide the right switch toward the outside of the laptop until you hear a click.

Step 4



- Slide the back shell of the laptop away from the switches until it can be lifted up.
- Lift the shell straight up.

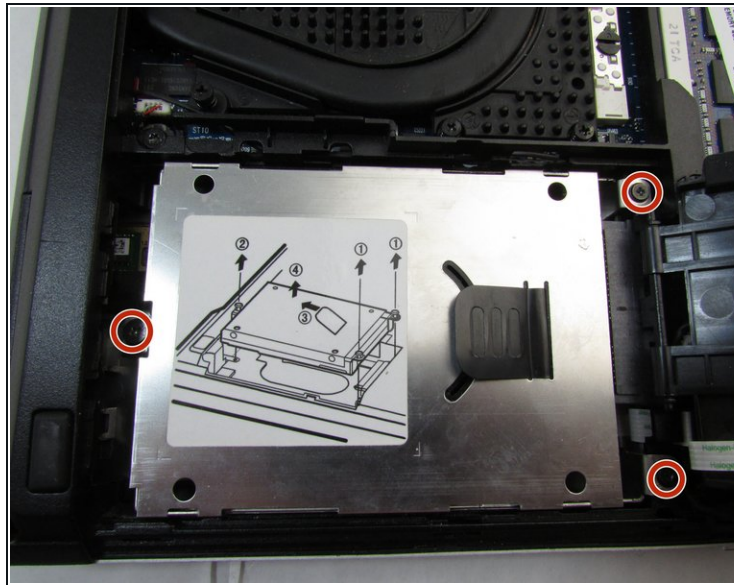
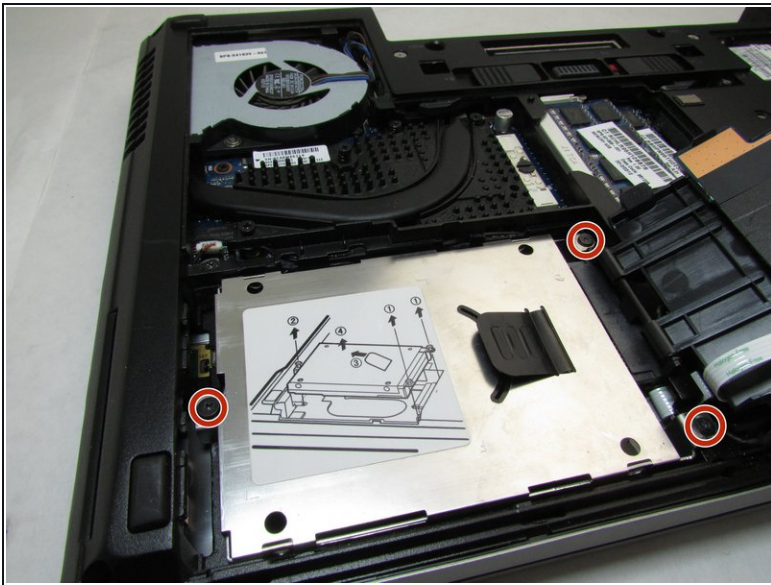
Step 5 — Hard Drive



⚠ Attach an ESD strap to your wrist and to a ground.

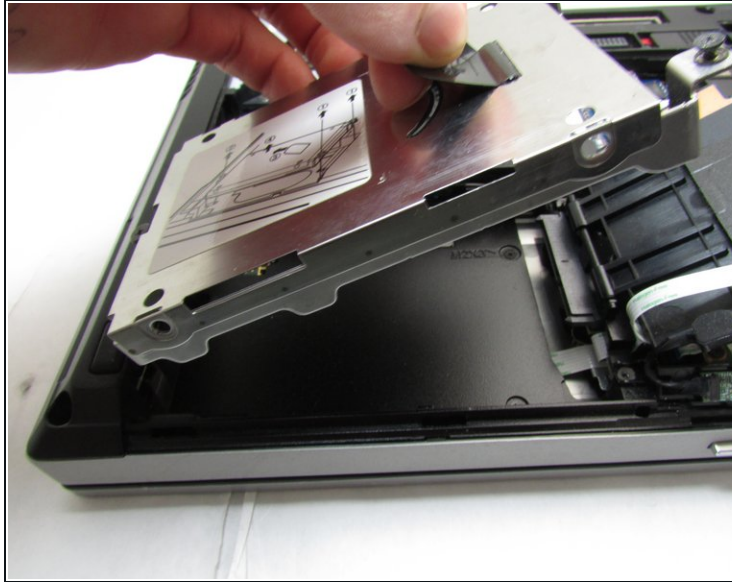
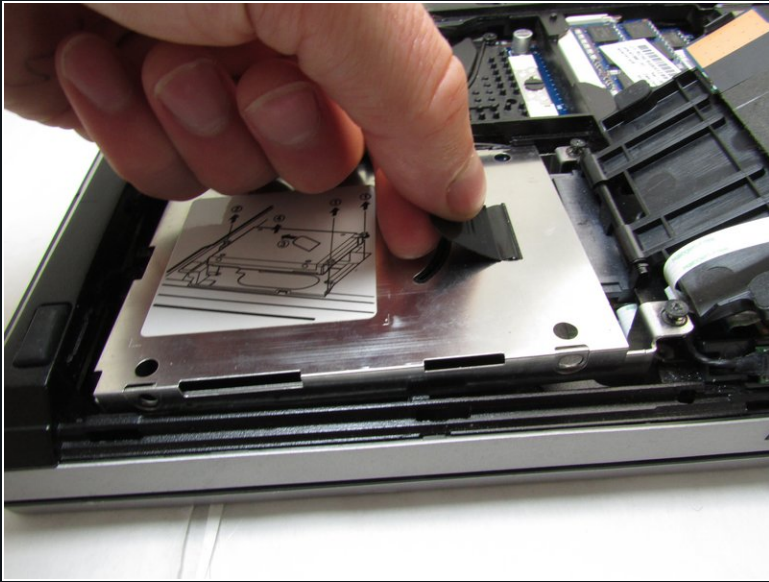
- Pull the tab with the small engraved arrow up and towards the inside of the laptop.

Step 6



- Using a Phillips #0 bit, unscrew the three screws that hold the hard drive assembly in place.

Step 7



- Remove the silver metal cover by pulling straight up on the black tab.

Step 8



- Disconnect the hard drive by pulling the drive straight out to the left.

ⓘ If replacing the hard drive, seat the new hard drive firmly in the connector.

To reassemble your device, follow these instructions in reverse order.