



DeWalt DWE305 Motor Assembly Replacement

This guide will provide step-by-step instructions for how to access and replace the motor assembly for the DeWalt DWE305 reciprocating saw.

Written By: Leanna Pollicar



INTRODUCTION

The motor assembly of the Dewalt DWE305 reciprocating saw may need to be replaced if it does not work when the battery is fully charged, it has not overheated, and the blade has been replaced. Troubleshooting of the DWE305 should be done by following the iFix it procedures at ++[DeWalt DWE305 Troubleshooting](#). The following guide details the process of replacing the motor assembly of the DWE305.

By replacing the motor assembly it will return the DWE305 to working condition. No special skills are required for this project.



TOOLS:

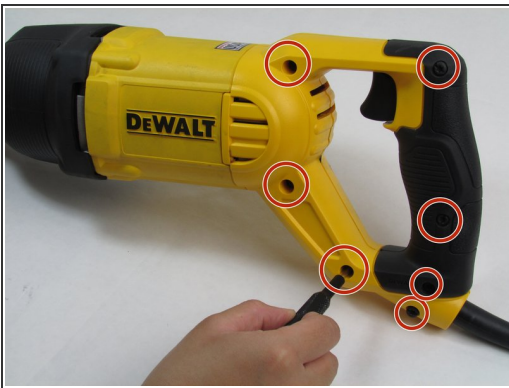
- [iFixit Precision Bit Driver](#) (1)
 - [T20 Torx Screwdriver Bit](#) (1)
 - [T15 Security Torx Screwdriver](#) (1)
 - [Phillips #2 Screwdriver](#) (1)
-

Step 1 — Motor Assembly



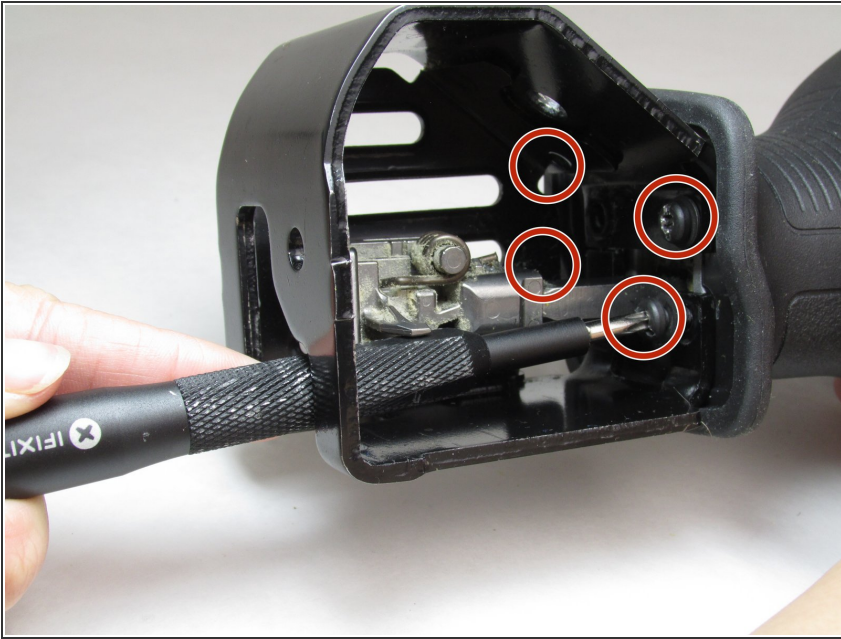
- Remove the large screw from the locking area of the device using a Phillips #2 screwdriver.

Step 2



- Remove all seven 3/4" button head Torx security screws on the left side of the handle with a Torx T20H screwdriver.
- Remove the left side of the handle shown in the second picture.
- Remove the single 3/4" button head Torx security screw from inside the handle using the Torx T15H screwdriver, and remove the trigger assembly from the handle and move aside.

Step 3



- Use a Torx T20H screwdriver to remove the four 3/4" button head Torx security screws from inside the saw blade housing.

⚠ Be cautious of the sharp points on the housing.

Step 4



- Pull the black plastic cover (the shoe) from the device.
- Slide the black rubber component (the boot) off to expose the reciprocating shaft and metal plate.
- ⓘ There will be white lithium grease used for lubrication on the internal surface of the cover.

Step 5



- Remove the rubber gasket from over the four Torx security screws at the base of the gear assembly on the lower part of the device.
- ☑ Be sure to make note of the proper facing and direction of this rubber gasket, and do not forget this piece during reassembly.

Step 6



- Remove the four 3/4" button head Torx security screws from the front with the Torx T20H screwdriver.
- Turn the device over and remove the two 3/4" screws from the handle area with the Torx T20H screwdriver.

Step 7



- Pull out the motor assembly and inspect it for damage or dust.
- ⓘ The motor assembly is magnetic, so it may take a bit of force to remove it.

Step 8



- If there is damage, then replace or repair the device.
- If no damage is observed, then other components should be examined.

To reassemble your device, follow these instructions in reverse order.