



MiTM Pressure Washers CA2703HDHB1 2017

Recoil Starter Replacement

This guide shows how to remove and replace the...

Written By: Arthur Shi



INTRODUCTION

This guide shows how to remove and replace the entire recoil starter assembly. The assembly is an OEM part for [Honda GX200](#) engine models.

If you replace the recoil starter with a non-OEM part, you may have to remove the starter cap. For that, you will need the following additional tools:

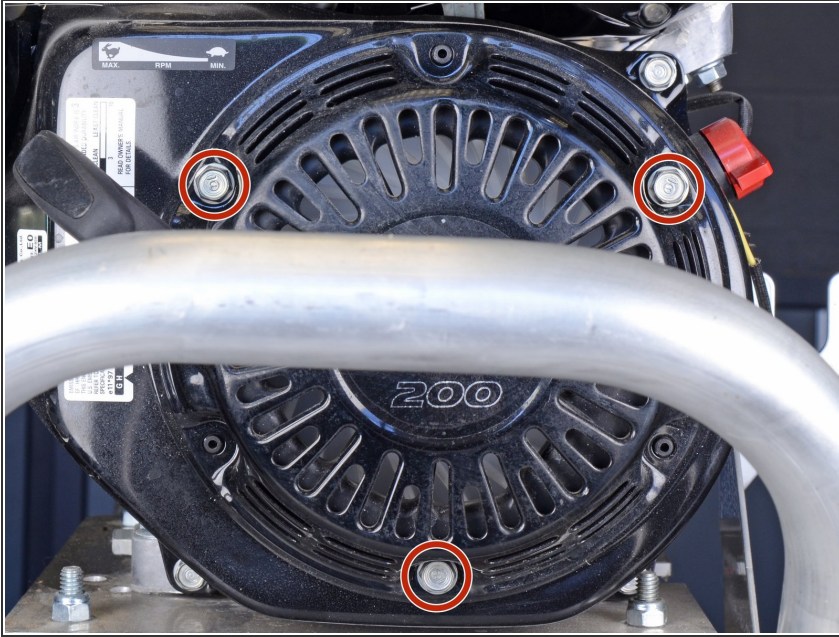
- 3/4" deep socket



TOOLS:

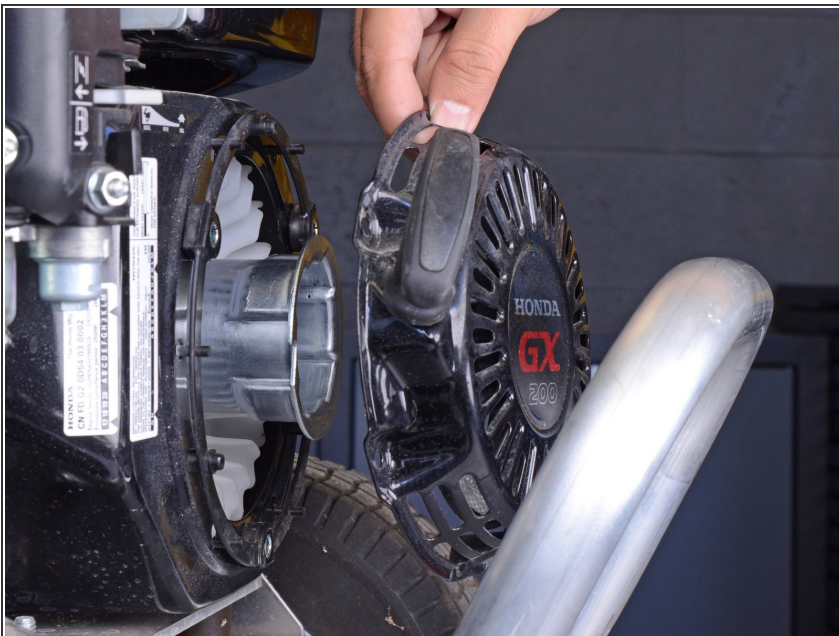
- [10mm Socket](#) (1)
 - [1/4" Drive Ratchet](#) (1)
-

Step 1 — Remove the recoil starter bolts



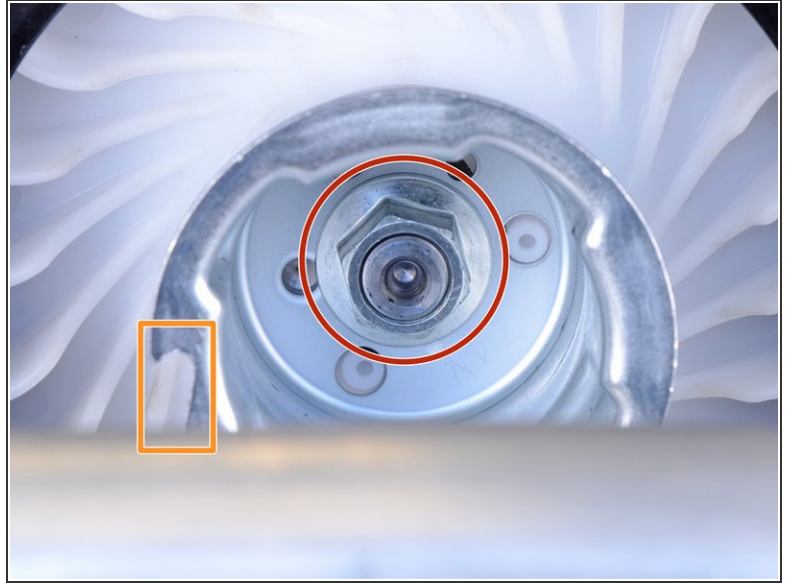
- ⓘ Before you begin, be sure that the engine is powered off and is cool to the touch.
- Use a 10 mm socket to remove the three 24 mm long bolts.

Step 2 — Remove the recoil starter assembly



- Remove the recoil starter assembly.

Step 3



- ⓘ If you are replacing the assembly with a **non-OEM part**, you may also have to replace the starter cap.
- Remove the 3/4" bolt with a deep socket.
 - This bolt can be very difficult to remove. Use the hook as a bracing point to keep the starter cap from rotating.

To reassemble your device, follow these instructions in reverse order.