



# Game Boy Color LCD Display Replacement

A guide on how to install the Game Boy Color LCD Display.

Written By: Ajmal Puyehgar



---

## INTRODUCTION

The LCD Display is the screen that displays images from the Game Boy Color. This guide details how to disassemble and install an LCD Display.

---



### TOOLS:

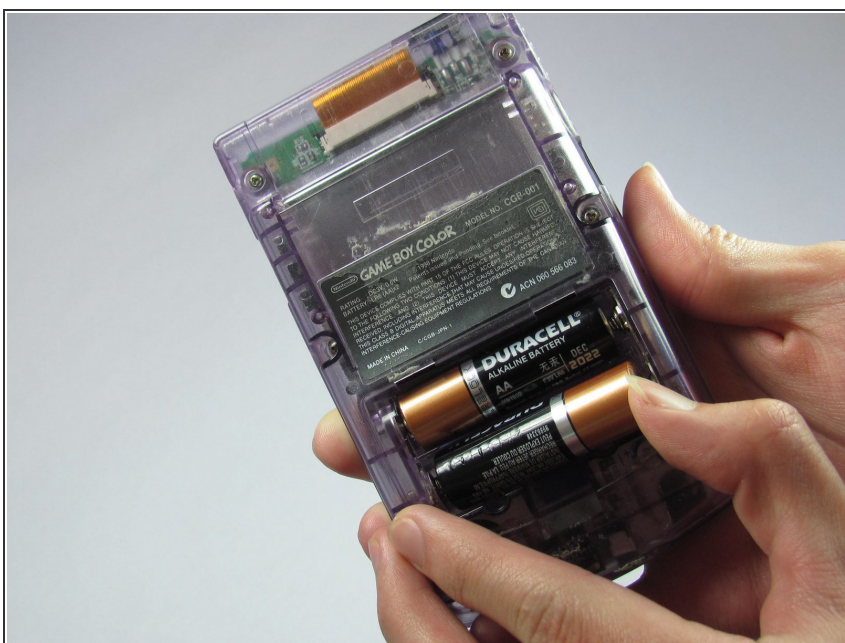
- [Phillips #1 Screwdriver](#) (1)
  - [Spudger](#) (1)
  - [Tri-point Y0 Screwdriver](#) (1)
-

## Step 1 — Battery



- Locate the battery compartment on the back of the Game Boy Color.
- Push down on the tab and hinge the cover downwards and outwards to remove the battery cover.

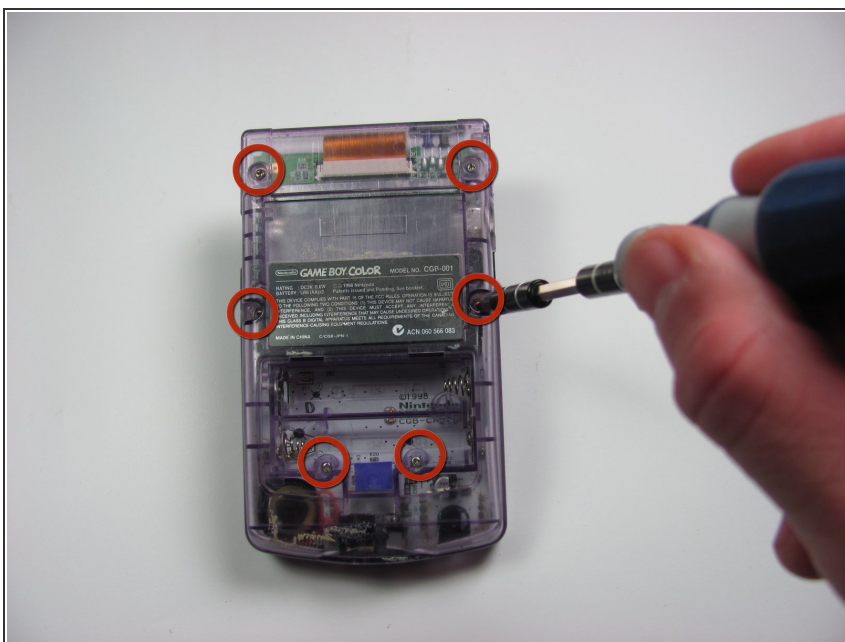
## Step 2



- Remove the batteries from the battery compartment.

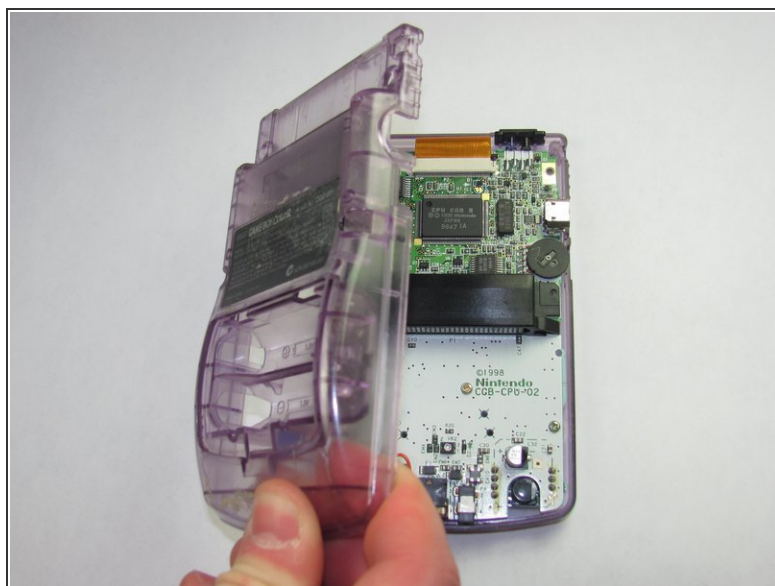


## Step 3 — Back Housing



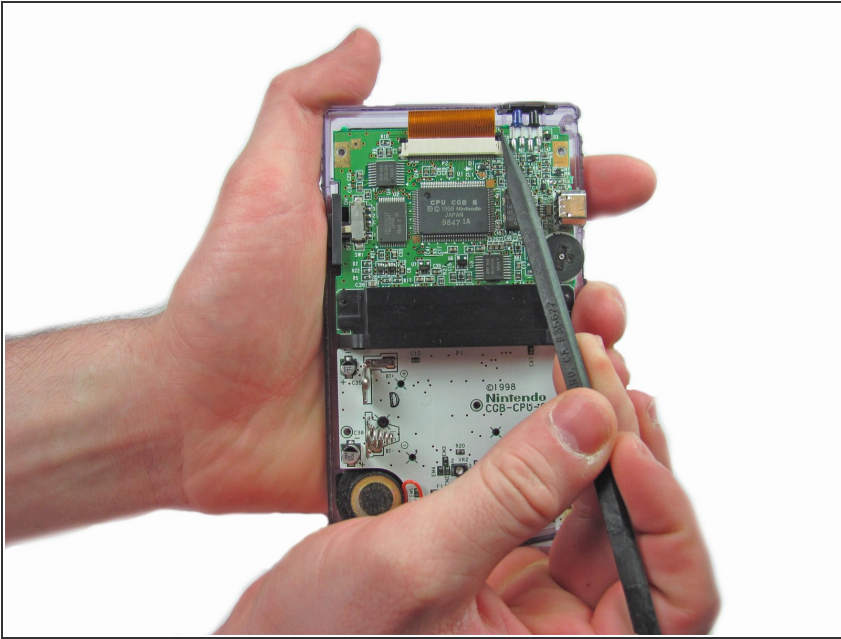
- Using a Y1 screwdriver, remove the six screws on the back of the device as pictured. The bottom two screws are located inside of the battery compartment.

## Step 4



- Gently lift and separate the back housing from the rest of the device. Now you've got the back housing out!

## Step 5 — LCD Ribbon Cable



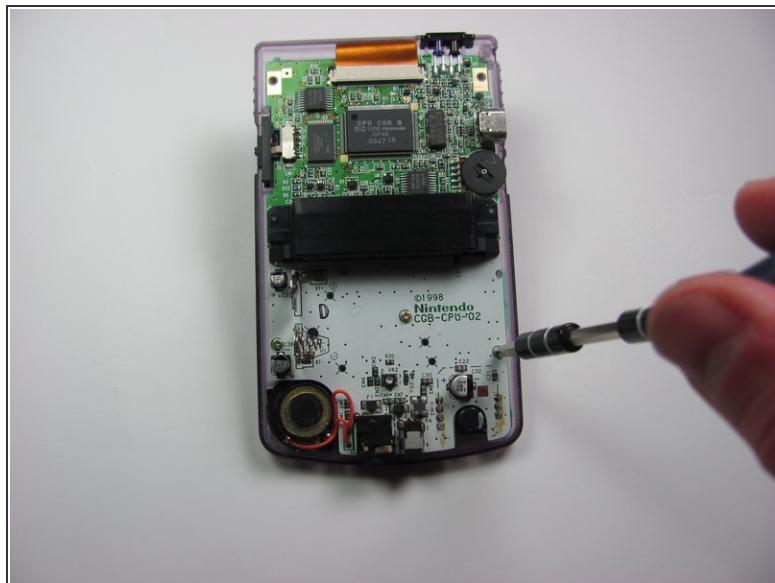
- Push up on the tabs on either side of the ribbon with a spudger.

## Step 6



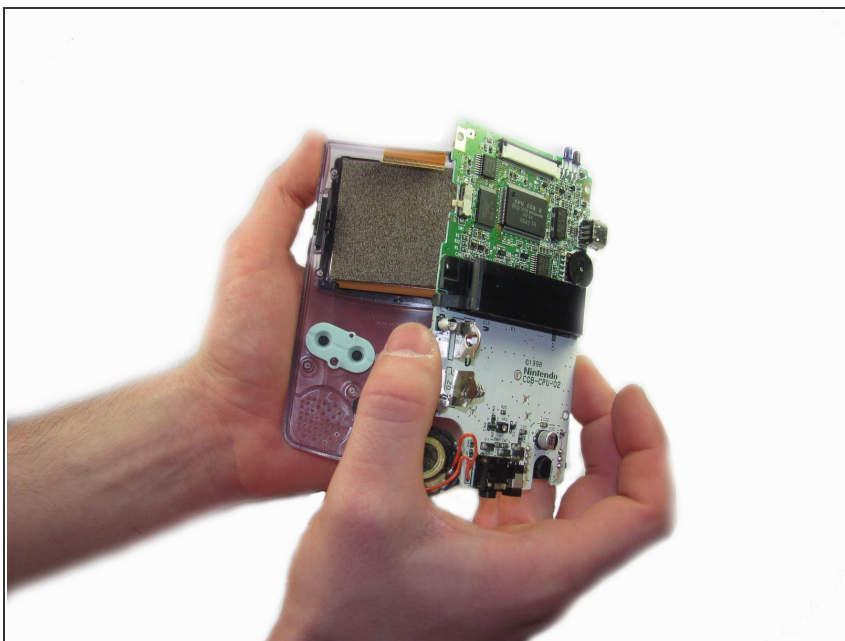
- Gently remove the ribbon cable from the port

## Step 7 — Motherboard



- Using the Phillips #1 screwdriver, remove the 3 screws shown in the picture.

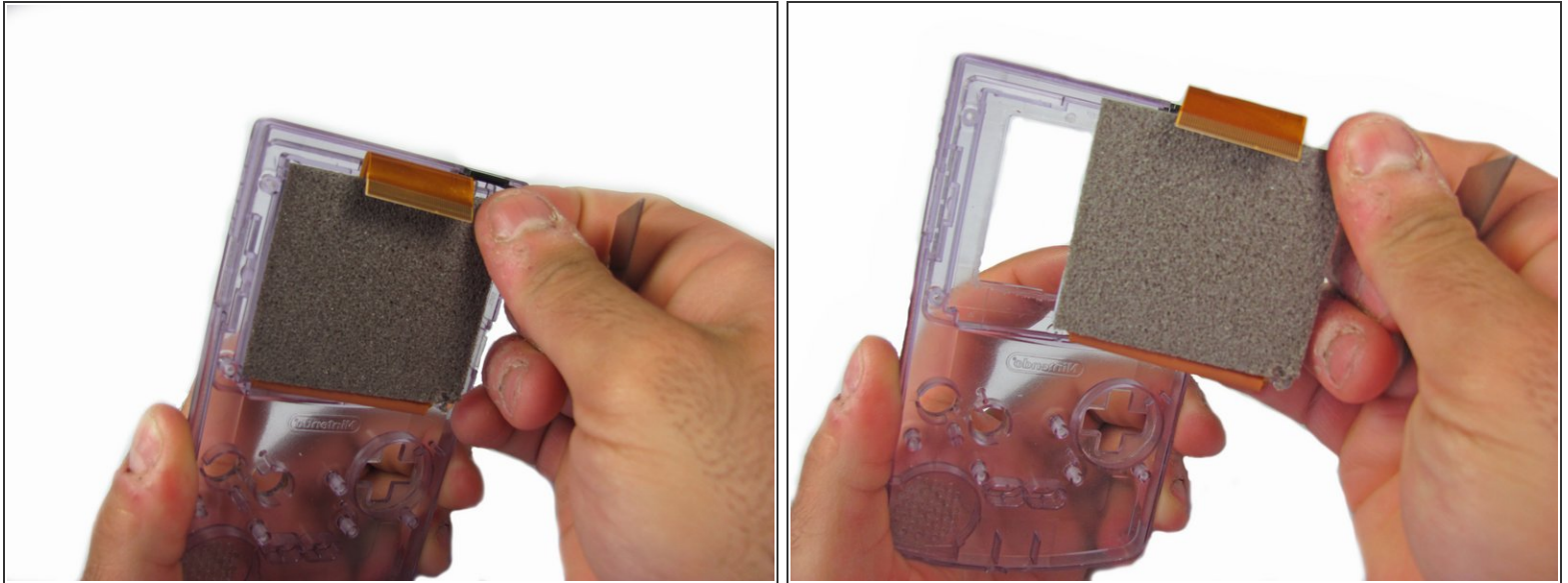
## Step 8



- Gently lift the motherboard from the front housing.



## Step 9 — LCD Display



- Gently pry and lift the LCD Display from the front panel.
- ⓘ Twisting the front casing may help gain more leverage.

To reassemble your device, follow these instructions in reverse order.