



# Hover 1 Eclipse Battery Replacement

This guide will teach the user how to replace their battery on the Hover 1 Eclipse.

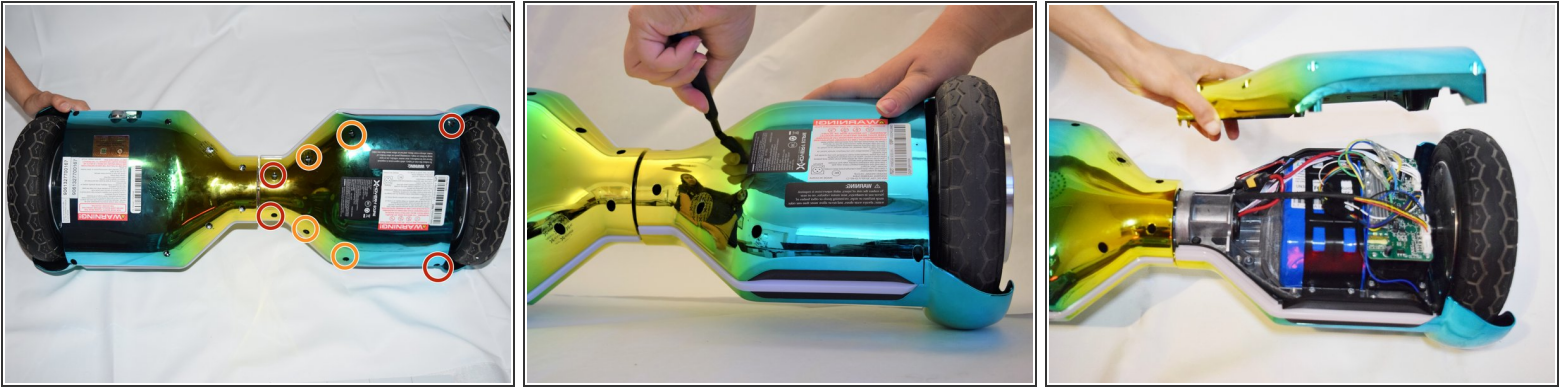
Written By: Mina Dedijer



## INTRODUCTION

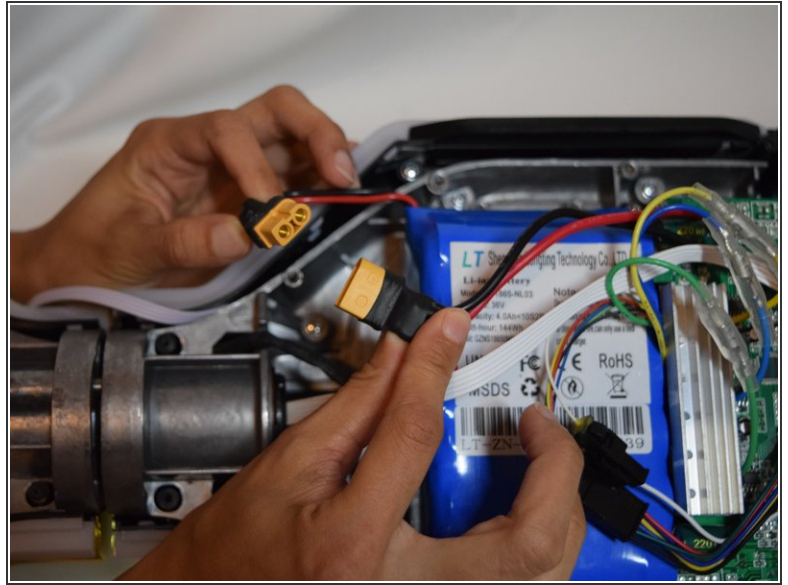
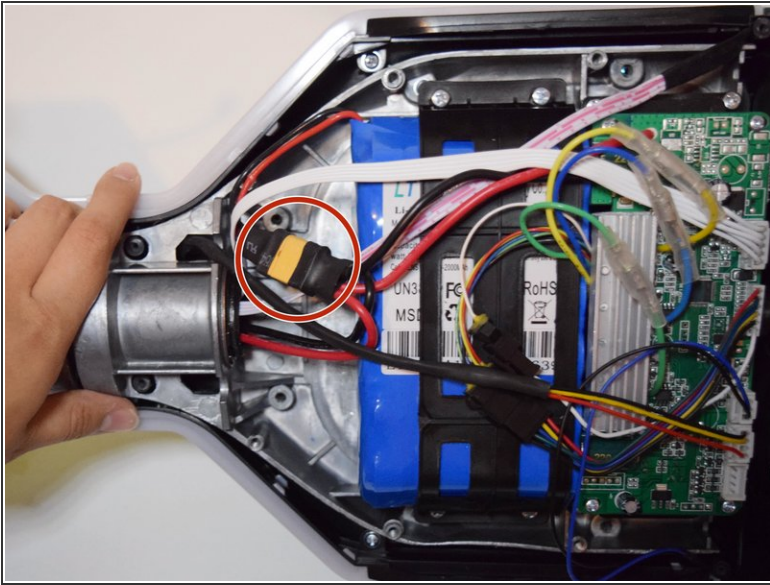
This guide will teach you how to replace the battery on your Hover 1 Eclipse. The battery is the power source for your Hover 1 Eclipse. Your battery will need replacing if it is malfunctioning or if it has been damaged. To replace your battery you must have basic knowledge of how to use a screwdriver. You must also be very careful with the wires that surround the battery when following these steps.

## Step 1 — Battery



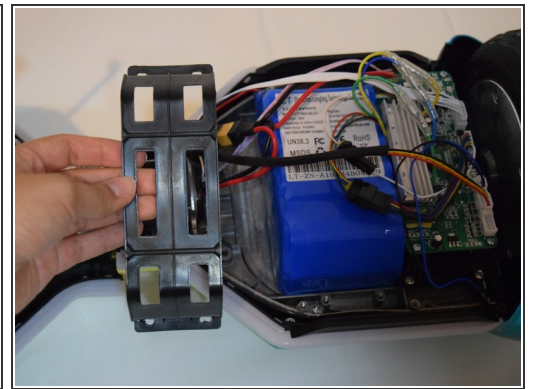
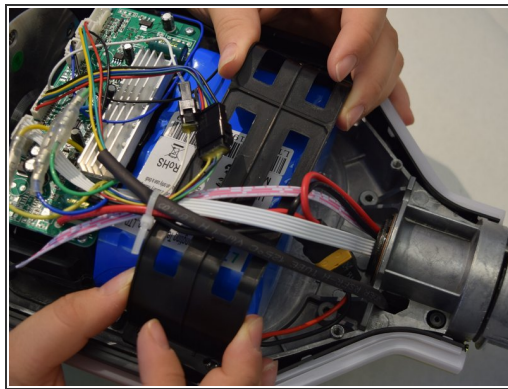
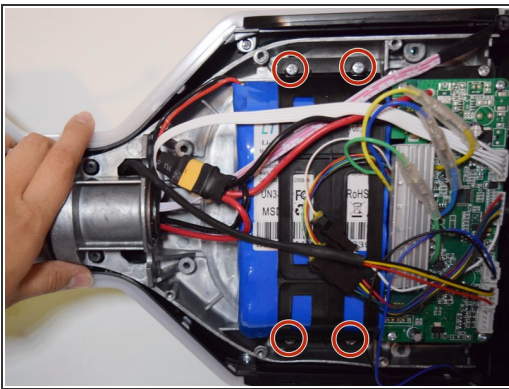
- Using a Phillips #1 Screwdriver, remove the four 11mm screws that surround the edge of the plug side bottom shell piece.
- Using a Phillips #1 Screwdriver, remove the four 13mm screws that surround the edge of the plug side bottom shell piece.
- Remove the right side bottom shell piece.

## Step 2



- Locate the black and red wires connected by an yellow header, Xt60.
- i* This wire connects the battery to the motherboard.
- Carefully tug on the two sides of the yellow header to disconnect them.

## Step 3





- Using a Phillips #1 Screwdriver, remove the four 11mm screws that secure the black plastic keeping the battery in place.
- Carefully remove the black plastic from the hoverboard.
- ⚠ Be mindful of the wires surrounding the battery.



## Step 4



 Be careful with the wires surrounding the battery when executing this step.

 The battery is attached to the metal with an adhesive.

- Firmly grasp the battery and tug on it until it is free from the metal.

To reassemble your device, follow these instructions in reverse order.