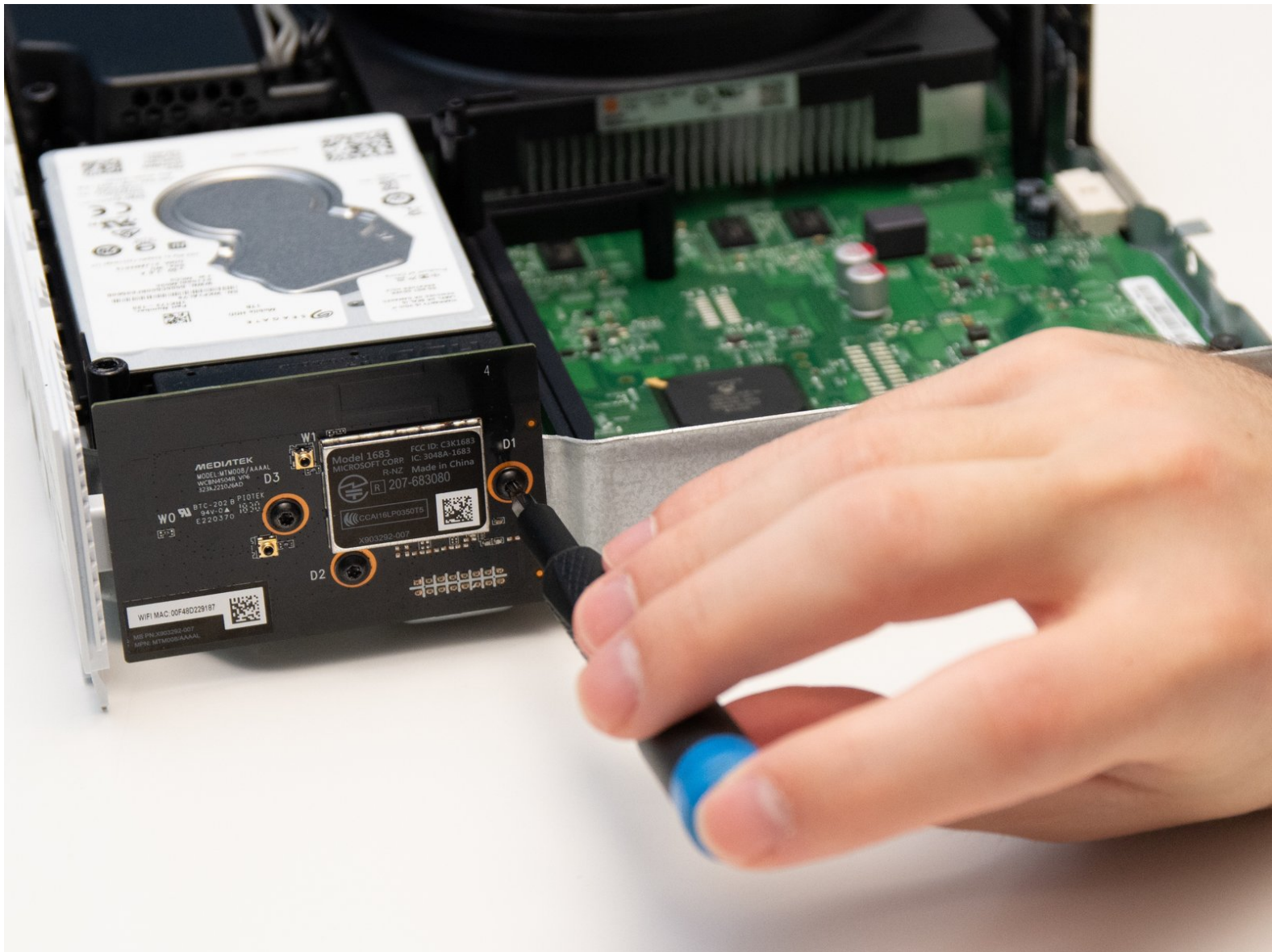




# Xbox One S All Digital Edition Wifi Card Replacement

If the Xbox is unable to find or connect to the internet / WiFi / network, use this guide to fix this issue.

Written By: Jules Hajjar



---

## INTRODUCTION

This guide covers the replacement of the WiFi Card on the Xbox One S All Digital Edition (Model 1681). The WiFi Card acts as a transmitter and receiver between the Xbox and the network it is hooked up to. Symptoms of a broken WiFi Card could be the Xbox's inability to find or connect to any near-by networks. Disconnect all cables prior to disassembly.



### TOOLS:

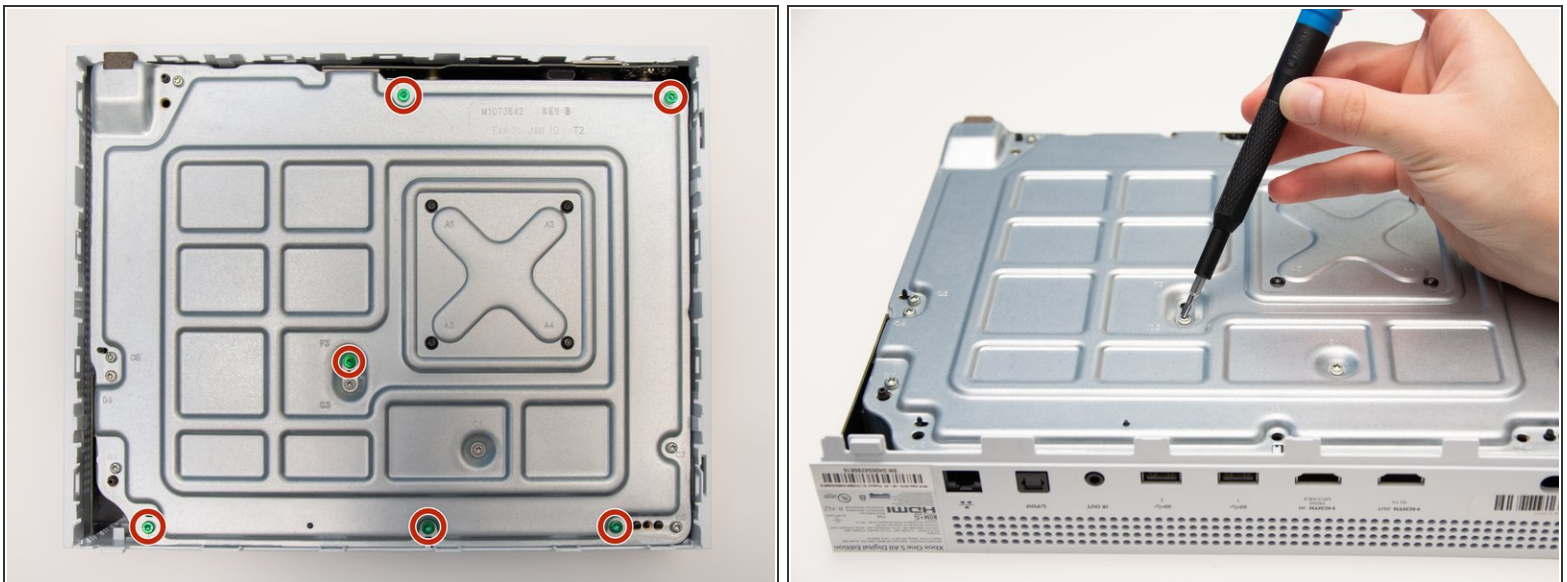
- [iFixit Opening Tools](#) (1)
  - [TR10 Torx Security Screwdriver](#) (1)
  - [T8 Torx Security Bit Screwdriver](#) (1)
-

## Step 1 — Plastic Enclosure



- Position the iFixit Opening Tool's riveted edge in between the top and bottom cover of the plastic enclosure.
- Apply downward pressure on the iFixit Opening Tool until the security clip unlocks.
- Repeat on different points of the plastic enclosure until the bottom cover is removed.

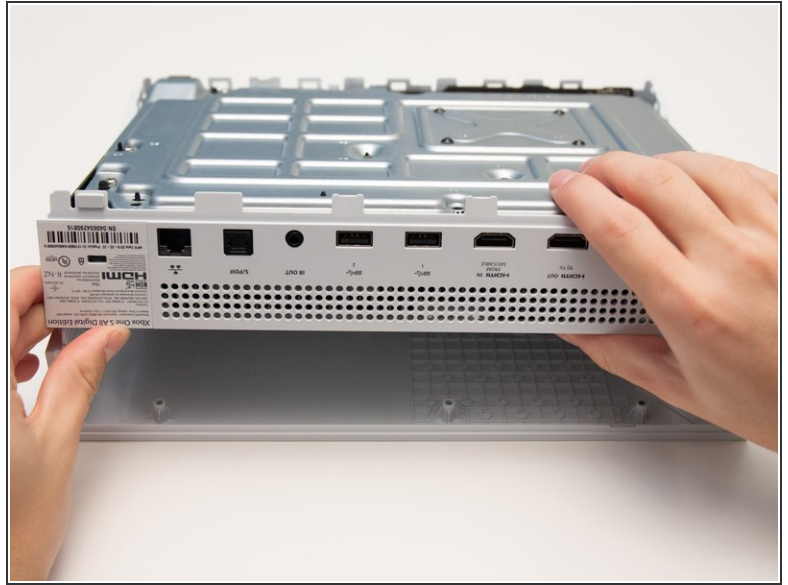
## Step 2



- Remove the six 50 mm green screws (labeled F1-F6) from the metal chassis using a Torx 10 screwdriver.
- i** These screws hold the top cover of the plastic enclosure to the chassis.



### Step 3



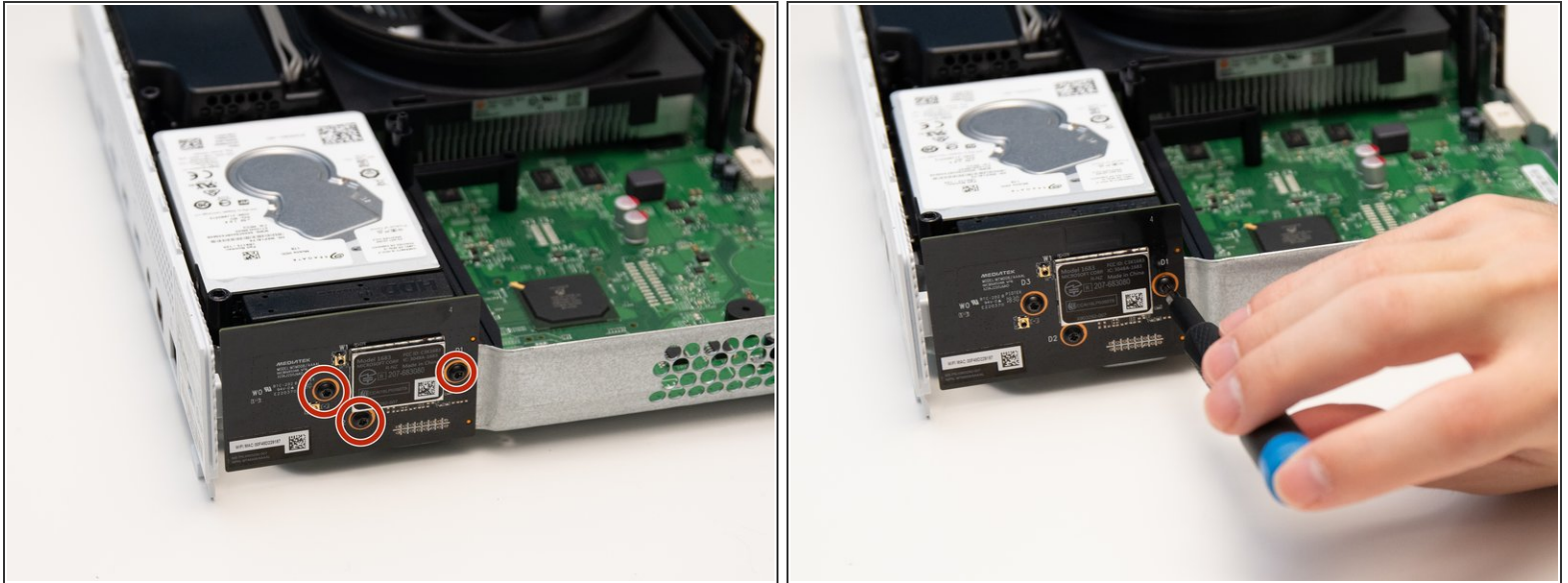
- Apply pressure to peel off the sides of the casing.
- Separate the metal chassis from the top cover, lifting the back of the chassis up and away from the top cover.
- *i* The plastic back panel is meant to stay attached to the metal chassis.

### Step 4



- Flip the metal enclosure so that the fan cover is on top.

## Step 5 — Wifi Card



- Remove the three 15 mm screws with the Torx T8 Security Bit Screwdriver.
- i** The top of the metal chassis has been removed in the picture, but is not necessary for the replacement.

## Step 6



- Carefully remove the WiFi Card from the metal chassis.

To reassemble your device, follow these instructions in reverse order.