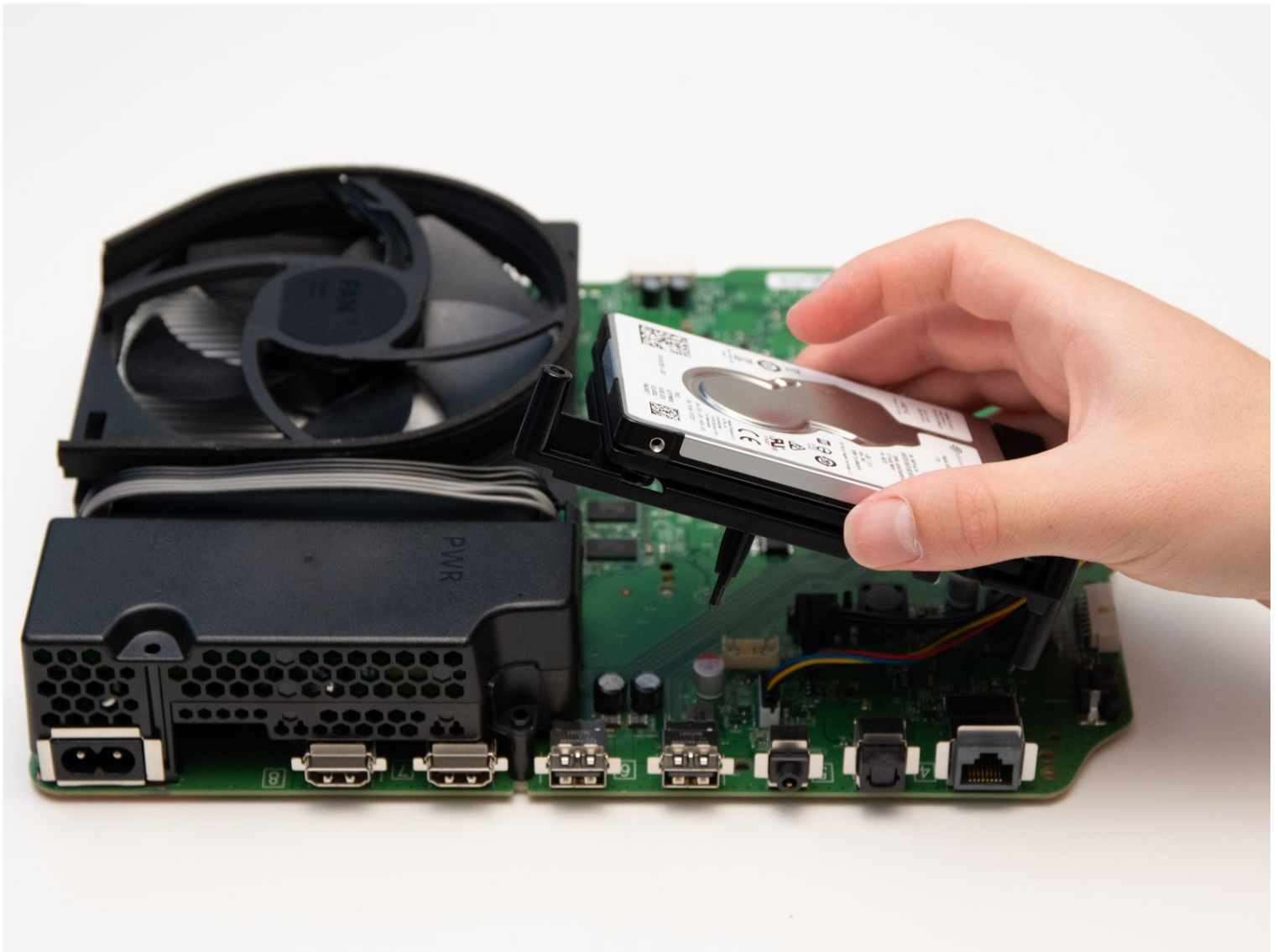




Xbox One S All Digital Edition Hard Drive Replacement

This replacement guide provides a step by step...

Written By: Jules Hajjar



INTRODUCTION

This replacement guide provides a step by step process on replacing the Hard Drive of the Xbox One S All Digital Edition (Model 1681). The Hard Drive is responsible for storing games or any downloadable content. [Symptoms](#) of a broken Hard Drive are if a user is unable to download or access downloaded games or content. Disconnect all cables prior to disassembly.

TOOLS:

[iFixit Opening Tool](#) (1)
[TR10 Torx Security Screwdriver](#) (1)
[TR8 Torx Security Screwdriver](#) (1)

PARTS:

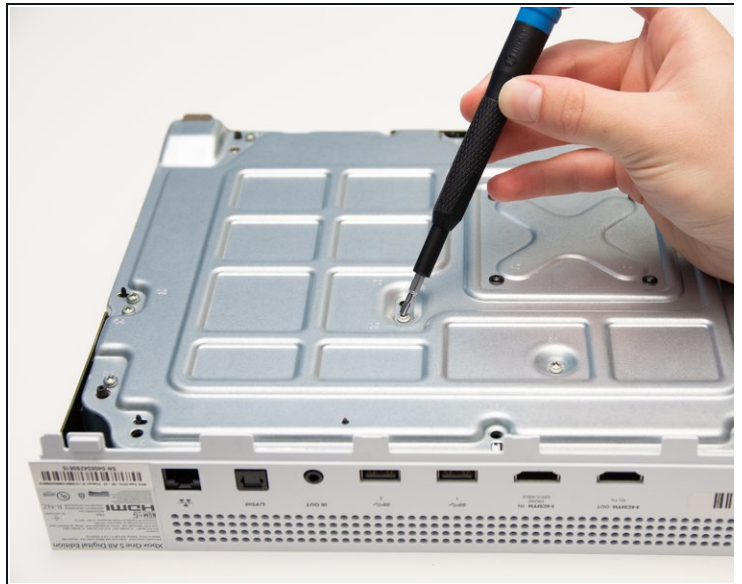
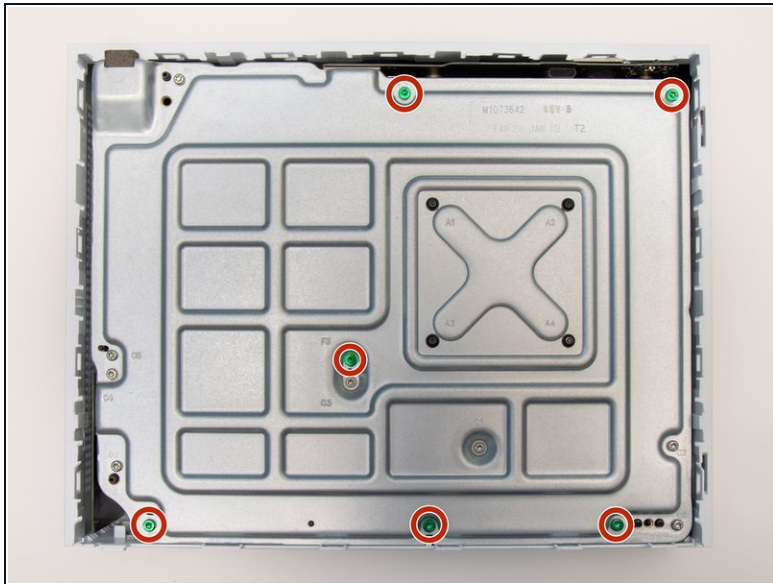
[Xbox One S HDD](#) (1)

Step 1 — Plastic Enclosure



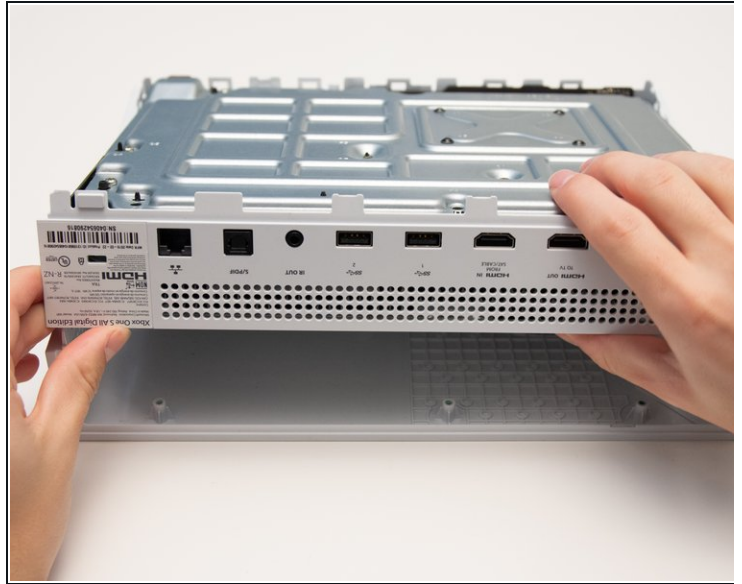
- Position the iFixit Opening Tool's riveted edge in between the top and bottom cover of the plastic enclosure.
- Apply downward pressure on the iFixit Opening Tool until the security clip unlocks.
- Repeat on different points of the plastic enclosure until the bottom cover is removed.

Step 2



- Remove the six 50 mm green screws (labeled F1-F6) from the metal chassis using a Torx 10 screwdriver.
- ⓘ These screws hold the top cover of the plastic enclosure to the chassis.

Step 3



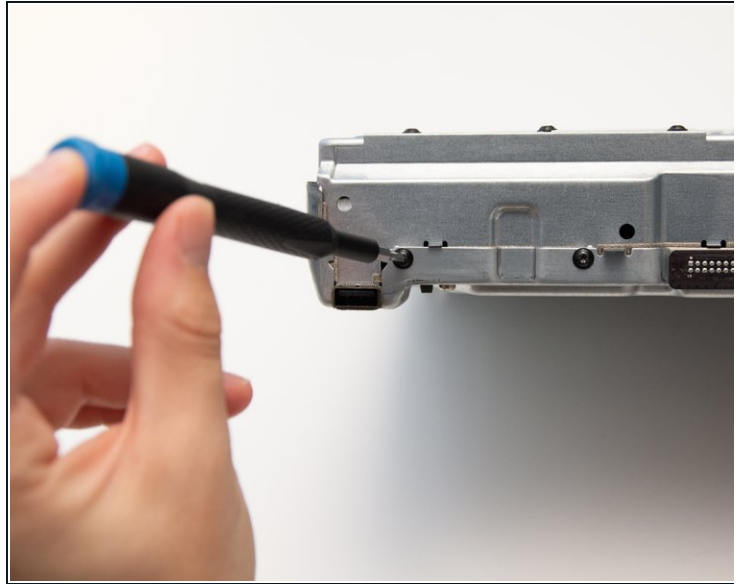
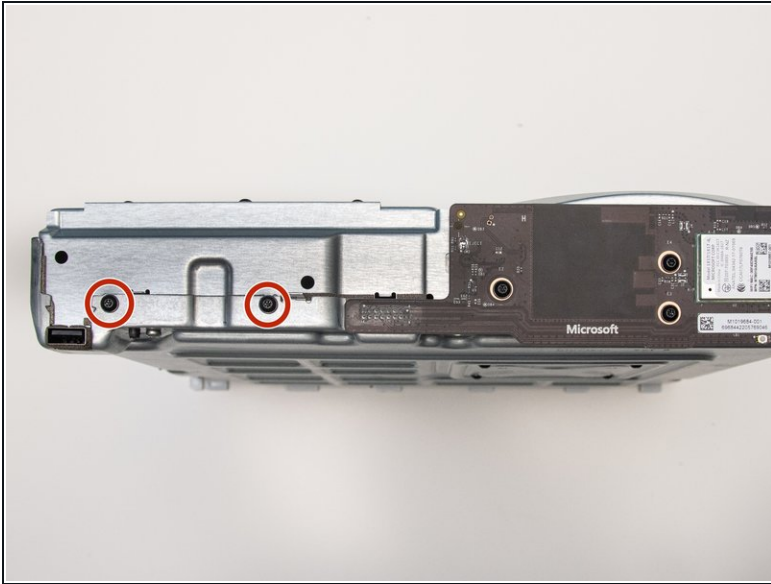
- Apply pressure to peel off the sides of the casing.
- Separate the metal chassis from the top cover, lifting the back of the chassis up and away from the top cover.
- ⓘ The plastic back panel is meant to stay attached to the metal chassis.

Step 4



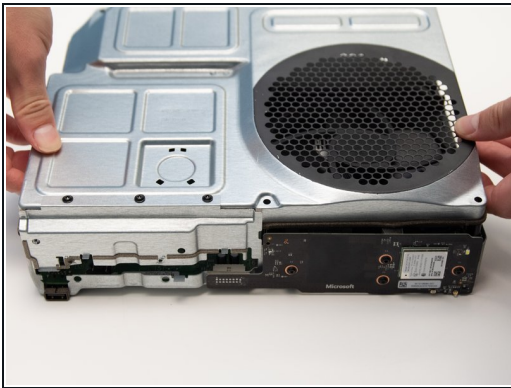
- Flip the metal enclosure so that the fan cover is on top.

Step 5 — Top Metal Shield



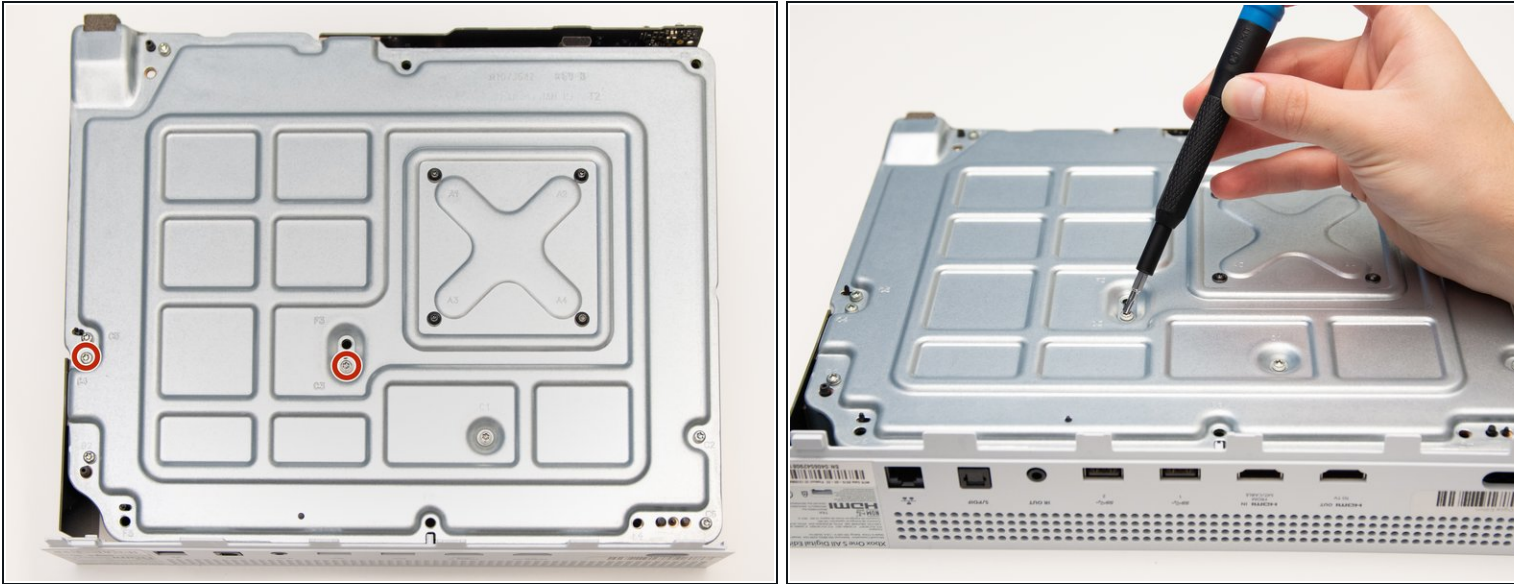
- Remove the two 15mm screws from the front panel using the Torx T8 screwdriver.

Step 6



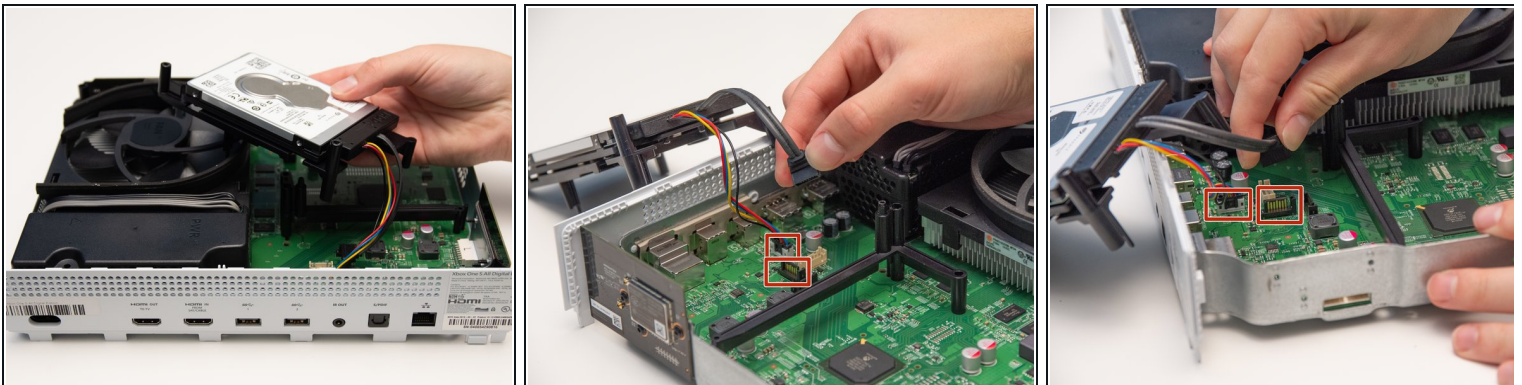
- Carefully slide the top metal case off the frame.
- ⓘ This may require shifting the case side to side as you slide up.

Step 7 — Hard Drive



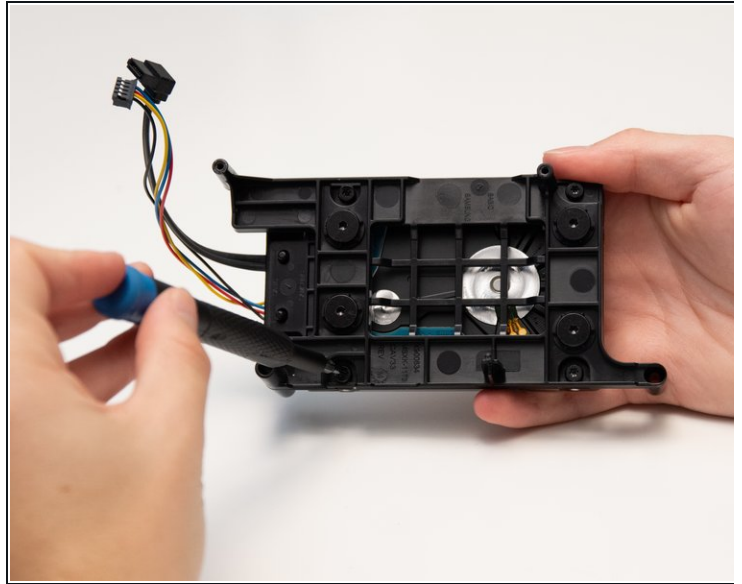
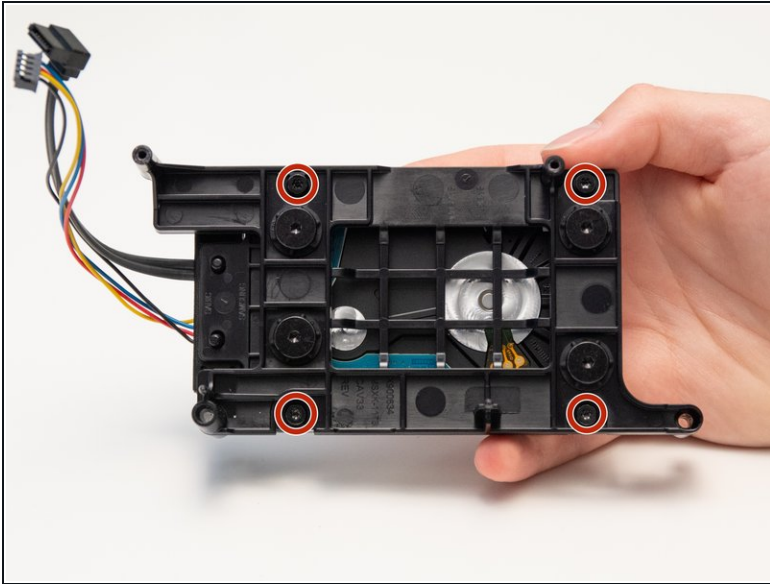
- Remove the two 10mm screws, labeled C3 and C4, attaching the plastic hard drive case to the metal chassis with the Torx T10 Security screwdriver.

Step 8



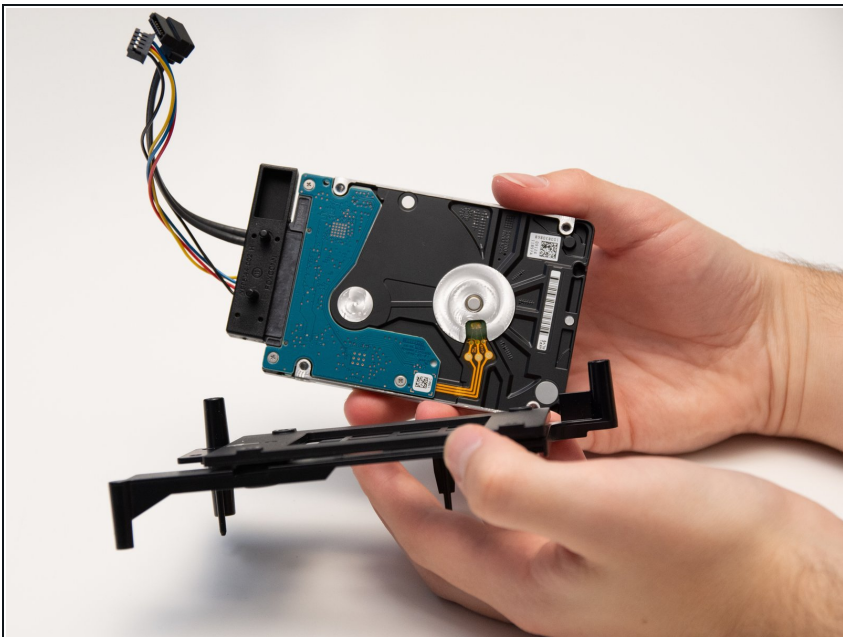
- Lift the hard drive and the black plastic casing from the chassis.
- Remove the two sets of wires from the motherboard by gently pulling them directly upward.

Step 9



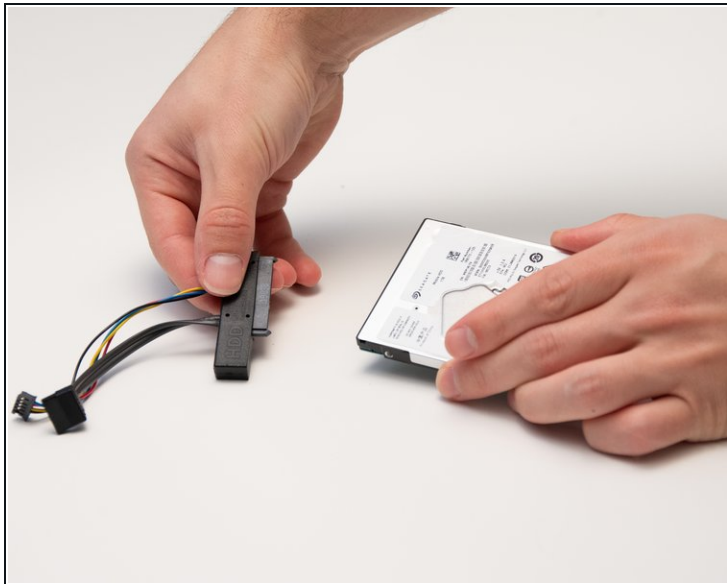
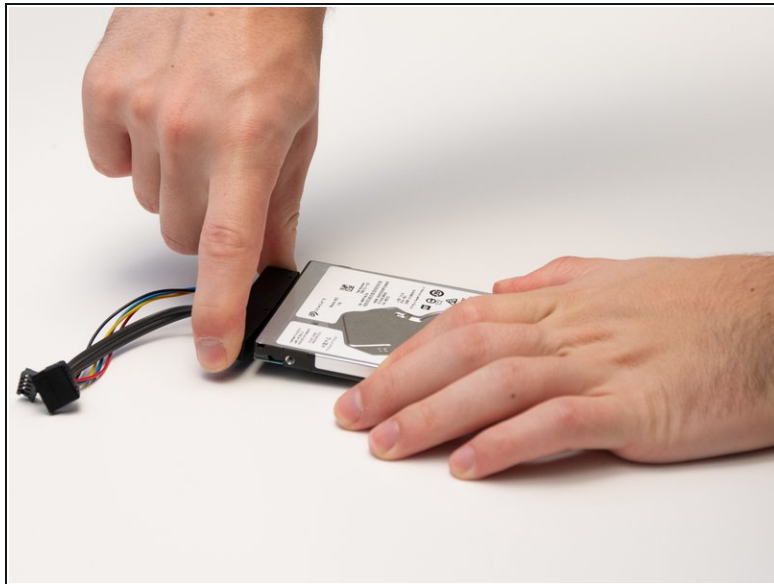
- Remove the four 10mm screws attaching the hard drive to the plastic casing with the Torx T8 Security screwdriver.

Step 10



- Carefully remove the hard drive from its plastic case.

Step 11



- Carefully remove the black wire connection from the hard drive by gently pulling away from the hard drive.

To reassemble your device, follow these instructions in reverse order.