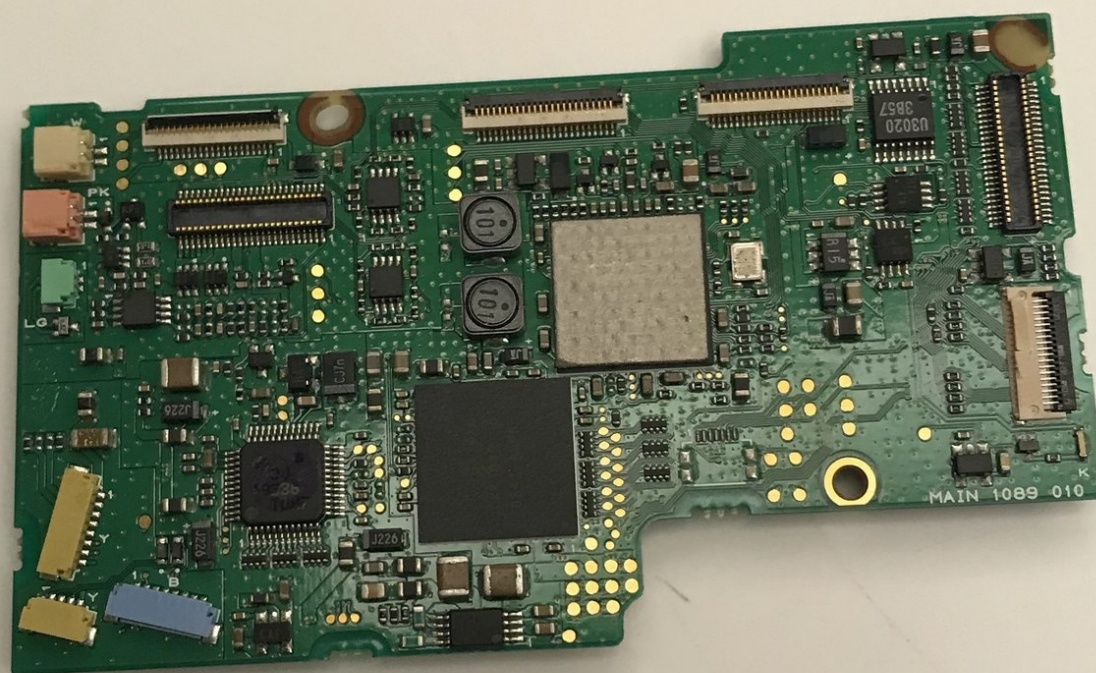




Canon Powershot Pro1 Motherboard Replacement

You can follow these instructions step-by-step to replace the motherboard on your Powershot Pro1 camera.

Written By: Seana Meegan



INTRODUCTION

The motherboard of the Canon Powershot Pro1 contains a large percentage of the camera's circuitry. Damage to the motherboard can result in a variety of issues. This guide can help you replace your damaged motherboard.

Use care when removing the ribbon cables and connectors, and ensure you place connectors into their designated position.



TOOLS:

- [Phillips #000 Screwdriver](#) (1)
 - [Tweezers](#) (1)
 - [iFixit Opening Tool](#) (1)
-

Step 1 — Battery



- Locate the battery compartment cover on the right hand side of the camera. The cover features the text: "CF/BATT.OPEN".

Step 2



- There is an arrow beside the text. Using your hands, slide the cover in the direction of this arrow.

Step 3



- Pull the cover toward you. After doing so you will see the battery sitting inside the compartment.

Step 4



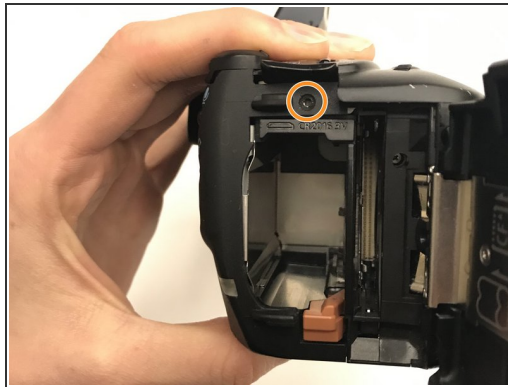
- Press the orange battery lock inside the compartment.
 - Remove the battery.
- i** This photo show the battery compartment after the battery has been removed.

Step 5 — Motherboard



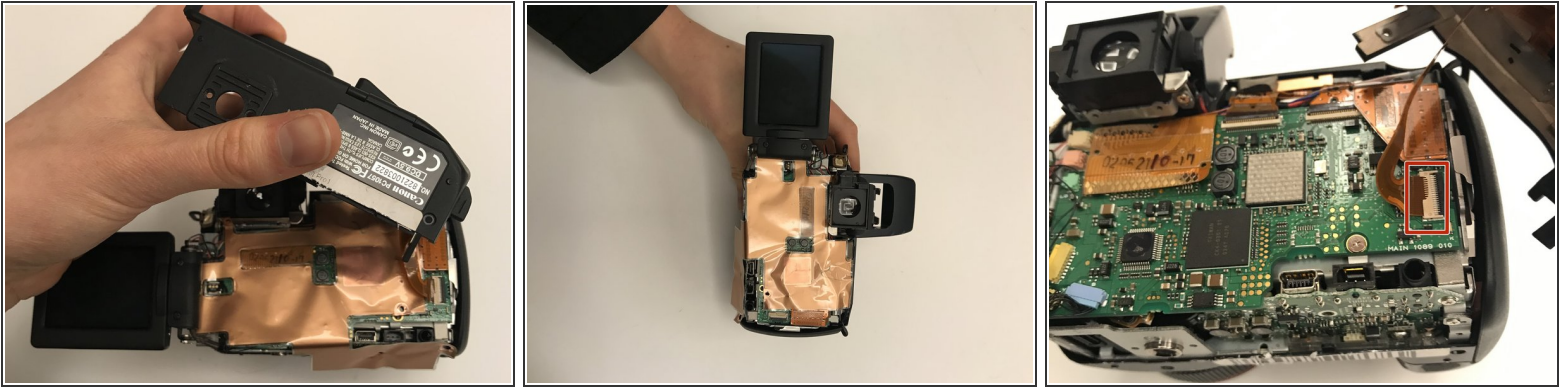
- Open the screen to access the underside of the camera.

Step 6



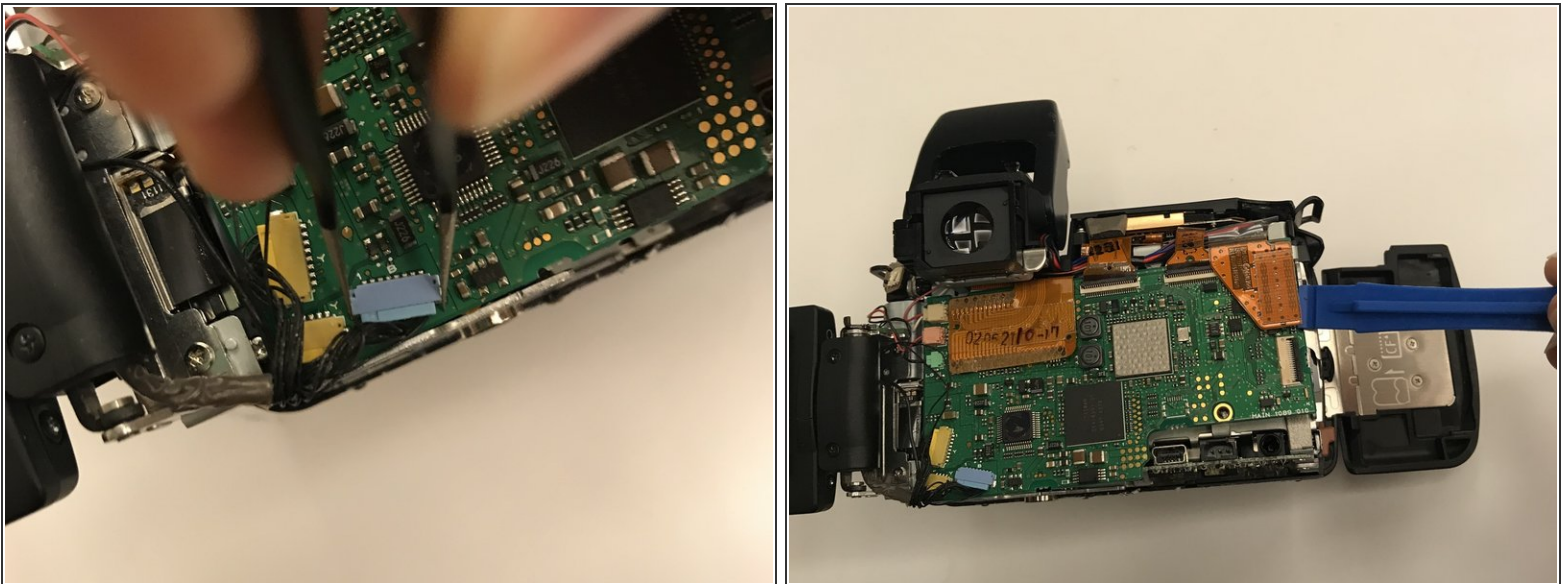
- Using the Phillips #000 screwdriver:
 - Remove two 1.00 mm screws under the viewfinder.
 - Remove one screw in the battery compartment.
 - Remove five screws on the bottom of the camera.
- Remove one screw on the left side of the camera (opposite the battery compartment).

Step 7



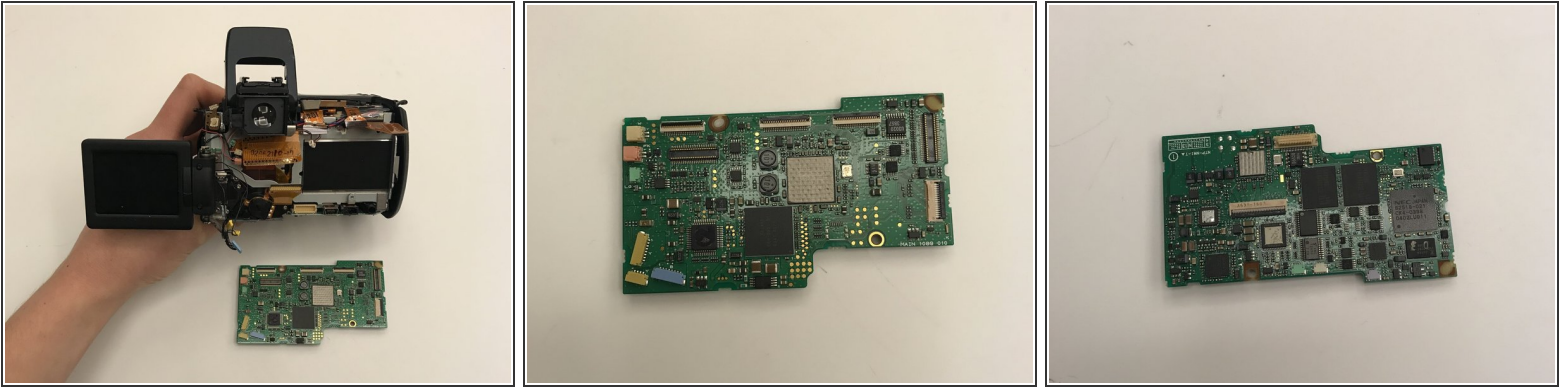
- Completely detach the cover from the motherboard.
- Lift the inside cover to reveal the motherboard.
- Detach the bottom right ribbon cable from the motherboard.

Step 8



- Lift up the gold insulation cover to reveal the motherboard.
- Use [tweezers](#) and an [iFixit opening tool](#), detach any wire connectors and ribbon cables from the motherboard.

Step 9



- Once detached from all connectors and ribbon cables, remove the motherboard.

To reassemble your device, follow these instructions in reverse order.