



# DJI Spark Camera Replacement

If you need to replace the camera of your DJI...

Written By: Amelia Hagberg



## INTRODUCTION

If you need to replace the camera of your DJI Spark (model CP.PT.000903) because it is no longer taking photos or recording as required, use this guide. The camera of the DJI Spark allows the user to take photos with a resolution of 3968×2976p and videos with a resolution of 1920×1080 at a rate of 30p. If the camera is no longer working, it may be unable to save any new videos or pictures taken, or may not be able to take photos or videos at all due to damaged cables.



### TOOLS:

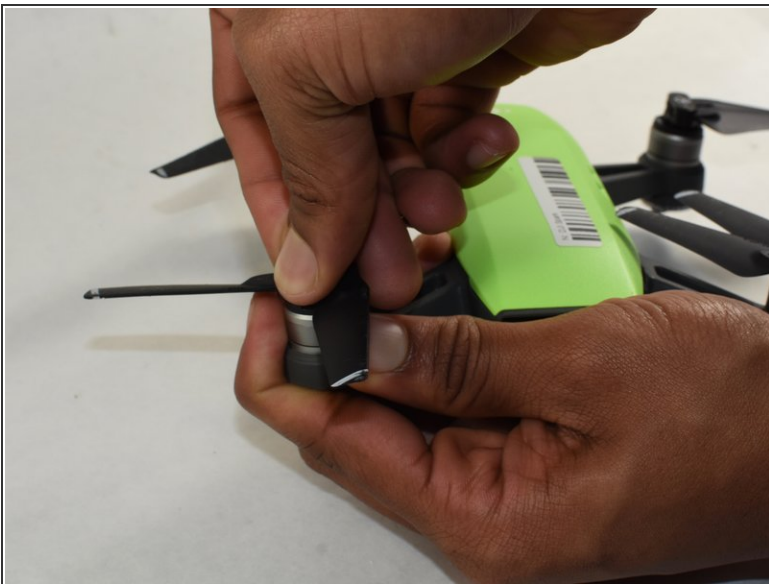
- [1.5mm Hex Screwdriver](#) (1)
  - [iFixit Opening Tool](#) (1)
  - [Phillips #000 Screwdriver](#) (1)
  - [Phillips #0 Screwdriver](#) (1)
-

## Step 1 — Propellers



- Push down on the propeller that is being replaced.

## Step 2



- Twist the propeller until it feels loose.
- Pull on it until it comes off.


## Step 3 — Battery



- Flip the drone over.
- Grip the left and right sides of the battery.
- Slide firmly forward until it pops out.

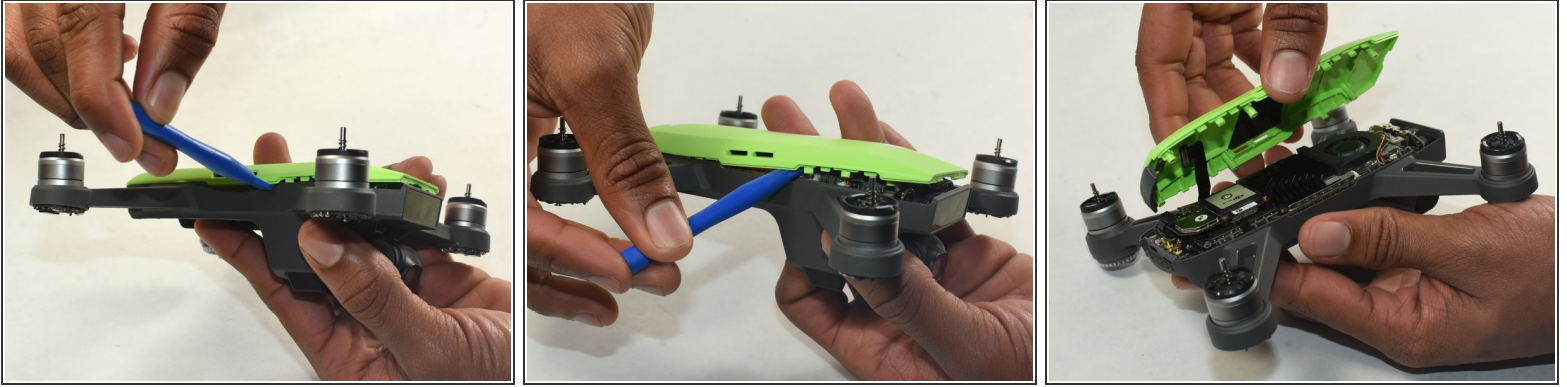
## Step 4 — Lid



- Flip the drone over.
  - Remove the four 1.5mm Hex screws.
  - Remove the two 1.5mm Hex screws near the camera head.
-  You may need to remove plastic nubs from the hex screws using a spudger first.



## Step 5



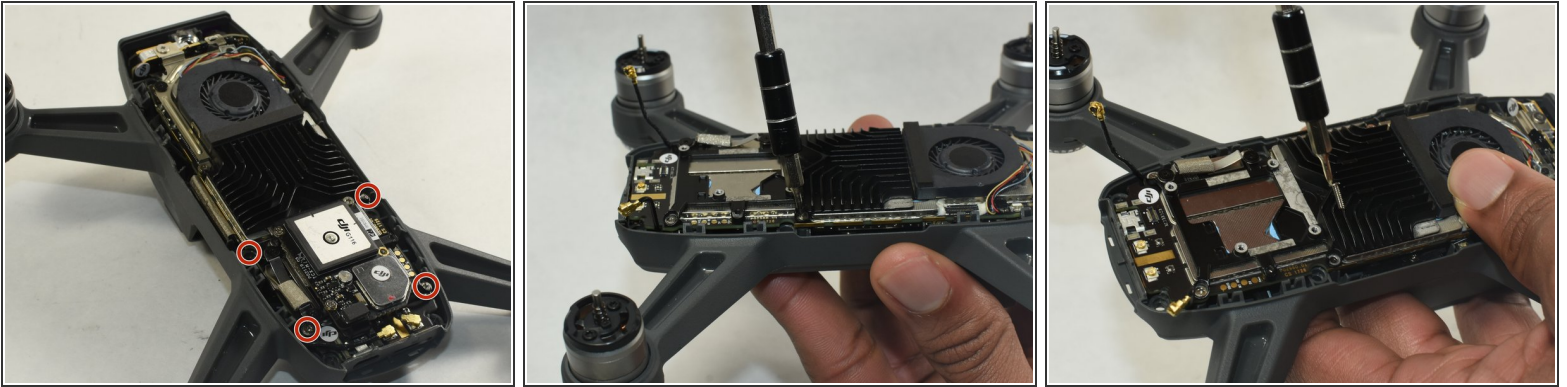
- Hold the drone so the lid is facing up.
- Insert the plastic opening tool into the side of the drone.
- Slide the tool around the perimeter until you can lift the top off.

## Step 6 — Camera



- Disconnect two gold antenna next to the internal GPS while removing the motherboard.

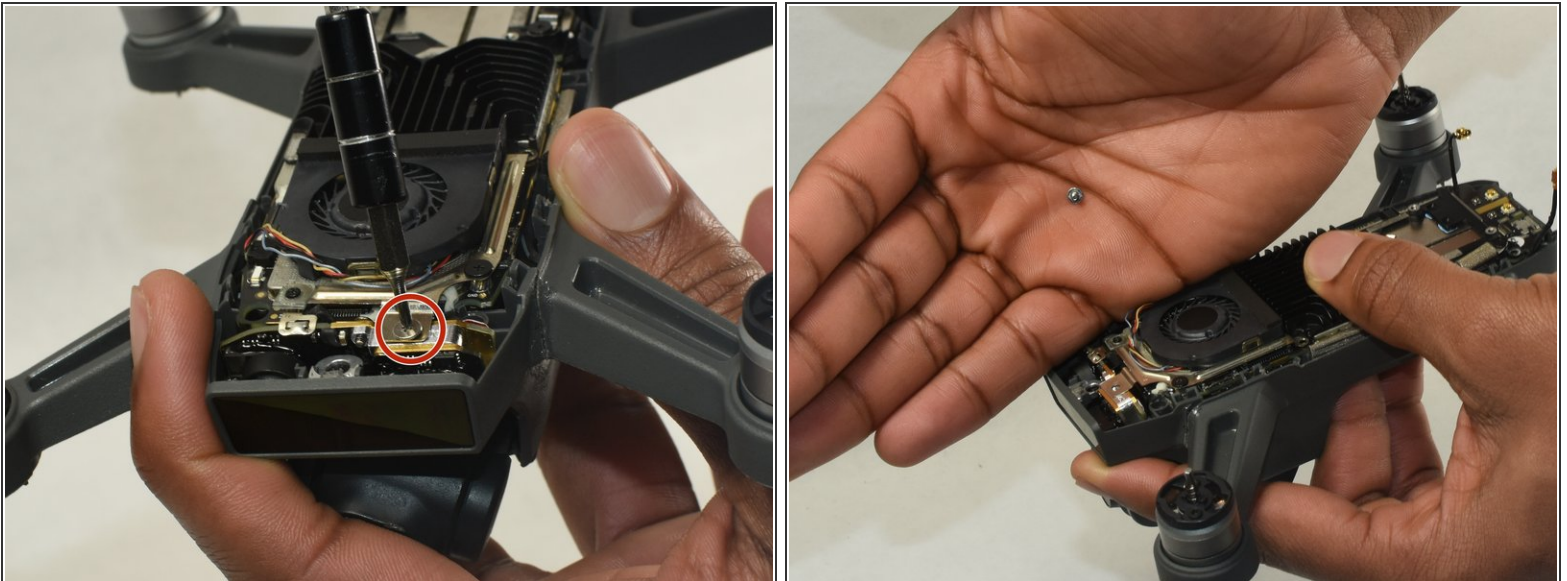
## Step 7



- Remove all the Phillips #0 screws attaching the motherboard to the drone.

ⓘ It is the piece with both the fan and GPS module on it.

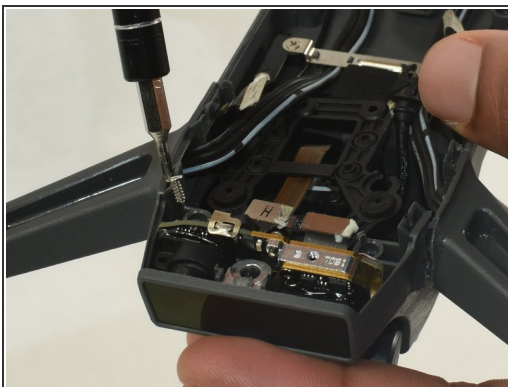
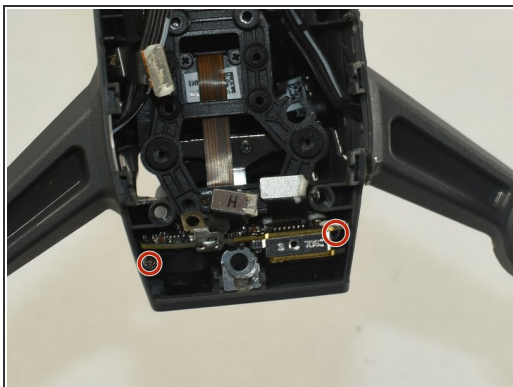
## Step 8



- Remove the 3.0 mm Phillips #000 screw.

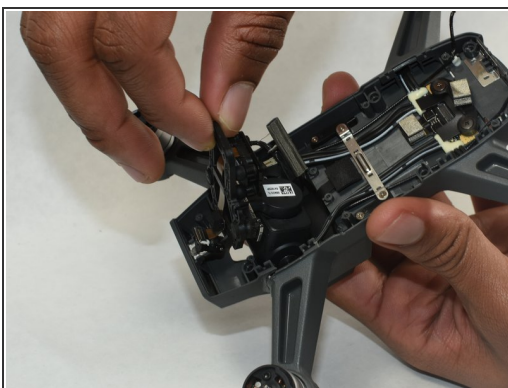


## Step 9



- Remove the two Phillips #0 screws on the right and left sides.
- Once removed, pull the front facing sensor out.

## Step 10



- Gently remove the gimbal along with the camera from the top of the device.

To reassemble your device, follow these instructions in reverse order.