



Samsung Galaxy Note10 Screen Replacement

Use this guide to remove or replace the screen...

Written By: Carsten Frauenheim



INTRODUCTION

Use this guide to remove or replace the screen on your Samsung Galaxy Note10.

Due to the Note10's design, you will have to remove the back panel in order to disconnect the screen cable.

Before you begin this procedure, be sure to have a set of replacement adhesives for both the back panel and the screen.

TOOLS:


[iOpener](#) (1)
[iFixit Opening Picks \(Set of 6\)](#) (1)
[Suction Handle](#) (1)
[Spudger](#) (1)
[Tweezers](#) (1)
[Phillips #00 Screwdriver](#) (1)

PARTS:

[Galaxy Note10 Screen](#) (1)
[Galaxy Note10 Screen Adhesive](#) (1)
[Galaxy Note10 Rear Cover Adhesive](#) (1)
[Tesa 61395 Double-Sided Tape](#) (1)

Step 1 — Heat the back panel



 **Completely power off your phone before you begin disassembly.**

- [Prepare an iOpener](#) and apply it to the left edge of the back panel for one minute.
 - ⓘ A hair dryer, heat gun, or hot plate may also be used, but be careful not to overheat the phone—the display and internal battery are both susceptible to heat damage.

Step 2 — Insert an opening pick



- Apply a suction cup to the heated edge of the back panel, as close to the edge as possible.
 - ① If your back glass is badly cracked, covering it with a layer of clear packing tape may allow the suction cup to adhere. Alternatively, very strong tape may be used instead of the suction cup. If all else fails, you can superglue the suction cup to the broken panel.
- Pull up on the suction cup with strong, steady force to create a gap between the back panel and the frame.
 - ① Depending on the age of your phone, this may be difficult. If you are having trouble, apply more heat to the edge and try again.
- Insert the point of an opening pick into the gap.

Step 3 — Begin to slice the adhesive



- Slide the opening pick along the left edge towards the bottom left corner to slice the adhesive.
⚠ Do not insert the opening pick more than halfway into the phone or you risk damaging internal components.
- Leave the pick inserted in the bottom left corner to prevent the adhesive from re-sealing.

Step 4 — Slice the left side adhesive



- Insert a second opening pick and slide it across the left side towards the top left corner to slice the adhesive.
- Leave the pick inserted in the top left corner to prevent the adhesive from re-sealing.

Step 5 — Slice the top side adhesive



- Prepare an iOpener and apply it to the top edge of the phone for one minute.

Step 6



- Insert a third opening pick into the gap on the top edge of the phone.
- Slide the opening pick to the top right corner, slicing the adhesive.
- Leave the pick inserted in the top right corner to prevent the adhesive from re-sealing.

Step 7 — Slice the right side adhesive



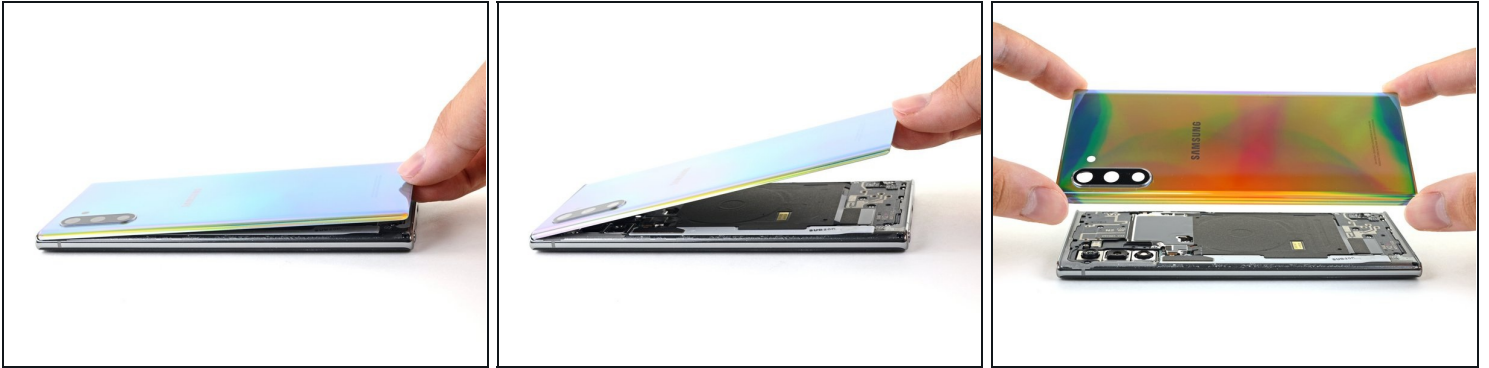
- Prepare an iOpener and apply it to the right edge of the phone for one minute.

Step 8



- Insert a fourth and final opening pick into the gap on the right side of the phone, sliding it down towards the bottom right corner of the phone to slice the adhesive.
- ① The back panel will begin to separate from the phone as you get closer to the bottom edge.
- Slide an opening pick back and forth around the entire perimeter of the phone to release any missed adhesive, reheating if you find any extra-stubborn adhesive.

Step 9 — Lift off the back panel



- Lift up and remove the back panel.

Step 10 — Lift up the metal cover



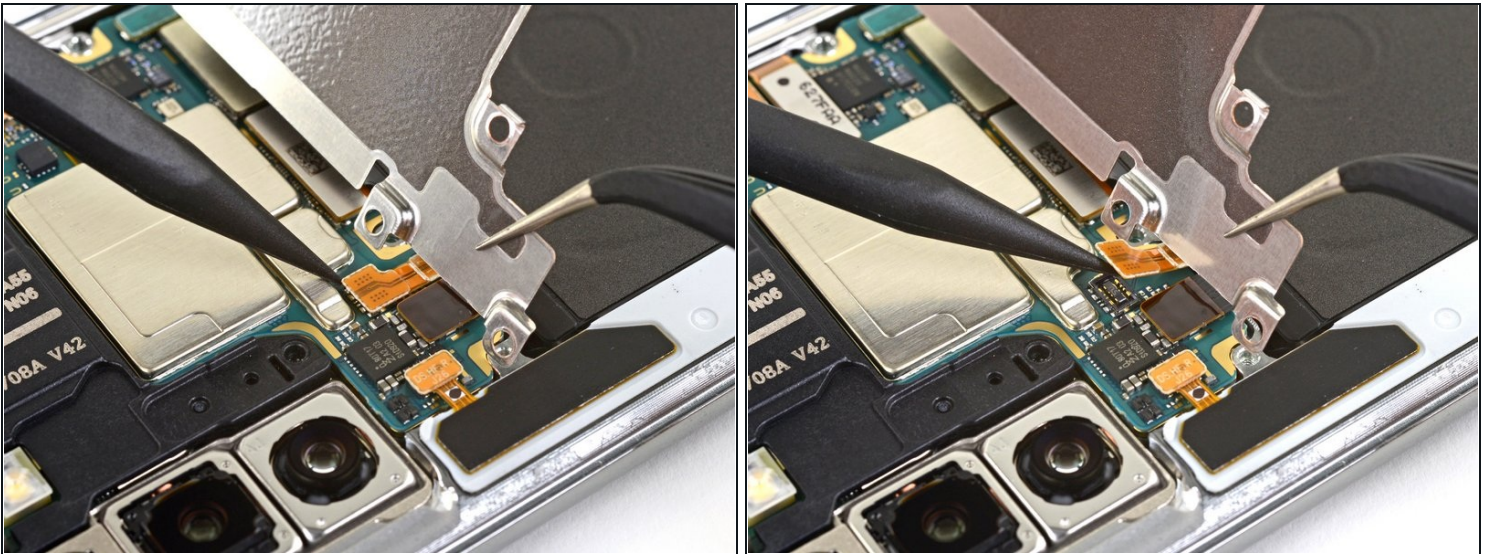
- Use a Phillips screwdriver to remove the five 4 mm screws securing the wireless charging coil.

Step 11



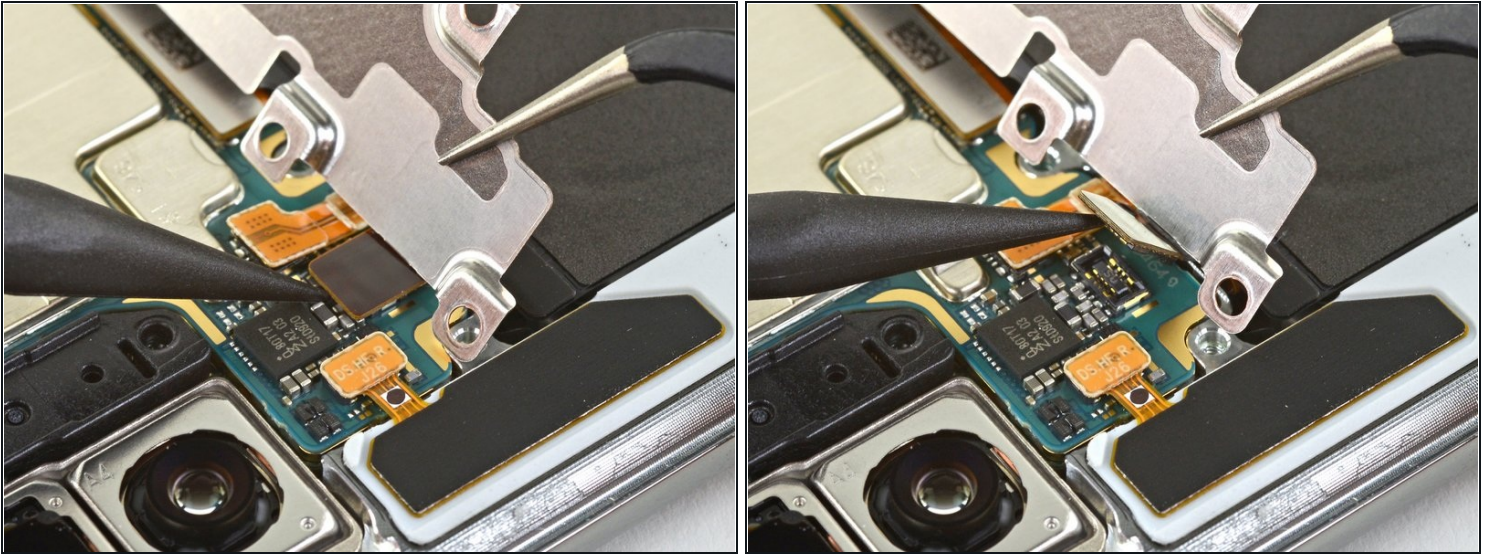
- Use a pair of [tweezers](#) to lift up and flip back the metal shield covering the battery connector.

Step 12 — Disconnect the battery



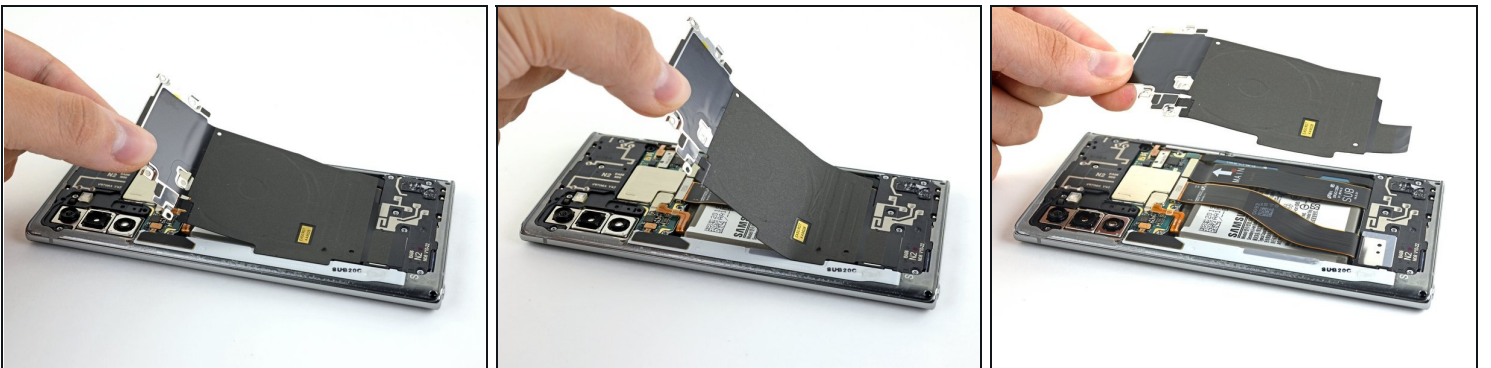
- While holding the metal shield up and out of the way, use the pointed end of a spudger to pry up the battery connector to disconnect it.

Step 13 — Disconnect the wireless charging coil



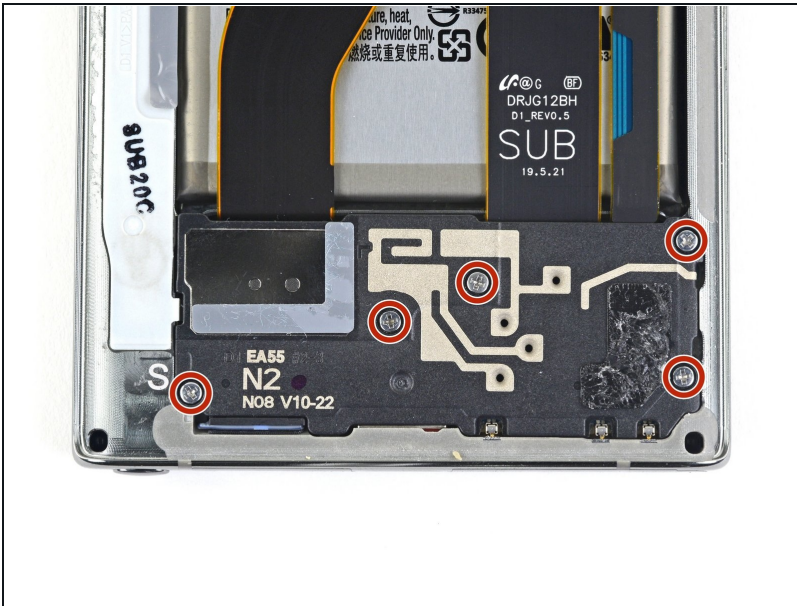
- Use the pointed end of a spudger to disconnect the wireless charging coil connector from the motherboard.

Step 14 — Remove the wireless charging coil



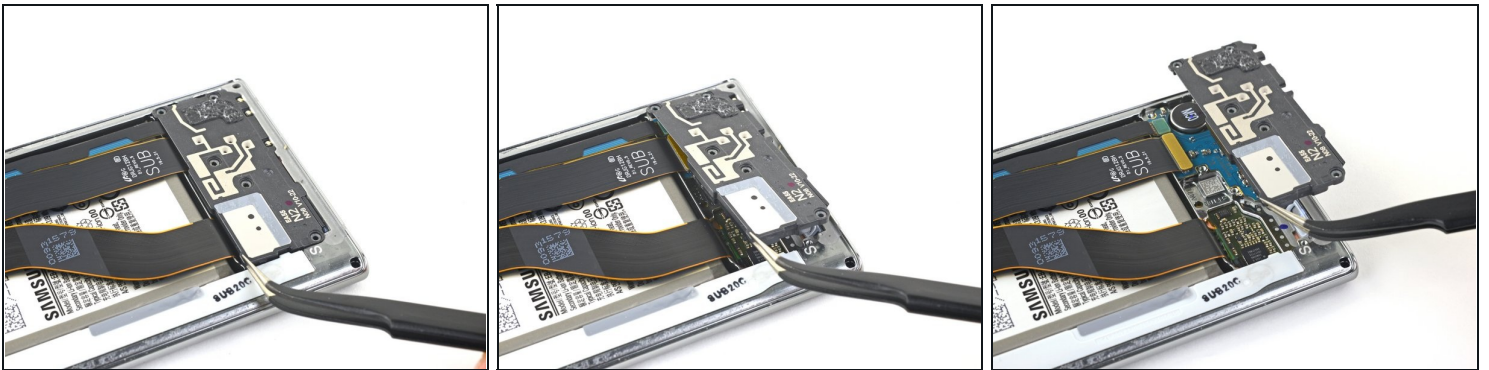
- Tilt the metal shielding up so you can grip it with your fingers.
- Peel the wireless charging coil up and away from the device.
 - ⓘ The wireless charging coil is secured to the phone with some light adhesive.
- Remove the wireless charging coil.

Step 15 — Remove the loudspeaker screws



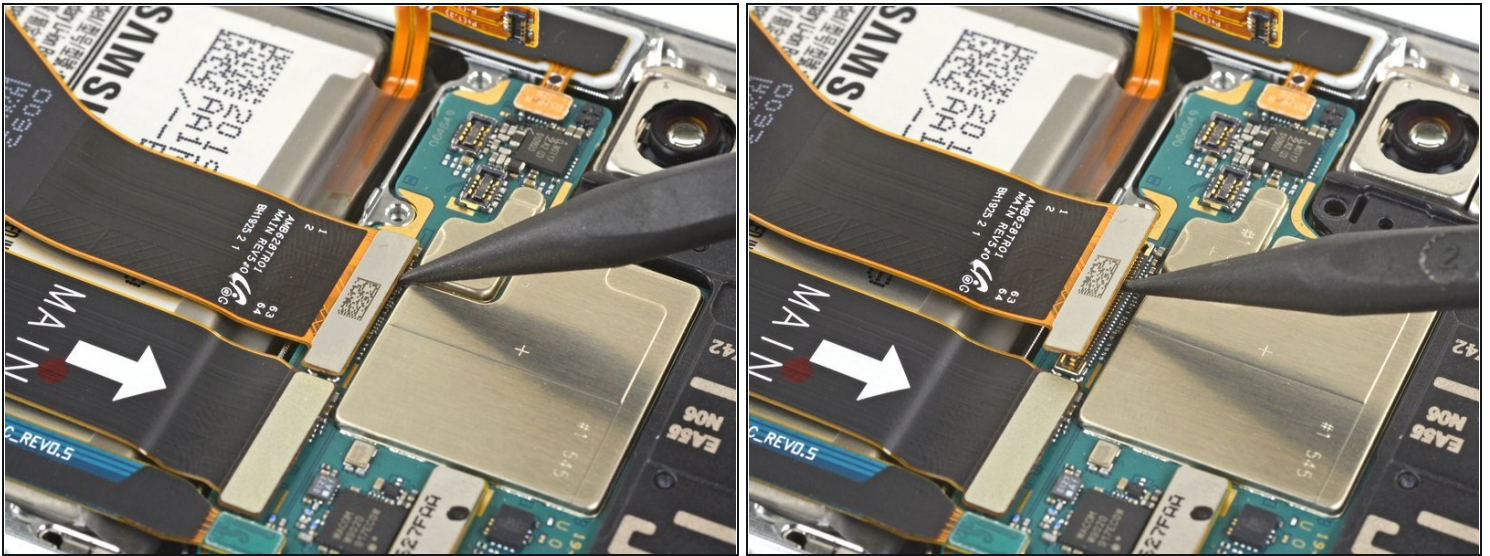
- Use a Phillips screwdriver to remove the five 4 mm screws securing the loudspeaker.

Step 16 — Remove the loudspeaker



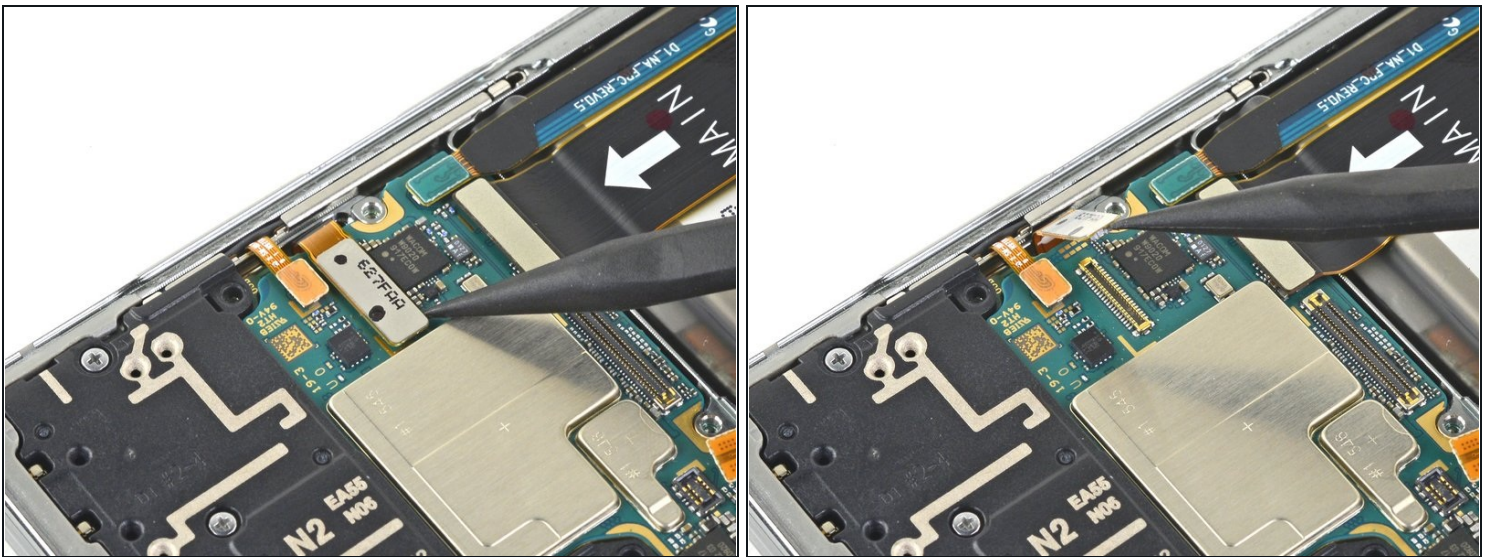
- Use a pair of [tweezers](#) to remove the loudspeaker.

Step 17 — Disconnect the display cable



- Use the pointed end of a spudger to disconnect the display cable from the motherboard.
- ☑ To re-attach [press connectors](#) like this one, carefully align and press down on one side until it clicks into place, then repeat on the other side. Do not press down on the middle. If the connector is misaligned, the pins can bend, causing permanent damage.

Step 18 — Disconnect the touch layer



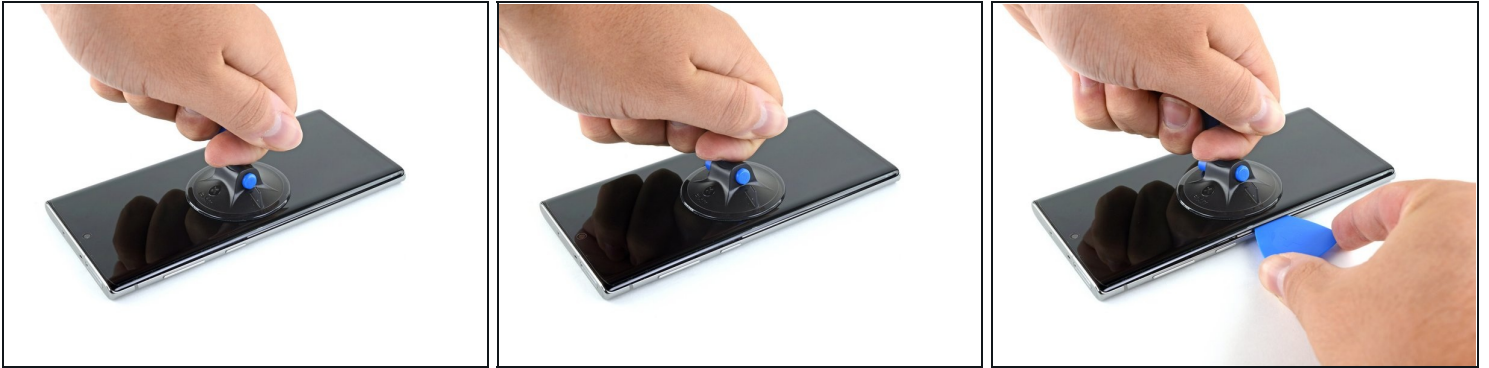
- Use the pointed end of a spudger to disconnect the S-Pen touch layer cable connector from the motherboard.

Step 19 — Loosen the adhesive



- [Prepare an iOpener](#) and apply it to the left edge of the display for one minute.
- ⓘ A hair dryer, heat gun, or hot plate may also be used, but be careful not to overheat the phone—the display and internal battery are both susceptible to heat damage.

Step 20 — Slice the left side adhesive



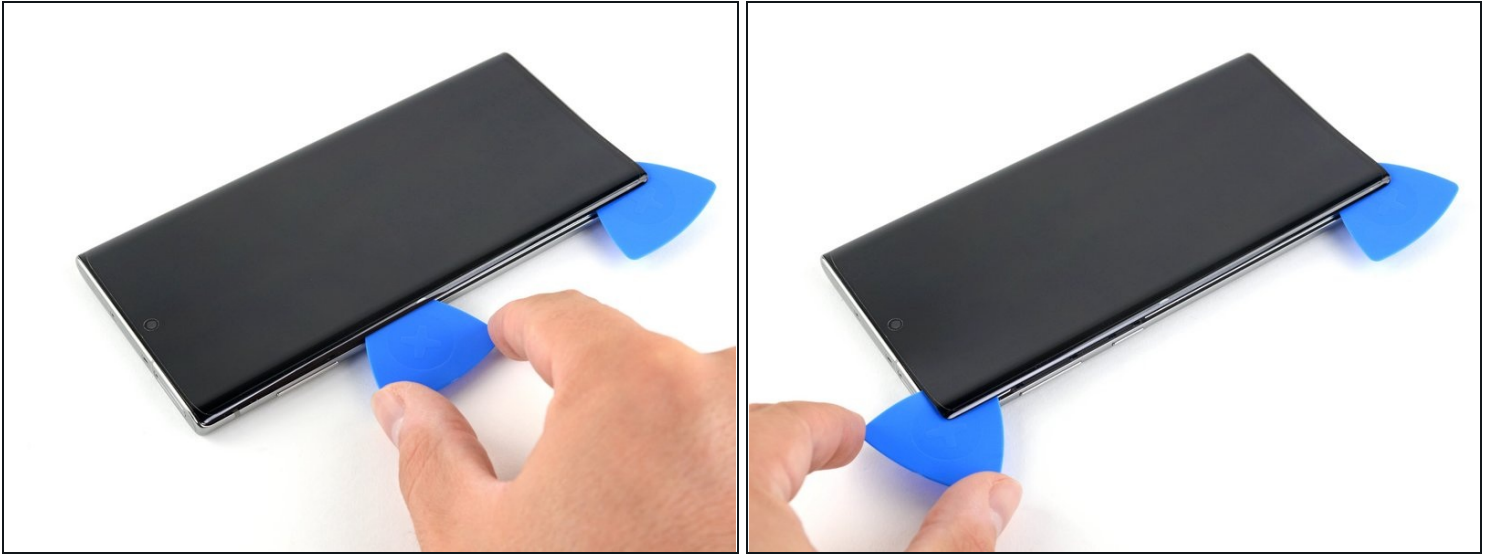
- Apply a suction cup to the heated edge of the display, as close to the edge as possible.
 - ① If your screen is badly cracked, covering it with a layer of clear packing tape may allow the suction cup to adhere. Alternatively, very strong tape may be used instead of the suction cup. If all else fails, you can superglue the suction cup to the broken display.
- Pull up on the suction cup with strong, steady force to create a gap between the display and the frame.
 - ① Depending on the age of your phone, this may be difficult. If you are having trouble, apply more heat to the edge and try again.
- Insert the point of an opening pick into the gap.

Step 21



- Slide the opening pick along the left side towards the bottom left corner to slice the adhesive.
⚠ Do not insert the opening pick more than halfway into the phone or you risk damaging internal components.
- Leave the pick inserted in the bottom left corner to prevent the adhesive from re-sealing.

Step 22



- Insert a second opening pick and slide it along the left side towards the top left corner to slice the adhesive.
- Leave the pick inserted in the top left corner to prevent the adhesive from re-sealing.

Step 23 — Slice the bottom side adhesive



- Prepare an iOpener and apply it to the bottom edge of the phone for one minute.

Step 24



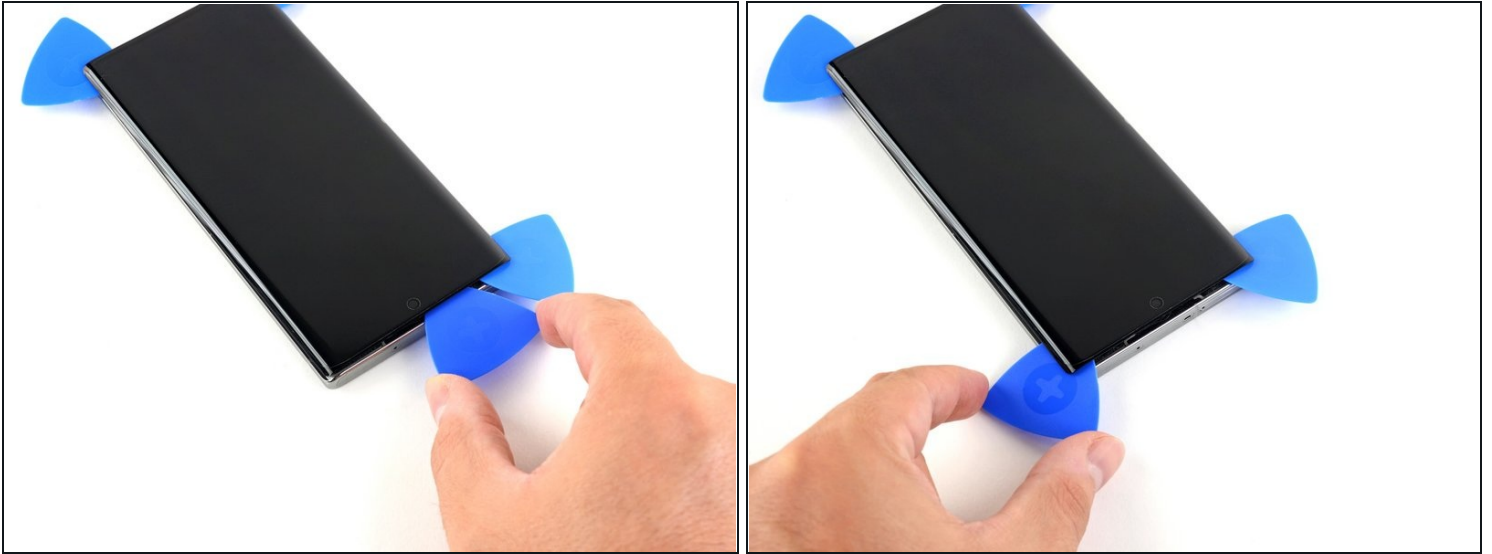
- Insert a third opening pick into the gap on the bottom edge of the phone.
- Slide the opening pick to the bottom right corner, slicing the adhesive.
- Leave the pick inserted in the bottom right corner to prevent the adhesive from re-sealing.

Step 25 — Slice the top side adhesive



- Prepare an iOpener and apply it to the top edge of the phone for one minute.

Step 26



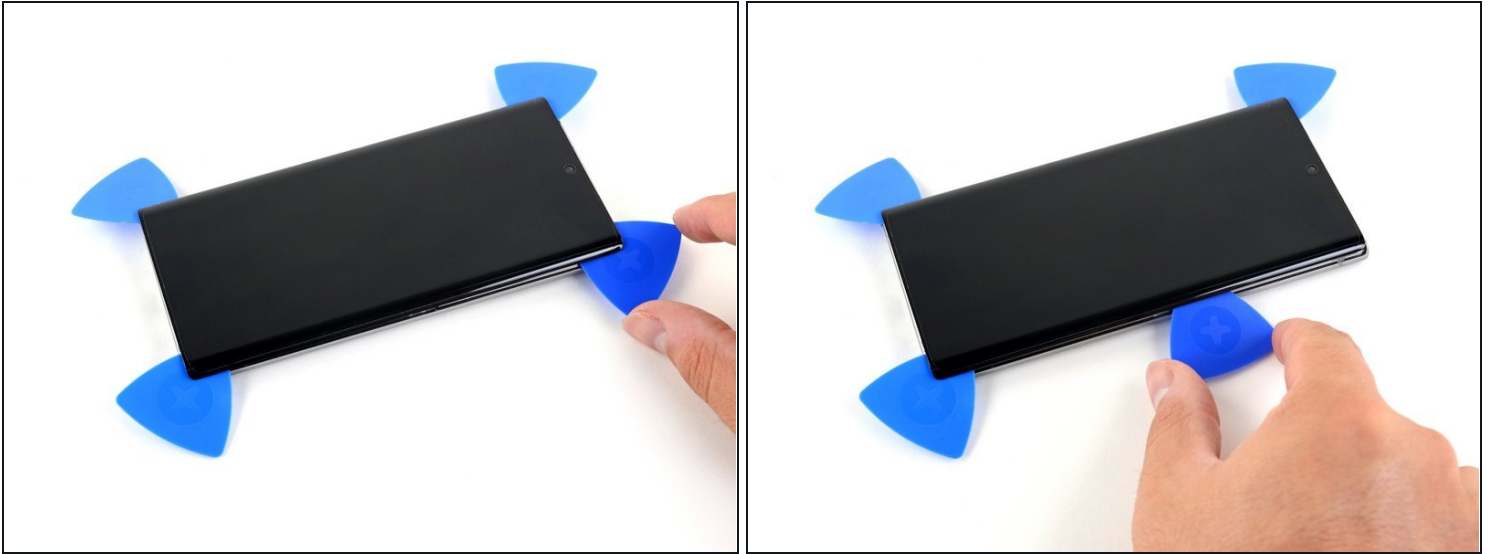
- Insert a fourth opening pick into the gap on the top edge of the phone.
- Slide the opening pick to the top right corner, slicing the adhesive.
- Leave the pick inserted in the top right corner to prevent the adhesive from re-sealing.

Step 27 — Slice the right side adhesive



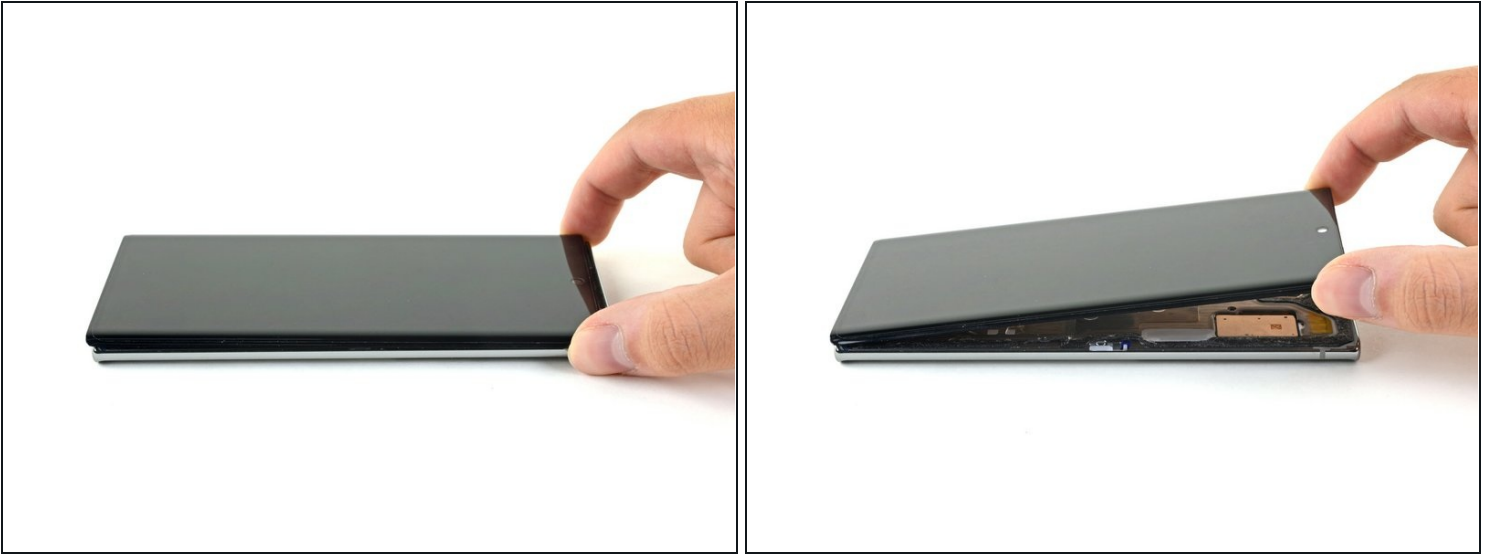
- Prepare an iOpener and apply it to the right edge of the phone for one minute.

Step 28



- Slide the opening pick from the top right corner down towards the bottom right corner of the phone to slice the adhesive.
- ⓘ The display will begin to separate from the phone as you get closer to the bottom edge.
- Slide an opening pick back and forth around the entire perimeter of the phone to release any missed adhesive, reheating if you find any extra-stubborn adhesive.

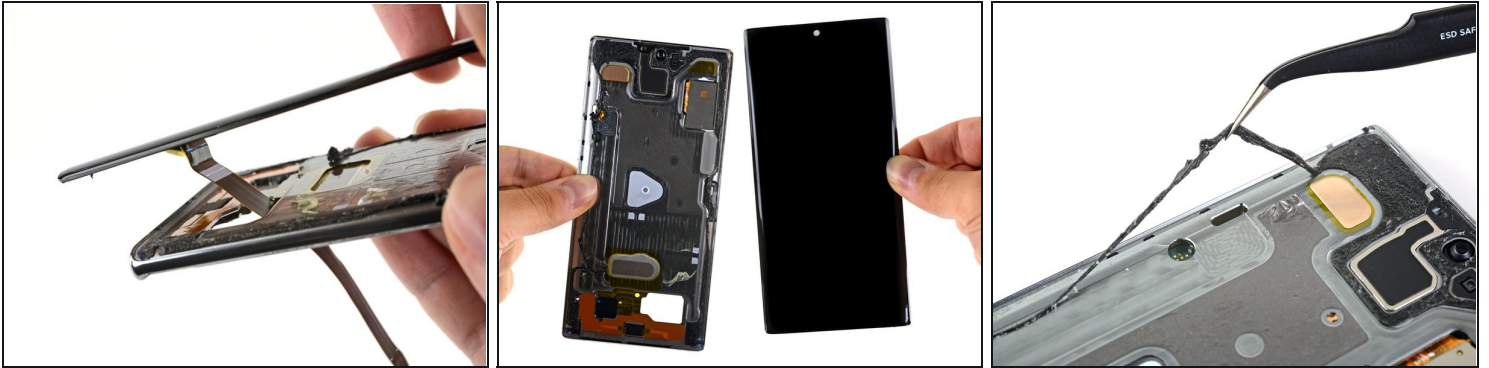
Step 29 — Remove the screen



⚠ Don't try to completely remove the screen yet, as there are still some cables routed through the phone's frame.

- Lift the screen up from the edge with the front-facing camera.
- ① Don't lift the screen higher than about a 15° angle above the device.

Step 30



- Thread the display and S-Pen touch layer cables through their cutouts on the phone frame.
 - Remove the display.
 - Remove any leftover adhesive before installing a new display.
 - ☑ [Follow this guide](#) for instructions on how to apply adhesive to the replacement screen.
 - Be sure to test your repairs before installing new adhesives.
-

Compare your new replacement part to the original part—you may need to transfer remaining components or remove adhesive backings from the new part before installing.

To reassemble your device, follow the above steps in reverse order.

Take your e-waste to an [R2 or e-Stewards certified recycler](#).

Repair didn't go as planned? Try some [basic troubleshooting](#), or ask our [Answers community](#) for help.