



Canon GP-E2 GPS Receiver Hot Shoe Teardown

Teardown Canon GPS receiver hot shoe

Written By: Arsen



Step 1 — Canon GP-E2 GPS Receiver Hot Shoe Teardown



- Take out receiver

Step 2



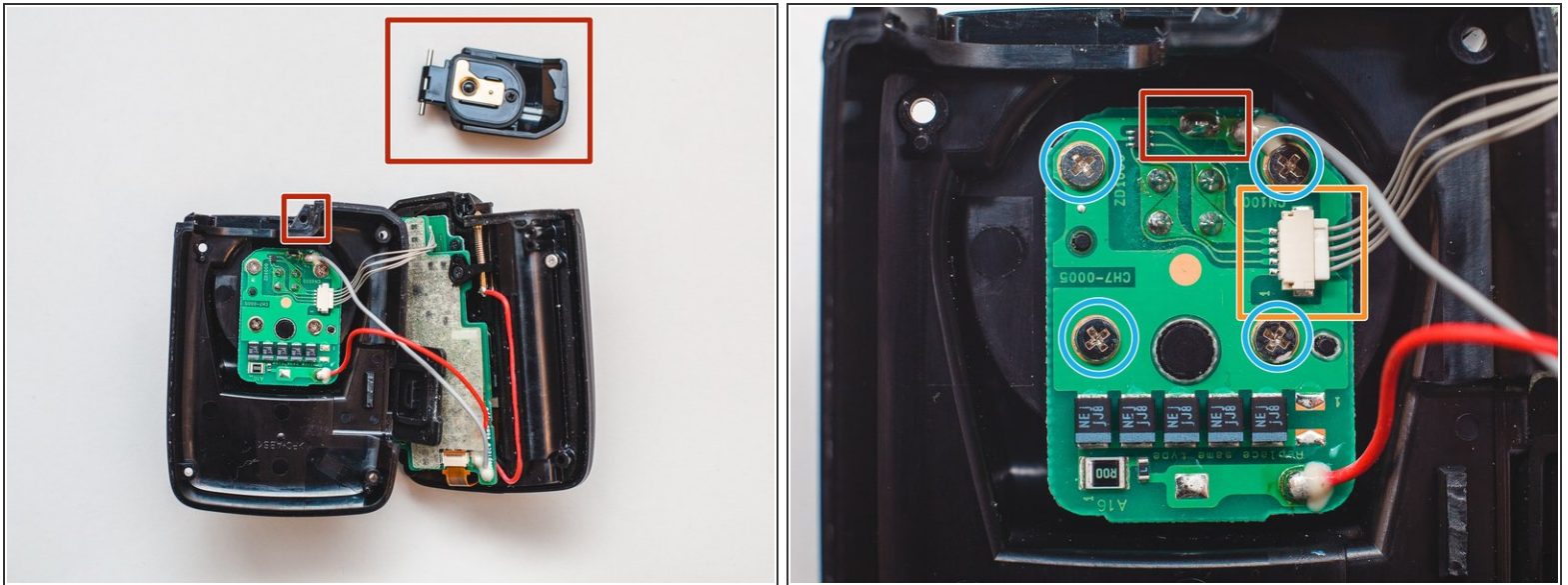
- Open battery cover and remove AA battery

Step 3



- Remove four screws from bottom part
- Keep in mind: left lower screw have different long.

Step 4



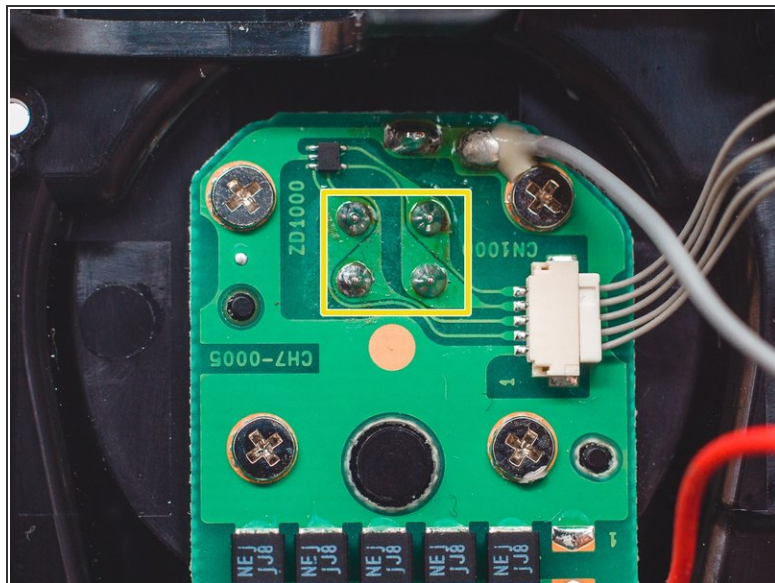
- Separate top and bottom.
- Remove battery cover from hole
- Disconnect connector
- Screw up four screws.
- Desolder Red ground Pin. Hot shoe now can be removed

Step 5



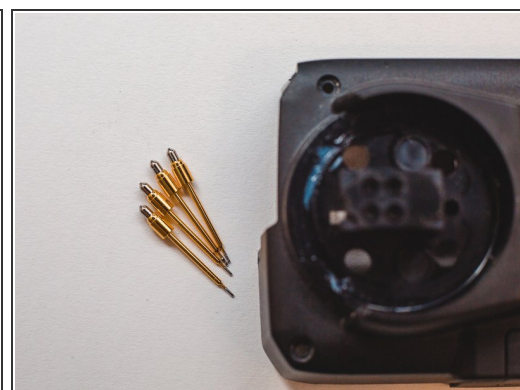
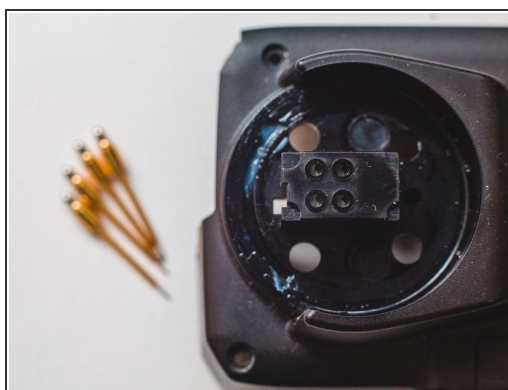
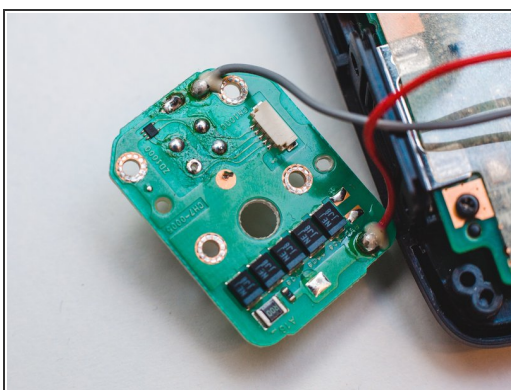
- Remove Lock pin with spring. Don't miss them.
- Remove four screws from bottom. Remove Shoe and remove metal shield.
- Remove screws with springs
- Now you disassemble hot shoe.

Step 6



- Next remove pins.
- Desolid four pins
- Remove PCB.

Step 7



- Remove PCB
- Remove pins from case