



Toshiba Satellite M55-S135 Hard Drive Replacement

Remove the hard drive in your Toshiba Satellite.

Written By: Matthew Trinh



INTRODUCTION

This guide will provide a walk-through on how to remove the hard drive from your Toshiba Satellite. Before replacing your hard drive, make sure [you back up your files first](#) if you want to have your old files on your new hard drive.



TOOLS:

- [Phillips #00 Screwdriver](#) (1)
-

Step 1 — Hard Drive



- Use the Phillips 00 screwdriver to remove the 3.62mm screw.

Step 2



- Remove the plastic cover from the laptop.

Step 3



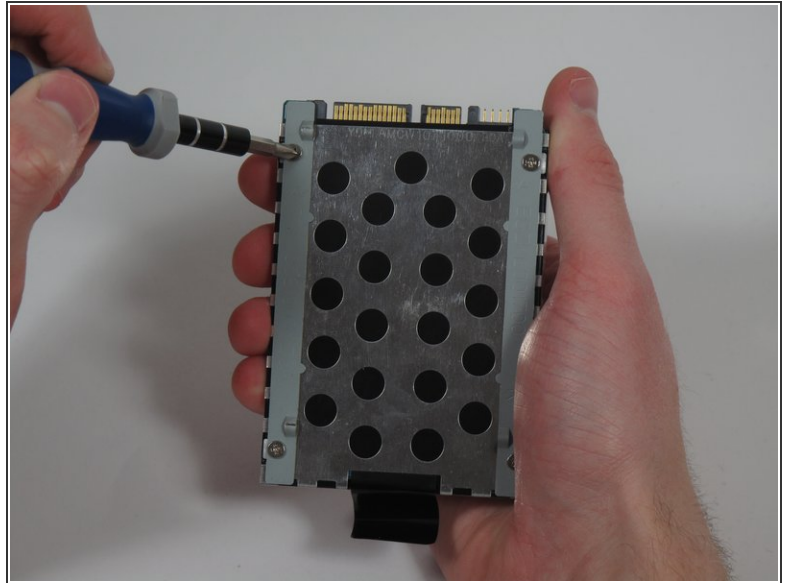
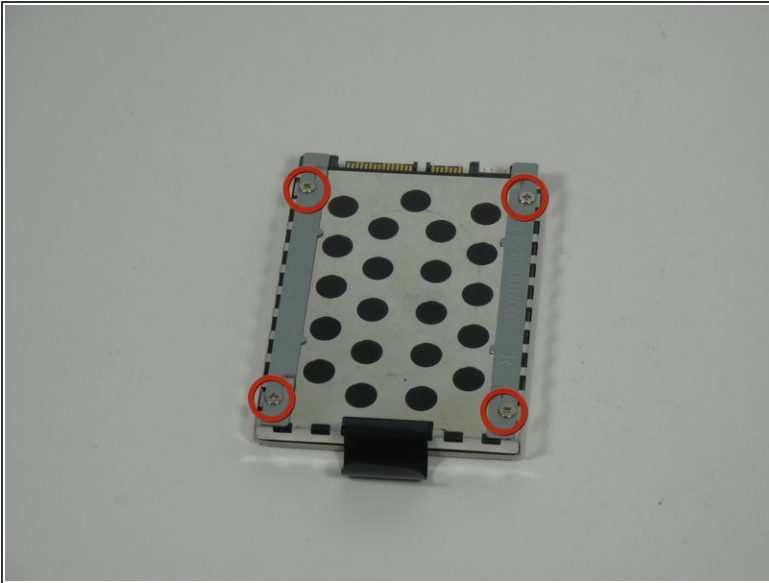
- Pull the black plastic tab horizontally away from the hard drive to disconnect and remove the hard drive from the laptop.

Step 4



- Use the Phillips 00 screwdriver to remove the four 6.50mm screws on the sides of hard drive.

Step 5



- Use the Phillips 00 screwdriver to remove the other four 6.50mm screws on hard drive.
- Remove the washer strips (the metal strips that the screws held down) from the hard drive.

Step 6



- Pull the black tab away from the hard drive to separate the hard drive and the casing.

To reassemble your device, follow these instructions in reverse order.